

CATALOG 1300

ACCESSORY

9.12.11

**CAPACITORS • CAPACITOR ACCESSORIES • CAPACITOR TESTER
MUNICIPAL 200 • PULLEYS • BELTS • PHASE CONVERTERS
SPEED CONTROLS • CONTACTORS • ALARMS • SWITCHES
MOTOR BASES • MOTOR MOUNTING BRACKETS
MOTOR ACCESSORIES • RUBBER MOUNTING RINGS
RAIN SHIELDS • WATER SLINGER**



**CALL OUR
CUSTOMER SERVICE DEPARTMENT
OR VISIT WWW.PEMSMOTORS.COM
FOR PRICING**

- 04** | **capacitors**
- 09** | **capacitor accessories**
- 10** | **capacitor tester & municap 200**
- 11** | **pulleys**
- 21** | **belts**
- 24** | **phase converters**
- 29** | **speed controls**
- 30** | **contactors**
- 33** | **alarms & switches**
- 34** | **motor bases**
- 36** | **motor mounting brackets**
- 38** | **motor accessories**
- 44** | **rubber mounting rings**
- 45** | **rain shields & water slinger**
- 46** | **model index**



INDEX

START CAPACITORS | 125 VOLTS



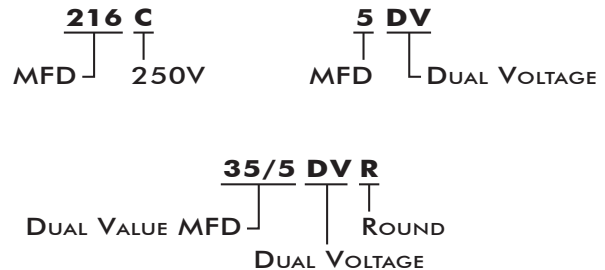
STOCK NUMBER	DESCRIPTION	CASE SIZE
25B ⁺	25-30 MFD	1
43B	43-53 MFD	1
53B	53-64 MFD	1
64B	64-77 MFD	1
72B	72-88 MFD	1
88B	88-108 MFD	1
108B	108-130 MFD	1
124B	124-145 MFD	1
130B	130-156 MFD	1
145B	145-175 MFD	1
161B	161-193 MFD	1
189B	189-227 MFD	1
200B	200-240 MFD	1
216B	216-259 MFD	1
233B	233-280 MFD	1
243B	243-292 MFD	1
270B	270-324 MFD	1
300B	300-360 MFD	1
324B	324-388 MFD	1
324B-4	324-388 MFD	4
340B	340-408 MFD	4
378B	378-440 MFD	4
400B-2	400-480 MFD	2
400B	400-480 MFD	4
430B-2	430-516 MFD	2
430B	430-516 MFD	4
460B	460-552 MFD	4
540B	540-648 MFD	4
540B-5	540-648 MFD	5
590B	590-708 MFD	4
708B	708-849 MFD	6
708B-7	708-849 MFD	7
829B-5	829-994 MFD	5
829B	829-994 MFD	7
1000B	1000-1200 MFD	7
1175B	1175-1410 MFD	7
1280B	1280-1536 MFD	7

NOTE

+ Item to be discontinued when present stock is depleted.

STOCK NUMBER DESCRIPTION

SUFFIX	DESCRIPTION
B	125V
F	165V
C	250V
D	330V
DV	370/440V OVAL
DVR	370/440V ROUND



START CAPACITORS | 165 VOLTS

STOCK NUMBER	DESCRIPTION	CASE SIZE
72F	72-88 MFD	1
88F	88-108 MFD	1
108F ⁺	108-130 MFD	2
124F ⁺	124-149 MFD	2
130F ⁺	130-156 MFD	2
145F	145-175 MFD	2
161F	161-193 MFD	4
189F	189-227 MFD	4
216F	216-259 MFD	4
233F	233-280 MFD	4
243F	243-292 MFD	4
270F	270-324 MFD	4
340F	340-408 MFD	5
378F	378-440 MFD	5
400F	400-480 MFD	5
540F	540-648 MFD	7
710F	710-852 MFD	7
810F	810-972 MFD	7
1000F	1000-1200 MFD	7

NOTE

⁺ Item to be discontinued when present stock is depleted.



START CAPACITORS | 250 VOLTS

STOCK NUMBER	DESCRIPTION	CASE SIZE
21C	21-25 MFD	1
25C	25-30 MFD	1
30C	30-36 MFD	1
36C	36-43 MFD	2
43C	43-53 MFD	2
47C	47-56 MFD	2
53C-1	56-64 MFD	1
53C	53-64 MFD	2
64C-1	64-77 MFD	1
64C	64-77 MFD	4
72C	72-88 MFD	4
88C	88-108 MFD	4
108C	108-130 MFD	4
124C	124-149 MFD	4
130C	130-156 MFD	4
145C	145-172 MFD	6
161C	161-193 MFD	4
161C-5	161-193 MFD	5
161C-6 ⁺	161-193 MFD	6
189C	189-227 MFD	7
216C	216-259 MFD	7
233C	233-280 MFD	7
243C	243-292 MFD	7
270C	270-324 MFD	7
320C	320-384 MFD	8
400C	400-480 MFD	8

NOTE

⁺ Item to be discontinued when present stock is depleted.



START CAPACITORS | 330 VOLTS



STOCK NUMBER	DESCRIPTION	CASE SIZE
21D	21-25 MFD	2
25D	25-30 MFD	2
30D	30-36 MFD	4
36D	36-45 MFD	4
43D	43-53 MFD	4
53D	53-64 MFD	4
64D	64-77 MFD	4
72D	72-88 MFD	5
88D	88-108 MFD	6
108D	108-130 MFD	7
124D	124-145 MFD	7
130D	130-156 MFD	7
135D	135-162 MFD	8
145D	145-175 MFD	8
161D	161-193 MFD	8
189D	189-227 MFD	8
216D	216-259 MFD	8
270D	270-324 MFD	8

START CAPACITORS | RECESSED



STOCK NUMBER	DESCRIPTION	CASE SIZE
K250B+	R 250 MFD 125V	7
K59C+	R 59 MFD 250V	7
K105C+	R 105 MFD 250V	7

NOTE

+ item to be discontinued when present stock is depleted.

CASE DIMENSIONS

CASE SIZE	DIAMETER	HEIGHT
1	1 7/16"	2 3/4"
2	1 7/16"	3 3/8"
3	1 7/16"	4 3/8"
4	1 13/16"	3 3/8"
5	1 13/16"	4 3/8"
6	2 1/16"	3 3/8"
7	2 1/16"	4 3/8"
8	2 9/16"	4 3/8"

RUN CAPACITORS | DUAL VOLTAGE OVAL 370/440 VOLTS



STOCK NUMBER	DESCRIPTION	BASE	HEIGHT
2DV	2 MFD	2.00" x 1.25"	1.58"
3DV	3 MFD	2.00" x 1.25"	1.58"
4DV	4 MFD	2.00" x 1.25"	2.33"
5DV	5 MFD	2.00" x 1.25"	2.33"
6DV	6 MFD	2.00" x 1.25"	2.33"
7.5DV	7.5 MFD	2.00" x 1.25"	2.33"
10DV	10 MFD	2.00" x 1.25"	3.15"
12.5DV	12.5 MFD	2.00" x 1.25"	3.15"
15DV	15 MFD	2.00" x 1.25"	3.15"
17.5DV	17.5 MFD	2.75" x 1.75"	3.15"
20DV	20 MFD	2.75" x 1.75"	3.15"
25DV	25 MFD	2.75" x 1.75"	3.15"
30DV	30 MFD	2.75" x 1.75"	3.55"
35DV	35 MFD	2.75" x 1.75"	3.55"
40DV	40 MFD	2.75" x 1.75"	3.55"
45DV	45 MFD	2.75" x 1.75"	4.33"
50DV	50 MFD	2.75" x 1.75"	4.33"
55DV	55 MFD	2.75" x 1.75"	4.33"
60DV	60 MFD	2.75" x 1.75"	5.12"

RUN CAPACITORS | DUAL VOLTAGE ROUND 370/440 VOLTS



STOCK NUMBER	DESCRIPTION	BASE	HEIGHT
5DVR	5 MFD	1.65"	2.33"
6DVR	6 MFD	1.65"	2.33"
7.5DVR	7.5 MFD	1.65"	2.75"
10DVR	10 MFD	1.65"	2.75"
12.5DVR	12.5 MFD	1.65"	2.75"
15DVR	15 MFD	1.65"	3.15"
17.5DVR	17.5 MFD	1.65"	3.15"
20DVR	20 MFD	1.78"	3.15"
25DVR	25 MFD	1.78"	3.54"
30DVR	30 MFD	2.00"	3.94"
35DVR	35 MFD	2.00"	3.94"
40DVR	40 MFD	2.00"	4.33"
45DVR	45 MFD	2.00"	4.33"
50DVR	50 MFD	2.00"	4.33"
55DVR	55 MFD	2.18"	5.12"
60DVR	60 MFD	2.18"	5.12"
70DVR	70 MFD	2.33"	4.75"
80DVR	80 MFD	2.33"	5.12"
100DVR	100 MFD	2.33"	5.88"
110DVR	110 MFD	2.33"	5.88"

RUN CAPACITORS | DUAL VOLTAGE/DUAL VALUE OVAL 370/440 VOLTS



STOCK NUMBER	DESCRIPTION	BASE	HEIGHT
15/3DV	15/3 MFD	2.80" x 1.77"	2.56"
15/5DV	15/5 MFD	2.80" x 1.77"	2.56"
15/10DV	15/10 MFD	2.80" x 1.77"	2.56"
20/5DV	20/5 MFD	2.80" x 1.77"	3.15"
20/15DV	20/15 MFD	2.80" x 1.77"	3.55"
25/5DV	25/5 MFD	2.80" x 1.77"	3.15"
25/10DV	25/10 MFD	2.80" x 1.77"	3.75"
30/5DV	30/5 MFD	2.80" x 1.77"	3.94"
35/5DV	35/5 MFD	2.80" x 1.77"	3.94"
40/5DV	40/5 MFD	2.80" x 1.77"	4.33"
45/5DV	45/5 MFD	2.80" x 1.77"	4.33"

RUN CAPACITORS | DUAL VOLTAGE/DUAL VALUE ROUND 370/440 VOLTS



STOCK NUMBER	DESCRIPTION	BASE	HEIGHT
15/5DVR	15/5 MFD	1.78"	3.15"
15/10DVR	15/10 MFD	1.97"	3.54"
20/5DVR	20/5 MFD	1.97"	3.54"
20/15DVR	20/15 MFD	1.97"	4.16"
25/3DVR	25/3 MFD	1.97"	3.54"
25/4DVR	25/4 MFD	1.97"	3.54"
25/5DVR	25/5 MFD	1.97"	3.54"
25/7.5DVR	25/7.5 MFD	1.97"	4.16"
25/10DVR	25/10 MFD	1.97"	4.16"
30/4DVR	30/4 MFD	1.97"	4.16"
30/5DVR	30/5 MFD	1.97"	4.16"
35/4DVR	35/4 MFD	1.97"	4.33"
35/5DVR	35/5 MFD	2.17"	4.33"
35/7.5DVR	35/7.5 MFD	2.17"	4.33"
35/10DVR	35/10 MFD	2.17"	4.33"
40/5DVR	40/5 MFD	2.36"	4.72"
40/7.5DVR	40/7.5 MFD	2.36"	4.72"
40/10DVR	40/10 MFD	2.36"	4.72"
45/4DVR	45/4 MFD	2.36"	4.72"
45/5DVR	45/5 MFD	2.36"	4.72"
45/7.5DVR	45/7.5 MFD	2.36"	4.72"
50/5DVR	50/5 MFD	2.36"	5.12"
50/7.5DVR	50/7.5 MFD	2.36"	5.12"
50/10DVR	50/10 MFD	2.36"	5.12"
55/5DVR	55/5 MFD	2.36"	5.12"
55/7.5DVR	55/7.5 MFD	2.36"	5.12"
55/10DVR	55/10 MFD	2.36"	5.12"
60/5DVR	60/5 MFD	2.36"	5.12"
60/7.5DVR	60/7.5 MFD	2.36"	5.12"
60/10DVR	60/10 MFD	2.36"	5.12"
80/5DVR	80/5 MFD	2.36"	5.90"

START CAPACITORS | ACCESSORIES



STOCK NUMBER	DESCRIPTION	CASE SIZE
AAP1	END CAPS, BOTTOM HOLE	1, 2, 3
AAP2	END CAPS, BOTTOM HOLE	4, 5
AAP3	END CAPS, BOTTOM HOLE	6, 7
ABP1	END CAPS, TOP HOLE	1, 2, 3
ABP2	END CAPS, TOP HOLE	4, 5
ABP3	END CAPS, TOP HOLE	6, 7
BP1	BRACKETS	3, 5, 7, 8
BP2	BRACKETS	2, 4, 6
BP3	BRACKETS	1

RUN CAPACITORS | ACCESSORIES



STOCK NUMBER	DESCRIPTION	WIDTH
81-0002-A	OVAL STRAP MOUNTING BRACKET	2"
81-0002-B	OVAL STRAP MOUNTING BRACKET	2 1/2"
81-0002-C+	OVAL STRAP MOUNTING BRACKET	3 1/2"
PEM2921	ROUND STRAP MOUNTING BRACKET	1 3/4" DIA.

NOTE

+ Item to be discontinued when present stock is depleted.

CAPACITOR MOUNTING KIT

Stock No. 8725-6001

RUBBER BOOT AND BRACKET.

Stock No. 0012-0079

RUBBER BOOT.



DIGITAL CAPACITOR TESTER | 9V BATTERY INCLUDED



LENGTH	WIDTH	HEIGHT	STOCK NUMBER
5 1/4"	2 7/8"	1 3/4"	CAP1500P

GOOD TO KNOW...

FUSE PROTECTED...

1 7/8" x 1/2" LCD DISPLAY...

LOW BATTERY INDICATOR...

± 0.5% ACCURACY...

NEW IMPROVED DESIGN
OIL FILLED FOR LONGER LIFE!



MOTOR MATE | UNIVERSAL MOTOR RUN CAPACITOR

VOLTS	DIAMETER	HEIGHT	STOCK NUMBER
370/440	2.5"	4.5"	MUNICAP200

FEATURES

REPLACES OVER 200 SINGLE AND DUAL VALUE CAPACITORS

2.5 MFD TO 67.5 MFD

INCLUDES JUMPER LEADS

PROTECTION INCLUDES SAFETY INTERRUPTER AND THERMAL FUSING

UL FILE #E306036

US PATENT NUMBERS 7987593 & 8159810

-40°C TO 70°C TEMPERATURE RANGE

GOOD TO KNOW...

PROTECTED TO 10,000 AFC...



SINGLE GROOVE FIXED BORE 'A' SECTION | CAST IRON

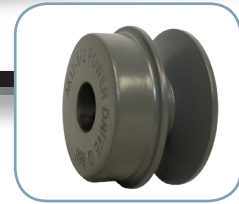
OUTSIDE DIAMETER	BORE SIZE	POWER DRIVE NUMBER	MASKA NUMBER
1.55"	1/2"	---	MA15-1/2
1.55"	5/8"	---	MA15-5/8
1.75"	1/2"	AK17-1/2	MA18-1/2
1.75"	5/8"	AK17-5/8	MA18-5/8
2.0"	1/2"	AK20-1/2	MA20-1/2
<hr/>			
2.0"	5/8"	AK20-5/8	MA20-5/8
2.0"	7/8"	---	MA20-7/8
2.2"	1/2"	AK22-1/2	MA22-1/2
2.2"	5/8"	AK22-5/8	MA22-5/8
2.2"	7/8"	---	MA22-7/8
<hr/>			
2.3"	1/2"	AK23-1/2	MA23-1/2
2.3"	5/8"	AK23-5/8	MA23-5/8
2.3"	7/8"	---	MA23-7/8
2.5"	1/2"	AK25-1/2	MA25-1/2
2.5"	5/8"	AK25-5/8	MA25-5/8
<hr/>			
2.5"	7/8"	---	MA25-7/8
2.7"	1/2"	AK27-1/2	MA27-1/2
2.7"	5/8"	AK27-5/8	MA27-5/8
2.7"	7/8"	---	MA27-7/8
2.8"	1/2"	AK28-1/2	MA28-1/2
<hr/>			
2.8"	5/8"	AK28-5/8	MA28-5/8
2.8"	7/8"	---	MA28-7/8
3.05"	1/2"	AK30-1/2	MA30-1/2
3.05"	5/8"	AK30-5/8	MA30-5/8
3.05"	7/8"	AK30-7/8	MA30-7/8
<hr/>			
3.25"	1/2"	AK32-1/2	MA33-1/2
3.25"	5/8"	AK32-5/8	MA33-5/8
3.25"	7/8"	AK32-7/8	MA33-7/8
3.45"	1/2"	AK34-1/2	MA35-1/2
3.45"	5/8"	AK34-5/8	MA35-5/8
<hr/>			
3.45"	7/8"	AK34-7/8	MA35-7/8
3.75"	1/2"	AK39-1/2	MA38-1/2
3.75"	5/8"	AK39-5/8	MA38-5/8
3.75"	7/8"	AK39-7/8	MA38-7/8
3.95"	1/2"	AK41-1/2	MA40-1/2
<hr/>			
3.95"	5/8"	AK41-5/8	MA40-5/8
3.95"	7/8"	AK41-7/8	MA40-7/8
4.25"	1/2"	AK44-1/2	MA43-1/2
4.25"	5/8"	AK44-5/8	MA43-5/8
4.25"	7/8"	AK44-7/8	MA43-7/8
<hr/>			
4.45"	1/2"	AK46-1/2	MA45-1/2
4.45"	5/8"	AK46-5/8	MA45-5/8
4.45"	7/8"	AK46-7/8	MA45-7/8
4.75"	1/2"	AK49-1/2	MA48-1/2
4.75"	5/8"	AK49-5/8	MA48-5/8
<hr/>			
4.75"	7/8"	AK49-7/8	MA48-7/8
4.95"	1/2"	AK51-1/2	MA50-1/2
4.95"	5/8"	AK51-5/8	MA50-5/8
4.95"	7/8"	AK51-7/8	MA50-7/8
5.25"	1/2"	AK54-1/2	MA53-1/2

NOTE

Use with 3L & A(4L) V-belts. Additional sizes available upon request.

CONTINUE TO NEXT PAGE ►

SINGLE GROOVE FIXED BORE 'A' SECTION | CAST IRON

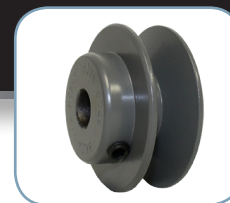


OUTSIDE DIAMETER	BORE SIZE	POWER DRIVE NUMBER	MASKA NUMBER
5.25"	5/8"	AK54-5/8	MA53-5/8
5.25"	7/8"	AK54-7/8	MA53-7/8
5.45"	1/2"	AK56-1/2	MA55-1/2
5.45"	5/8"	AK56-5/8	MA55-5/8
5.45"	7/8"	AK56-7/8	MA55-7/8
5.75"	1/2"	AK59-1/2	MA58-1/2
5.75"	5/8"	AK59-5/8	MA58-5/8
5.75"	7/8"	AK59-7/8	MA58-7/8
5.95"	1/2"	AK61-1/2	MA60-1/2
5.95"	5/8"	AK61-5/8	MA60-5/8
5.95"	7/8"	AK61-7/8	MA60-7/8
6.45"	1/2"	---	MA65-1/2
6.45"	5/8"	AK66-5/8	MA65-5/8
6.45"	7/8"	---	MA65-7/8
6.95"	1/2"	---	MA70-1/2
6.95"	5/8"	AK71-5/8	MA70-5/8
6.95"	7/8"	---	MA70-7/8
7.25"	1/2"	AK74-1/2	MA73-1/2
7.25"	5/8"	AK74-5/8	MA73-5/8
7.25"	7/8"	---	MA73-7/8
8.0"	1/2"	---	MA80-1/2
8.0"	5/8"	---	MA80-5/8
8.0"	7/8"	---	MA80-7/8

NOTE

Use with A(4L) & B(5L) V-belts.
Additional sizes available upon request.





SINGLE GROOVE FIXED BORE 'B' SECTION | CAST IRON

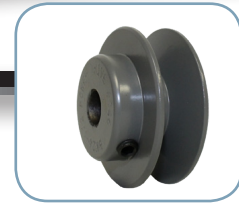
OUTSIDE DIAMETER	BORE SIZE	POWER DRIVE NUMBER	MASKA NUMBER
2.0"	1/2"	---	MB20-1/2
2.0"	5/8"	---	MB20-5/8
2.25"	1/2"	---	MB23-1/2
2.25"	5/8"	---	MB23-5/8
2.25"	7/8"	---	MB23-7/8
2.4"	1/2"	BK24-1/2	MB24-1/2
2.4"	5/8"	BK24-5/8	MB24-5/8
2.4"	7/8"	BK24-7/8	MB24-7/8
2.5"	1/2"	BK25-1/2	MB25-1/2
2.5"	5/8"	BK25-5/8	MB25-5/8
2.5"	7/8"	BK25-7/8	MB25-7/8
2.6"	1/2"	BK26-1/2	MB26-1/2
2.6"	5/8"	BK26-5/8	MB26-5/8
2.6"	7/8"	BK26-7/8	MB26-7/8
2.7"	1/2"	BK27-1/2	MB28-1/2
2.7"	5/8"	BK27-5/8	MB28-5/8
2.7"	7/8"	BK27-7/8	MB28-7/8
2.95"	1/2"	BK28-1/2	MB30-1/2
2.95"	5/8"	BK28-5/8	MB30-5/8
2.95"	7/8"	BK28-7/8	MB30-7/8
3.15"	1/2"	BK30-1/2	MB31-1/2
3.15"	5/8"	BK30-5/8	MB31-5/8
3.15"	7/8"	BK30-7/8	MB31-7/8
3.25"	1/2"	---	MB33-1/2
3.25"	5/8"	---	MB33-5/8
3.25"	7/8"	---	MB33-7/8
3.35"	1/2"	BK32-1/2	MB34-1/2
3.35"	5/8"	BK32-5/8	MB34-5/8
3.35"	7/8"	BK32-7/8	MB34-7/8
3.55"	1/2"	BK34-1/2	MB35-1/2
3.55"	5/8"	BK34-5/8	MB35-5/8
3.55"	7/8"	BK34-7/8	MB35-7/8
3.75"	1/2"	BK36-1/2	MB38-1/2
3.75"	5/8"	BK36-5/8	MB38-5/8
3.75"	7/8"	BK36-7/8	MB38-7/8
3.95"	1/2"	BK40-1/2	MB40-1/2
3.95"	5/8"	BK40-5/8	MB40-5/8
3.95"	7/8"	BK40-7/8	MB40-7/8
4.25"	1/2"	BK45-1/2	MB43-1/2
4.25"	5/8"	BK45-5/8	MB43-5/8
4.25"	7/8"	BK45-7/8	MB43-7/8
4.25"	1 1/8"	BK45-1-1/8	MB43-1-1/8
4.45"	1/2"	BK47-1/2	MB45-1/2
4.45"	5/8"	BK47-5/8	MB45-5/8
4.45"	7/8"	BK47-7/8	MB45-7/8
4.45"	1 1/8"	BK47-1-1/8	MB45-1-1/8
4.75"	1/2"	BK50-1/2	MB48-1/2
4.75"	5/8"	BK50-5/8	MB48-5/8
4.75"	7/8"	BK50-7/8	MB48-7/8
4.75"	1 1/8"	BK50-1-1/8	MB48-1-1/8

NOTE

Use with A(4L) & B(5L) V-belts. Additional sizes available upon request.

CONTINUE TO NEXT PAGE ►

SINGLE GROOVE FIXED BORE 'B' SECTION | CAST IRON



OUTSIDE DIAMETER	BORE SIZE	POWER DRIVE NUMBER	MASKA NUMBER
4.95"	1/2"	BK52-1/2	MB50-1/2
4.95"	5/8"	BK52-5/8	MB50-5/8
4.95"	7/8"	BK52-7/8	MB50-7/8
4.95"	1 1/8"	BK52-1-1/8	MB50-1-1/8
5.25"	1/2"	BK55-1/2	MB53-1/2
<hr/>			
5.25"	5/8"	BK55-5/8	MB53-5/8
5.25"	7/8"	BK55-7/8	MB53-7/8
5.25"	1 1/8"	BK55-1-1/8	MB53-1-1/8
5.45"	1/2"	---	MB55-1/2
5.45"	5/8"	BK57-5/8	MB55-5/8
<hr/>			
5.45"	7/8"	BK57-7/8	MB55-7/8
5.45"	1 1/8"	BK57-1-1/8	MB55-1-1/8
5.75"	1/2"	BK60-1/2	MB58-1/2
5.75"	5/8"	BK60-5/8	MB58-5/8
5.75"	7/8"	BK60-7/8	MB58-7/8
<hr/>			
5.75"	1 1/8"	BK60-1-1/8	MB58-1-1/8
5.95"	1/2"	BK62-1/2	MB60-1/2
5.95"	5/8"	BK62-5/8	MB60-5/8
5.95"	7/8"	BK62-7/8	MB60-7/8
5.95"	1 1/8"	BK62-1-1/8	MB60-1-1/8
<hr/>			
6.25"	1/2"	---	MB63-1/2
6.25"	5/8"	BK65-5/8	MB63-5/8
6.25"	7/8"	---	MB63-7/8
6.25"	1 1/8"	BK65-1-1/8	MB63-1-1/8
6.45"	5/8"	BK67-5/8	MB65-5/8
<hr/>			
6.45"	7/8"	BK67-7/8	MB65-7/8
6.45"	1 1/8"	BK67-1-1/8	MB65-1-1/8
6.75"	5/8"	BK70-5/8	MB68-5/8
6.75"	7/8"	BK70-7/8	MB68-7/8
6.75"	1 1/8"	BK70-1-1/8	MB68-1-1/8
<hr/>			
6.95"	1/2"	---	MB70-1/2
6.95"	5/8"	---	MB70-5/8
6.95"	7/8"	---	MB70-7/8
6.95"	1 1/8"	BK72-1-1/8	MB70-1-1/8
7.25"	1/2"	---	MB73-1/2
<hr/>			
7.25"	7/8"	---	MB73-7/8
7.25"	1 1/8"	BK75-1-1/8	MB73-1-1/8
7.75"	1/2"	---	MB78-1/2
7.75"	5/8"	BK80-5/8	MB78-5/8
7.75"	7/8"	BK80-7/8	MB78-7/8
<hr/>			
7.75"	1 1/8"	BK80-1-1/8	MB78-1-1/8
8.0"	1/2"	---	MB80-1/2
8.0"	5/8"	---	MB80-5/8
8.0"	7/8"	---	MB80-7/8
8.0"	1 1/8"	---	MB80-1-1/8

NOTE

Use with A(4L) & B(5L) V-belts.
Additional sizes available upon request.



VARIABLE PITCH SINGLE GROOVE HVAC | CAST IRON

OUTSIDE DIAMETER	BORE SIZE	POWER DRIVE NUMBER	MASKA NUMBER
2.5"	1/2"	1VL25-1/2PD	MVL25-1/2
2.5"	5/8"	1VL25-5/8PD	MVL25-5/8
2.87"	1/2"	1VL30-1/2PD	MVL30-1/2
2.87"	5/8"	1VL30-5/8PD	MVL30-5/8
3.15"	1/2"	1VL34-1/2PD	MVL34-1/2
3.15"	5/8"	1VL34-5/8PD	MVL34-5/8
3.15"	3/4"	1VL34-3/4PD	MVL34-3/4
3.75"	1/2"	1VL40-1/2PD	MVL40-1/2
3.75"	5/8"	1VL40-5/8PD	MVL40-5/8
3.75"	3/4"	1VL40-3/4PD	MVL40-3/4
3.75"	7/8"	1VL40-7/8PD	MVL40-7/8
4.15"	1/2"	1VL44-1/2PD	MVL44-1/2
4.15"	5/8"	1VL44-5/8PD	MVL44-5/8
4.15"	3/4"	1VL44-3/4PD	MVL44-3/4
4.15"	7/8"	1VL44-7/8PD	MVL44-7/8
4.75"	1/2"	1VM50-1/2PD	---
4.75"	5/8"	1VM50-5/8PD	---
4.75"	7/8"	1VM50-7/8PD	---

NOTE

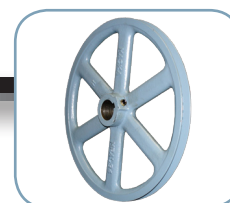
Use with A(4L), B(5L) & 3L V-belts.

SINGLE GROOVE FIXED BORE HVAC | CAST IRON

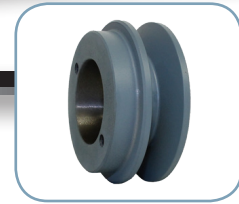
OUTSIDE DIAMETER	BORE SIZE	POWER DRIVE NUMBER	MASKA NUMBER
4.93"	5/8"	AL54-5/8	MFAL54-5/8
4.93"	3/4"	AL54-3/4	MFAL54-3/4
4.93"	1"	AL54-1	MFAL54-1
5.93"	5/8"	AL64-5/8	MFAL64-5/8
5.93"	3/4"	AL64-3/4	MFAL64-3/4
5.93"	1"	AL64-1	MFAL64-1
6.93"	5/8"	AL74-5/8	MFAL74-5/8
6.93"	3/4"	AL74-3/4	MFAL74-3/4
6.93"	1"	AL74-1	MFAL74-1
7.93"	5/8"	AL84-5/8	MFAL84-5/8
7.93"	3/4"	AL84-3/4	MFAL84-3/4
7.93"	1"	AL84-1	MFAL84-1
8.93"	3/4"	AL94-3/4	MFAL94-3/4
8.93"	1"	AL94-1	MFAL94-1
9.93"	3/4"	AL104-3/4	MFAL104-3/4
9.93"	1"	AL104-1	MFAL104-1
10.93"	3/4"	AL114-3/4	MFAL114-3/4
10.93"	1"	AL114-1	MFAL114-1
11.93"	3/4"	AL124-3/4	MFAL124-3/4
11.93"	1"	AL124-1	MFAL124-1
14.16"	3/4"	AM144-3/4	MFAM144-3/4
14.16"	1"	AM144-1	MFAM144-1

NOTE

Use with A(4L) V-belts.



SINGLE GROOVE "A/B" SECTION BUSHING TYPE | CAST IRON



OUTSIDE DIAMETER	POWER DRIVE NUMBER	MASKA NUMBER
3.15"	BK30H	MBL31
3.35"	BK32H	MBL33
3.55"	BK34H	MBL35
3.75"	BK36H	MBL37
3.95"	BK40H	MBL39
4.25"	BK45H	MBL42
4.45"	BK47H	MBL44
4.75"	BK50H	MBL47
4.95"	BK52H	MBL49
5.25"	BK55H	MBL52
5.45"	BK57H	MBL54
5.75"	BK60H	MBL57
5.95"	BK62H	MBL59
6.25"	BK65H	MBL62
6.45"	BK67H	MBL64
6.75"	BK70H	MBL67
6.95"	BK72H	MBL69
7.25"	BK75H	MBL72
7.45"	BK77H	MBL74
7.75"	BK80H	MBL77
8.25"	BK85H	MBL82
8.75"	BK90H	MBL87
9.25"	BK95H	MBL92
9.75"	BK100H	MBL97
10.25"	BK105H	MBL102
10.75"	BK110H	MBL107
11.25"	BK115H	MBL112
11.75"	BK120H	MBL117
12.75"	BK130H	MBL127
13.75"	BK140H	MBL137
14.75"	BK150H	MBL147
15.75"	BK160H	MBL157
18.75"	BK190H	MBL187

NOTE

Use with A(4L) & B(5L) V-belts.
Bushings on page 18.



DOUBLE GROOVE "A/B" SECTION FIXED BORE | CAST IRON

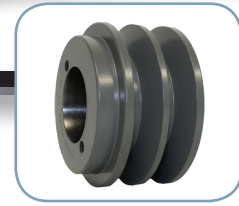
OUTSIDE DIAMETER	BORE SIZE	POWER DRIVE NUMBER	MASKA NUMBER
2.5"	1/2"	2BK25-1/2	2MB25-1/2
2.5"	5/8"	2BK25-5/8	2MB25-5/8
2.5"	7/8"	2BK25-7/8	2MB25-7/8
2.5"	1 1/8"	---	2MB25-1-1/8
2.95"	5/8"	2BK28-5/8	2MB30-5/8
2.95"	7/8"	2BK28-7/8	2MB30-7/8
2.95"	1 1/8"	2BK28-1-1/8	2MB30-1-1/8
3.95"	5/8"	2BK40-5/8	2MB40-5/8
3.95"	7/8"	2BK40-7/8	2MB40-7/8
3.95"	1 1/8"	2BK40-1-1/8	2MB40-1-1/8
4.45"	5/8"	---	2MB45-5/8
4.45"	7/8"	2BK47-7/8	2MB45-7/8
4.45"	1 1/8"	2BK47-1-1/8	2MB45-1-1/8
4.95"	5/8"	---	2MB50-5/8
4.95"	7/8"	2BK52-7/8	2MB50-7/8
4.95"	1 1/8"	2BK52-1-1/8	2MB50-1-1/8
5.45"	5/8"	---	2MB55-5/8
5.45"	7/8"	---	2MB55-7/8
5.45"	1 1/8"	2BK57-1-1/8	2MB55-1-1/8
5.95"	5/8"	---	2MB60-5/8
5.95"	7/8"	---	2MB60-7/8
5.95"	1 1/8"	2BK62-1-1/8	2MB60-1-1/8
6.75"	5/8"	---	2MB68-5/8
6.75"	1 1/8"	2BK70-1-1/8	2MB68-1-1/8
7.75"	5/8"	---	2MB78-5/8
7.75"	7/8"	---	2MB78-7/8
7.75"	1 1/8"	2BK80-1-1/8	2MB78-1-1/8
8.75"	1 1/8"	2BK90-1-1/8	2MB88-1-1/8

NOTE

Use with A(4L) & B(5L) V-belts.
Additional sizes available.



DOUBLE GROOVE "A/B" SECTION BUSHING TYPE | CAST IRON



OUTSIDE DIAMETER	POWER DRIVE NUMBER	MASKA NUMBER
3.35"	2BK32H	2MBL33
3.55"	2BK34H	2MBL35
3.75"	2BK36H	2MBL37
3.95"	2BK40H	2MBL39
4.25"	2BK45H	2MBL42
4.45"	2BK47H	2MBL44
4.75"	2BK50H	2MBL47
4.95"	2BK52H	2MBL49
5.25"	2BK55H	2MBL52
5.45"	2BK57H	2MBL54
5.75"	2BK60H	2MBL57
5.95"	2BK62H	2MBL59
6.25"	2BK65H	2MBL62
6.45"	2BK67H	2MBL64
6.75"	2BK70H	2MBL67
6.95"	---	2MBL69
7.75"	2BK80H	2MBL77
8.75"	2BK90H	2MBL87
9.75"	2BK100H	2MBL97

NOTE

Use with A(4L) & B(5L) V-belts.
Additional sizes available.

SPLIT TAPER BUSHINGS



POWER DRIVE NUMBER	BORE SIZE
H-1/2	1/2"
H-9/16	9/16"
H-5/8	5/8"
H-3/4	3/4"
H-7/8	7/8"
H-1	1"
H-1-1/16	1 1/16"
H-1-1/8	1 1/8"
H-1-3/16	1 3/16"
H-1-1/4	1 1/4"
H-1-5/16	1 5/16"
H-1-3/8	1 3/8"
H-1-7/16	1 7/16"
H-1-1/2	1 1/2"

QD BUSHINGS



MASKA NUMBER	BORE SIZE
L-1/2	1/2"
L-9/16	9/16"
L-5/8	5/8"
L-3/4	3/4"
L-7/8	7/8"
L-1	1"
L-1-1/16	1 1/16"
L-1-1/8	1 1/8"
L-1-3/16	1 3/16"
L-1-1/4	1 1/4"
L-1-5/16	1 5/16"
L-1-3/8	1 3/8"
L-1-7/16	1 7/16"
L-1-1/2	1 1/2"



SINGLE GROOVE FIXED BORE 'A' SECTION | DIE CAST

OUTSIDE DIAMETER	BORE SIZE	STOCK NUMBER
1.5"	3/8"	150-A-3/8
1.75"	3/8"	175-A-3/8
1.75"	1/2"	175-A-1/2
1.75"	3/4"	175-A-3/4+
2.0"	3/8"	200-A-3/8
<hr/>		
2.0"	1/2"	200-A-1/2
2.0"	3/4"	200-A-3/4+
2.25"	3/8"	225-A-3/8
2.25"	1/2"	225-A-1/2
2.5"	3/8"	250-A-3/8
<hr/>		
2.5"	1/2"	250-A-1/2
3.0"	1/2"	300-A-1/2
3.0"	5/8"	300-A-5/8
3.0"	3/4"	300-A-3/4+
3.25"	1/2"	325-A-1/2
<hr/>		
3.25"	5/8"	325-A-5/8
3.5"	1/2"	350-A-1/2
3.5"	5/8"	350-A-5/8
4.0"	1/2"	400-A-1/2
4.0"	5/8"	400-A-5/8
<hr/>		
4.5"	1/2"	450-A-1/2
4.5"	5/8"	450-A-5/8
5.0"	1/2"	500-A-1/2
5.0"	5/8"	500-A-5/8
5.5"	1/2"	550-A-1/2
<hr/>		
5.5"	5/8"	550-A-5/8
6.0"	1/2"	600-A-1/2
6.0"	5/8"	600-A-5/8

NOTE

Use with A(4L) V-belts.

+Discontinued, while supplies last.



SINGLE GROOVE FIXED BORE 'B' SECTION | DIE CAST

OUTSIDE DIAMETER	BORE SIZE	STOCK NUMBER
2.25"	1/2"	225-B-1/2+
2.25"	5/8"	225-B-5/8+
2.75"	5/8"	275-B-5/8+
3.0"	1/2"	300-B-1/2
3.25"	1/2"	325-B-1/2+
<hr/>		
3.25"	5/8"	325-B-5/8+
3.5"	1/2"	350-B-1/2+
3.5"	5/8"	350-B-5/8+
4.0"	1/2"	400-B-1/2+
4.0"	5/8"	400-B-5/8+
<hr/>		
4.25"	5/8"	400-B-5/8+

NOTE

+Discontinued, while supplies last.

VARIABLE PITCH SINGLE GROOVE HVAC | DIE CAST

OUTSIDE DIAMETER	BORE SIZE	STOCK NUMBER
3.25"	1/2"	325VP-1/2
3.25"	5/8"	325VP-5/8
3.5"	1/2"	350VP-1/2
3.5"	5/8"	350VP-5/8
3.75"	1/2"	375VP-1/2
<hr/>		
3.75"	5/8"	375VP-5/8
4.0"	1/2"	400VP-1/2
4.0"	5/8"	400VP-5/8



MULTIPLE GROOVE "A" SECTION STEP PULLEYS | DIE CAST

# OF STEPS	1ST STEP	2ND STEP	3RD STEP	4TH STEP	BORE SIZE	STOCK NUMBER
2	2"	2 1/2"	---	---	1/2"	113-1/2
	2"	2 1/2"	---	---	5/8"	113-5/8
	2"	3"	---	---	1/2"	150-1/2
3	1 3/4"	2 1/4"	2 3/4"	---	1/2"	145-1/2
	2 1/4"	2 3/4"	3 1/4"	---	1/2"	144-1/2+
	2 1/4"	2 3/4"	3 1/4"	---	3/4"	144-3/4+
	2"	3"	4"	---	1/2"	146-1/2
	2"	3"	4"	---	5/8"	146-5/8
	3"	3 1/2"	4"	---	1/2"	149-1/2
4	3 1/2"	4"	4 1/2"	---	5/8"	148-5/8
	2"	2 1/2"	3 1/2"	4"	5/8"	141-5/8
	2"	2 1/2"	3 1/2"	4"	3/4"	141-3/4
	3"	3 1/2"	4"	4 1/2"	1/2"	143-1/2
	3"	3 1/2"	4"	4 1/2"	5/8"	143-5/8



NOTE

+Discontinued, while supplies last.



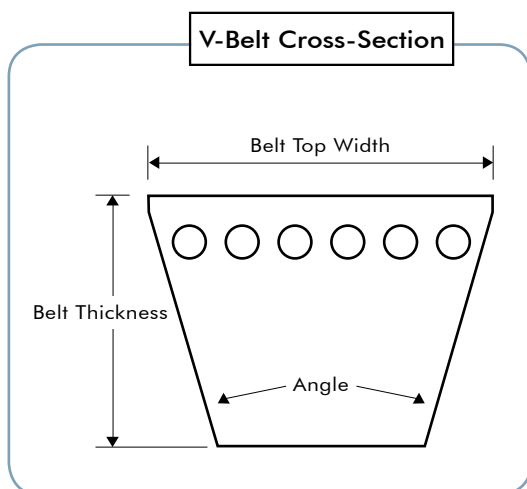
V-BELTS | POWERTWIST PLUS



BELT SECTION	BELT LENGTH	STOCK NUMBER
3L	25'	405010+
3L	10m	410010
3L	30m	418013
4L(A)	10m	410030
4L(A)	30m	418033
5L(B)	25'	405050+
5L(B)	10m	410050
5L(B)	30m	418053
5L(B)	6'	418050-1+
C	10m	410070
C	30m	418073

NOTE

+Discontinued, while supplies last.



DIMENSIONS

V-BELTS	TOP WIDTH	THICKNESS	ANGLE
3L	0.38"	0.24"	40
A OR 4L	0.51"	0.34"	40
B OR 5L	0.66"	0.43"	40

V-BELTS | 3L

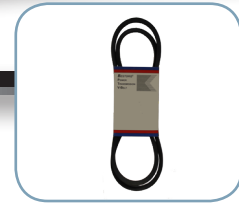


OUTSIDE LENGTH	STOCK NUMBER	OUTSIDE LENGTH	STOCK NUMBER
13"	3L130	28"	3L280
14"	3L140	29"	3L290
15"	3L150	30"	3L300
16"	3L160	31"	3L310
17"	3L170	32"	3L320
18"	3L180	33"	3L330
19"	3L190	34"	3L340
20"	3L200	35"	3L350
21"	3L210	36"	3L360
22"	3L220		
23"	3L230		
24"	3L240		
25"	3L250		
26"	3L260		
27"	3L270		

NOTE

Additional sizes available.

V-BELTS | A(4L)



OUTSIDE LENGTH	REFERENCE NUMBER	STOCK NUMBER	OUTSIDE LENGTH	REFERENCE NUMBER	STOCK NUMBER
15"	4L150	A13	60"	4L600	A58
16"	4L160	A14	61"	4L610	A59
17"	4L170	A15	62"	4L620	A60
18"	4L180	A16	63"	4L630	A61
19"	4L190	A17	64"	4L640	A62
20"	4L200	A18	65"	4L650	A63
21"	4L210	A19	66"	4L660	A64
22"	4L220	A20	67"	4L670	A65
23"	4L230	A21	68"	4L680	A66
24"	4L240	A22	69"	4L690	A67
25"	4L250	A23	70"	4L700	A68
26"	4L260	A24	71"	4L710	A69
27"	4L270	A25	72"	4L720	A70
28"	4L280	A26	73"	4L730	A71
29"	4L290	A27	74"	4L740	A72
30"	4L300	A28	75"	4L750	A73
31"	4L310	A29	76"	4L760	A74
32"	4L320	A30	77"	4L770	A75
33"	4L330	A31	78"	4L780	A76
34"	4L340	A32	79"	4L790	A77
35"	4L350	A33	80"	4L800	A78
36"	4L360	A34	81"	4L810	A79
37"	4L370	A35	82"	4L820	A80
38"	4L380	A36	83"	4L830	A81
39"	4L390	A37	84"	4L840	A82
40"	4L400	A38	85"	4L850	A83
41"	4L410	A39	86"	4L860	A84
42"	4L420	A40	87"	4L870	A85
43"	4L430	A41	88"	4L880	A86
44"	4L440	A42	89"	4L890	A87
45"	4L450	A43	90"	4L900	A88
46"	4L460	A44	91"	4L910	A89
47"	4L470	A45	92"	4L920	A90
48"	4L480	A46	93"	4L930	A91
49"	4L490	A47	94"	4L940	A92
50"	4L500	A48	95"	4L950	A93
51"	4L510	A49	96"	4L960	A94
52"	4L520	A50			
53"	4L530	A51			
54"	4L540	A52			
55"	4L550	A53			
56"	4L560	A54			
57"	4L570	A55			
58"	4L580	A56			
59"	4L590	A57			

NOTE

AX Series available upon request.
Additional sizes available.

V-BELTS | B(5L)



OUTSIDE LENGTH	REFERENCE NUMBER	STOCK NUMBER	OUTSIDE LENGTH	REFERENCE NUMBER	STOCK NUMBER
23"	5L230	B20	68"	5L680	B65
24"	5L240	B21	69"	5L690	B66
25"	5L250	B22	70"	5L700	B67
26"	5L260	B23	71"	5L710	B68
27"	5L270	B24	72"	5L720	B69
28"	5L280	B25	73"	5L730	B70
29"	5L290	B26	74"	5L740	B71
30"	5L300	B27	75"	5L750	B72
31"	5L310	B28	76"	5L760	B73
32"	5L320	B29	77"	5L770	B74
33"	5L330	B30	78"	5L780	B75
34"	5L340	B31	79"	5L790	B76
35"	5L350	B32	80"	5L800	B77
36"	5L360	B33	81"	5L810	B78
37"	5L370	B34	82"	5L820	B79
38"	5L380	B35	83"	5L830	B80
39"	5L390	B36	84"	5L840	B81
40"	5L400	B37	85"	5L850	B82
41"	5L410	B38	86"	5L860	B83
42"	5L420	B39	87"	5L870	B84
43"	5L430	B40	88"	5L880	B85
44"	5L440	B41	89"	5L890	B86
45"	5L450	B42	90"	5L900	B87
46"	5L460	B43	91"	5L910	B88
47"	5L470	B44	92"	5L920	B89
48"	5L480	B45	93"	5L930	B90
49"	5L490	B46	94"	5L940	B91
50"	5L500	B47	95"	5L950	B92
51"	5L510	B48	96"	5L960	B93
52"	5L520	B49			
53"	5L530	B50			
54"	5L540	B51			
55"	5L550	B52			
56"	5L560	B53			
57"	5L570	B54			
58"	5L580	B55			
59"	5L590	B56			
60"	5L600	B57			
61"	5L610	B58			
62"	5L620	B59			
63"	5L630	B60			
64"	5L640	B61			
65"	5L650	B62			
66"	5L660	B63			
67"	5L670	B64			

NOTE

BX Series available upon request.
Additional sizes available.

STANDARD SOLID STATE

1140 HP	1725 HP	3450 HP	DIAMETER	LENGTH	STOCK NUMBER
1/4-3/4	1/4-1/2	1/4-1/3	2 3/8"	3 3/4"	MODEL A
1-1 1/2	3/4-1	1/2-3/4	2 3/8"	3 3/4"	MODEL B
2-3	1 1/2-2	1-1 1/2	2 3/8"	3 3/4"	MODEL C
3	3	2	2 3/8"	4 3/4"	MODEL D
5	5	3	2 7/8"	4 3/4"	MODEL E
7 1/2	7 1/2	5	2 7/8"	4 3/4"	MODEL H
10	10	7 1/2	2 7/8"	4 3/4"	MODEL K



**FOR OPERATING
3-PHASE 230V MOTORS
WITH SINGLE PHASE
230V INPUT**

NOTE

Some old large frame motors may require the next larger model.

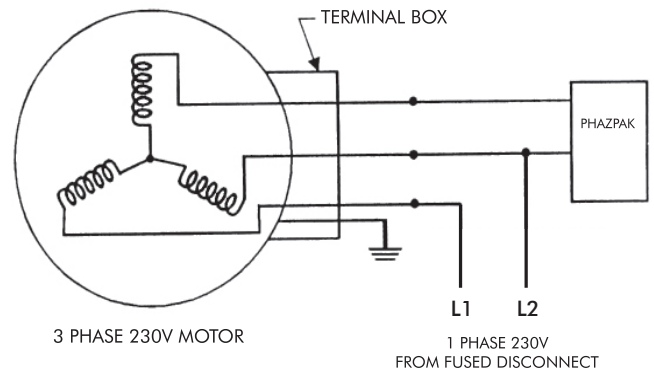
GOOD TO KNOW...

UP TO 75% HP EFFICIENCY...

FOR USE ON LIGHT-MEDIUM STARTING LOADS, WHERE FULL HP IS NOT REQUIRED...

STANDARD SOLID STATE MODELS CAN BE USED IN REVERSING APPLICATIONS...

IDEAL APPLICATIONS: LATHES, MILLING MACHINES, DRILL PRESSES, SEWING MACHINES, AND GRINDERS...



RECOMMENDED MOTOR FUSE PROTECTION

HP	TIME DELAY 230V FUSES
1/4	3 AMP
1/3	5 AMP
1/2	5 AMP
3/4	7.5 AMP
1	10 AMP
1 1/2	10 AMP
2	15 AMP
3	20 AMP
5	25 AMP
7 1/2	30 AMP
10	40 AMP

PREMIUM SOLID STATE

HP	370V RUN CAP REQUIRED	DIAMETER	LENGTH	STOCK NUMBER
1/4	5 MFD	2 3/8"	4 3/8"	MODEL A-R3
1/3	10 MFD	2 3/8"	4 3/8"	
1/3	10 MFD	2 3/8"	4 3/8"	MODEL B-R3
1/2	15 MFD	2 3/8"	4 3/8"	
3/4	20 MFD	2 3/8"	4 3/8"	MODEL C-R3
1	30 MFD	2 3/8"	4 3/8"	
1 1/2	40 MFD	2 3/8"	4 3/8"	MODEL D-R3
2	45 MFD	2 3/8"	4 3/8"	
3	70 MFD	3"	5 1/2"	MODEL E-R3
5	110 MFD	3"	5 1/2"	MODEL H-R3
7 1/2	160 MFD	3"	5 1/2"	MODEL K-R3
10	200 MFD	3"	5 1/2"	MODEL N-R3



**FOR OPERATING
3-PHASE 230V MOTORS
WITH SINGLE PHASE
230V INPUT**

GOOD TO KNOW...

UP TO 93% HP EFFICIENCY...

FOR USE ON HEAVY STARTING LOADS, WHERE NEAR FULL HP IS REQUIRED...

IDEAL APPLICATIONS: METAL WORKING, FARM EQUIPMENT, FOOD PROCESSING, SAWS, PRESSES, WOOD WORKING, CONVEYORS, **AIR COMPRESSORS (MUST REDUCE DRIVE PULLEY BY 20%)**.

COMPLETE UNIT | WITH CAPACITORS AND ENCLOSURE

HP	LENGTH	WIDTH	HEIGHT	STOCK NUMBER
1/4	10"	8"	4"	PR-1/4
1/3	10"	8"	4"	PR-1/3
1/2	10"	8"	4"	PR-1/2
3/4	10"	8"	4"	PR-3/4
1	10"	8"	4"	PR-1
1	10"	8"	4"	PR-1SS
1 1/2	10"	8"	4"	PR-1.5
2	10"	8"	4"	PR-2
2	10"	8"	4"	PR-2SS
3	12"	10"	6"	PR-3
3	12"	10"	6"	PR-3SS
5	12"	10"	6"	PR-5
5	12"	10"	6"	PR-5SS
7 1/2	12"	10"	6"	PR-7.5
10	12"	10"	6"	PR-10



NOTE

These models are completely assembled with capacitors in NEMA 3R enclosure.

Motors at or below 900 RPM drop one model size.

SS models have a stainless steel enclosure.

Max start time is 3 seconds.

STANDARD ROTARY | LESS BOX, CAPACITORS, STARTER, AND IDLER MOTOR

IDLER HP @ 1725 RPM REQUIRED (NOT INCLUDED)	370V RUN CAP REQUIRED (NOT INCLUDED)	DIAMETER	LENGTH	STOCK NUMBER
1/2	15 MFD	2 3/8"	4 3/8"	MODEL A-I
3/4	20 MFD	2 3/8"	4 3/8"	
1	30 MFD	2 3/8"	4 3/8"	
1 1/2	40 MFD	2 3/8"	4 3/8"	MODEL B-I
2	50 MFD	2 3/8"	4 3/8"	
3	70 MFD	2 3/8"	4 3/8"	MODEL C-I
5	110 MFD	2 3/8"	4 3/8"	MODEL D-I
7.5	160 MFD	3"	5 1/2"	MODEL E-I
10	220 MFD	3"	5 1/2"	MODEL H-I
15	320 MFD	3"	5 1/2"	MODEL K-I
20	400 MFD	3"	5 1/2"	MODEL N-I



**FOR OPERATING
3-PHASE 230V MOTORS
WITH SINGLE PHASE
230V INPUT**

GOOD TO KNOW...

THESE MODELS REQUIRE AN IDLER MOTOR

THAT IS AT LEAST 50% LARGER THAN THE LARGEST MOTOR BEING STARTED...

PACKAGED ROTARY | LESS IDLER MOTOR

IDLER HP (REQUIRED)	LENGTH	WIDTH	HEIGHT	STOCK NUMBER
1	12"	10"	6"	PRT-1
1 1/2	12"	10"	6"	PRT-1.5
2	12"	10"	6"	PRT-2
3	12"	10"	6"	PRT-3
5	12"	10"	6"	PRT-5
7 1/2	14"	12"	6"	PRT-7.5
10	14"	12"	6"	PRT-10
15	20"	16"	6"	PRT-15
20	20"	16"	6"	PRT-20
25	20"	16"	8"	PRT-25
30	20"	16"	8"	PRT-30
40	20"	16"	8"	PRT-40
50	24"	24"	8"	PRT-50
60	24"	24"	8"	PRT-60
75	24"	24"	8"	PRT-75



GOOD TO KNOW...

USE ONLY WITH 1725 RPM IDLER MOTORS...

INCLUDES STARTER AND CAPACITORS ASSEMBLED IN A NEMA 3R ENCLOSURE...

IDEAL APPLICATIONS ARE VIRTUALLY UNLIMITED...

FOR USE ON HEAVY STARTING LOADS, WHERE FULL HP IS REQUIRED...

COMPLETE ROTARY | COMPLETELY ASSEMBLED WITH IDLER MOTORS



IDLER HP (REQUIRED)	STOCK NUMBER
1	RT-1
1 1/2	RT-1.5
2	RT-2
3	RT-3
5	RT-5
<hr/>	
7 1/2	RT-7.5
10	RT-10
15	RT-15
20	RT-20
25	RT-25
<hr/>	
30	RT-30
40	RT-40
50	RT-50
60	RT-60
75	RT-75

FOR OPERATING
3-PHASE 230V MOTORS
WITH SINGLE PHASE
230V INPUT

GOOD TO KNOW...

CAN BE CONVERTED FOR CNC MACHINES...

FOR USE ON HEAVY STARTING LOADS, WHERE FULL HP IS REQUIRED...

THESE ASSEMBLED UNITS CONTAIN CONVERTER, STARTER, SWITCH AND CAPACITORS IN A NEMA 3R ENCLOSURE WHICH ARE MOUNTED TO A TEFC CAST IRON ENERGY EFFICIENT IDLER MOTOR...

IDLER HP SHOULD BE AT LEAST 50% LARGER THAN THE LARGEST MOTOR BEING STARTED...

WHEN STARTING MORE THAN ONE MOTOR AT A TIME, THE TOTAL COMBINED HP MUST NOT EXCEED 75% OF THE IDLER MOTOR HP...

WHEN RUNNING MORE THAN ONE MOTOR AT A TIME, THE TOTAL COMBINED HP MUST NOT EXCEED FOUR TIMES THE IDLER MOTOR HP...

SOFT START AND/OR 460V MODELS ARE AVAILABLE, CALL FOR DETAILS...



PHASE CONVERTER/VARIABLE FREQUENCY DRIVE

MAX CONTINUOUS LOAD CURRENT	MAX HP	FIG.	LENGTH	WIDTH	HEIGHT	STOCK NUMBER
2.4 AMPS	1/2	A	4.3"	3.8"	2.5"	KBVF-23D
4.0 AMPS	1	A	4.7"	4.3"	5.0"	KBVF-24D
5.5 AMPS	2	A	5.7"	4.7"	5.7"	KBVF-26D
3.6 AMPS	1	B	4.9"	3.2"	7.0"	KBMA-24D



KBVF-23D



KBMA-24D

KBMA-24D INCLUDES ALL THE FEATURES OF THE KBVFs WITH THE ADDITION OF A NEMA 1 ENCLOSURE.

FEATURES

PHASE CONVERTER OPERATES STANDARD 208/230V, 3-PHASE AC MOTORS WITH 115V OR 208/230V SINGLE PHASE INPUT (SPEED POTENTIOMETER MUST BE CONNECTED)

SLIP COMPENSATION WITH STATIC AUTO-TUNE AND BOOST PROVIDE EXCELLENT LOAD REGULATION OVER A WIDE SPEED RANGE.

POWER START™ PROVIDES MORE THAN 200% STARTING TORQUE.

SIMPLE OPERATION DOES NOT REQUIRE PROGRAMMING. USES TRIMPOTS AND JUMPERS, WHICH ARE FACTORY SET FOR MOST APPLICATIONS.

SPEED RANGE IS 60:1 OR 30:1 WITH FULL MOTOR TORQUE.

MAIN SPEED POTENTIOMETER INCLUDED WITH ALL MODELS.

JUMPER SELECTION OF DRIVE OUTPUT FREQUENCY INCREASES THE MOTOR SPEED UP TO TWO TIMES THE RATED RPM.

PROTECTION FEATURES

MOTOR OVERLOAD (i²t) WITH RMS CURRENT LIMITS: PROVIDES MOTOR OVERLOAD PROTECTION WHICH PREVENTS MOTOR BURNOUT AND ELIMINATES NUISANCE TRIPS.

ELECTRONIC INRUSH CURRENT LIMIT (EICL™): ELIMINATES HARMFUL INRUSH AC LINE CURRENT DURING STARTUP.

SHORT CIRCUIT: SHUTS DOWN THE DRIVE IF A SHORT CIRCUIT OCCURS AT THE MOTOR (PHASE-TO-PHASE).

REGENERATION: ELIMINATES TRIPPING DUE TO BUS OVERVOLTAGE CAUSED BY RAPID DECELERATION OF HIGH INERTIAL LOADS.

OVERVOLTAGE AND UNDERVOLTAGE: SHUTS DOWN THE DRIVE IF THE AC LINE INPUT VOLTAGE GOES ABOVE OR BELOW THE OPERATING RANGE.

MOV INPUT TRANSIENT SUPPRESSION.

MICROCONTROLLER SELF MONITORING AND AUTO-REBOOT.

GOOD TO KNOW...

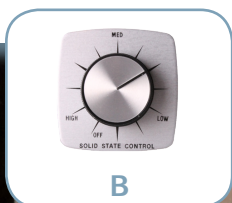
THESE MODELS COMBINE THE FLEXIBILITY OF A FULL FEATURED DRIVE WITH THE CONVENIENCE OF A PHASE CONVERTER, ALL IN ONE LOW COST, EASY TO USE PACKAGE...

SOLID STATE SPEED CONTROLS

VOLTS	AMP	FIGURE	REPLACES AO SMITH	PEMS
115	3.0	A	---	A177-1001
115	4.0	B	1234A	A177-1004
115	2.5	C	---	K177-1002
115	5.0	C	1233A	K177-1005
115	6.0	C	---	K177-1006
115	8.0	C	---	K177-1008
115	10.0	D	1408A	K177-1010
115	15.0	D	---	K177-1015
240	2.5	C	---	K177-2002
240	5.0	C	1407A	K177-2005
240	8.0	C	---	K177-2008
240	10.0	D	---	K177-2010
277	6.0	C	---	K177-2706
277	15.0	D	---	K177-2715



A



B



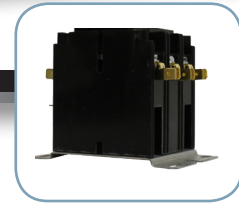
C



D



DEFINITE PURPOSE CONTACTORS | FASCO



POLES	AMPS	COIL VOLTS	USE AUX. SWITCH	STOCK NUMBER
1	30	24	H6S OR H7S	H130A
1	30	120	H6S OR H7S	H130B
1	30	208/240	H6S OR H7S	H130C
1	40	24	H6S OR H7S	H140A
1	40	120	H6S OR H7S	H140B
1	40	208/240	H6S OR H7S	H140C
2	30	24	H6S OR H7S	H230A
2	30	120	H6S OR H7S	H230B
2	30	208/240	H6S OR H7S	H230C
2	40	24	H6S OR H7S	H240A
2	40	120	H6S OR H7S	H240B
2	40	208/240	H6S OR H7S	H240C
3	30	24	H6S OR H7S	H330A
3	30	120	H6S OR H7S	H330B
3	30	208/240	H6S OR H7S	H330C
3	40	24	H6S OR H7S	H340A
3	40	120	H6S OR H7S	H340B
3	40	208/240	H6S OR H7S	H340C
3	50	24	H6S OR H7S	H350A
3	50	120	H6S OR H7S	H350B
3	50	208/240	H6S OR H7S	H350C
3	60	24	H6S OR H7S	H360A
3	60	120	H6S OR H7S	H360B
3	60	208/240	H6S OR H7S	H360C
3	75	24	H9S	H375AC
3	75	120	H9S	H375BC
3	75	208/240	H9S	H375CC
3	90	24	H9S	H390AC
3	90	120	H9S	H390BC
3	90	208/240	H9S	H390CC
4	30	24	H6S OR H7S	H430A
4	30	120	H6S OR H7S	H430B
4	30	208/240	H6S OR H7S	H430C
4	40	24	H6S OR H7S	H440A
4	40	120	H6S OR H7S	H440B
4	40	208/240	H6S OR H7S	H440C

REVERSING CONTACTORS | FASCO



POLES	AMPS	COIL VOLTS	USE AUX. SWITCH	STOCK NUMBER
3	30	24	H6S OR H7S	H3R30A
3	30	120	H6S OR H7S	H3R30B
3	30	208/240	H6S OR H7S	H3R30C



H6S



H7S



H9S

AUXILIARY SWITCHES | FASCO

TYPE	FASCO MODEL
SPDT	H6S
DUAL SPDT	H7S
SPDT	H9S

10 AMP @ 1/3 HP, 125 OR 250 VAC

1/2 AMP @ 125 VDC

1/4 AMP @ 250 VDC

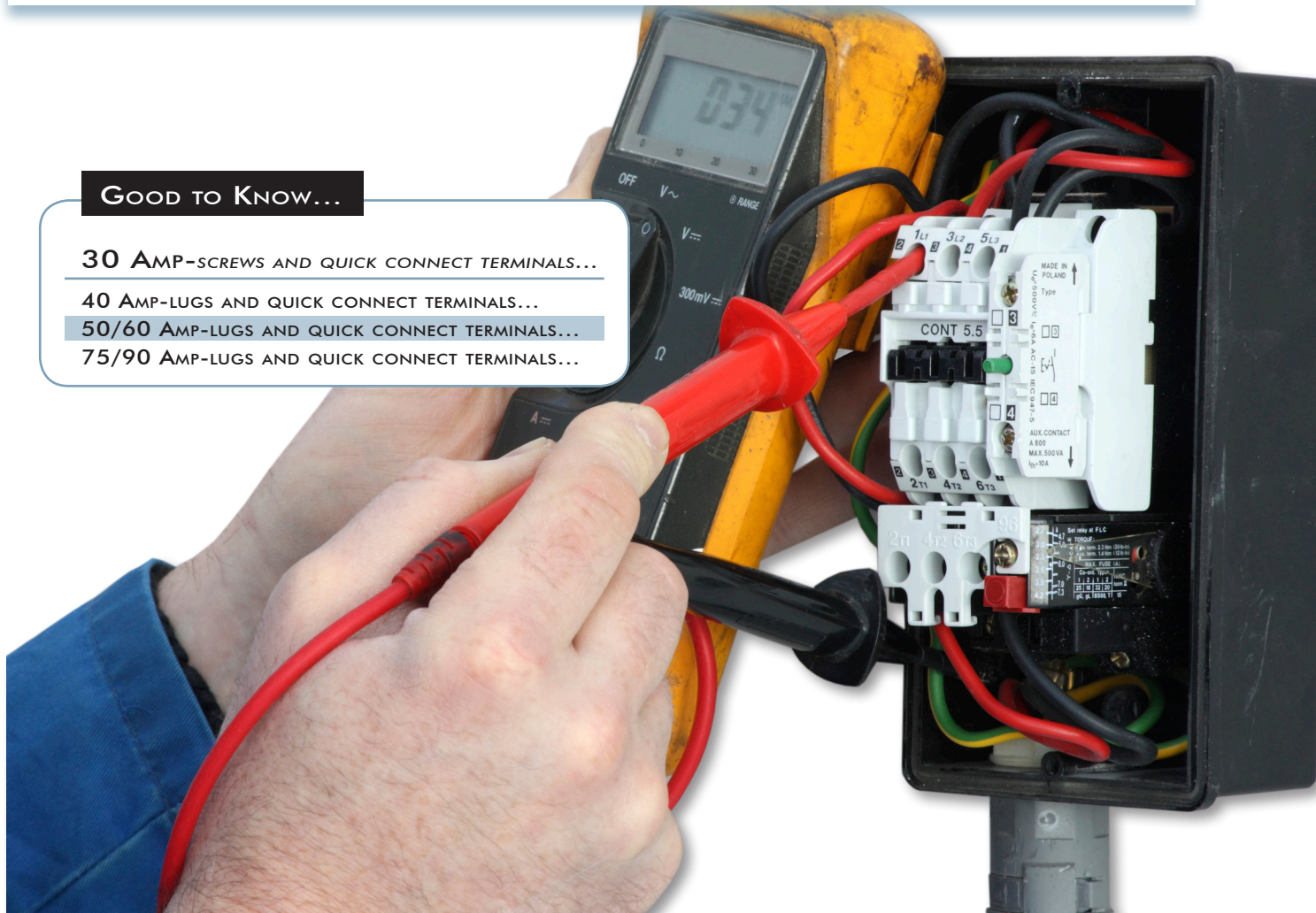
GOOD TO KNOW...

30 AMP-SCREWS AND QUICK CONNECT TERMINALS...

40 AMP-LUGS AND QUICK CONNECT TERMINALS...

50/60 AMP-LUGS AND QUICK CONNECT TERMINALS...

75/90 AMP-LUGS AND QUICK CONNECT TERMINALS...



DEFINITE PURPOSE CONTACTORS | ROTOM



POLES	AMPS	COIL VOLTS	REPLACES FURNAS #	STOCK NUMBER
1.5	30	24	45EG10AJA	DP-1P30A24
1.5	30	120	45EG10AFA	DP-1P30A120
1.5	30	240	45EG10AGA	DP-1P30A240
2	30	24	45EG20AJ	DP-2P30A24
2	30	120	45EG20AF	DP-2P30A120
2	30	240	45EG20AG	DP-2P30A240
2	40	24	45GG20AJ	DP-2P40A24
2	40	120	45GG20AF	DP-2P40A120
2	40	240	45GG20AG	DP-2P40A240
3	30	24	42BF35AJ	DP-3P30A24
3	30	120	42BF35AF	DP-3P30A120
3	30	240	42BF35AG	DP-3P30A240
3	40	24	42CF35AJ	DP-3P40A24
3	40	120	42CF35AF	DP-3P40A120
3	40	240	42CF35AG	DP-3P40A240
3	50	24	42DF35AJ	DP-3P50A24
3	50	120	42DF35AF	DP-3P50A120
3	50	240	42DF35AG	DP-3P50A240
3	60	24	42EF35AJ	DP-3P60A24
3	60	120	42EF35AF	DP-3P60A120
3	60	240	42EF35AG	DP-3P60A240
4	30	24	42BF25AJ	DP-4P30A24
4	30	120	42BF25AF	DP-4P30A120
4	30	240	42BF25AG	DP-4P30A240
4	40	24	42CF25AJ	DP-4P40A24
4	40	120	42CF25AF	DP-4P40A120
4	40	240	42CF25AG	DP-4P40A240

AUXILLARY SWITCHES | ROTOM

TYPE	ROTOM MODEL
SPDT, N/O & N/C	DP-AS7
Dual SPDT, N/O & N/C	DP-AS8



FOR USE WITH
ROTOM 30-60 AMP, THREE AND FOUR POLE CONTACTORS

HIGH-LOW WATER ALARM |

- USER SAFE 9-VOLT AC POWER, 9-VOLT DC BACKUP.
- EASY CONVERSION FROM HIGH WATER TO LOW WATER ALARM.
- 95 DECIBEL SOUND ALARM.
- RELIABLE NON-MERCURY FLOAT SWITCH WITH 10 FT. CORD.
- EASY INSTALLATION.
- ATTACHMENT STRAP INCLUDED.
- CORROSION RESISTANT ABS FLOAT.
- 9-VOLT TRANSFORMER AND FLOAT SWITCH WITH CORD ARE UL LISTED AND CPA APPROVED.
- TEST BUTTON.
- 1 YEAR LIMITED WARRANTY.



WA9-04

FAILED CIRCUIT ALARM |

- EASY INSTALLATION.
- VELCRO MOUNT.
- 12' CORD.
- 9 VOLT SYSTEM.
- 85 TO 90 DECIBEL ALARM BUZZER.
- 110/120 VOLT STANDARD TRANSFORMER.
- TOGGLE ON/OFF SWITCH TO SILENCE ALARM BUZZER.
- ALARM BUZZER/BATTERY TEST BUTTON.
- GREEN POWER PRESENT INDICATOR.
- 1 YEAR WARRANTY.



FCA-12

MECHANICAL FLOAT SWITCH |

VOLTS	AMPS	CORD LENGTH	STOCK NUMBER
115	15	10'	CSH-1
230	12	10'	CSH-2
115	15	20'	CSH-1-20
230	12	20'	CSH-2-20



RESILIENT MOUNTING BASE INDEX | FASCO

FASCO MODEL	BASE LENGTH	FASCO MODEL	BASE LENGTH	FASCO MODEL	BASE LENGTH	FASCO MODEL	BASE LENGTH
D112	517*	D474	542	D807	435	D1051	408
D117	386	D480	542	D812	492	D1061	492
D148	354	D481	542	D814	435	D1065	408*
D150	492*	D482	492	D816	461	D1086	435
D151	492*	D483	492	D818	705*	D1089	435
D152	492*	D484	492	D821	542	D1246	435
D154	558	D485	492	D823	595	D1709	595*
D156	479*	D486	517*	D825	705	D1710	705*
D158	479	D487	517*	D831	705*	D1745	558
D160	479	D488	517	D838	595	D1748	461
D164	479*	D489	542	D860	595	D1749	461
D166	479*	D490	558	D870	542	D1853	492
D174	417	D491	558	D879	461	D1910	595
D176	354*	D492	558	D896	435	D1911	558
D178	417	D493	558	D897	435	D2700	595
D221	417	D494	492	D902	595	D2701	558
D224	435	D495	492	D910	595	D2702	595*
D236	435	D497	542	D911	558	D2703	595*
D245	558	D635	435	D912	479	D2704	595*
D247	479	D655	435	D913	479	D2705	705
D249	354	D656	479	D914	595	D2814	595*
D250	435	D658	479	D915	595	D2817	595*
D252	354	D701	595	D916	595	D2832	595*
D253	354	D703	558	D918	479	D2833	595
D254	417	D711	595	D920	595	D7745	517
D255	417	D721	461	D923	492	D7748	492
D256	479*	D723	517	D927	435	D7749	435
D257	417	D725	461	D928	435	S2846	705
D258	435	D726	558*	D929	558*	S156	435
D260	479	D727	479	D930	558*		
D261	461	D728	595	D935	558		
D264	408*	D729	595	D937	461		
D277	479	D730	595	D939	461		
D290	435*	D733	492	D940	595*		
D312	492	D735	595	D951	595*		
D314	517*	D737	517	D966	517*		
D316	461*	D739	492	D967	558		
D329	435	D745	517	D968	595		
D333	386*	D746	517	D970	595		
D335	408	D747	542	D971	542		
D336	435	D748	492	D972	492		
D337	435	D780	517	D973	461		
D338	492	D782	492	D974	595		
D339	492	D783	461	D975	461		
D347	386	D784	558	D1015	435		
D354	479	D785	542	D1016	479		
D356	417	D786	595	D1025	492		
D382	386	D787	492	D1033	479		
D389	408	D788	558	D1042	492		
D435	517*	D789	592	D1046	386		

**NOMENCLATURE
30-479**

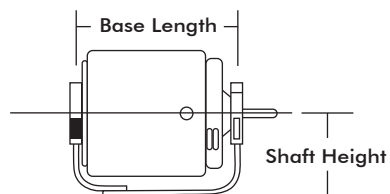


NOTE
*May need to reverse one or more mounting rings.



CRADLE BASE

BASE LENGTH	3 1/2" SHAFT HEIGHT BASE No.	3" SHAFT HEIGHT BASE No.	2 11/16" SHAFT HEIGHT BASE No.
3.54"	35-354	30-354	---
3.67"	1343	1342	---
3.86"	35-386	30-386	---
3.94"	2062	2061	1205
4.08"	35-408	30-408	---
4.17"	35-417	---	1206
4.35"	35-435	30-435	---
4.42"	2044	1422	---
4.61"	35-461	30-461	1207
4.79"	35-479	30-479	---
4.92"	35-492	30-492	---
5.17"	35-517	30-517	2089
5.42"	35-542	30-542	2090
5.58"	35-558	30-558	---
5.67"	1419	1293	---
5.95"	35-595	30-595	---
7.05"	35-705	30-705	---



BASE CLAMPS

Stock No. 8582-6004

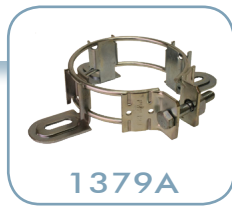


BAND MOUNTING KITS | FASCO

MOTOR DIAMETER	LUG SIZE	BOLT CIRCLE RANGE	STOCK NUMBER
3.3"	SMALL	4 5/8"-5 7/8"	1379A
3.3"	LARGE	4 11/16"-9 7/8"	KIT 34
3.3"	LARGE	4 1/2"-10"	33L
4.4" & 5.0"	LARGE	6 1/2"-11 8/16"	50L
5.0"	LARGE	6 7/16"-11 11/16"	KIT 50
5.5"	SMALL	6 7/8"-8 1/8"	55S
5.5"	LARGE	8 1/8"-12 1/8"	55L
5.0"	LARGE	9.8"	KIT 315
5.6"	LARGE	9.8"	KIT317

3 SMALL LUGS FOR KIT55S
 4 GROMMETS TO FIT LUGS ON KITS 34, 49, 50, 55L, 55S
 MOUNTING GROMMETS FOR 1/2" SLOT
 MOUNTING GROMMETS FOR 3/4" SLOT (WITH STEEL SLEEVE)

KIT 49
 KIT 150
 8684-6000
 8684-6008



LUG MOUNTING BRACKET

Stock No. 1410A

FOR 5 5/8" MOTOR DIAMETER.

TWO MOUNTING SLOTS ACCEPTS EITHER A 1/4" OR 3/4" MOUNTING BOLT.

CIRCLE MOUNTING DIAMETER RANGES FROM 6 3/8" TO 7 5/8".

3/4" HOLE FOR LARGE MOUNTING RUBBER.

1/4" SLOT FOR DIRECT MOUNTING SCREW.



ADAPT-A-LUG KITS (PATENT NO. 3,903,443)

Stock No. 1327A 1/4" SLOT

Stock No. 1328A 3/4" SLOT

SAVE INSTALLATION TIME. FITS DIRECTLY TO THE CASE ON ADAPT-A-LUG® MODELS. BOTH KITS PROVIDE FOR BOLT CIRCLES FROM 6 7/8"-8 1/8".



48 TO 56 FRAME ADAPTER

Stock No. 615467-001

3" BAND WIDTH.

Stock No. 615467-002

1 1/2" BAND WIDTH.

ADAPTER CONVERTS 5 1/2" DIAMETER AO SMITH FAN MOTORS TO 6 1/2" DIAMETER. THE ADAPTER CAN BE EASILY MOUNTED ON STANDARD, OFF-THE-SHELF 48 FRAME (5 1/2") FAN AND BLOWER MOTORS. THE MOTOR, WITH ADAPTER MOUNTED, CAN BE USED TO REPLACE MOST OLD STANDARD AND SPECIAL 56 FRAME (6 1/2") FAN MOTORS, ENGINEERED AND TESTED FOR MAXIMUM RELIABILITY AND VERSATILITY.



FAS MOUNT BRACKET KIT

Stock No. FM50

MOTOR DIAMETER 5.0".

BOLT CIRCLE 9" AND 10.18".

THESE KITS ARE DESIGNED FOR DIRECT DRIVE BLOWER MOTORS USING THE FLEXIBLE BRACKET MOUNTING ARRANGEMENT.

GROMMETS AND EYELETS ARE INCLUDED.



FAS MOUNT BRACKET KIT

Stock No. FM55

MOTOR DIAMETER 5.5".

BOLT CIRCLE 9" AND 10.18".

3 BRACKETS.

THESE KITS ARE DESIGNED FOR DIRECT DRIVE BLOWER MOTORS USING THE FLEXIBLE BRACKET MOUNTING ARRANGEMENT.

GROMMETS AND EYELETS ARE INCLUDED.



FAS MOUNT BRACKET KIT

Stock No. FM554

MOTOR DIAMETER 5.5".

BOLT CIRCLE 9" AND 10.18".

4 BRACKETS.

THESE KITS ARE DESIGNED FOR DIRECT DRIVE BLOWER MOTORS USING THE FLEXIBLE BRACKET MOUNTING ARRANGEMENT.

GROMMETS AND EYELETS ARE INCLUDED.



ROTOM FLEX MOUNT BRACKET KIT

Stock No. 92-A8555

MOTOR DIAMETER 5.5".

BOLT CIRCLE 9" AND 10.18".

3 BRACKETS.

THESE KITS ARE DESIGNED FOR DIRECT DRIVE BLOWER MOTORS USING THE FLEXIBLE BRACKET MOUNTING ARRANGEMENT.

GROMMETS AND EYELETS ARE INCLUDED.



ROTOM FLEX MOUNT BRACKET KIT

Stock No. 92-A8617

MOTOR DIAMETER 5.0" & 5.5".

BOLT CIRCLE 9" AND 10.18".

3 BRACKETS.

THESE KITS ARE DESIGNED FOR DIRECT DRIVE BLOWER MOTORS USING THE FLEXIBLE BRACKET MOUNTING ARRANGEMENT.

GROMMETS AND EYELETS ARE INCLUDED.



CONDUIT BOX

Stock No. KIT 142

BLACK BOX FOR 3.3" DIAMETER MOTORS.
PACKAGED ONE PER KIT.



CONDUIT BOX

Stock No. KIT 144

GREY, TIE-ROD MOUNTABLE BOX FOR 4.4", 5.0" AND 5.6" DIAMETER MOTORS.
PACKAGED ONE PER KIT.



CONDUIT KIT

Stock No. KIT 100

FOR 5/16" AND 3/8" GREENFIELD (FLEXIBLE CONDUIT).
PACKAGED TWO PER KIT.



CONDUIT KIT

Stock No. KIT 102

3/8" CONDUIT CONNECTOR ALLEN STEVENS TYPE,
COMPLETE WITH MOUNTING SCREWS.
PACKED THREE PER KIT.



CONDUIT FITTING

Stock No. 1202A

FOR 4 5/16" DIAMETER MOTORS.
PACKAGED ONE PER PACK.



INLET SCREENS

Stock No. INLET 4004

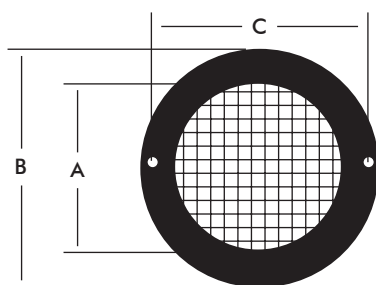
FOR AIR ROTORS OF LESS THAN 3 7/8" DIAMETER, INLET 4004 CAN BE USED ON THE FOLLOWING BLOWERS: 50746-D500, 50747-D230, 50747-D401, 50747-D500, 50747-D600, 50748-D500, 50748-D700, 50752-D230, 50752-D500, A069, A071, A073, A075, A081, A083, B23617 OR B23618.

PACKAGED ONE PER KIT.

Stock No. INLET 4000

FOR AIR ROTORS OF LESS THAN 4" TO 5 1/2" DIAMETER, INLET 4000 CAN BE USED ON THE FOLLOWING BLOWERS: 50755-D230, 50755-D500, 50756-D230, 50756-D500, 50757-D500, A159 OR A161.

PACKAGED ONE PER KIT.



4004
A=3.125
B=4.50
C=4.188

4000
A=4.72
B=6.125
C=5.75

FLANGES

Stock No. KIT 280

MEETING HOLE DIAMETER IS 0.281".

PACKAGED ONE PER KIT.

Stock No. KIT 282

MEETING HOLE DIAMETER IS 0.136".

PACKAGED ONE PER KIT.

Stock No. KIT 284

PACKAGED ONE PER KIT.



RHEEM MOUNTING CABLES

Stock No. KIT 325

1/6 HP, 3 1/4" LENGTH.

Stock No. KIT 350

1/4 HP, 3 1/2" LENGTH.

Stock No. KIT 378

1/3 HP, 3 1/8" LENGTH.



SPECIAL MOUNTING CABLES FOR RHEEM.

FOUR PER PACKAGE.

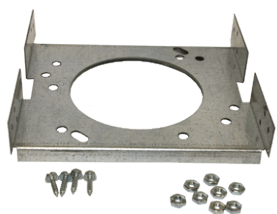
ADAPTER KIT

Stock No. KIT 380

MOUNTING KITS.

RHEEM MOUNTING ADAPTER PLATE.

PACKAGED ONE PER KIT.



ADAPTER KIT

Stock No. KIT 414

ADJUSTABLE CASEBOLT MOUNTING KIT.

FOUR BOLT ADAPTERS PER KIT.



ADAPTER KIT

Stock No. H33

SPECIAL MOUNTING KIT FOR 3.3" DIAMETER TO REPLACE MOTORS IN NU-TONE UNITS.

INCLUDES FOUR NUTS AND TWO HEX HUB BRACKETS.

USE KIT187 MOUNTING RINGS.



ADAPTER KIT

Stock No. KIT 199

MOUNTING KITS.

MOTOR LENGTH ADAPTER KIT.

PROVIDES MEANS TO BASE MOUNT FASCO 5" DIAMETER MOTORS.

TWO KITS NEEDED TO ADAPT BOTH ENDS OF MOTOR FOR BASE MOUNTING.



ADAPTER KIT

Stock No. KIT 200

MOUNTING KITS.

HOLES FOR 4.4" AND 5.6" DIAMETER MOTORS.

ONE KIT WILL ADAPT BOTH ENDS OF MOTOR FOR BASE MOUNTING.



ADAPTER KIT

Stock No. KIT 205

ADAPTER PLATES.

FRANKLIN REDMOND 4 1/8" DIAMETER MOUNTING ADAPTER PLATE.

PACKAGED ONE PER KIT.



ADAPTER KIT

Stock No. KIT 214

MOUNTING KITS.

SPECIAL END PLATE FOR 3.3" DIAMETER MOTOR.

PACKAGED ONE PER KIT.



END SHIELD KIT

Stock No. KIT 216

FOR 3.3" DIAMETER MOTORS.

SPECIAL END PLATE FOR 3.3" DIAMETER MOTORS FOR BASE MOUNTING.

USE WITH KIT 180 MOUNTING RINGS (SEE PAGE 43).

PACKAGED ONE PER KIT.



ADAPTER KIT

Stock No. KIT 218

MOUNTING KITS.

ALUMINUM STAND-OFF BRACKET FOR MOTOR-BLOWER MOUNTING.

MATCHES 3.3" MOUNTING PATTERN.

KIT 214 REQUIRED TO MOUNT TO MOTOR.

PACKAGED ONE PER KIT.



COOLING FAN KITS

Stock No. 92-FMK

CW ROTATION-OPPOSITE SHAFT END.

Stock No. 92-FMK1

CCW ROTATION-OPPOSITE SHAFT END.

FOR DRAFT BOOSTER MOTORS.

2" DIAMETER.

5/16" HUB ID WITH 1/4" ADAPTER.

SHIPPED ONE FAN PER KIT.



NEOPRENE GASKET

Stock No. 0912-0167

INCLUDES ONE GASKET AND FOUR GROMMETS.

3.3" DIAMETER MOTORS.

2.84" BOLT CIRCLE DIAMETER.



ADAPTER KIT

Stock No. KIT 207

ADAPTER PLATES.

PROVIDES RECTANGULAR MOUNTING STUD PATTERN ON 5.0" OR 5.6" DIAMETER FASCO MOTORS TO MATCH FEDDERS STUD MOTORS.

SIMILAR TO EMERSON AND RMR RECTANGULAR MOUNTING STUD PATTERN.

PACKAGED ONE PER KIT.



END SHIELD KIT

Stock No. KIT 265

MOUNTING CUP.

USED TO MOUNT 3.3" MOTORS TO SOME BLOWER HOUSINGS.

PACKAGED ONE PER KIT.



END SHIELD KIT

Stock No. KIT 225

TRIANGULAR BRACKET WITH GROMMETS FOR 3.3" DIAMETER MOTORS.

4.38" BCD.

PACKAGED ONE PER KIT.



STAKED TIE ROD NUTS

Stock No. KIT 832

8-32 NUTS.

Stock No. KIT 1032

10-32 NUTS.



PACKAGED 32 PIECES PER PACK.

STAKED TIE RODS

Stock No. KIT 220

8" LONG 8-32 NC FOR FASCO 5.6" DIAMETER MOTORS.

INCLUDES ONE STAKED NUT AND ONE REGULAR NUT.

Stock No. KIT 221

8" LONG 10-32 NC FOR FASCO 4.4" DIAMETER MOTORS.



PACKAGED FOUR PER KIT.

MOUNTING STUDS

Stock No. 2064A

8-32, 3/4" EXT., COLLAR STUDS FOR 3 3/8" DIAMETER MOTORS.

Stock No. 2087A

10-32, 1" EXT., COLLAR STUDS FOR 5" DIAMETER MOTORS.



THREADING LONGEST END INTO MOTOR CAN CREATE ELECTRICAL SHOCK OR FIRE HAZARDS, AND SHORTEN MOTOR LIFE.

EZ Telescopic Oiler

Stock No. 10-Z575

118 ML TELESCOPIC BOTTLE



PACKAGED 12 PER CARTON.

ANTI-WINDMILL BRAKES

Stock No. AW-1/2

1/2" BORE SIZE.

Stock No. AW-5/8

5/8" BORE SIZE.



USED TO STOP WIND-MILLING IN THE WRONG DIRECTION. SHAFT WILL ROTATE THE CORRECT DIRECTION FREELY.

EZ Rust Breaker

Stock No. 10-RB75

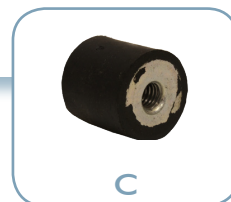
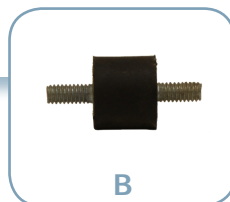
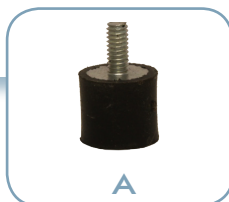
118 ML TELESCOPIC BOTTLE



PACKAGED 12 PER CARTON.

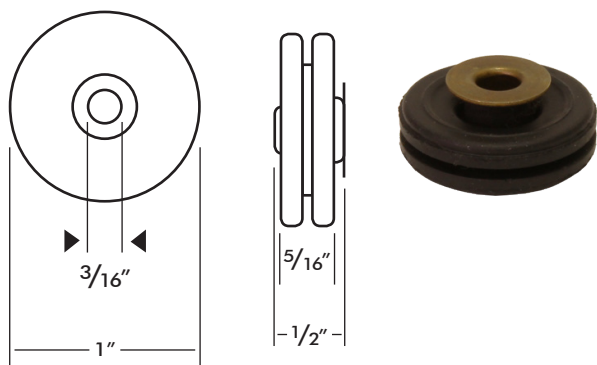
RUBBER MOUNTING GROMMETS

BODY DIAMETER	TYPE	BODY LENGTH	THREAD	THREAD LENGTH	FIGURE	STOCK NUMBER
9/16"	MALE/FEMALE	1/2"	8/32	3/8"	A	B177-0001
9/16"	MALE/MALE	1/2"	8/32	3/8"	B	B177-0002
9/16"	MALE/FEMALE	1/2"	10/32	3/8"	A	B177-0003
9/16"	MALE/MALE	1/2"	10/32	3/8"	B	B177-0004
1"	MALE/MALE	1/2"	1/4 x 20	1/2"	B	B177-0006
1"	MALE/MALE	1"	5/16 x 18	9/16"	B	B177-0007
1"	FEMALE/FEMALE	1"	5/16 x 18	---	C	B177-0008
1 1/4"	MALE/MALE	3/4"	5/16 x 18	5/8"	B	B177-0009
2"	MALE/MALE	3/4"	5/16 x 18	3/4"	B	B177-0010



SPECIAL CARRIER GROMMET

Stock No. B177-0011



SHAFT EXTENSION ASSEMBLY

Stock No. 1308A

1/4" SIZE, 4 1/2" LENGTH.

Stock No. 1310A

5/16" SIZE, 4 1/2" LENGTH.

Stock No. 1475A

1/2" SIZE, 4 1/2" LENGTH.



COUPLING COMES COMPLETE WITH SET SCREWS.
USE ANYWHERE AN EXTENSION IS DESIRED.

STEEL SHAFT ADAPTER BUSHINGS

INSIDE DIAMETER	OUTSIDE DIAMETER	QUANTITY	STOCK NUMBER
1/4"	5/16"	4	KIT 240
5/16"	3/8"	4	KIT 244
5/16"	1/2"	5	1304A
3/8"	7/16"	5	1305A
3/8"	1/2"	4	KIT 242
1/2"	5/8"	4	KIT 246
5/8"	3/4"	5	1483A

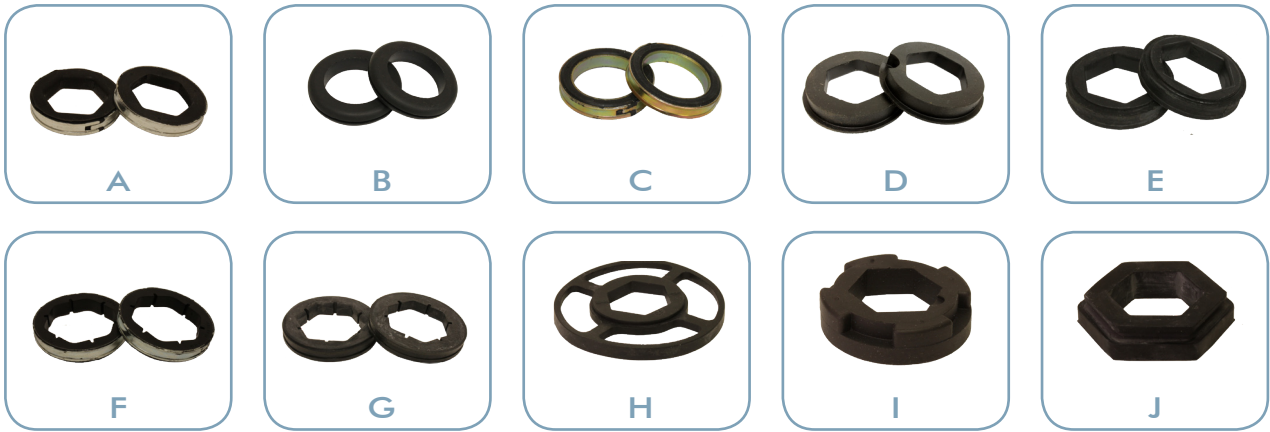


RUBBER MOUNTING RINGS

MOTOR DIAMETER				OUTSIDE RING DIAMETER	MATERIAL	BRAND	FIGURE	STOCK NUMBER
3.3"	4.4"	5.0"	5.6"					
x				1.75"	RUBBER/STEEL BAND	CENTURY	A	1255A
x				1.80"	RUBBER	FASCO	B	KIT 187*
x				1.80"	HENRITE	FASCO	C	KIT 180
x				1.875"	RUBBER WITH GASKET	NUTONE	H	19359
x				2.00"	RUBBER	BROAN	I	99-10-0412
x				2.125"	RUBBER	NUTONE	J	19360
x				2.25"	RUBBER	CENTURY	D	1263A
	x	x	x	2.25"	RUBBER/STEEL BAND	FASCO	A	KIT 183
	x	x	x	2.25"	RUBBER/STEEL BAND	CENTURY	F	1220A
	x	x	x	2.50"	RUBBER	FASCO	E	KIT 186
	x	x	x	2.50"	RUBBER	CENTURY	D	1219A
	x	x	x	2.50"	RUBBER/STEEL BAND	CENTURY	G	1182A
	x	x	x	2.50"	HENRITE	FASCO	E	KIT 184

NOTE

*Use with H33 in Broan and Nutone applications (page 40)

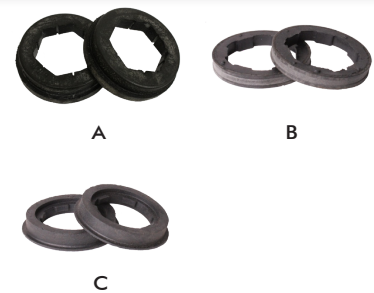


RESILIENT RINGS

FIGURE	OUTSIDE DIAMETER	INSIDE DIAMETER	STOCK NUMBER
A	2.50"	1.55"	619432-105*
B	2.25"	1.57"	619432-111
B	2.50"	1.57"	619432-112
C	2.50"	1.57"	619432-113

NOTE

*Trane/GE and others.



PACKAGED TWO PER PACK.

RAIN SHIELDS

Stock No. 8860-6016

PLASTIC 7" DIAMETER, 1/2" SHAFT DIAMETER BORE.

Stock No. 8860-6000

PLASTIC 7" DIAMETER, 5/8" SHAFT DIAMETER BORE.



Stock No. 2097A

PLASTIC 6" DIAMETER, 1/2" BORE, 42 FRAME.

Stock No. 1411A

DISHED PLASTIC 7" DIAMETER, 1/2" BORE, 48 FRAME.

Stock No. 1412A

DISHED PLASTIC 7" DIAMETER, 5/8" BORE, 48 FRAME.



WATER SLINGER

Stock No. 8865-6002

1/2" ID x 2" OD.

SHIPPED INDIVIDUALLY.



MODEL	PG	MODEL	PG	MODEL	PG	MODEL	PG	MODEL	PG
1205	35	130C	5	1VL30-1/2PD	15	25B	4	2MB40-5/8	17
1206	35	130D	6	1VL30-5/8PD	15	25C	5	2MB40-7/8	17
1207	35	130F	5	1VL34-1/2PD	15	25D	6	2MB45-1-1/8	17
1293	35	1310A	43	1VL34-3/4PD	15	25DV	7	2MB45-5/8	17
1342	35	1327A	36	1VL34-5/8PD	15	25DVR	7	2MB45-7/8	17
1343	35	1328A	36	1VL40-1/2PD	15	270B	4	2MB50-1-1/8	17
1419	35	135D	6	1VL40-3/4PD	15	270C	5	2MB50-5/8	17
1422	35	1379A	36	1VL40-5/8PD	15	270D	6	2MB50-7/8	17
2044	35	1410A	36	1VL40-7/8PD	15	270F	5	2MB55-1-1/8	17
2061	35	1411A	45	1VL44-1/2PD	15	275-B-5/8	19	2MB55-5/8	17
2062	35	1412A	45	1VL44-3/4PD	15	275-B-5/8	20	2MB55-7/8	17
2089	35	141-3/4	20	1VL44-5/8PD	15	2BK100H	18	2MB60-1-1/8	17
2090	35	141-5/8	20	1VL44-7/8PD	15	2BK25-1/2	17	2MB60-5/8	17
410010	21	143-1/2	20	1VM50-1/2PD	15	2BK25-5/8	17	2MB60-7/8	17
410030	21	143-5/8	20	1VM50-5/8PD	15	2BK25-7/8	17	2MB68-1-1/8	17
410050	21	144-1/2	20	1VM50-7/8PD	15	2BK28-1-1/8	17	2MB68-5/8	17
410070	21	144-3/4	20	20/15DV	8	2BK28-5/8	17	2MB78-1-1/8	17
418013	21	145-1/2	20	20/15DVR	8	2BK28-7/8	17	2MB78-5/8	17
418033	21	145B	4	20/5DV	8	2BK32H	18	2MB78-7/8	17
418053	21	145C	5	20/5DVR	8	2BK34H	18	2MB88-1-1/8	17
418073	21	145D	6	200-A-1/2	19	2BK36H	18	2MBL33	18
0012-0079	9	145F	5	200-A-3/4	19	2BK40-1-1/8	17	2MBL35	18
0912-0167	41	146-1/2	20	200-A-3/8	19	2BK40-5/8	17	2MBL37	18
1000B	4	146-5/8	20	200B	4	2BK40-7/8	17	2MBL39	18
1000F	5	1475A	43	2064A	42	2BK40H	18	2MBL42	18
100DVR	7	1483A	43	2087A	42	2BK45H	18	2MBL44	18
108B	4	148-5/8	20	2097A	45	2BK47-1-1/8	17	2MBL47	18
108C	5	149-1/2	20	20DV	7	2BK47-7/8	17	2MBL49	18
108D	6	15/10DV	8	20DVR	7	2BK47H	18	2MBL52	18
108F	5	15/10DVR	8	216B	4	2BK50H	18	2MBL54	18
10DV	7	15/3DV	8	216C	5	2BK52-1-1/8	17	2MBL57	18
10DVR	7	15/5DV	8	216D	6	2BK52-7/8	17	2MBL59	18
10-RB75	42	15/5DVR	8	216F	5	2BK52H	18	2MBL62	18
10-Z575	42	150-1/2	20	21C	5	2BK55H	18	2MBL64	18
110DVR	7	150-A-3/8	19	21D	6	2BK57-1-1/8	17	2MBL67	18
113-1/2	20	15DV	7	225-A-1/2	19	2BK57H	18	2MBL69	18
113-5/8	20	15DVR	7	225-A-3/8	19	2BK60H	18	2MBL77	18
1175B	4	161B	4	225-B-1/2	19	2BK62-1-1/8	17	2MBL87	18
1182A	44	161C	5	225-B-1/2	20	2BK62H	18	2MBL97	18
12.5DV	7	161C-5	5	225-B-5/8	19	2BK65H	18	30/4DVR	8
12.5DVR	7	161C-6	5	225-B-5/8	20	2BK67H	18	30/5DV	8
1200A	43	161D	6	233B	4	2BK70-1-1/8	17	30/5DVR	8
1202A	38	161F	5	233C	5	2BK70H	18	300-A-1/2	19
1219A	44	17.5DV	7	233F	5	2BK80-1-1/8	17	300-A-3/4	19
1220A	44	17.5DVR	7	243B	4	2BK80H	18	300-A-5/8	19
124B	4	175-A-1/2	19	243C	5	2BK90-1-1/8	17	300B	4
124C	5	175-A-3/4	19	243F	5	2BK90H	18	300-B-1/2	19
124D	6	175-A-3/8	19	25/10DV	8	2DV	7	300-B-1/2	20
124F	5	189B	4	25/10DVR	8	2MB25-1/2	17	30-354	35
1255A	44	189C	5	25/3DVR	8	2MB25-1-1/8	17	30-386	35
1263A	44	189D	6	25/4DVR	8	2MB25-5/8	17	30-408	35
1280B	4	189F	5	25/5DV	8	2MB25-7/8	17	30-435	35
1304A	43	19359	44	25/5DVR	8	2MB30-1-1/8	17	30-461	35
1305A	43	19360	44	25/7.5DVR	8	2MB30-5/8	17	30-479	35
1308A	43	1VL25-1/2PD	15	250-A-1/2	19	2MB30-7/8	17	30-492	35
130B	4	1VL25-5/8PD	15	250-A-3/8	19	2MB40-1-1/8	17	30-517	35

MODEL	PG	MODEL	PG	MODEL	PG	MODEL	PG	MODEL	PG
30-542	35	3L180	21	50/10DVR	8	80/5DVR	8	A45	22
30-558	35	3L190	21	50/5DVR	8	80DVR	7	A46	22
30-595	35	3L200	21	50/7.5DVR	8	81-0002-A	9	A47	22
30-705	35	3L210	21	500-A-1/2	19	81-0002-B	9	A48	22
30C	5	3L220	21	500-A-5/8	19	81-0002-C	9	A49	22
30D	6	3L230	21	50DV	7	810F	5	A50	22
30DV	7	3L240	21	50DVR	7	829B	4	A51	22
30DVR	7	3L250	21	50L	36	829B-5	4	A52	22
320C	5	3L260	21	53B	4	8582-6004	35	A53	22
324B	4	3L270	21	53C	5	8684-6000	36	A54	22
324B-4	4	3L280	21	53C-1	5	8684-6008	36	A55	22
325-A-1/2	19	3L290	21	53D	6	8725-6001	9	A56	22
325-A-5/8	19	3L300	21	540B	4	8860-6000	45	A57	22
325-B-1/2	19	3L310	21	540B-5	4	8860-6016	45	A58	22
325-B-1/2	20	3L320	21	540F	5	8865-6002	45	A59	22
325-B-5/8	19	3L330	21	55/10DVR	8	88B	4	A60	22
325-B-5/8	20	3L340	21	55/5DVR	8	88C	5	A61	22
33L	36	3L350	21	55/7.5DVR	8	88D	6	A62	22
340B	4	3L360	21	550-A-1/2	19	88F	5	A63	22
340F	5	40/10DVR	8	550-A-5/8	19	92-A8555	37	A64	22
35/10DVR	8	40/5DV	8	55DV	7	92-A8617	37	A65	22
35/4DVR	8	40/5DVR	8	55DVR	7	99-10-0412	44	A66	22
35/5DV	8	40/7.5DVR	8	55L	36	A13	22	A67	22
35/5DVR	8	400-A-1/2	19	55S	36	A14	22	A68	22
35/7.5DVR	8	400-A-5/8	19	590B	4	A15	22	A69	22
350-A-1/2	19	400B	4	5DV	7	A16	22	A70	22
350-A-5/8	19	400-B-1/2	19	5DVR	7	A17	22	A71	22
350-B-1/2	19	400-B-1/2	20	60/10DVR	8	A177-1001	29	A72	22
350-B-1/2	20	400B-2	4	60/5DVR	8	A177-1004	29	A73	22
350-B-5/8	19	400-B-5/8	19	60/7.5DVR	8	A18	22	A74	22
350-B-5/8	20	400-B-5/8	19	600-A-1/2	19	A19	22	A75	22
35-354	35	400-B-5/8	20	600-A-5/8	19	A20	22	A76	22
35-386	35	400-B-5/8	20	60DV	7	A21	22	A77	22
35-408	35	400C	5	60DVR	7	A22	22	A78	22
35-417	35	400F	5	615467-001	37	A23	22	A79	22
35-435	35	405010	21	615467-002	37	A24	22	A80	22
35-461	35	405050	21	619432-105	44	A25	22	A81	22
35-479	35	40DV	7	619432-111	44	A26	22	A82	22
35-492	35	40DVR	7	619432-112	44	A27	22	A83	22
35-517	35	418050-1	21	619432-113	44	A28	22	A84	22
35-542	35	430B	4	64B	4	A29	22	A85	22
35-558	35	430B-2	4	64C	5	A30	22	A86	22
35-595	35	43B	4	64C-1	5	A31	22	A87	22
35-705	35	43C	5	64D	6	A32	22	A88	22
35DV	7	43D	6	6DV	7	A33	22	A89	22
35DVR	7	45/4DVR	8	6DVR	7	A34	22	A90	22
36C	5	45/5DV	8	7.5DV	7	A35	22	A91	22
36D	6	45/5DVR	8	7.5DVR	7	A36	22	A92	22
378B	4	45/7.5DVR	8	708B	4	A37	22	A93	22
378F	5	450-A-1/2	19	708B-7	4	A38	22	A94	22
3DV	7	450-A-5/8	19	70DVR	7	A39	22	AAP1	9
3L130	21	45DV	7	710F	5	A40	22	AAP2	9
3L140	21	45DVR	7	72B	4	A41	22	AAP3	9
3L150	21	460B	4	72C	5	A42	22	ABP1	9
3L160	21	47C	5	72D	6	A43	22	ABP2	9
3L170	21	4DV	7	72F	5	A44	22	ABP3	9

MODEL	PG	MODEL	PG	MODEL	PG	MODEL	PG	MODEL	PG
AK17-1/2	11	AK74-5/8	12	B41	23	BK115H	16	BK50H	16
AK17-5/8	11	AL104-1	15	B42	23	BK120H	16	BK52-1/2	14
AK20-1/2	11	AL104-3/4	15	B43	23	BK130H	16	BK52-1-1/8	14
AK20-5/8	11	AL114-1	15	B44	23	BK140H	16	BK52-5/8	14
AK22-1/2	11	AL114-3/4	15	B45	23	BK150H	16	BK52-7/8	14
AK22-5/8	11	AL124-1	15	B46	23	BK160H	16	BK52H	16
AK23-1/2	11	AL124-3/4	15	B47	23	BK190H	16	BK55-1/2	14
AK23-5/8	11	AL54-1	15	B48	23	BK24-1/2	13	BK55-1-1/8	14
AK25-1/2	11	AL54-3/4	15	B49	23	BK24-5/8	13	BK55-5/8	14
AK25-5/8	11	AL54-5/8	15	B50	23	BK24-7/8	13	BK55-7/8	14
AK27-1/2	11	AL64-1	15	B51	23	BK25-1/2	13	BK55H	16
AK27-5/8	11	AL64-3/4	15	B52	23	BK25-5/8	13	BK57-1-1/8	14
AK28-1/2	11	AL64-5/8	15	B53	23	BK25-7/8	13	BK57-5/8	14
AK28-5/8	11	AL74-1	15	B54	23	BK26-1/2	13	BK57-7/8	14
AK30-1/2	11	AL74-3/4	15	B55	23	BK26-5/8	13	BK57H	16
AK30-5/8	11	AL74-5/8	15	B56	23	BK26-7/8	13	BK60-1/2	14
AK30-7/8	11	AL84-1	15	B57	23	BK27-1/2	13	BK60-1-1/8	14
AK32-1/2	11	AL84-3/4	15	B58	23	BK27-5/8	13	BK60-5/8	14
AK32-5/8	11	AL84-5/8	15	B59	23	BK27-7/8	13	BK60-7/8	14
AK32-7/8	11	AL94-1	15	B60	23	BK28-1/2	13	BK60H	16
AK34-1/2	11	AL94-3/4	15	B61	23	BK28-5/8	13	BK62-1/2	14
AK34-5/8	11	AM144-1	15	B62	23	BK28-7/8	13	BK62-1-1/8	14
AK34-7/8	11	AM144-3/4	15	B63	23	BK30-1/2	13	BK62-5/8	14
AK39-1/2	11	AW-1/2	42	B64	23	BK30-5/8	13	BK62-7/8	14
AK39-5/8	11	AW-5/8	42	B65	23	BK30-7/8	13	BK62H	16
AK39-7/8	11	B177-0001	43	B66	23	BK30H	16	BK65-1-1/8	14
AK41-1/2	11	B177-0002	43	B67	23	BK32-1/2	13	BK65-5/8	14
AK41-5/8	11	B177-0003	43	B68	23	BK32-5/8	13	BK65H	16
AK41-7/8	11	B177-0004	43	B69	23	BK32-7/8	13	BK67-1-1/8	14
AK44-1/2	11	B177-0006	43	B70	23	BK32H	16	BK67-5/8	14
AK44-5/8	11	B177-0007	43	B71	23	BK34-1/2	13	BK67-7/8	14
AK44-7/8	11	B177-0008	43	B72	23	BK34-5/8	13	BK67H	16
AK46-1/2	11	B177-0009	43	B73	23	BK34-7/8	13	BK70-1-1/8	14
AK46-5/8	11	B177-0010	43	B74	23	BK34H	16	BK70-5/8	14
AK46-7/8	11	B177-0011	43	B75	23	BK36-1/2	13	BK70-7/8	14
AK49-1/2	11	B20	23	B76	23	BK36-5/8	13	BK70H	16
AK49-5/8	11	B21	23	B77	23	BK36-7/8	13	BK72-1-1/8	14
AK49-7/8	11	B22	23	B78	23	BK36H	16	BK72H	16
AK51-1/2	11	B23	23	B79	23	BK40-1/2	13	BK75-1-1/8	14
AK51-5/8	11	B24	23	B80	23	BK40-5/8	13	BK75H	16
AK51-7/8	11	B25	23	B81	23	BK40-7/8	13	BK77H	16
AK54-1/2	11	B26	23	B82	23	BK40H	16	BK80-1-1/8	14
AK54-5/8	12	B27	23	B83	23	BK45-1/2	13	BK80-5/8	14
AK54-7/8	12	B28	23	B84	23	BK45-1-1/8	13	BK80-7/8	14
AK56-1/2	12	B29	23	B85	23	BK45-5/8	13	BK80H	16
AK56-5/8	12	B30	23	B86	23	BK45-7/8	13	BK85H	16
AK56-7/8	12	B31	23	B87	23	BK45H	16	BK90H	16
AK59-1/2	12	B32	23	B88	23	BK47-1/2	13	BK95H	16
AK59-5/8	12	B33	23	B89	23	BK47-1-1/8	13	BP1	9
AK59-7/8	12	B34	23	B90	23	BK47-5/8	13	BP2	9
AK61-1/2	12	B35	23	B91	23	BK47-7/8	13	BP3	9
AK61-5/8	12	B36	23	B92	23	BK47H	16	CAP1500P	10
AK61-7/8	12	B37	23	B93	23	BK50-1/2	13	CSH-1	33
AK66-5/8	12	B38	23	BK100H	16	BK50-1-1/8	13	CSH-1-20	33
AK71-5/8	12	B39	23	BK105H	16	BK50-5/8	13	CSH-2	33
AK74-1/2	12	B40	23	BK110H	16	BK50-7/8	13	CSH-2-20	33

MODEL	PG	MODEL	PG	MODEL	PG	MODEL	PG	MODEL	PG
DP-1P30A120	32	H240C	30	KBVF-26D	28	MA15-5/8	11	MA58-7/8	12
DP-1P30A24	32	H-3/4	18	KIT 100	38	MA18-1/2	11	MA60-1/2	12
DP-1P30A240	32	H33	40	KIT 102	38	MA18-5/8	11	MA60-5/8	12
DP-2P30A120	32	H330A	30	KIT 1032	42	MA20-1/2	11	MA60-7/8	12
DP-2P30A24	32	H330B	30	KIT 142	38	MA20-5/8	11	MA65-1/2	12
DP-2P30A240	32	H330C	30	KIT 144	38	MA20-7/8	11	MA65-5/8	12
DP-2P40A120	32	H340A	30	KIT 150	36	MA22-1/2	11	MA65-7/8	12
DP-2P40A24	32	H340B	30	KIT 180	44	MA22-5/8	11	MA70-1/2	12
DP-2P40A240	32	H340C	30	KIT 183	44	MA22-7/8	11	MA70-5/8	12
DP-3P30A120	32	H350A	30	KIT 184	44	MA23-1/2	11	MA70-7/8	12
DP-3P30A24	32	H350B	30	KIT 186	44	MA23-5/8	11	MA73-1/2	12
DP-3P30A240	32	H350C	30	KIT 187	44	MA23-7/8	11	MA73-5/8	12
DP-3P40A120	32	H360A	30	KIT 199	40	MA25-1/2	11	MA73-7/8	12
DP-3P40A24	32	H360B	30	KIT 200	40	MA25-5/8	11	MA80-1/2	12
DP-3P40A240	32	H360C	30	KIT 205	40	MA25-7/8	11	MA80-5/8	12
DP-3P50A120	32	H375AC	30	KIT 207	41	MA27-1/2	11	MA80-7/8	12
DP-3P50A24	32	H375BC	30	KIT 214	40	MA27-5/8	11	MB20-1/2	13
DP-3P50A240	32	H375CC	30	KIT 216	40	MA27-7/8	11	MB20-5/8	13
DP-3P60A120	32	H390AC	30	KIT 218	41	MA28-1/2	11	MB23-1/2	13
DP-3P60A24	32	H390BC	30	KIT 220	42	MA28-5/8	11	MB23-5/8	13
DP-3P60A240	32	H390CC	30	KIT 221	42	MA28-7/8	11	MB23-7/8	13
DP-4P30A120	32	H3R30A	31	KIT 225	41	MA30-1/2	11	MB24-1/2	13
DP-4P30A24	32	H3R30B	31	KIT 240	43	MA30-5/8	11	MB24-5/8	13
DP-4P30A240	32	H3R30C	31	KIT 242	43	MA30-7/8	11	MB24-7/8	13
DP-4P40A120	32	H430A	30	KIT 244	43	MA33-1/2	11	MB25-1/2	13
DP-4P40A24	32	H430B	30	KIT 246	43	MA33-5/8	11	MB25-5/8	13
DP-4P40A240	32	H430C	30	KIT 265	41	MA33-7/8	11	MB25-7/8	13
DP-AS7	32	H440A	30	KIT 280	39	MA35-1/2	11	MB26-1/2	13
DP-AS8	32	H440B	30	KIT 282	39	MA35-5/8	11	MB26-5/8	13
FCA-12	33	H440C	30	KIT 284	39	MA35-7/8	11	MB26-7/8	13
FK100	41	H-5/8	18	KIT 315	36	MA38-1/2	11	MB28-1/2	13
FK101	41	H6S	31	KIT 317	36	MA38-5/8	11	MB28-5/8	13
FM50	37	H-7/8	18	KIT 325	39	MA38-7/8	11	MB28-7/8	13
FM55	37	H7S	31	KIT 34	36	MA40-1/2	11	MB30-1/2	13
FM554	37	H-9/16	18	KIT 350	39	MA40-5/8	11	MB30-5/8	13
H-1	18	H9S	31	KIT 378	39	MA40-7/8	11	MB30-7/8	13
H-1/2	18	INLET 4000	39	KIT 380	39	MA43-1/2	11	MB31-1/2	13
H-1-1/16	18	INLET 4004	39	KIT 414	39	MA43-5/8	11	MB31-5/8	13
H-1-1/2	18	K105C	6	KIT 49	36	MA43-7/8	11	MB31-7/8	13
H-1-1/4	18	K177-1002	29	KIT 50	36	MA45-1/2	11	MB33-1/2	13
H-1-1/8	18	K177-1005	29	KIT 832	42	MA45-5/8	11	MB33-5/8	13
H-1-3/16	18	K177-1006	29	L-1	18	MA45-7/8	11	MB33-7/8	13
H-1-3/8	18	K177-1008	29	L-1/2	18	MA48-1/2	11	MB34-1/2	13
H130A	30	K177-1010	29	L-1-1/16	18	MA48-5/8	11	MB34-5/8	13
H130B	30	K177-1015	29	L-1-1/2	18	MA48-7/8	11	MB34-7/8	13
H130C	30	K177-2002	29	L-1-1/4	18	MA50-1/2	11	MB35-1/2	13
H140A	30	K177-2005	29	L-1-1/8	18	MA50-5/8	11	MB35-5/8	13
H140B	30	K177-2008	29	L-1-3/16	18	MA50-7/8	11	MB35-7/8	13
H140C	30	K177-2010	29	L-1-3/8	18	MA53-1/2	11	MB38-1/2	13
H-1-5/16	18	K177-2706	29	L-1-5/16	18	MA53-5/8	12	MB38-5/8	13
H-1-7/16	18	K177-2715	29	L-1-7/16	18	MA53-7/8	12	MB38-7/8	13
H230A	30	K250B	6	L-3/4	18	MA55-1/2	12	MB40-1/2	13
H230B	30	K59C	6	L-5/8	18	MA55-5/8	12	MB40-5/8	13
H230C	30	KBMA-24D	28	L-7/8	18	MA55-7/8	12	MB40-7/8	13
H240A	30	KBVF-23D	28	L-9/16	18	MA58-1/2	12	MB43-1/2	13
H240B	30	KBVF-24D	28	MA15-1/2	11	MA58-5/8	12	MB43-1-1/8	13

MODEL	PG	MODEL	PG	MODEL	PG	MODEL	PG	MODEL	PG
MB43-5/8	13	MBL107	16	MODEL A-R3	25	PRT-10	26		
MB43-7/8	13	MBL112	16	MODEL B	24	PRT-15	26		
MB45-1/2	13	MBL117	16	MODEL B-I	26	PRT-2	26		
MB45-1-1/8	13	MBL127	16	MODEL B-R3	25	PRT-20	26		
MB45-5/8	13	MBL137	16	MODEL C	24	PRT-25	26		
MB45-7/8	13	MBL147	16	MODEL C-I	26	PRT-3	26		
MB48-1/2	13	MBL157	16	MODEL C-R3	25	PRT-30	26		
MB48-1-1/8	13	MBL187	16	MODEL D	24	PRT-40	26		
MB48-5/8	13	MBL31	16	MODEL D-I	26	PRT-5	26		
MB48-7/8	13	MBL33	16	MODEL D-R3	25	PRT-50	26		
MB50-1/2	14	MBL35	16	MODEL E	24	PRT-60	26		
MB50-1-1/8	14	MBL37	16	MODEL E-I	26	PRT-7.5	26		
MB50-5/8	14	MBL39	16	MODEL E-R3	25	PRT-75	26		
MB50-7/8	14	MBL42	16	MODEL H	24	RT-1	27		
MB53-1/2	14	MBL44	16	MODEL H-I	26	RT-1.5	27		
MB53-1-1/8	14	MBL47	16	MODEL H-R3	25	RT-10	27		
MB53-5/8	14	MBL49	16	MODEL K	24	RT-15	27		
MB53-7/8	14	MBL52	16	MODEL K-I	26	RT-2	27		
MB55-1/2	14	MBL54	16	MODEL K-R3	25	RT-20	27		
MB55-1-1/8	14	MBL57	16	MODEL N-I	26	RT-25	27		
MB55-5/8	14	MBL59	16	MODEL N-R3	25	RT-3	27		
MB55-7/8	14	MBL62	16	MUNICAP200	10	RT-30	27		
MB58-1/2	14	MBL64	16	MVL25-1/2	15	RT-40	27		
MB58-1-1/8	14	MBL67	16	MVL25-5/8	15	RT-5	27		
MB58-5/8	14	MBL69	16	MVL30-1/2	15	RT-50	27		
MB58-7/8	14	MBL72	16	MVL30-5/8	15	RT-60	27		
MB60-1/2	14	MBL74	16	MVL34-1/2	15	RT-7.5	27		
MB60-1-1/8	14	MBL77	16	MVL34-3/4	15	RT-75	27		
MB60-5/8	14	MBL82	16	MVL34-5/8	15	WA9-04	33		
MB60-7/8	14	MBL87	16	MVL40-1/2	15				
MB63-1/2	14	MBL92	16	MVL40-3/4	15				
MB63-1-1/8	14	MBL97	16	MVL40-5/8	15				
MB63-5/8	14	MFAL104-1	15	MVL40-7/8	15				
MB63-7/8	14	MFAL104-3/4	15	MVL44-1/2	15				
MB65-1-1/8	14	MFAL114-1	15	MVL44-3/4	15				
MB65-5/8	14	MFAL114-3/4	15	MVL44-5/8	15				
MB65-7/8	14	MFAL124-1	15	MVL44-7/8	15				
MB68-1-1/8	14	MFAL124-3/4	15	PEM2921	9				
MB68-5/8	14	MFAL54-1	15	PR-1	25				
MB68-7/8	14	MFAL54-3/4	15	PR-1.5	25				
MB70-1/2	14	MFAL54-5/8	15	PR-1/2	25				
MB70-1-1/8	14	MFAL64-1	15	PR-1/3	25				
MB70-5/8	14	MFAL64-3/4	15	PR-1/4	25				
MB70-7/8	14	MFAL64-5/8	15	PR-10	25				
MB73-1/2	14	MFAL74-1	15	PR-1SS	25				
MB73-1-1/8	14	MFAL74-3/4	15	PR-2	25				
MB73-7/8	14	MFAL74-5/8	15	PR-2SS	25				
MB78-1/2	14	MFAL84-1	15	PR-3	25				
MB78-1-1/8	14	MFAL84-3/4	15	PR-3/4	25				
MB78-5/8	14	MFAL84-5/8	15	PR-3SS	25				
MB78-7/8	14	MFAL94-1	15	PR-5	25				
MB80-1/2	14	MFAL94-3/4	15	PR-5SS	25				
MB80-1-1/8	14	MFAM144-1	15	PR-7.5	25				
MB80-5/8	14	MFAM144-3/4	15	PRPC-20	29				
MB80-7/8	14	MODEL A	24	PRT-1	26				
MBL102	16	MODEL A-I	26	PRT-1.5	26				

WAREHOUSE LOCATIONS

CALIFORNIA	MAINE	NORTH CAROLINA
CONNECTICUT	MARYLAND	TENNESSEE
FLORIDA	MICHIGAN	TEXAS
ILLINOIS	MISSOURI	WISCONSIN

PEMS
PRECISION ELECTRIC
MOTOR SALES



WWW.PEMSMOTORS.COM

PRECISION ELECTRIC MOTOR SALES • OWOSSO, MICHIGAN • P: 800.234.5687 F: 888.234.5687