

Sale CATALOG

506



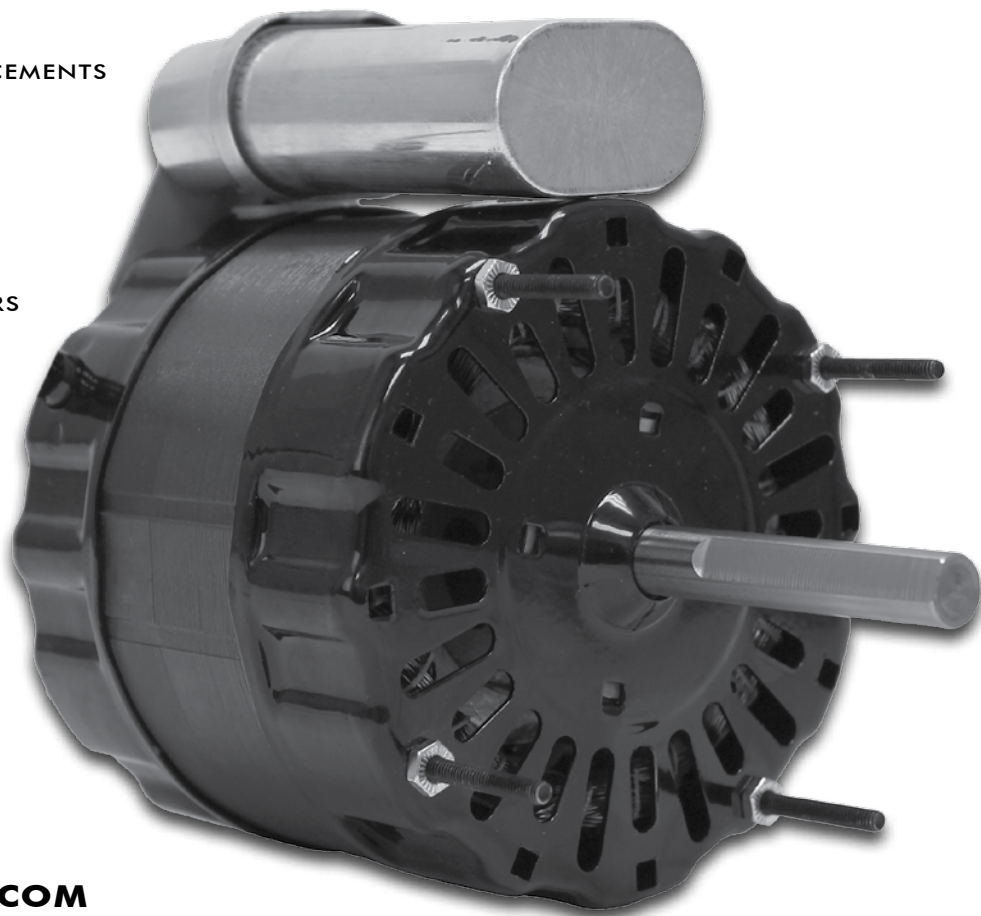
DIRECT DRIVE • BELT DRIVE • UNIT HEATER • HOT WATER CIRCULATOR • CONDENSER FAN
3 PHASE CONDENSER • REFRIGERATION • CAPACITOR START • 56 FRAMES 4-IN-1 • FARM DUTY
OEM REPLACEMENTS • CAPACITORS & CONTACTORS • ACCESSORIES • ECONOMASTER®

INDEX

- 4** DIRECT DRIVE BLOWER MOTORS
- 9** BELT DRIVE BLOWER MOTORS
- 10** UNIT HEATER MOTORS
- 11** HOT WATER CIRCULATORS
- 14** CONDENSER FAN MOTORS
- 18** 3 PHASE CONDENSER FAN MOTORS
- 19** ECONOMASTER® MOTORS
- 22** REFRIGERATION MOTORS
- 24** FARM DUTY MOTORS
- 26** 56 FRAME GENERAL REPLACEMENTS
- 27** CAPACITOR START MOTORS
- 28** MISCELLANEOUS
- 30** OEM REPLACEMENT MOTORS
- 38** ACCESSORIES

NEW PRODUCT
see page 34 for details...

P4094



WWW.PEMSMOTORS.COM

P: 800.234.5687 F: 888.234.5687

DIRECT DRIVE BLOWERS

5", SHADED POLE

sleeve bearing, open construction



385

HP	RPM/SPEED	AMPS	SHAFT DIMENSION	BRAND	MODEL
115 VOLTS					
1/15-1/30	1050/2	3.0-1.4	1/2" x 2 3/8"	CENTURY	96
1/8-1/11	1050/2	4.5-3.4	1/2" x 4"	FASCO	D178
1/8-1/10	1050/2	4.8-3.3	1/2" x 4 1/2"	CENTURY	346
1/6	1050/1	6.6	1/2" x 3 7/8"	FASCO	D156
1/6	1050/1	7.0	1/2" x 3 3/4"	CENTURY	345
1/6-1/9	1050/2	7.2-3.8	1/2" x 3 1/2"	FASCO	D166
1/5-1/8	1050/2	6.8-4.2	1/2" x 3 7/8"	CENTURY	684
1/6, 1/8, 1/10, 1/12	1050/4	6.5-4.8-4.3-3.9	1/2" x 4 1/2"	FASCO	D164
1/5-1/6-1/8	1050/3	6.8-5.3-4.2	1/2" x 3 7/8"	CENTURY	385
1/5-1/6-1/7	1050/3	6.7-5.3-4.7	1/2" x 4 1/8"	FASCO	D158
1/5, 1/7, 1/9, 1/12	1050/4	7.9-5.8-4.3-3.5	1/2" x 4"	CENTURY	559

5", PSC

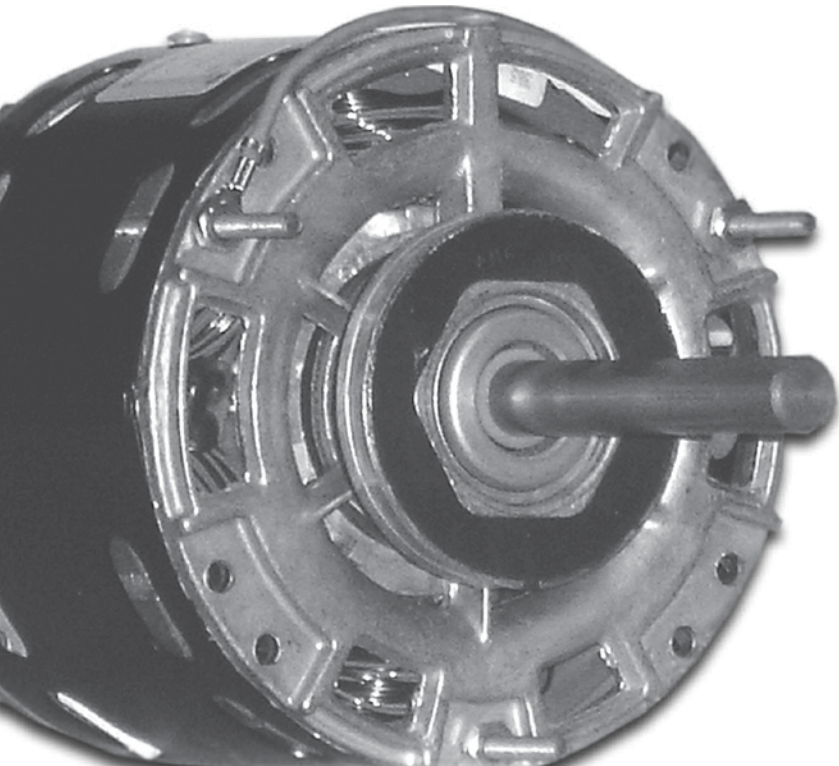
sleeve bearing, open construction, reversing plug



BL6505

HP	RPM/SPEED	AMPS	SHAFT DIMENSION	CAPACITOR	BRAND	MODEL
115 VOLTS						
1/5-1/8-1/10	1075/3	3.2-2.1-1.7	1/2" x 5 1/2"	7.5DV	CENTURY	BL6505
1/4-1/5-1/7	1075/3	3.6-2.9-2.3	1/2" x 6"	7.5DV	CENTURY	390
1/4-1/5-1/6	1050/3	2.8	1/2" x 5"	7.5DV	US	1390
1/4-1/5-1/6	1050/3	4.7-3.5-2.7	1/2" x 6"	5DV	FASCO	D150
230 VOLTS						
1/5-1/8-1/10	1075/3	1.3-0.9-0.7	1/2" x 5 1/2"	7.5DV	CENTURY	B6507*
1/4-1/5-1/7	1075/3	1.5-1.2-1.0	1/2" x 6"	7.5DV	CENTURY	391
1/4-1/5-1/6	1050/3	1.5	1/2" x 5"	7.5DV	US	1391
1/4-1/5-1/6	1050/3	2.0-1.4-1.1	1/2" x 6"	5DV	FASCO	D151

*208-230V



5 5/8", 1075 RPM

sleeve bearing, reversing plug, PSC

HP	SPEED	AMPS	SHAFT DIMENSION	CAPACITOR	BRAND	MODEL
115 VOLTS						
1/6	3	2.5	1/2" x 6 1/2"	7.5DV	CENTURY	FDL1016
1/4	3	3.5	1/2" x 4 1/2"	5DV	CENTURY	DL1026
1/4	3	4.8	1/2" x 6"	5DV	FASCO	D721
1/3	3	4.9	1/2" x 4 1/2"	7.5DV	CENTURY	DL1036
1/3	3	5.9	1/2" x 6"	5DV	FASCO	D727
1/2	3	6.5	1/2" x 4 1/2"	10DV	CENTURY	DL1056
1/2	4	7.7	1/2" x 5 1/2"	10DV	FASCO	D701
3/4	3	8.9	1/2" x 4 1/2"	15DV	CENTURY	DL1076
3/4	3	10.5	1/2" x 6"	10DV	FASCO	D728
1	3	12.3	1/2" x 6 1/2"	20DV	CENTURY	BDL1106
208-230 VOLTS						
1/4	3	1.8	1/2" x 4 1/2"	5DV	CENTURY	D1026
1/4	3	2.2	1/2" x 6"	5DV	FASCO	D725
1/3	3	2.6	1/2" x 4 1/2"	5DV	CENTURY	D1036
1/3	3	2.9	1/2" x 6"	5DV	FASCO	D923
1/2	3	3.2	1/2" x 4 1/2"	7.5DV	CENTURY	D1056
1/2	3	4.0	1/2" x 6"	7.5DV	FASCO	D703
3/4	3	4.0	1/2" x 4 1/2"	10DV	CENTURY	D1076
3/4	3	5.4	1/2" x 6"	10DV	FASCO	D729
1	3	5.1	1/2" x 4 1/2"	20DV	CENTURY	BD1106
460 VOLTS						
1/3	2	1.0	1/2" x 6"	7.5DV	MARATHON	X037*
1/2	2	1.6	1/2" x 6"	10DV	MARATHON	X038*
3/4	2	2.1	1/2" x 6"	15DV	MARATHON	X039*



DL1036

*ball bearing, enclosed frame and open end brackets

5 5/8", 1075 RPM, FLEX MOUNT

sleeve bearing, reversing plug, PSC

HP	SPEED	AMPS	SHAFT DIMENSION	CAPACITOR	BRAND	MODEL
115 VOLTS						
1/4	3	3.5	1/2" x 6"	7.5DV	CENTURY	FML1026
1/3	3	6.0	1/2" x 6"	10DV	CENTURY	FML1036
1/2	3	8.0	1/2" x 6"	10DV	CENTURY	FML1056
1/2	3	7.7	1/2" x 6"	10DV	FASCO	D1732
3/4	3	10.9	1/2" x 6"	15DV	CENTURY	FML1076
208-230 VOLTS						
1/4	3	1.4	1/2" x 6"	5DV	CENTURY	FM1026
1/4	3	2.2	1/2" x 6"	5DV	FASCO	D1733
1/3	3	2.7	1/2" x 6"	7.5DV	CENTURY	FM1036
1/3	3	2.8	1/2" x 6"	5DV	FASCO	D1734
1/2	3	3.4	1/2" x 6"	10DV	CENTURY	FM1056
1/2	3	3.4	1/2" x 6"	5DV	FASCO	D1735
3/4	3	4.9	1/2" x 6"	10DV	CENTURY	FM1076



FM1026

DIRECT DRIVE BLOWERS

5 5/8", 1625 RPM

sleeve bearing, reversing plug, PSC



FDL1034

HP	RPM/SPEED	AMPS	SHAFT DIMENSION	CAPACITOR	BRAND	MODEL
115 VOLTS						
1/4	1625/3	3.0	1/2" x 6 1/2"	10DV	CENTURY	FDL1024
1/3	1625/3	4.0	1/2" x 6 1/2"	15DV	CENTURY	FDL1034
1/2	1625/3	7.6	1/2" x 6 1/2"	15DV	CENTURY	FDL1054
3/4	1625/3	8.4	1/2" x 6 1/2"	15DV	CENTURY	FDL1074
208-230 VOLTS						
1/4	1625/3	1.8	1/2" x 6 1/2"	5DV	CENTURY	FD1024
1/4	1625/1	1.5	1/2" x 6"	5DV	FASCO	D783
1/3	1625/3	2.0	1/2" x 6 1/2"	5DV	CENTURY	FD1034
1/3	1625/1	1.9	1/2" x 6"	5DV	CENTURY	665A
1/2	1625/3	2.8	1/2" x 6 1/2"	7.5DV	CENTURY	FD1054
1/2	1625/1	3.9	1/2" x 6"	5DV	GENTEQ	3D010
1/2	1625/3	3.8	1/2" x 6"	5DV	FASCO	D784
3/4	1625/3	4.0	1/2" x 6 1/2"	7.5DV	CENTURY	FD1074
3/4	1625/1	5.2	1/2" x 6"	7.5DV	FASCO	D789
3/4	1625/3	5.3	1/2" x 6"	7.5DV	FASCO	D786

5 5/8", MULTIPLE HP MOTORS

sleeve bearing, reversing plug, PSC



D2835

HP	RPM/SPEED	AMPS	SHAFT DIMENSION	CAPACITOR	BRAND	MODEL
115 VOLTS						
1/2, 1/3, 1/4, 1/5, 1/6	1075/1	7.0	1/2" x 5"	10DV, 7.5DV	CENTURY	FDL6001
1/2, 1/3, 1/4, 1/5, 1/6	1075/1	7.3	1/2" x 3 3/4"	10DV, 5DV	FASCO	D2835
3/4, 1/2, 1/3, 1/4, 1/5	1075/1	9.1	1/2" x 5"	7.5DV, 10DV	CENTURY	FDL6002
3/4, 1/2, 1/3, 1/4, 1/5	1075/1	8.1	1/2" x 5"	20DV, 10DV	FASCO	D2832
208-230 VOLTS						
1/2, 1/3, 1/4, 1/5, 1/6	1075/1	3.9	1/2" x 5"	10DV, 7.5DV	CENTURY	FD6000
1/2, 1/3, 1/4, 1/5, 1/6	1075/1	3.6	1/2" x 4 1/2"	10DV, 5DV	FASCO	D833
3/4, 1/2, 1/3, 1/4, 1/5	1075/1	4.0	1/2" x 5"	7.5DV, 10DV	CENTURY	FD6001
3/4, 1/2, 1/3, 1/4, 1/5	1075/1	3.8	1/2" x 5 1/2"	20DV, 10DV	FASCO	D2833

5 5/8", DOUBLE SHAFT BLOWER MOTORS (1075 RPM, 3 SPEED)

sleeve bearing, PSC

HP	AMPS	SHAFT DIMENSION	BODY LENGTH	CAPACITOR	BRAND	MODEL
115 VOLTS						
1/8	2.0	7 1/2" x 1/2" x 9"	3 1/2"	5DV	CENTURY	RA1006
1/6	2.2	9" x 1/2" x 7 1/2"	3 7/8"	5DV	CENTURY	RA1016*
1/4	3.4	7 3/4" x 1/2" x 8"	4 1/4"	5DV	CENTURY	RA1026*
1/3	6.9	8 1/2" x 1/2" x 8 1/2"	4 1/2"	5DV	FASCO	D757
1/3	5.0	6 3/4" x 1/2" x 7"	4 7/8"	5DV	CENTURY	RA1036*
1/2	7.3	8" x 1/2" x 8"	5 1/4"	5DV	CENTURY	594
1/2	5.2	7 1/4" x 1/2" x 7 1/4"	5 3/8"	10DV	CENTURY	RA1056*
3/4	12.6	8" x 1/2" x 8"	5 1/2"	10DV	CENTURY	9600A
3/4	8.2	7 1/4" x 1/2" x 7 1/4"	5 3/8"	15DV	CENTURY	RA1076*
208-230 VOLTS						
1/8	0.75	7 1/2" x 1/2" x 9"	3 3/4"	5DV	CENTURY	RA1006
1/6	1.4	7 1/2" x 1/2" x 9"	3 1/2"	5DV	FASCO	D752
1/6	0.96	8 1/4" x 1/2" x 8"	3 3/4"	5DV	CENTURY	RA1016*
1/4	2.0	7 1/2" x 1/2" x 8 1/2"	4"	5DV	FASCO	D755
1/4	1.5	10" x 1/2" x 10"	4 1/8"	5DV	CENTURY	RA1026*
1/3	2.3	8 1/2" x 1/2" x 8 1/2"	4 1/2"	5DV	FASCO	D758
1/3	1.9	6 3/4" x 1/2" x 7"	4 5/8"	5DV	CENTURY	RA1036*
1/2	4.3	8" x 1/2" x 8"	5 1/4"	5DV	FASCO	D760
1/2	2.7	8" x 1/2" x 8"	5 1/8"	10DV	CENTURY	RA1056*
3/4	5.7	8" x 1/2" x 8"	5 1/2"	7.5DV	FASCO	D763
3/4	3.6	7" x 1/2" x 7 1/4"	5 3/8"	7.5DV	CENTURY	RA1076*



RA1016

*with hub adapter kit

EVERGREEN ECM RETROFIT FOR PSC DIRECT DRIVE BLOWER MOTORS

5 5/8" diameter

HP	VOLTS	RPM	AMPS	SHAFT	BODY LENGTH	MODEL
1/2, 1/3, 1/4, 1/5	115/230	1075	6.7/4.0	1/2" x 5"	6 1/4"	6005
1, 3/4	115/230	1075	11.0/6.7	1/2" x 5"	7 3/4"	6010



6005

The Evergreen ECM motor is 80% efficient compared to the 59% efficiency of a PSC motor...

EVERGREEN CONSUMER BENEFITS

system Example: 90,000 BTU Furnace with 3 Ton A/C

MODE	PSC	EVERGREEN	WATT SAVINGS	ANNUAL SAVINGS AT \$0.10 KWH
Cooling	580W	490W	90W	\$60
Heating	450W	305W	145W	
Fan	450W	86W	364W	

Note: These Evergreen ECM motors are specifically designed to replace PSC motors, and should not be used to replace variable speed ECM or X13 ECM motors.

HVAC SYSTEM

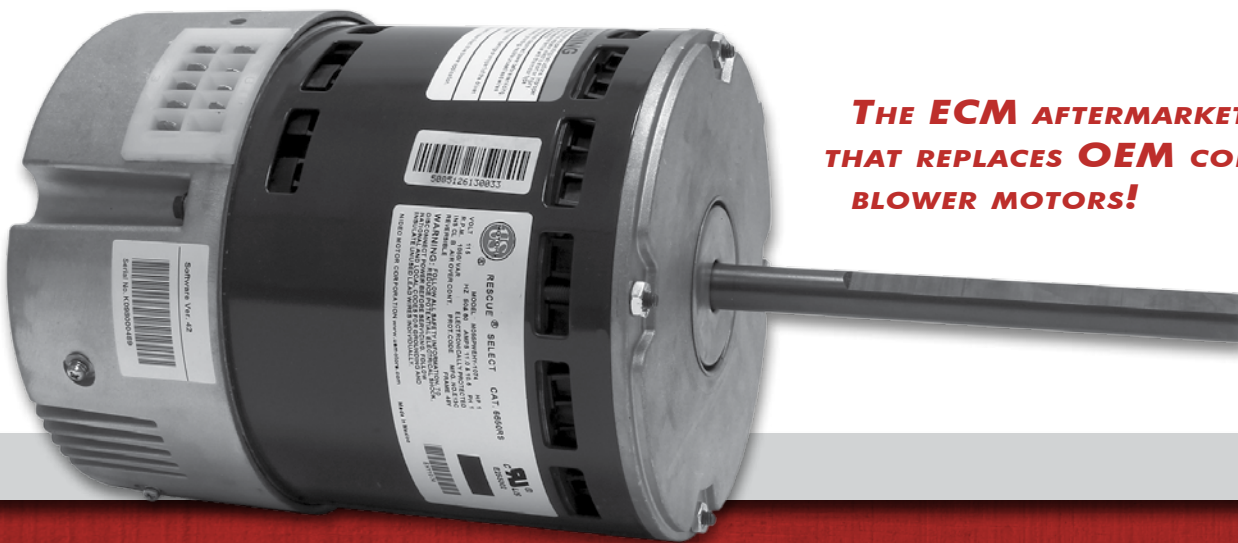
1/5-1/2 Hp 1.5-3 Ton 40-95k BTUH	Model 6005	3/4-1 Hp 3.5-5 Ton 100-150k BTUH	Model 6010
--	------------	--	------------

The Evergreen IM will automatically configure itself to the proper rotation of any HVAC system using patent pending Rotation Sensing Technology.

The Evergreen motor makes constant fan mode (running the fan between heating and cooling cycles) more affordable than ever. Constant fan mode filters indoor air, removing dust, pollen and other allergens. It also keeps you comfortable by circulating air to produce a more even temperature throughout your home.

**FINALLY AN
AFTERMARKET ECM BLOWER MOTOR
IS AVAILABLE THAT CAN BE PROGRAMMED TO EXACT
OEM SPECIFICATIONS!**

Simply supply PEMS with the original equipment motor part number and your programmed RESCUE® Select™ motor will ship the same day. Current stocking/programming PEMS locations are Owosso MI, South Windsor CT, Garland TX, Charlotte NC, and Independence MO.



**THE ECM AFTERMARKET MOTOR
THAT REPLACES OEM CONSTANT TORQUE
BLOWER MOTORS!**

RESCUE® SELECT™ MOTORS

OEM REPLACEMENT FOR ECM FURNACES AND AIR HANDLERS

PRODUCT OVERVIEW

- Replaces X13® and SelecTech® constant torque ECM motors.
- Patented high efficiency design with smooth, quiet start up.
- Wired to the OEM equipment using the equipment's existing connections, for ease of installation.
- Can be mounted using OEM belly band mounting system. Kits available for mounting adaptation for flex and rigid mounting systems.

FEATURES & BENEFITS

- Direct OEM replacement-programmed torque values set to match OEM performance.
- 6000V surge protection-more than double the protection of many OEM motors.
- Fully potted electric module for superior moisture protection.
- Motor and module technology creates smooth, quiet speed changes.
- 2 year warranty from date of installation provides homeowner assurance.

1/3, 1/2, 3/4, 1 HP ● 115V or 208-230V ● 600-1200 RPM
Up to 5 speeds based on OEM control signal ● Open Air Over enclosure

SPLIT PHASE

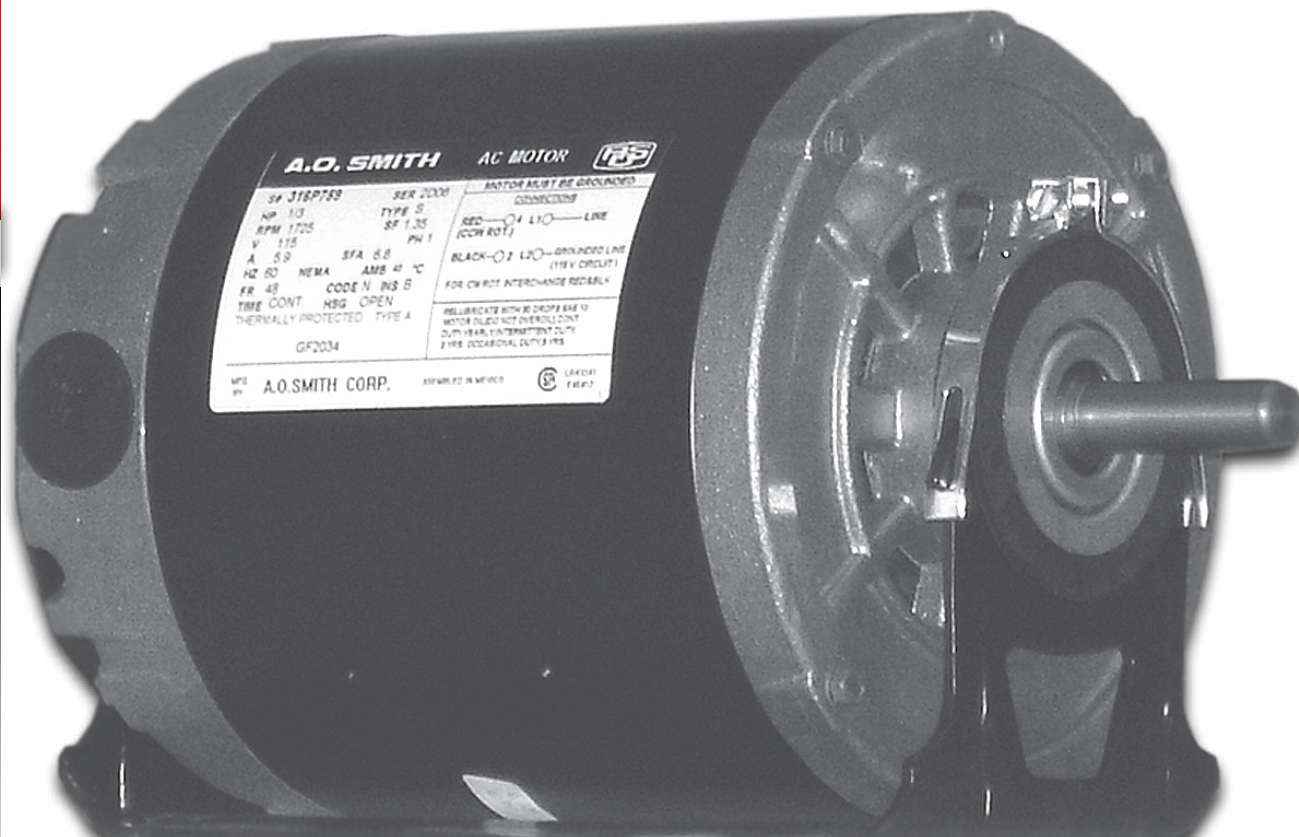
1725 RPM, resilient base, ODP, single speed, auto protector

HP	VOLTS	AMPS	SHAFT DIMENSION	FRAME	SERVICE FACTOR	BRAND	MODEL
SLEEVE							
1/4	115	5.0	1/2" x 1 5/8"	48/56	1.35	MARATHON	B206
1/4	115	5.0	1/2" x 1 5/8"	48/56	1.35	US	8000
1/4	115	4.6	1/2" x 1 5/8"	48/56	1.35	CENTURY	GF2024
1/3	115	5.5	1/2" x 1 5/8"	48/56	1.35	MARATHON	B207
1/3	115	5.5	1/2" x 1 5/8"	48/56	1.35	US	8100
1/3	115	5.9	1/2" x 1 5/8"	48/56	1.35	CENTURY	GF2034
1/2	115	7.5	1/2" x 1 5/8"	48/56	1.35	MARATHON	B208
1/2	115	7.5	1/2" x 1 5/8"	48/56	1.25	US	8200
1/2	115	7.2	1/2" x 1 5/8"	48/56	1.25	CENTURY	GF2054
3/4	115	11.4	1/2" x 1 5/8"	56	1.0	MARATHON	4338
3/4	115	12.2	1/2" x 1 5/8"	56	1.25	CENTURY	GK2074
3/4	115/230	11.0/5.5	1/2" x 1 5/8"	56	1.25	CENTURY	F681
BALL							
1/4	115/230	4.6/2.3	1/2" x 2 1/4"	48/56	1.35	US	PD6002*
1/3	115/230	6.0/3.0	1/2" x 2 1/4"	48/56	1.35	US	PD6004*
1/2	115/230	7.2/3.6	1/2" x 2 1/4"	48/56	1.25	US	PD6006*



GF2034

*extended thru bolts



UNIT HEATERS

5", SLEEVE BEARING

totally enclosed, 115V



U6430

HP	RPM	AMPS	SHAFT DIMENSION	"A" DIM.	ROTATION	BRAND	MODEL
SHADED POLE							
1/20	1050	1.7	3/8" x 3"	3 1/4"	CWSE	PEMS	P01871 NEW
1/15	1050	2.5	3/8" x 3"	3 1/4"	CWSE	PEMS	P01872 NEW
1/15	1050	2.5	1/2" x 2 3/4"	3 3/8"	CWSE	PEMS	P0387 NEW
1/15	1050	3.3	1/2" x 2 1/8"		CWSE	CENTURY	U6430
1/8	1050	4.5	1/2" x 2 1/8"		CWSE	CENTURY	U6431
PSC							
1/8	1075	2.6	1/2" x 2"		REV	CENTURY	U6520 ^
1/8	1075	2.6	1/2" x 2 3/4"		REV	CENTURY	U6521 ^ #

^ capacitor included
#includes base

5 5/8", WITH BASE

totally enclosed, capacitor included, single speed



UH1026

HP	RPM	VOLTS	AMPS	SHAFT DIMENSION	ROTATION	BRAND	MODEL
SLEEVE							
1/6	1075	115	2.8	1/2" x 1 3/4"	REV	CENTURY	US1016
1/4	1075	115	4.9	1/2" x 1 3/4"	REV	CENTURY	US1026
1/3	1075	115	5.3	1/2" x 2 1/4"	REV	CENTURY	US1036
BALL							
1/6	1075	115	2.2	1/2" x 2 3/8"	REV	CENTURY	UH1016
1/6	1625	115	2.0	1/2" x 3 1/4"	REV	FASCO	D736
1/4	1075	115	4.9	1/2" x 1 3/4"	REV	CENTURY	UH1026
1/4	1075	208-230	1.8	1/2" x 4 3/4"	REV	CENTURY	UHH1026
1/3	1075	115	5.3	1/2" x 2 1/4"	REV	CENTURY	UH1036
1/3	1075	208-230	2.2	1/2" x 4 3/4"	REV	CENTURY	UHH1036
1/2	1140	115/230	5.6/2.8	1/2" x 6"	CWSE	CENTURY	733

5 5/8", WITHOUT BASE

totally enclosed, capacitor included, single speed



US1016NB

HP	RPM	VOLTS	AMPS	SHAFT DIMENSION	ROTATION	CENTURY
SLEEVE						
1/6	1075	115	2.8	1/2" x 2 1/4"	REV	US1016NB
1/4	1075	115	4.9	1/2" x 2 1/4"	REV	US1026NB
1/4	1075	115	5.3	1/2" x 2 1/4"	REV	US1036NB
BALL						
1/6	1075	115	2.2	1/2" x 2 1/4"	REV	UH1016NB
1/3	1075	115	4.9	1/2" x 2 1/4"	REV	UH1026NB
1/3	1075/2	115	4.3	1/2" x 2 1/4"	REV	UH1036NB

ARMSTRONG WET ROTOR CIRCULATORS

HP	SPEED	VOLTS	REPLACES ARMSTRONG	REPLACES TACO	REPLACES GRUNDFOS	MODEL
1/25	3	115	ASTRO 30-3	007	UPS15-58FC	110223-305
1/25	3	115	ASTRO 30B*	007B	UP15-42SF	110223-306*
1/20	3	115	ASTRO 50	0014	UP26-64F	110223-307

*stainless steel



110223-305

ARMSTRONG S-SERIES (3 PIECE HOT WATER CIRCULATOR PUMPS)

3 phase and/or all bronze pumps available

HP	VOLTS	REPLACES ARMSTRONG	REPLACES B & G	MODEL
1/12	115	S25	SERIES100	174031-013
1/6	115	S35	2" NFI	174033-013
1/4	115	S45	2 1/2" LD3	174036-113
1/3	115	S46	HD3	174037-113
1/2	115/230	S55	PD35	106284-132
3/4	115/230	S57	PD37	106285-132



174031-013

ARMSTRONG H-SERIES (3 PIECE HOT WATER CIRCULATOR PUMPS)

3 phase and/or all bronze pumps available

HP	VOLTS	REPLACES ARMSTRONG	REPLACES B & G	MODEL
1/6	115	H32	HV NFI	174034-013
1/6	115	H41	PR	174035-113
1/4	115	H51	60-11	116431-132
1/3	115	H52	60-12	116435-132
1/2	115/230	H53	60-13	116439-132
3/4	115/230	H54	60-14	116451-132



174034-013

ARMSTRONG SEAL BEARING ASSEMBLIES

ARMSTRONG SERIES	BOLT CIRCLE MOTOR SIDE	BOLT CIRCLE PUMP SIDE	USE ON ARMSTRONG NUMBER	MODEL
2	4.63"	3.68" (4 hole)	S25	810119-001*
3	5.00"	4.43" (4 hole)	S34, S35, H32	816549-091
3	5.00"	4.43" (4 hole)	S35, H32	810119-003*
3	4.63"	4.43" (4 hole)	B & G 2", HVNFI	816023-001
4	5.00"	5.37" (4 hole)	S45, S46, H41	816027-002
5	5.86"	5.87" (8 hole)	H51, H52, H53, H54, H55, H57	816032-000

*comes with NFI impeller



810119-001

HOT WATER CIRCULATORS

HOT WATER CIRCULATOR MOTORS

1725 rpm, rotation as noted, single speed, mounting bracket included



OTA2004



CP-R1350

HP	VOLTS	REPLACES ARMSTRONG	REPLACES B & G	BOLT CIRCLE ⁺	SHAFT DIAMETER	SHAFT LENGTH	MODEL
1/12	115	---	---	---	1/2"	1"	OTA2004 ^o
1/12	115	---	---	---	1/2"	1"	4722 ^o
1/12	115	805316-010, 831000-061	111034	4.63"	1/2"	1/2"	CP-R1350
1/12	115	805316-010, 831000-061	111034	4.63"	1/2"	1/2"	3255
1/8	115	805316-010, 831000-061	111034	4.63"	1/2"	1/2"	OBG2004**
1/8	115	---	---	---	1/2"	1"	HW2004 ¹
1/8	115	---	---	---	1/2"	1"	4404 ¹
1/6	115	817025-005	111061	4.63"	1/2"	1/2"	CP-R1351
1/6	115	817025-005	111061	4.63"	1/2"	1/2"	3256
1/6	115	817025-001, 831001-061	111031, 111036	5.00"	1/2"	1/2"	CP-R1352
1/6	115	817025-001, 831001-061	111031, 111036	5.00"	1/2"	1/2"	3257
1/4	115	817025-007, 831002-061	111040	5.00"	1/2"	1/2"	CP-R1354
1/4	115	817025-007, 831002-061	111040	5.00"	1/2"	1/2"	3259
1/4	115	816141-001	169035	5.88"	1/2"	1/2"	CP-R1444
1/3	115	817025-013, 831003-061	111042	5.00"	1/2"	1/2"	CP-R1356
1/3	115	816141-002	169038~	5.88"	1/2"	1/2"	CP-R1446
1/3	115	816141-002	169038~	5.88"	1/2"	1/2"	3260
1/2	115/230	811757-001	111044 ^ ^	5.88"	5/8"	1 1/4"	CP-R1459
1/2	115/230	811757-001	111044 ^ ^	5.88"	5/8"	1 1/4"	3258
3/4	115/230	811757-002, 811757-033	111047 ^ ^	5.88"	5/8"	1 1/4"	CP-R1462
3/4	115/230	811757-002, 811757-033	111047 ^ ^	5.88"	5/8"	1 1/4"	3261
3/4	230/460*	811757-024	111049 ^ ^	5.88"	5/8"	1 1/4"	CP-R1470
1	115/230	811757-007, 811757-031	111050	5.88"	5/8"	1 1/4"	CP-R1463
1	230/460*	811757-028	169090	5.88"	5/8"	1 1/4"	CP-R1471

*3 phase

**used to replace 1/12 HP

~B&G unit is dual voltage

^ ^ B&G units have a 1/2" shaft diameter, must replace coupler

+all 4.63" and 5.0" BC motors are CWSE, 5.88" BC motors are CCWSE

^oreplaces Taco 110-388; mounting bracket not included

¹replaces Taco 110-185; mounting bracket not included

RIGID/C-FACE MOUNT

1725 rpm, CCWSE, single speed, no mounting bracket required



CP-R1365

HP	VOLTS	REPLACES ARMSTRONG	REPLACES B & G	BOLT CIRCLE ⁺	SHAFT DIAMETER	SHAFT LENGTH	MODEL
1/2	115/230	831009-061	111044 ^ ^	5.88"	5/8"	1 1/4"	CP-R1359
1/2	230/460*	811757-003, 020, 023, 831011-083	111046 ^ ^	5.88"	5/8"	1 1/4"	CP-R1368
3/4	115/230	831010-062	111047 ^ ^	5.88"	5/8"	1 1/4"	CP-R1362
3/4	230/460*	831012-083	111049 ^ ^	5.88"	5/8"	1 1/4"	CP-R1370
1	115/230	816676-062	111050	5.88"	5/8"	1 1/4"	CP-R1363
1	230/460*	816676-069	169090	5.88"	5/8"	1 1/4"	CP-R1371
1 1/2	115/230	816678-062	169095	5.88"	5/8"	1 1/4"	CP-R1365
1 1/2	230/460*	816678-069	169092	5.88"	5/8"	1 1/4"	CP-R1374
1 1/2	230/460*	816678-069	169092	5.88"	5/8"	1 1/4"	3265

*3 phase

^ ^ B&G units have a 1/2" shaft diameter, must replace coupler

PUMP COUPLERS

BORE SIZE	SPECIFICATIONS	MODEL
1/2" x 1/2"	1/12 TO 1/3 HP EASY LINK	T6-10010
1/2" x 1/2" or 1/2" x 5/8"	1/2 TO 3/4 HP SPIROLINK	T6-10023SL
1/2" x 5/8" or 5/8" x 5/8"	1 HP SPIROLINK	T6-10034SL
1/2" x 5/8" or 5/8" x 5/8"	SPIROLINK TACO	T6-10045SL



T6-10023SL

3 PIECE FLEXIBLE COUPLERS

BORE SIZE	DIMENSIONS	REPLACES ARMSTRONG	REPLACES B & G	MODEL
1/2" x 1/2"	2.0" x 2.06"	807436-000	P77234	3J8-8
1/2" x 5/8"	2.0" x 2.06"	806137-000	118635	3J8-10
5/8" x 5/8"	2.35" x 2.5"	816665-000	168003	4J10-10



3J8-8

ARMSTRONG COUPLERS

BORE SIZE	USE ON ARMSTRONG NUMBER	B & G NUMBER	MODEL
1/2" x 1/2"	S25, S34, S35, H32, H41	118705	806026-001
1/2" x 1/2"	S45, S46	118723	806168-001
1/2" x 5/8"	S55, S57	118635	806137-000*
1/2" x 5/8"	B & G PD39	118709	810120-006
1/2" x 1/2" yoke	B & G PD35, PD37	118473	810120-003
5/8" x 1/2" yoke	B & G PD40	186410	810120-008



806026-001

*3 piece flexible coupling-same as 3J8-10

CONDENSER FANS

5 5/8", CLOSED SHAFT END, SLEEVE BEARING

208-230, reversing plug, PSC

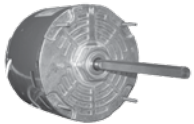


3329

HP	RPM	AMPS	SHAFT DIMENSION	BODY LENGTH	CAPACITOR	BRAND	MODEL
1/6	1075	0.9	1/2" x 6"	4 5/8"	5DV	GE	3327
1/4	1075	1.8	1/2" x 6 3/8"	4"	5DV	CENTURY	FS1026S
1/4	1075	1.8	1/2" x 6"	5 1/8"	5DV	GE	3328
1/3	1075	2.9	1/2" x 6 1/2"	4 1/4"	5DV	FASCO	D748
1/3	1075	2.9	1/2" x 6 3/8"	4 5/8"	5DV	CENTURY	FS1036S
1/3	1075	2.4	1/2" x 6"	5 3/8"	7.5DV	GE	3329
1/2	1075	4.1	1/2" x 6 1/2"	4 3/4"	10DV	FASCO	D745
1/2	1075	4.1	1/2" x 6 3/8"	5"	5DV	CENTURY	FS1056S
1/2	1075	3.6	1/2" x 6"	5 7/8"	10DV	GE	3330
3/4	1075	5.0	1/2" x 6 1/4"	5 1/4"	10DV	FASCO	D929
3/4	1075	5.0	1/2" x 6 3/8"	5 5/8"	10DV	CENTURY	FS1076S
3/4	1075	5.1	1/2" x 6"	6 5/8"	10DV	GE	3331

5 5/8", CLOSED SHAFT END, BALL BEARING

reversing plug, PSC



D912

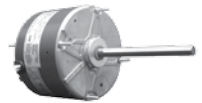
HP	RPM	AMPS	SHAFT DIMENSION	BODY LENGTH	CAPACITOR	BRAND	MODEL
208-230 VOLTS							
1/4	1075	1.7	1/2" x 6 1/2"	3 3/4"	5DV	FASCO	D7749
1/4	1075	1.4	1/2" x 6 3/8"	4 3/8"	5DV	CENTURY	F1026SB
1/3	1075	2.9	1/2" x 6 1/2"	4 1/4"	5DV	FASCO	D7748
1/3	1075	1.7	1/2" x 6 3/8"	5 1/8"	7.5DV	CENTURY	F1036SB
1/2	1075	3.7	1/2" x 6 1/2"	4 3/4"	10DV	FASCO	D7745
1/2	1075	2.5	1/2" x 6 3/8"	5 1/8"	10DV	CENTURY	F1056SB
3/4	1075	3.5	1/2" x 6 3/8"	6"	15DV	CENTURY	F1076S
460 VOLTS							
1/4	1075	1.1	1/2" x 6 3/8"	4 1/4"	5DV	FASCO	D913
1/3	1075	1.1	1/2" x 6 3/8"	4 1/4"	7.5DV	FASCO	D912
1/3	1075	1.0	1/2" x 6"	4 3/4"	5DV	CENTURY	436A
1/2	1075	1.7	1/2" x 6"	5 1/8"	7.5DV	CENTURY	435A
3/4	1075	2.2	1/2" x 6"	6"	10DV	CENTURY	158A
1	1075	5.0/2.5	1/2" x 6"	6"	15DV	CENTURY	159A*

*230/460 volts

5 5/8", TOTALLY ENCLOSED, SLEEVE BEARING

208-230V, reversing plug, PSC

HP	RPM	AMPS	SHAFT DIMENSION	BODY LENGTH	CAPACITOR	BRAND	MODEL
1/10	825	1.0	1/2" x 6"	3 7/8"	3DV	US	1871
1/8	825	0.8	1/2" x 6"	4 1/8"	5DV	US	1872
1/6	825	1.0	1/2" x 6"	4 1/8"	5DV	US	1873
1/6	825	1.0	1/2" x 6"	4 1/2"	5DV	US	8673*
1/4	825	2.0	1/2" x 6"	4 3/8"	5DV	US	1874
1/4	825	2.0	1/2" x 6"	4 5/8"	7.5DV	US	8674*
1/3	825	1.8	1/2" x 6"	5 1/8"	5.DV	US	1875
1/3	825	2.0	1/2" x 6"	5 1/2"	7.5DV	US	8675*
1/6	1075	1.0	1/2" x 6 1/2"	3 3/4"	5DV	FASCO	D917
1/6	1075	1.3	1/2" x 6"	4"	5DV	CENTURY	FSE1016SV1
1/6	1075	1.0	1/2" x 6"	4 3/4"	5DV	GE	3727
1/4	1075	1.8	1/2" x 6 1/2"	4"	5DV	FASCO	D909
1/4	1075	1.8	1/2" x 6 3/8"	4 3/8"	5DV	CENTURY	FSE1026SV1
1/4	1075	1.8	1/2" x 6"	4 3/4"	5DV	GE	3728
1/3	1075	2.4	1/2" x 6 1/2"	4 1/2"	7.5DV	FASCO	D908
1/3	1075	2.8	1/2" x 6 3/8"	5"	7.5DV	CENTURY	FSE1036SV1
1/3	1075	2.3	1/2" x 6"	5 3/4"	7.5DV	GE	3729
1/2	1075	3.7	1/2" x 6 1/2"	4 3/4"	10DV	FASCO	D907
1/2	1075	4.0	1/2" x 6"	5 1/8"	10DV	CENTURY	FSE1056SV1
1/2	1075	3.5	1/2" x 6"	6 1/4"	10DV	GE	3730
3/4	1075	5.0	1/2" x 6 1/2"	5 3/4"	15DV	FASCO	D933
3/4	1075	5.2	1/2" x 6 3/8"	5 5/8"	15DV	CENTURY	FSE1076SV1
3/4	1075	4.7	1/2" x 6"	6 3/4"	10DV	GE	3731



3728

*2 speed

5 5/8", TOTALLY ENCLOSED, BALL BEARING

reversing plug, PSC

HP	RPM	AMPS	SHAFT DIMENSION	BODY LENGTH	CAPACITOR	BRAND	MODEL
208-230 VOLTS							
1/4	1075	1.8	1/2" x 6 1/2"	4"	5DV	FASCO	D7909
1/4	1075	1.3	1/2" x 6 3/8"	4 5/8"	5DV	CENTURY	FE1026SC
1/3	1075	2.6	1/2" x 6 1/2"	4 1/2"	7.5DV	FASCO	D7908
1/3	1075	1.8	1/2" x 6 3/8"	4 7/8"	7.5DV	CENTURY	FE1036SC
1/2	1075	3.7	1/2" x 6 1/2"	5"	10DV	FASCO	D7907
1/2	1075	2.8	1/2" x 6 3/8"	5 5/8"	10DV	CENTURY	FE1056SC
3/4	1075	3.8	1/2" x 6 1/2"	5 5/8"	12.5DV	CENTURY	FE1076SF
460 VOLTS							
1/4	825	1.0	1/2" x 6"	5 1/8"	5DV	US	1880
1/3	825	1.0	1/2" x 6"	5 5/8"	7.5DV	US	1881
1/2	825	1.6	1/2" x 6"	6 3/8"	10DV	US	1882
1/4	1075	0.65	1/2" x 6"	4 3/4"	7.5DV	CENTURY	FEH1026SF
1/3	1075	0.8	1/2" x 6"	5 1/4"	7.5DV	CENTURY	FEH1036SF
1/2	1075	1.2	1/2" x 6"	5 5/8"	10DV	CENTURY	FEH1056SF
1/2	1075	2.4/1.2	1/2" x 6"	5 5/8"	10DV	CENTURY	FEH1056D*
3/4	1075	1.7	1/2" x 6"	6 1/8"	10DV	CENTURY	FEH1076SF
3/4	1075	3.4/1.7	1/2" x 6"	6 1/8"	10DV	CENTURY	FEH1076D*



D7908

*230/460 volts

CONDENSER FANS

5 5/8", TOTALLY ENCLOSED, CENTURY "HEATMASTER"

208-230, reversing plug, PSC, Class F Insulation, 70°C Max Ambient

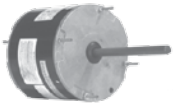


FSE1036SF

HP	RPM	AMPS	SHAFT DIMENSION	BODY LENGTH	CAPACITOR	MODEL
SLEEVE						
1/6	825	1.1	1/2" x 6 1/2"	4 1/8"	5DV	FSE1018SF
1/4	825	1.5	1/2" x 6 1/2"	4 5/8"	5DV	FSE1028SF
1/3	825	2.1	1/2" x 6 1/2"	5 1/8"	7.5DV	FSE1038SF
1/2	825	2.5	1/2" x 6 1/2"	5 5/8"	10DV	FSE1058SF
1/6	1075	1.4	1/2" x 6 1/2"	4"	5DV	FSE1016SF
1/4	1075	2.0	1/2" x 6 1/2"	4 3/8"	5DV	FSE1026SF
1/3	1075	2.8	1/2" x 6 1/2"	5"	7.5DV	FSE1036SF
1/2	1075	4.0	1/2" x 6 1/2"	5 3/8"	10DV	FSE1056SF
3/4	1075	5.1	1/2" x 6 1/2"	5 5/8"	15DV	FSE1076SF
BALL						
1/6	825	1.1	1/2" x 6 1/2"	4 1/8"	5DV	FE1018SF
1/4	825	1.5	1/2" x 6 1/2"	4 5/8"	5DV	FE1028SF
1/3	825	2.1	1/2" x 6 1/2"	5 1/8"	7.5DV	FE1038SF
1/2	825	2.5	1/2" x 6 1/2"	5 5/8"	10DV	FE1058SF
1/6	1075	1.4	1/2" x 6 1/2"	4"	5DV	FE1016SF
1/4	1075	2.0	1/2" x 6 1/2"	4 3/8"	5DV	FE1026SF
1/3	1075	2.8	1/2" x 6 1/2"	5"	7.5DV	FE1036SF
1/2	1075	4.0	1/2" x 6 1/2"	5 3/8"	10DV	FE1056SF
3/4	1075	5.1	1/2" x 6 1/2"	5 5/8"	15DV	FE1076SF

5 5/8", MULTIPLE HP MOTORS

totally enclosed, reversing plug, Rheem mounting holes



ORM5458B

HP	RPM	VOLTS	SHAFT DIMENSION	BODY LENGTH	CAPACITOR	BRAND	MODEL
SLEEVE							
1/3, 1/4, 1/5, 1/6, 1/8	825	208-230	1/2" x 6 1/2"	4 7/8"	7.5DV	CENTURY	ORM5488F+
1/3, 1/4, 1/5, 1/6	1075	208-230	1/2" x 6 1/2"	4 1/8"	7.5DV	CENTURY	ORM5458
1/3, 1/4, 1/5, 1/6	1075	208-230	1/2" x 6 1/2"	4 1/8"	7.5DV	CENTURY	ORM5458F+
1/3, 1/4, 1/5, 1/6	1075	208-230	1/2" x 3 3/4"	4 1/2"	5DV, 7.5 DV	FASCO	D837
BALL							
1/3, 1/4, 1/5, 1/6, 1/8	825	208-230	1/2" x 6 1/2"	4 7/8"	7.5DV	CENTURY	ORM5488B
1/3, 1/4, 1/5, 1/6, 1/8	825	208-230	1/2" x 6 1/2"	4 7/8"	7.5DV	CENTURY	ORM5488BF+
1/3, 1/4, 1/5, 1/6	825	208-230	1/2" x 5"	5 1/4"	10DV, 7.5DV	CENTURY	FE6001 ^
1/3, 1/4, 1/5, 1/6	825	208-230	1/2" x 5"	5 1/4"	7.5DV, 10DV	FASCO	D2826
1/3, 1/4, 1/5, 1/6, 1/8	825	460	1/2" x 6 1/2"	5 1/8"	7.5DV	CENTURY	ORM4688BF
1/2, 1/3, 1/4, 1/5	825	208-230	1/2" x 6"	5 5/8"	12.5DV, 10DV	CENTURY	FE6003 ^
1/3, 1/4, 1/5, 1/6	1075	208-230	1/2" x 6 1/2"	4 1/8"	7.5DV	CENTURY	ORM5458B
1/3, 1/4, 1/5, 1/6	1075	208-230	1/2" x 6 1/2"	4 1/8"	7.5DV	CENTURY	ORM5458BF+
1/3, 1/4, 1/5, 1/6	1075	208-230	1/2" x 6"	5"	7.5DV	CENTURY	FSE6000
1/3, 1/4, 1/5, 1/6	1075	208-230	1/2" x 6"	5"	7.5DV, 5DV	CENTURY	FE6000 ^
1/3, 1/4, 1/5, 1/6	1075	460	1/2" x 6 1/2"	4 7/8"	7.5DV	CENTURY	ORM4658BF
1/2, 1/3, 1/4, 1/5	1075	208-230	1/2" x 5"	5 1/4"	12.5DV, 10DV	CENTURY	FE6002 ^
1/2, 1/3, 1/4, 1/5	1075	208-230	1/2" x 5"	5 1/4"	10DV, 12.5DV	FASCO	D2827
3/4, 1/2, 1/3, 1/4	1075	208-230	1/2" x 6"	5 7/8"	15DV, 12.5DV	CENTURY	FE6004 ^

+class F insulation, 70°C max ambient

"ORM" models feature one simple connection for all HP ratings

^ "FE" models feature mounting holes in lead end bracket for Rheem & Trane OEM applications

SINGLE PHASE FAN CANOPY CONDENSER MOTORS

reversing plug, PSC, 48 frame, ball bearing

HP	RPM	VOLTS	SHAFT DIMENSION	CENTURY
0.04	1075	208-230/460	1/2"	FC1046F
0.06	1075	208-230/460	1/2"	FC1066F
0.06	1075	208-230/460	5/8"	FC1066AF
0.08	1075	208-230/460	1/2"	FC1086F
0.08	1075	208-230/460	5/8"	FC1086AF
1	1075	208-230/460	5/8"	FC1106F*
1 1/2	1075	208-230/460	5/8"	FC1156F*



FC1046F

*supplied w/ conversion kits for 56 frame applications
A.O. Smith models have class F insulation

SINGLE PHASE 56 FRAME COMMERCIAL CONDENSER FAN MOTORS

closed shaft end, ball bearing, PSC

HP	RPM	VOLTS	SHAFT DIMENSIONS	MARATHON	CENTURY
1/2	825	200-230/460	5/8" x 6"	---	C512
1/2	1075	200-230/460	5/8" x 6"	---	C513
3/4	825	200-230/460	5/8" x 6"	---	C660
3/4	1075	200-230/460	5/8" x 6"	X207	C661
1	825	200-230/460	5/8" x 6"	---	C490
1	1075	200-230/460	5/8" x 6"	X206	C770
1 1/2	1075	200-230/460	5/8" x 6"	X271	C771



C770

5", CAP-CAN CONDENSER FAN/HEAT PUMP MOTORS

208-230V, ball bearing, totally enclosed, PSC

HP	RPM	AMPS	ROTATION*	CAPACITOR	CENTURY	US	GE
1/10	1075	0.74	CW	5DV	---	2243	G2243
1/8	1075	1.1	CW	5DV	---	---	G2251+
1/8	1075	0.86	CW	5DV	---	---	G2248
1/8	1075	0.75	CCW	5DV	---	2249	G2249
1/6	1075	1.3	CCW	5DV	---	---	G2247
1/5	1075	1.6	CW	5DV	---	2246	G2246
1/4	1075	1.0	CCW	5DV	---	2250	G2250+
1/4	1075	1.7	CW	7.5DV	---	---	G2244
1/4	1075	1.7	CCW	7.5DV	---	---	G2245
1/8, 1/10, 1/12	1075	0.9, 0.6, 0.5	reversible	5DV	9722	---	---
1/4, 1/5, 1/6	1075	2.0, 1.2, 1.0	reversible	7.5DV	9723	---	---
1/4, 1/5, 1/6	1550	1.6, 1.0, 0.7	reversible	5DV	9724	---	---



2248



9722

+ open construction

*rotation viewed opposite shaft end

3 PHASE CONDENSER FANS

56 FRAME, CLOSED SHAFT END, COMMERCIAL FAN MOTORS

closed shaft end, reversible, shaft with both keyway and flat, ball bearing



H1053

HP	RPM	VOLTS	SHAFT DIMENSION	MARATHON	US	CENTURY
1/2	1140	200-230/460	5/8" x 5"	X500	---	H564+
3/4	1140	200-230/460	5/8" x 5"	X501	1817	H567+
1	850	200-230/460	5/8" x 5"	X507	---	H686/H1053A ^
1	1140	200-230/460	5/8" x 5"	X502	1818	H667+/H1050A ^
1 1/2	850	200-230/460	5/8" x 5"	X530	----	---
1 1/2	1140	200-230/460	5/8" x 5"	X503	1819	H767+/H1051A ^
2	1140	208-230/460	5/8" x 5"	X509	----	H699+/H1052A ^
SPL	1140	208-230/460-575	5/8" x 3 1/2"	---	---	H978*

*replaces Carrier HD52AK652

+shaft length is 6"

^ Class F insulation (inverter duty)

H1053, H1050, H1051, and H1052 have removable bases

56 FRAME, TOTALLY ENCLOSED, COMMERCIAL FAN MOTORS

totally enclosed, reversible, shaft with both keyway and flat, ball bearing



H697

HP	RPM	VOLTS	SHAFT DIMENSION	CENTURY
1	1140	200-230/460	5/8" x 4"	H685*
1	1140	200-230/460	5/8" x 4 7/8"	H696
1 1/2	1140	200-230/460	5/8" x 6"	H697
1 1/2	1140	200-230/460	5/8" x 6"	H768*
2	1140	200-230/460	5/8" x 3 1/2"	H698

*rigid base

56 FRAME COMMERCIAL FAN MOTORS, MARATHON'S PATENTED VCD-VOLTAGE CHANGE DEVICE

closed shaft end, shaft with both keyway and flat, rigid base



X523

HP	RPM	VOLTS	SHAFT DIMENSION	MARATHON
1/2	1140	200-230/460	5/8" x 5"	X533
1/2	850	200-230/460	5/8" x 5"	X529
1	1140	200-230/460	5/8" x 5"	X513
1	850	200-230/460	5/8" x 5"	X528
1 1/2	1140	200-230/460	5/8" x 5"	X523
1 1/2	850	200-230/460	5/8" x 5"	X531
2	1140	200-230/460	5/8" x 5"	X525

3 PHASE FAN CANOPY CONDENSER MOTORS

48 frame, ball bearing, class F insulation



FC3056F

HP	RPM	VOLTS	SHAFT DIMENSION	CENTURY
1/2	1140	200-230/460	1/2"	FC3056F
3/4	1140	200-230/460	5/8"	FC3076F
1	1140	200-230/460	5/8"	FC3106F*
1 1/2	1140	200-230/460	5/8"	FC3156F*

*supplied w/ conversion kits for 56 frame application

SINGLE SPEED, TOTALLY ENCLOSED, CONDENSER FAN

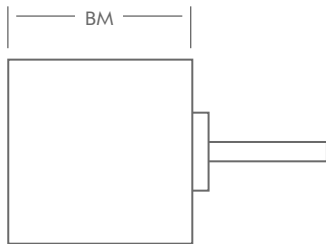
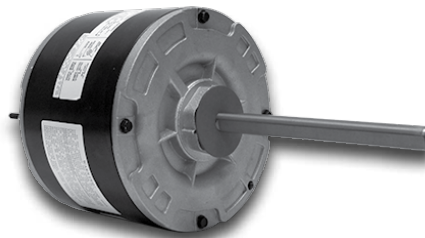
208-230 Volts, Ball Bearing 1/2" x 6" Shaft Size

Cross Reference

HP	AMPS	RPM	"BM" DIM.	CAP (MFD) 370V	ECONOMASTER	PACKARD	MARS	WAGNER/DIVERSITECH	SMART ELECTRIC
1/6	1.0-1.1	825	4.11	5	EM3403	60825	10403/10203	---	---
1/4	1.3-1.4	825	4.61	5	EM3404	40825	10404/10204	WG840204	---
1/3	1.6-1.8	825	5.11	7.5	EM3405	30825	10405/10205	WG840205	---
1/2	2.2-2.5	825	5.61	10	EM3746	---	10746	---	---
1/6	1.0-1.1	1075	3.86	5	EM3727	43727	10727/10732	WG840727	SE3727
1/4	1.8-2.0	1075	4.11	5	EM3728	43732	10728/10733	WG840728	SE3728
1/3	2.2-2.5	1075	4.61	7.5	EM3729	43733	10729/10734	WG840729	SE3729
1/2	3.0-3.5	1075	5.11	10	EM3730	43734	10730/10735	WG840730	SE3730
3/4	4.6-5.3	1075	5.36	10	EM3731	43735	10731/10736	WG840731	SE3731

Features

- Electrically Reversible
- Energy Efficient
- 60°C Ambient
- Single Phase
- UL/CSA Approved
- Class "B" Insulation
- Auto Protector
- 26" Lead Length
- 60 Hz



MULTI-HORSEPOWER, TOTALLY ENCLOSED, CONDENSER FAN

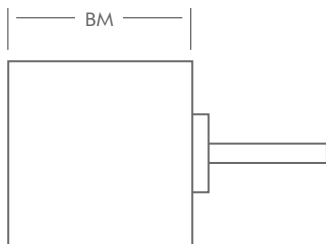
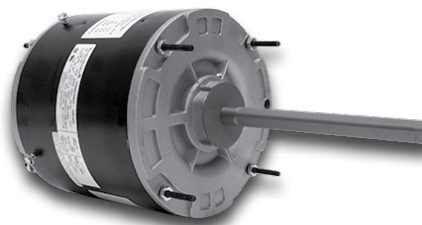
208-230 Volts, Ball Bearing 1/2" x 6" Shaft Size

Cross Reference

HP	AMPS	RPM/SPEED	"BM" DIM.	CAP (MFD) 370V	ECONOMASTER	PACKARD	MARS	WAGNER/DIVERSITECH	SMART ELECTRIC
1/3, 1/5	1.9, 1.2	825/2	5.24	10 OR 7.5	EM3469	---	10469	WG840469	SE3469
1/3, 1/5	2.6, 1.4	1075/2	4.86	7.5 OR 5	EM3465	---	10465	WG840465	SE3465
1/2, 1/4	3.6, 1.7	1075/2	5.24	12.5 OR 10	EM3468	---	10468	WG840468	SE3468
<i>4-in-1 Simple, Two Wire Connection, 48" Lead Length, 1/2" x 6.7" Shaft Size</i>									
1/3-1/8	1.8-2.0	825	4.86	7.5	EM3459	45488	10459	---	---
1/3-1/6	1.8-2.0	1075	4.11	7.5	EM3458	45458	10458	---	---

Features

- Electrically Reversible
- Energy Efficient
- 60°C Ambient
- Single Phase
- UL/CSA Approved
- Class "B" Insulation
- Auto Protector
- 36" Lead Length
- 60 Hz
- Rheem Holes in Shell



HI TEMP™ 70°C, SINGLE SPEED, TOTALLY ENCLOSED, CONDENSER FAN

Ball Bearing 1/2" x 6" Shaft Size

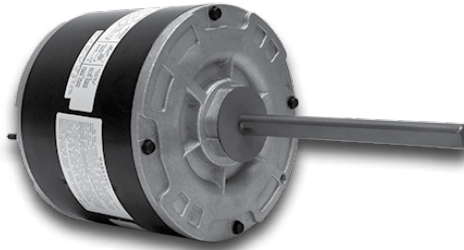
Cross Reference

HP	VOLTS	AMPS	RPM/ SPEED	"BM" DIM.	CAP (MFD) 370V	ECONOMASTER	PACKARD	MARS	WAGNER/ DIVERSITECH
1/6	208-230	1.0-1.1	825	4.11	5	EM3403F	60825F	20403	---
1/4	208-230	1.3-1.4	825	4.61	5	EM3404F	40825F	20404	WG840204HT
1/3	208-230	1.6-1.8	825	5.11	7.5	EM3405F	30825F	20405	WG840205HT
1/2	208-230	2.2-2.5	825	5.61	10	EM3746F	---	20746	---
1/6	208-230	1.0-1.1	1075	3.86	5	EM3727F	43727BF	20727	---
1/4	208-230	1.8-2.0	1075	4.11	5	EM3728F	43732F	20728	WG840728HT
1/3	208-230	2.2-2.5	1075	4.61	7.5	EM3729F	43733F	20729	WG840729HT
1/2	208-230	3.0-3.5	1075	5.11	10	EM3730F	43734F	20730	WG840730HT
3/4	208-230	4.6-5.3	1075	5.36	10	EM3731F	43735F	20731	WG840731HT
1/4	460	1.0	1075	4.74	7.5	EM3736F	---	20836	---
1/3	460	1.3	1075	5.24	7.5	EM3737F	---	20837	---
1/2	460	1.5	1075	5.61	10	EM3738F	---	20838	---
HI Temp™ 70°C, Multi-horsepower, Totally Enclosed, Condenser Fan, 36" Lead Length									
1/3, 1/5	208-230	1.9, 1.2	825/2	5.24	10 OR 7.5	EM3469F	---	20469	---
1/3, 1/5	208-230	2.6, 1.4	1075/2	4.86	7.5 OR 5	EM3465F	---	20465	---
1/2, 1/4	208-230	3.6, 1.7	1075/2	5.24	12.5 OR 10	EM3468F	---	20468	---
4-in-1® 70°C, Simple, Two Wire Connection, 48" Lead Length									
1/3-1/8	208-230	1.8-2.0	825	4.86	7.5	EM3459F*	45488BF	20459	---
1/3-1/6	208-230	1.8-2.0	1075	4.11	7.5	EM3458F*	45458BF	20458	---
1/3-1/8	460	1.0	825	5.24	7.5	EM3209F	---	20884	---

* 1/2" x 6.7" shaft size

Features

- Electrically Reversible
- Energy Efficient
- 40°C Ambient
- Single Phase
- UL/CSA Approved
- Class "B" Insulation
- Auto Protector
- 26" Lead Length



THREE SPEED, BLOWER MOTORS

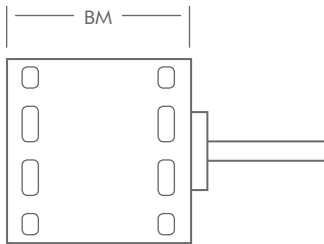
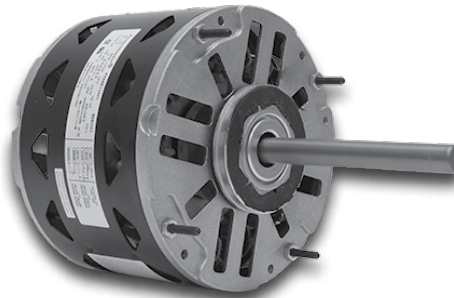
Sleeve Bearing, 1075 RPM, 1/2" x 4" Shaft Size

Cross Reference

HP	VOLTS	AMPS	"BM" DIM.	CAP (MFD)	370V	ECONOMASTER	PACKARD	MARS	WAGNER/DIVERSITECH	SMART ELECTRIC
1/4	115	4.2-2.4-2.0	3.99	5		EM3583	43583	10583	WG840583	SE3583
1/4	208-230	2.0-1.1-0.9	3.99	5		EM3584	43584	10584	WG840584	SE3584
1/3	115	5.5-3.0-2.0	4.36	7.5		EM3585	43585	10585	WG840585	SE3585
1/3	208-230	2.8-1.7-1.2	4.36	5		EM3586	43586	10586	WG840586	SE3586
1/2	115	7.5-4.5-3.0	4.86	10		EM3587	43587	10587	WG840587	SE3587
1/2	208-230	3.6-2.3-1.6	4.86	10		EM3588	43588	10588	WG840588	SE3588
3/4	115	10.2-7.3-4.5	5.36	15		EM3589	43589	10589	WG840589	SE3589
3/4	208-230	5.5-4.5-3.2	5.36	10		EM3590	43590	10590	WG840590	SE3590

Features

- Electrically Reversible
- Energy Efficient
- 40°C Ambient
- Single Phase
- Class "B" Insulation
- Auto Protector
- 26" Lead Length
- UL/CSA Approved



FOUR SPEED, MULTI-HORSEPOWER, BLOWER MOTORS

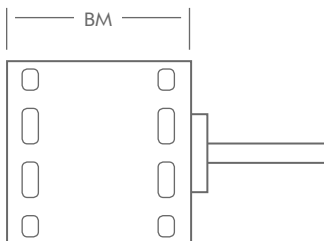
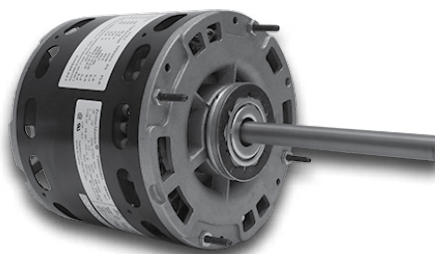
Sleeve Bearing, 1075 RPM, 1/2" x 4.5" Shaft Size

Cross Reference

HP	VOLTS	AMPS	"BM" DIM.	CAP (MFD)	370V	ECONOMASTER	PACKARD	MARS	WAGNER/DIVERSITECH	SMART ELECTRIC
1/2-1/6	115	7.0	4.86	10, 7.5, 5		EM3463	45460	10463	WG840463	SE3463
1/2-1/6	208-230	3.9	4.86	10, 7.5, 5		EM3464	45461	10464	WG840464	SE3464
3/4-1/5	115	9.1	4.86	10, 7.5, 5		EM3466	45470	10466	WG840466	SE3466
3/4-1/5	208-230	3.9	4.86	10, 7.5, 5		EM3467	45471	10467	WG840467	SE3467

Features

- Electrically Reversible
- Energy Efficient
- 40°C Ambient
- Single Phase
- UL/CSA Approved
- Class "B" Insulation
- Auto Protector
- 38" Lead Length
- Rheem Holes in Shell



ELCO MULTI-MOUNT MOTORS

shaded pole, 4 pole, 1550 RPM, totally enclosed, 50/60 Hz, long life lubricated Sintec sleeve bearings, CW rotation-opposite shaft end, includes nuts, screws and fan blade adapter

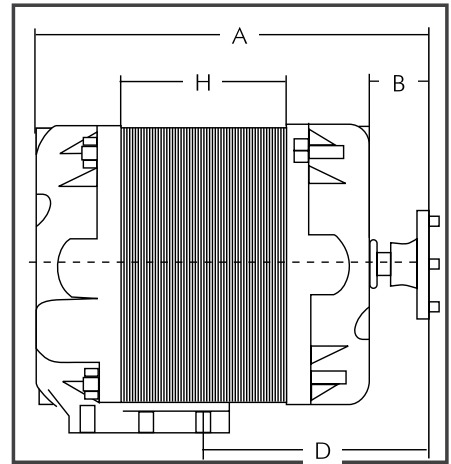
WATT	VOLTS	AMPS	MODEL	DIMENSIONS			
				H	A	B	D
4	115	0.36	EC-4W115	0.51"	2.82"	0.49"	1.65"
4	230	0.18	EC-4W230				
5	115	0.40	EC-5W115	0.79"	3.05"	0.49"	1.89"
5	230	0.20	EC-5W230				
6	115	0.41	EC-6W115	0.79"	3.25"	0.63"	---
6	230	0.20	EC-6W230				
9	115	0.58	EC-9W115	0.79"	3.05"	0.49"	1.89"
9	115	0.58	EC-9W115NF*				
9	230	0.35	EC-9W230	1.18"	3.60"	0.63"	2.44"
16	115	1.00	EC-16W115				
16	230	0.50	EC-16W230	1.77"	4.19"	0.61"	2.40"
34	115	1.60	EC-34W115				
34	230	0.80	EC-34W230				

*no side bosses

#EC-EUBKT01

MOUNTING ADAPTER BRACKET

Used when replacing European style Elco motors with the above US style Elco motors.



ELCO FAN BLADES

USE WITH	DIA.	PITCH	BLADES	APPLICATION	CONSTRUCTION	MODEL
4 & 5W	6.06"	28°	5	SUCTION	PLASTIC	EC-4VEA012
4 & 5W	6.06"	19°	5	SUCTION	ALUMINUM	EC-4012309
4 & 5W	6.77"	28°	5	BLOWER	ALUMINUM	EC-4012543
6 & 9W	7.87"	28°	5	SUCTION	PLASTIC	EC-4VEA009
6 & 9W	7.87"	34°	5	SUCTION	PLASTIC	EC-4EA010
9W	9.05"	25°	5	SUCTION	PLASTIC	EC-4VEA013
16W	9.05"	31°	5	SUCTION	PLASTIC	EC-4EA006
16W	10.0"	28°	5	SUCTION	PLASTIC	EC-4EA007

UNIT BEARING WATT MOTORS

1550 RPM, 2-9 watt are aluminum, 16-50 watt are cast iron, 2-35 watt have a 1/4" x 20" threaded shaft, 50 watt has a 3/8" x 1 1/2" shaft, rotation is viewed opposite shaft

WATT	VOLTS	NUMBER OF SIDE BOSSES	ROTATION	REPLACES	FASCO
2	115	2	CW	5109	D550
2	115	2	CCW	---	D551
2	230	2	CW	---	D552
2	230	2	CCW	---	D553
4	115	2	CW	5213	D554
4	115	2	CCW	5214	D555
4	230	2	CW	5223	D556
4	230	2	CCW	5224	D557
5	115	2	CW	---	D582
5	115	2	CCW	---	D583
6	115	2	CW	5313	D558
6	115	2	CCW	5314	D559
6	230	2	CW	---	D560
6	230	2	CCW	---	D561
9	115	2	CW	5413	D562
9	115	2	CCW	5414	D563
9	230	2	CW	5423	D564
9	230	2	CCW	5424	D565
16	115	1	CW	5811	D566
16	115	1	CCW	5812	D567
16	230	1	CW	5821	D568
16	230	1	CCW	5822	D569
25	115	2	CW	ESPL25EM1	D570
25	115	2	CCW	ESPL25EMR2	D571
25	230	2	CW	ESPL25EM2	D572
25	230	2	CCW	ESPL25EMR2	D573
35	115	2	CW	ESPL35EM1	D574
35	115	2	CCW	ESPL35EMR1	D575
35	230	2	CW	ESPL35EM2	D576
35	230	2	CCW	ESPL35EMR2	D577
50	115	2	CW	ESPOL50EM1	D578
50	115	2	CCW	ESPOL50EMR1	D579
50	230	2	CW	ESPOL50EM2	D580
50	230	2	CCW	ESPOL50EMR2	D581



D562



D580

ENERGY SAVING ECM MOTORS

advanced ECM design, rain shielded, cast iron, 13" leads, Lyall plug, UL approved E128044, double mounting bosses (side feet), 5 drilled and tapped mounting holes in rear

WATT	RPM	VOLTS	AMPS	ROTATION	OSE	US	CENTURY
6, 9, 12	1550	115	0.2-0.3	CW	---	---	9207F2
14, 15, 16	1550	115	0.47-0.58	CW	---	---	9208F2
4-25	1550	115/230	---	CW	---	EC5411D	---



9207F2



EC5411D

5" DIAMETER (1550 RPM)

PSC, reversible, sleeve bearing, 3/8" x 3 1/3" shaft with 1/2" bushing, front end shield drilled and tapped with four 10-32 threads on 3.5" bolt circle, capacitor included

HP	AMPS	VOLTS	CAPACITOR	REPLACES GE	FASCO
1/20	1.2/0.6	115/208-230	3DV	2341, 2342, 2331, 2332	D488
1/15	1.2/0.6	115/208-230	3DV	2241, 2342, 2231, 2232	D489
1/10	1.9/1.0	115/208-230	3DV	2141, 2142, 2131, 2132	D474



D488

FARM DUTY MOTORS

1725 RPM, single phase, TEFC, with manual reset thermal protector



K205

HP	VOLTS	FRAME	SHAFT DIAMETER	CENTURY	MARATHON	US
1/3	115/230	56	5/8"	C310+	F101	FD13CM2P
1/2	115/230	56	5/8"	C311	F102	FD12CM2P
3/4	115/230	56	5/8"	C312	F103	FD34CM2P
1	115/230	56	5/8"	C313	F104	FD1CM2PZ
1	115/230	143T	7/8"	K102*	Z123	FD1CM2P14
1 1/2	115/230	56	5/8"	C314	F105	FD32CM2PZ
1 1/2	115/230	145T	7/8"	K104	Z118	FD32CM2P14
1 1/2	115/230	145T	7/8"	K103*	---	FDU32CM2P14*
2	230	56HZ	7/8"	C319	Z128 ^	FD2CM2PHZ
2	115/230	182TZ	7/8"	K119	---	---
2	115/230	182TZ	7/8"	K204*	Z112A*	FDU2CM2P18Z*
2	115/230	182T	1 1/8"	K213	Z119A	FD2CM2P18
3	230	184T	1 1/8"	K214	Z120	FD3CM2K18
3	230	184T	1 1/8"	K205*	Z113A*	FDU3CM2K18*
5	230	184T	1 1/8"	K215	Z121	FD5CM2K18
5	230	184T	1 1/8"	K208*	Z114A*	FDU5CM2K18*
5	230	213TZ	1 1/8"	K300*	Z117*	FDU5CM2K21Z
5	230	213T	1 3/8"	K310	---	FD5CM2K21
7 1/2	230	215TZ	1 1/8"	K301*	Z115*	FDU7CM2K21Z
7 1/2	230	215T	1 3/8"	K311	Z122	FD7CM2K21
10	230	215T	1 3/8"	K312	---	FD10CM2K21
10	230	215T	1 3/8"	K302*	Z116*	FDU10CM2K21*

*extra high torque
+TENV
^ 145T

C-FACE FARM DUTY MOTORS

1725 PRM, single phase, TEFC, C-face with rigid base and manual reset thermal protector



C312C

HP	VOLTS	FRAME	SHAFT DIAMETER	CENTURY	MARATHON	US
1/3	115/230	56C	5/8"	C310C+	F131	
1/2	115/230	56C	5/8"	C311C	F132	
3/4	115/230	56C	5/8"	C312C	F133	
1	115/230	56C	5/8"	C313C	F134	
1	115/230	143TC	7/8"	K102C*	---	
1 1/2	115/230	56C	5/8"	C314C	F135	
1 1/2	115/230	145TC	7/8"	K103C*	---	
2	115/230	182TCZ	7/8"	K204C*	---	
3	230	184TC	1 1/8"	K205C*	I314	FDU3CM2K18C*
5	230	184TC	1 1/8"	K208C*	I315	FDU5CM2K18C*
5	230	215TCZ	1 1/8"	K300C*	---	
7 1/2	230	215TCZ	1 1/8"	K301C*	---	
7 1/2	230	215TC	1 3/8"	---	---	FDU7CM2K21C*
10	230	215TC	1 3/8"	K302C*	---	FDU10CM2K21C*

*extra high torque
+TENV

GRAIN STIRRING MOTOR

230V, capacitor start/capacitor run, TEFC with manual thermal protector



C317

HP	RPM	AMPS	FRAME	SHAFT	CENTURY
1 1/2	1800	7.4	56Y	7/8" x 1"	C317

CROP DRYER FARM MOTORS

rigid base, ball bearing, PSC, ODP

HP	RPM	VOLTS	SHAFT DIMENSION	FRAME	CENTURY	MARATHON
3-4.5	3600	230	7/8" x 3"	145TZ	---	Z304
5-7	3600	200-230	1 1/8" x 3 1/2"	184TZ	K220	---
5-7.5	3600	230	1 1/8" x 3"	184TZ	---	Z305
7-9	3600	230	1 1/8" x 3"	184TZ	---	Z306
7-10	3600	230	1 1/8" x 3"	184TZ	---	Z307
7-10.5	3600	200-230	1 1/8" x 3 1/2"	184TZ	K221	---
7.5-10.5	3600	200-230	1 1/8" x 4 1/2"	215TZ	K320	---
10-12	1800	230	1 3/8" x 5 1/2"	215TZ	K327	---
10-14	3600	200-230	1 1/8" x 4 1/2"	215TZ	K321	---
10-15	3600	230	1 1/8" x 3 1/2"	215TZ	---	Z308



K321

DC FARM TRACTOR CAB PRESSURIZER MOTOR

VOLTS	SPEED	SHAFT DIMENSION	BODY DIAMETER	BODY LENGTH	BOLT CIRCLE	PEMS
12	3	4 5/8" x 3/8" x 4 5/8"	3 1/2"	4 1/8"	2 7/8"	2224FB



2224FB

POULTRY DUTY MOTORS

ball bearing, TEAO

HP	RPM	VOLTS	BASE	SERVICE FACTOR	BRAND	MODEL
1/2	825	115/230	none	---	FASCO	D998
1	1725	115/230	rigid	1.0	MARATHON	X912
1	1725	115/230	rigid	1.4	CENTURY	C782
1	1725	115/230	rigid	1.25	US	FD34BA2P



X912

AUGER DRIVE MOTORS

ball bearing, TEAO, 1800 RPM, 7 1/4" bolt circle

HP	VOLTS	FRAME	SHAFT DIMENSION	CENTURY	US	MARATHON
1/3	115/230	48N	1/2" x 1 1/2"	C330	FD13BM2PZYR	F201
1/2	115/208-230	48N	1/2" x 1 1/2"	C331	FD12CM2PZYR	F202
3/4	115/208-230	56N	1/2" x 1 1/2"	C332	FD34CM2PZYR	F203
1	115/208-230	56N	5/8" x 2"	C333	8838	F204
1 1/2	115/208-230	56N	5/8" x 2"	C340	FD32CM2PHZY*	F205

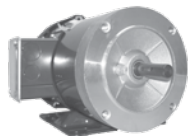


C332

*flange mount and rigid base

56C FRAME GENERAL PURPOSE MOTORS-THREE PHASE

TEFC, ball bearing, 1.15 SF, C-face with rigid base (Marathon models are 4-in-1 with removable base)



G583

HP	RPM	VOLTS	FRAME	MARATHON	US
1/3	3600	208-230/460	56C	D390*	---
1/3	1800	208-230/460	56C	G580*	U13S2AC
1/2	3600	208-230/460	56C	D391	U12S1AC
1/2	1800	208-230/460	56C	G581	U12S2AC
3/4	3600	208-230/460	56C	D392	U34S1AC
3/4	1800	208-230/460	56C	G582	U34S2AC
1	3600	208-230/460	56C	D393	U1S1AC
1	1800	208-230/460	56HC	G583	U1S2AFC
1 1/2	3600	208-230/460	56C	D394	U32S1AFC
1 1/2	1800	208-230/460	56HC	G584	U32S2AFC
2	3600	208-230/460	56HC	D395	U2S1AFC
2	1800	208-230/460	56HC	G585	U2S2AFC
3	3600	208-230/460	56HC	D396	U3S1AFC
3	1800	208-230/460	56HCZ	G590+	---

+has 7/8" diameter shaft, 2 1/8" long

56C FRAME GENERAL PURPOSE MOTORS-SINGLE PHASE

TEFC, ball bearing, 1.15 SF, C-face with rigid base (Marathon models are 4-in-1 with removable base)



G573

HP	RPM	VOLTS	FRAME	MARATHON	US
1/3	1800	115/208-230	56C	G570	T13C2JC
1/2	3600	115/208-230	56C	D311	---
1/2	1800	115/208-230	56C	G571	T12C2JC
3/4	3600	115/208-230	56C	D312	T34C1JC
3/4	1800	115/208-230	56C	G572	---
1	3600	115/208-230	56C	D313	---
1	1800	115/208-230	56HC	G573	T1C2JHC
1 1/2	3600	115/208-230	56C	D314 ^	---
1 1/2	1800	115/208-230	56HC	G574 ^	T32C2JHC ^
2	3600	115/208-230	56HC	D315 ^	---
2	1800	115/208-230	56HC	G575 ^	T2C2JHC ^

^ cap start/cap run

CAPACITOR START MOTORS

115/208-230V (except as noted), 1725 RPM, single speed, ODP

BASE	HP	FRAME	OVERLOAD	BEARING	SF	BRAND	MODEL
RESILIENT CRADLE BASE	1/4	48	AUTO	SLEEVE	1.35	CENTURY	RS1024A
	1/4	48	AUTO	BALL	1.35	CENTURY	C196
	1/4	48	AUTO	BALL	1.35	MARATHON	G1115
	1/3	56	AUTO	SLEEVE	1.35	CENTURY	C455
	1/3	56	AUTO	SLEEVE	1.35	US MOTORS	1790
	1/3	56	AUTO	BALL	1.35	CENTURY	C403
	1/3	56	AUTO	BALL	1.35	MARATHON	C216
	1/3	56	AUTO	BALL	1.35	US MOTORS	D13CA2JH9+
	1/2	56	AUTO	SLEEVE	1.25	CENTURY	C607
	1/2	56	AUTO	BALL	1.25	CENTURY	C412
	1/2	56	AUTO	BALL	1.25	MARATHON	B317
	1/2	56	AUTO	BALL	1.25	US MOTORS	D12CA2JH9+
	1/2	56	NONE	BALL	1.25	MARATHON	B1316
	1/2	56	NONE	BALL	1.25	US MOTORS	D12C2J9
	3/4	56	AUTO	SLEEVE	1.25	CENTURY	C654
	3/4	56	AUTO	BALL	1.25	CENTURY	C426
	3/4	56	AUTO	BALL	1.25	MARATHON	B319
	3/4	56	AUTO	BALL	1.25	US MOTORS	3753
	3/4	56	NONE	BALL	1.25	MARATHON	B318
	3/4	56	NONE	BALL	1.25	US MOTORS	D34C2J9
	1	56	AUTO	SLEEVE	1.15	CENTURY	C692
	1	56	AUTO	BALL	1.15	CENTURY	C523*
	1	56	AUTO	BALL	1.15	MARATHON	4688
	1	56	AUTO	BALL	1.15	US MOTORS	D1CA2JH9+
	1	56	NONE	BALL	1.15	MARATHON	C235
	1	56	NONE	BALL	1.15	US MOTORS	3754
1 1/2	56	AUTO	BALL	1.15	CENTURY	C621	
1 1/2	56	AUTO	BALL	1.15	MARATHON	C1160*	
1 1/2	56	AUTO	BALL	1.15	US MOTORS	D32CA2JH9+	
2	56H	AUTO	BALL	1.15	CENTURY	RB1204A	
RIGID WELDED BASE	1/3	56	AUTO	BALL	1.35	CENTURY	C222
	1/3	56	AUTO	BALL	1.35	MARATHON	C159
	1/3	56	NONE	BALL	1.35	MARATHON	C158
	1/2	56	AUTO	BALL	1.25	CENTURY	C630
	1/2	56	AUTO	BALL	1.25	MARATHON	C168
	1/2	56	AUTO	BALL	1.25	US MOTORS	D12CA2J
	1/2	56	NONE	BALL	1.25	MARATHON	C167
	1/2	56	NONE	BALL	1.25	US MOTORS	D12C2J
	3/4	56	AUTO	BALL	1.25	CENTURY	C658
	3/4	56	AUTO	BALL	1.25	MARATHON	C176
	3/4	56	AUTO	BALL	1.25	US MOTORS	D34CA2J
	3/4	56	NONE	BALL	1.25	MARATHON	C175
	3/4	56	NONE	BALL	1.25	US MOTORS	D34C2J
	1	56	AUTO	BALL	1.15	CENTURY	C682
	1	56	AUTO	BALL	1.15	MARATHON	C182
	1	56	AUTO	BALL	1.15	US MOTORS	D1CA2JH+
	1	56	NONE	BALL	1.15	MARATHON	C181
	1	56	NONE	BALL	1.15	US MOTORS	D1C2JH+
	1 1/2	56H	AUTO	BALL	1.15	CENTURY	C688+
	1 1/2	56H	AUTO	BALL	1.15	MARATHON	C186+
1 1/2	56H	AUTO	BALL	1.15	US MOTORS	D32CA2JH+	
1 1/2	56H	NONE	BALL	1.15	MARATHON	C185+	
1 1/2	56H	NONE	BALL	1.15	US MOTORS	D32C2JH+	



4688

*56Z frame, 5/8" x 2 3/8" shaft
 +56H base

OIL BURNER MOTORS

sleeve bearing, reversible, split phase, totally enclosed, manually protected



EL2005

HP	RPM	VOLTS	AMPS	FRAME	CENTURY
1/8	1725	115	2.5	48N	XEL2004
1/8	1725	115	2.5	48N	EL2005
1/7	3450	115	2.5	48M	EL2002
1/7	3450	115	1.7	48M	OBK6002V1 +*
1/6	1725	115	3.2	48N	XEL2014
1/6	1725	115	3.2	48N	EL2014
1/6	3450	115	2.7	48M	EL2012
1/4	1725	115	3.7	48N	EL2024
1/4	3450	115	3.4	48N	EL2022*
1/3	3450	115/230	4.2/2.1	48N	OL2032*
1/2	3450	115/230	6.2/3.1	48N	OL2052D*
1/8	1725	115	2.5	48N	EL2004V1
1/8	3450	115	2.8	48N	OL2002*
1/3	1725	115	4.3	48N	OL2034*
1/3	1725	115	4.3	48N	EL2034
1/2	3450	115/230	7.3/3.7	48N	OL1052DS*
3/4	3450	115/208-230	10.0/5.0	48CZ	OL1072D*

*open shaft end
+ball bearing & auto overload

SPLIT PHASE EVAPORATIVE COOLER MOTORS

all copper winding (115V), 56Z frame, auto protector



SV2034

HP	RPM	VOLTS	SPEED	CENTURY
1/3	1725	115	1	VB2034
1/3	1725/1140	115	2	SVB2034
1/2	1725	115	1	VB2054
1/2	1725/1140	115	2	SVB2054
1/2	1725/1140	230	2	SVB2054H
3/4	1725	115	1	VB2074
3/4	1725/1140	115	2	SVB2074
3/4	1725/1140	230	2	SVB2074H
1	1725/1140	115	2	SV2104*
1	1725/1140	230	2	SV2104H*

*capacitor start motors

COMMERCIAL LAUNDRY DRYER MOTORS (SINGLE PHASE)

56Z frame, auto overload, special threaded shaft, replaces Heubsch dryer motor



X602

HP	RPM	VOLTS	BEARING	MARATHON
1/3	1725	115/208-230	ball	X601
1/2	1725	115/208-230	ball	X602
3/4	1725	115/208-230	ball	X603

AIR COMPRESSOR MOTORS

single phase, sleeve bearing

HP	RPM	VOLTS	AMPS	ROTATION	FRAME	OVERLOAD	US	MARATHON	CENTURY
1/2	3600	115/230	9.6/4.8	CWLE	56	MANUAL	---	---	B685
3/4	3600	115/230	12.5/6.75	REV	56	MANUAL	---	---	CP1072L
1	3600	115/230	12.0/6.0	REV	56	MANUAL	---	---	CP1102L
1 1/2	3600	115/230	15.0/7.5	REV	56	MANUAL	---	---	CP1152L
2	3600	115/230	24.0/12.0	REV	56	MANUAL	---	---	CP1202L
3	3600	208-230	15.4-15.0	REV	56	MANUAL	---	---	CP1302L
3	3600	230	15.0	CWLE	56	MANUAL	---	---	B385
3	1800	115/230	34.0/17.0	REV	184T	NONE	---	---	V201
SPL	3450	230	15.0	REV	56H	MANUAL	---	---	CP1502LV1
5	3600	208-230	22.0	CWLE	56HZ	MANUAL	---	---	B386
5	3450	208-230	22.0	CWLE	56Y	MANUAL	---	---	B384*
5	3600	208-230	22.0	REV	56HZ	MANUAL	---	---	CP1502L
5	1800	230	22.0	REV	184T	NONE	D5C2K	---	V208 or V209
7 1/2	1800	230/460	32.0/16.0	REV	215T	NONE	---	---	V305
10	1800	230/460	38.0/19.0	REV	215T	NONE	---	---	V303
7 1/2	3600	208-230	34.3-31.0	REV	184T	NONE	---	1108	---
7 1/2	3600	208-230	40.0-37.0	REV	213T	NONE	---	1105	---
7 1/2	1800	208-230	37.2-34.5	REV	215T	NONE	---	1115	---
10	1800	208-230	49.0-44.0	REV	215T	NONE	---	1116	---



CP1502LV1

*7/8" diameter shaft, 4 1/2" shaft height

COMMERCIAL HVAC, 3 PHASE MOTORS

resilient base, 200-230/460V, ball bearing, ODP, auto protected

HP	RPM	FRAME	SERVICE FACTOR	CENTURY
1/2	1725	56	1.25	H850
3/4	1725	56	1.25	H851
1	1725	56H	1.15	H852
1 1/2	1725	56H	1.15	H853
1 1/2	3450	56H	1.3	H843
2	1725	56HZ	1.15	H854
2	3450	56H	1.2	H844
3	1725	56HZ	1.15	H855



H850

REPLACEMENT BLADES

12" Fan Blade #14393 14" Fan Blade #97-00-6971



F0510B2497



PD9317

POWER VENT REPLACEMENTS

5" diameter, shaded pole, 115V

AMPS	RPM	SHAFT DIMENSION	BODY LENGTH	MODEL
3.4	1050	1/2" x 1 7/8"	2 1/4"	F0510B2497*
3.4	1050	1/2" x 3"	2 1/4"	PD9316
4.3	1050	1/2" x 2 1/2"	2 5/8"	PD9317
3.6	1050	1/2" x 3 1/2"	2 1/4"	PD2957



PD2957

*includes three lugs to replace triangle mount

OEM REPLACEMENTS

BROAN (120V)



A



B



C



D



E



F



G

REPLACES	FIGURE	RPM	AMPS	MOTOR DIAMETER	ROTATION	SHAFT DIMENSION	MODEL
99080150, 99080242, 7173-0243, JA2M284	A	1360	1.2	3.3"	CCW	5/16" x 1 3/8"	97-00-8584
JA2Y044, L300 LoSone	B	1750	2.6	3.3"	CCW	3/8" x 1 1/4"	99-08-0485
363, 383 LoSone, JA2P145N	C	1650	1.8	3.3"	Both	1 3/8" x 5/16" x 1 3/8"	99-08-0152
362 LoSone, JA2N153, 7173-0192	C	1500	1.03	3.3"	Both	1 3/8" x 5/16" x 1 3/8"	99-08-0151
99080149, 99080241, 7163-4981, JA2C291N, 360	A	1200	0.7	3.3"	CCW	5/16" x 1 3/8"	97-00-8583
315, 317 LoSone Ventilators, 99080050, 99080048, 7163-9263	D	1600	0.87	3.3"	CW	5/16" x 1 5/8"	97-00-8342
S120L, S130, HS130, HS120L, MS130, MS120L, MHS120L, S120FL, 7173-0237, JA2M373	A	1500	0.7	3.3"	CW	5/16" x 7/8"	99-08-0274
JA2P258, 99080460, 99080177, JA2N137, JA2N139, JA2N173, JA2P194, JA2P194N, 7163-5779	E	1700	1.6	3.3"	CW	5/16" x 1 1/4"	99-08-0596
L250-A, L250L-A, L250MG-A, JA2Y045	B	1650	2.0	3.3"	CCW	3/8" x 1 1/4"	99-08-0484
365-B, DA3E278, 7151-3160	F	1200	3.0	5"	CW	1/2" x 2 5/8"	99-08-0178
340, 343, 350, 353 Attic Vent, 99080123, 99080129, 99080171, 99080206, 99080209, 99080212, 99080210, F0510B2513, 3229137, 7151-2775, A0510B2159, A0510B2220, 99080263, A0510B2006, A0510B2055, 99080237, A0510B2116, A0510B2118, A0510B2157	G	1140	4.3	5"	CW	1/2" x 2 7/16"	PD9317
341, 355, 358 Attic Ventilators, 99080130, 99080210, 99080267, 99080239, A0516B2019, A0516B2158, A0516B2117, A0510B2221, F0516B2514, 322P138							



FB3154



H978



H980



H979



X235

CARRIER (3-PHASE)



X251

REPLACES	HP	RPM	VOLTS	AMPS	SHAFT DIMENSION	CENTURY	MARATHON
HD46GL230	3/4	1140	208-230	3.8	1/2" x 3"	OCA3076	---
HD46GK460	3/4	1140	460	1.9	1/2" x 3"	OCA3076H	---
HD52VE214	1	1140	200-230/460	6.6-6.0/3.0	5/8" x 2 7/8"	---	X235
HD52AK652	SPL	1140	208-230/460/575	5.5/2.8-3.4	5/8" x 3 1/2"	H978	---
HD56FK651	SPL	1725	208-230/460	3.6/1.8	5/8" x 2"	FB3154	---
HD60FK651	3	1725	208-230/460	10.6/4.8	7/8" x 2 5/16"	H980	---
HD60FK652	5	1725	208-230/460	15.0/7.4	7/8" x 2 5/16"	H979	---
HD60AZ660	5	3600	208-230/460	13.5-12.4/6.2	7/8" x 2 1/4"	---	X251



3402



OCD1056



OCA1036



OCA1056



X242



FEH1056SF

CARRIER

PSC, 5 5/8" diameter

REPLACES	HP	VOLTS	RPM/SPEED	ROTATION	MARATHON	FASCO	US	CENTURY
HC33GE233	1/10	208-230	1100	CWLE	---	---	3402	---
HC33GE208	1/6	208-230	1500	CWLE	---	---	3405	OCA1014
F48SD6MA4, F48SDSMA22, F48SD6MA11, F48SD6MA6, F48SD6MA16	1/5	208-230	1050/2	REV	--	---	---	OCA10206A+
---	1/3	208-230	1075/2	REV	---	---	---	OCA1036
HC44SL230	1/2	230	1100	CWSE	---	---	---	OCD1056
---	1/2	200-230/460	1050	REV	---	---	---	OCA1056+
HC44VL463A	1/2	460	1050	REV	---	D802	---	FEH1056SF
HC52AL230	1	208-230	1000/3	REV	X242	---	---	---



OCA10206A

+lug mount

COPELAND

PSC, CWLE

REPLACES	HP	VOLTS	RPM	FRAME	BEARING	CENTURY
050-0251-00	1/6	230	1400/1625*	42Y	sleeve	OCP0251
050-0250-00	1/4	230	1400/1625*	42Y	sleeve	OCP0250
050-0108-00	1/3	208-230	1625	48Y	ball	OCP0108



OCP0250

*50/60 Hz

COPELAND (50 WATT UNIT BEARING)

1550 RPM

REPLACES	VOLTS	ROTATION	SHAFT DIMENSION	CENTURY	FASCO
050-0244-01	115	CW	3/8" x 1 1/2"	258	D578
050-0244-00	230	CW	3/8" x 1 1/2"	260	D580
050-0264-00	230	CCW	5/16" x 2 1/2"	276	---
050-0244-02	460	CW	3/8" x 1 5/8"	290	---



290

FIRST COMPANY

208-230V, PSC, 5" diameter

REPLACES	HP	RPM/SPEED	AMPS	SHAFT DIMENSION	FASCO	CENTURY
M8	1/8	1500/2	1.3	6 11/16" x 1/2" x 6 11/16"	---	OFC1004
M10	1/5	1550/2	2.8	8" x 1/2" x 8"	D258	---
M10	1/4	1625/2	1.8	7 11/16" x 1/2" x 7 11/16"	---	OFC1024



OFC1004

FRYMASTER

exact replacement for Frymaster 806-4504 SP, Fasco 7002-0898, 7002-2656 and Kooltronics 807-1245

HP	RPM	AMPS	BEARING	PEMS
115-50-60Hz	2670/3240	0.9/0.8	SEALED BALL	7058-1732*



7058-1732

*cooling fan on drive end to reduce bearing temperatures

GOODMAN

5 5/8" diameter, PSC, CWSE



OGD1016

REPLACES	HP	RPM	VOLTS	SHAFT DIMENSION	CENTURY
B13400-251	1/6	1075	208-230	1/2" x 3 3/4"	OGD1016
B13400-247	1/4	1075	208-230	1/2" x 3 1/4"	OGD1026

GREENHECK FAN

PSC, open self cooled, ball bearing, capacitor included



X260

REPLACES	HP	RPM	VOLTS	FRAME	FL AMPS	SHAFT DIMENSION	MODEL
300008	1/8	825	115	48Y	2.1	1/2" x 2 1/2"	X261
300010	1/6	1140	115	48Y	2.2	1/2" x 2 1/2"	X260

HEATCRAFT/BOHN & LARKIN COIL

shaded pole, 1550 RPM



D1101

REPLACES	HP	VOLTS	AMPS	ROTATION	FASCO
5034LS, 5008SS	1/20	115	2.1	CW	D1124
5034MS, 5008TS	1/15	230	1.1	CW	D1126
253-1194	1/20	115	1.9	CCW	D1101
253-1195	1/20	208-230	1.15	CCW	D1103

HEATCRAFT/BOHN & LARKIN COIL

PSC, capacitor included, 1550 RPM



D1123

REPLACES	HP	VOLTS	AMPS	ROTATION	PEMS	FASCO
25308601	1/16	208-230	0.4	CW	---	D1122
25309101	1/15	208-230	0.5	CCW	---	D1123
7071061, 2530101	1/15	208-230	0.4	CCW	---	D1125
---	1/12	115/230	1.1/0.6	REV	PD1127*	9721

*PD1127 replaces D1101, D1103, D1124, D1125, D1126, 572, 573, 574, 575, 9701 and D1127

HEIL-QUAKER

208-230V, PSC, belly band mount



D1071

REPLACES	HP	RPM	SHAFT DIMENSION	DIAMETER	CENTURY	FASCO
HQ1052662EM HQ1050703	1/6	1100	1/2" x 2 1/8"	5.1"	---	D1071
HQ1054573 HQ106494 HQ1050703	1/3	1120	1/2" x 2"	5.6"	645	---

IEC (INTERNATIONAL ENVIRONMENTAL CORPORATION)

HP	VOLTS	RPM/SPEED	ROTATION	SHAFT DIMENSION	CROSS REFERENCE	MODEL
1/30	115/127	1100/3	CWSE	1/2" x 9"	700216-92	D1045
1/30	265	1075/3	CWSE	1/2" x 7 1/8"	705563-07	D1053
1/20	208/230	1075/3	CWSE	1/2" x 7 1/8"	705563-14	D1047
1/20	265	1075/3	CWSE	1/2" x 7 1/8"	705563-08	D1049
1/20	277	1075/3	CWSE	1/2" x 7 1/4"	700215-45	D1048
1/12	115/127	1375/3	DBL	9 1/8" x 1/2" x 9 1/2"	700215-16	D1055
1/6	115/127	1450/3	DBL	8 3/4" x 1/2" x 9"	700215-17	D1059
1/4	115	970/3	CWSE	1/2" x 8"	700215-21	D1044



D1043

KRACK (3 PHASE)

6 1/2" diameter, ball bearing, 208-230/460V

REPLACES	HP	RPM	ENCLOSURE	SHAFT DIMENSION	CENTURY
11096 1503752	1/2	1100	enclosed	5/8" x 2"	OKR1096
11503 151437	1	850	open	5/8" x 3 1/4"	OKR1503



OKR1096

LIEBERT

208-230/460V, ball bearing, resilient base, 48Y frame

REPLACES	HP	RPM	SHAFT DIMENSION	MARATHON
5K36PN294S, B1640	1/3	1140	1/2" x 1 1/2"	X259



X259

LOREN COOK

3.3" diameter, 115V, sleeve bearing

REPLACES	HP	RPM/SPEED	AMPS	ROTATION	FASCO
GC/GN142/144 7173-1580	1/50	1150/2	1.2, 0.7	CWSE	D1100
5-10 7163-6714	1/50	1150/1	0.9	DOUBLE SHAFT	D1104
GC140 615049 7163-7818	1/65	1190/1	0.6	CWSE	D1117



D1100

OEM REPLACEMENTS



P01871



P4093

MESTEK

OEM direct replacement for Beacon-Morris, Dayton, Sterling, Trane and others. 5" diameter, CWSE

REPLACES	HP	RPM	AMPS	TYPE	SHAFT DIMENSION	BODY LENGTH	PEMS
7151-0101, J31R01871	1/20	1050	1.7	SHADED POLE	3/8" DIA. x 3"	3 1/4"	P01871 NEW
A0524A2161, J31R01872	1/15	1050	2.5	SHADED POLE	3/8" DIA. x 3"	3 1/4"	P01872 NEW
A0820B2597, J3104093	1/4	1075	4.7	PSC	1/2" DIA. x 3 1/4"	4 1/8"	P4093* NEW
A0828B2596, J31R04093	1/3	1075	5.6	PSC	1/2" DIA. x 3"	4 3/8"	P4094* NEW

*capacitor included

NESBITT REPLACEMENT BLOWER MOTORS*

PSC, 850 RPM, 1.0 service factor



C031

HP	VOLTS	BEARING	SHAFT DIMENSION	CENTURY
1/12	115	BALL	16 5/8" x 3/4" x 16 5/8"	C031
1/8	115	SLEEVE	6" x 1/2" x 6"	C032
1/6	230	BALL	20" x 3/4" x 20"	C035
1/6	115	BALL	21 1/2" x 3/4" x 21 1/2"	C034
1/6	115	BALL	5/8" x 2"	C033
1/3	115	BALL	23" x 3/4" x 23"	C036

*Nesbitt replacement wheels on page 30



NUTONE (115V)



D540

REPLACES	RPM	AMPS	MOTOR DIAMETER	ROTATION	SHAFT DIMENSION	MODEL
QT110, QT100L NO HEX, QT100LH, QT100LM, QT100LMH, 86322000, 86322-000, JA2C394N	1500	0.6	3.3"	CW	1/4" x 2 1/4"	D540
8663RP, 8673RP, 8664RP (86933-000), 86933000, JA2B104N	1550	1.2	3.3"	CCW	1/4" x 1"	86933
RF59N, RF69N, 89747000, 89747-000, DA2E123N	1600	6.6	5"	CCW	3/8" x 2"	89747
QT90T, 86323000, 86323-000, JA2B089N	1180	0.61	3.3"	CW	1/4" x 1"	86323
RF59P, NRPSC BR RF69NR, RF79P, GF1200N, D0810B2779, 87406-000, 87406000	1725	4.1	5"	CW	3/8" x 2 1/4"	87406
683 Exhaust Fan, 86652000, 86652-000, JA2B099N	1285	0.7	3.3"	CCW	1/4" x 1"	86652
67176, 32997, JA25034N, JBK016N	1550	3.2	3.3"	CCW	5/16" x 1 3/8"	D1107
23405, 23388	1550	0.6	3.3"	CCW	1/4" x 1 1/4"	D1109

RHEEM

sleeve bearing, PSC

REPLACES	HP	RPM/SPEED	VOLTS	SHAFT LENGTH	CENTURY
51-23101-05	1/8	825/2	208-230	2.6"	ORM1008V1
51-23055-12	1/5	825/1	208-230	3.6"	765
51-23103-06	1/4	825/2	208-230	3.4"	ORM1028
51-23103-07	1/3	825/2	208-230	2.1"	ORM1038
51-23103-08	1/2	825/1	208-230	3.25"	ORM1058
51-21853-82	1/5	1075/1	208-230	4.25"	ORM10206
51-21185-01	1/4	1075/1	208-230	5.5"	ORM1026
51-20688-01	1/3	1075/1	208-230	5.5"	ORM1036
51-28873-01	1/2	1075/4	115	3.5"	ORM1056
51-22859-01	3/4	1075/4	115	3.75"	ORM1076



ORM1008V1

RV PRODUCTS

115V, 5" diameter



D1092



ORV4537



ORV4538



ORV4539

REPLACES	HP	RPM/SPEED	SHAFT DIMENSION	FASCO	CENTURY
F42C40A61	1/5	1650/3	2 9/16" x 1/2" x 4 1/16"	---	ORV4540
6747A311	1/4	1625/1	5 1/4" x 1/2" x 5"	---	ORV4537
6757B311	1/4	1625/2	5 11/16" x 1/2" x 5 11/16"	---	ORV4538
F42B50A01	1/3	1675	7 1/8" x 1/2" x 3 1/2"	---	ORV4539
7184-0156, 1468-306	1/3	1675/2	7 15/16" x 1/2" x 3 9/16"	D1092	---



ORV4540

TECUMSEH



OTC6004



OTC1862



9487

REPLACES	HP	RPM	VOLTS	DIAMETER	TYPE	CENTURY
810S050A99	1/15	1550	230	5"	SHADED POLE	OTC6001
810S037B01	1/20	1500	230	5"	SHADED POLE	OTC6004
TFM1862	1/4	1625	230	5 5/8"	PSC	OTC1862*
TFM1864	1/4	1625	380-420/460	5 5/8"	PSC	OTC1864*
TFM262, 810E026	1/2	1550	230	3.3"	SHADED POLE	9487



OTC6001

*with lugs

OEM REPLACEMENTS



D1050



D895



D2850



9608

TRANE

PSC, CW

REPLACES	HP	RPM	VOLTS	AMPS	DIA.	SHAFT DIM.	CENTURY	FASCO
X70500149-02 MOT-1875	1/20	1100 (3 SPEED)	115	0.6-0.3-0.23	5"	1/2"	9608 ^	---
WW94X236SP, WW94X936PSC	1/8	1550	230	1.1	5"	1/2" x 3"	OTR4513+	D1050
MOT6363	1/8	1650	208-230	0.8	5 5/8"	1/2" x 1 1/2"	---	D895
MOT3771 MOT5717 X70670706010 X70671180017	1	1125	208-230/460	4.6/2.3	5 5/8"	1/2" x 3 1/2"	---	D2850*
MOT9192 MOT9188 X7067165301 X7067165601 X70671654 X7067165201	1	1125	208-230/460	4.6/2.3	5 5/8"	5/8" x 3 3/4"	---	3D012 D2852 ^ *

*models rated for 50Hz as 3/4 HP, 950 RPM, 200/380-415 volts
 ^ reversible
 +0.9 amps

TRIANGLE

single speed, ball bearing

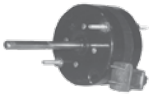


OTEB2054A

REPLACES	HP	RPM	VOLTS	TYPE	CENTURY
S56A62A97 S56A19A97 S56A33A97	1/2	1725	115	SPLIT PHASE	OTEB2054A

VENTROLA/SEARS

3.3" diameter, totally enclosed, CWSE, 0.5 amps



PE498

REPLACES	HP	RPM	VOLTS	SHAFT DIMENSION	CENTURY
Ventrola E498-1 Sears 569	1/100	1250	115	5/16" x 3 11/16"	PE498

WILLIAMS

OEM direct replacement for Lear Siegler and Williams wall heaters



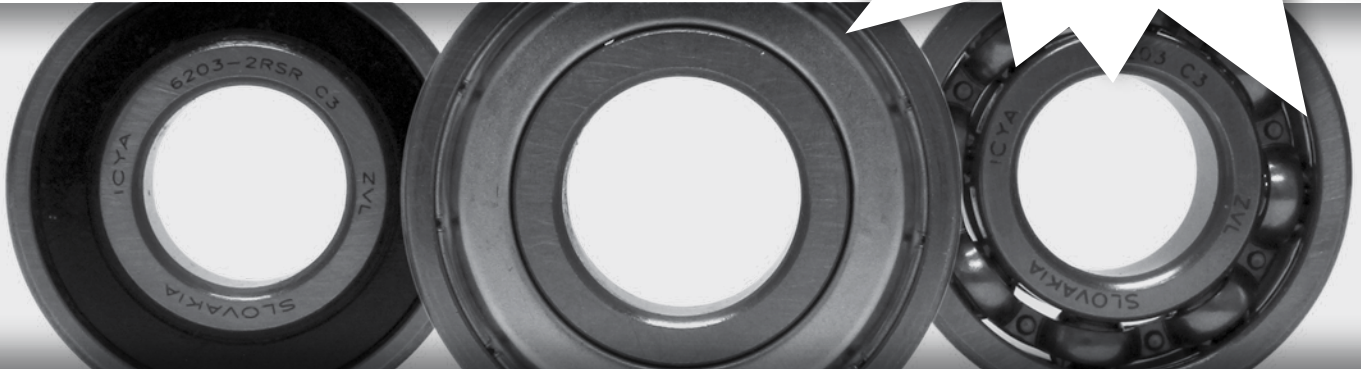
P4086

REPLACES	HP	RPM	AMPS	SHAFT DIMENSION	PEMS
DE3D180, 7151-2142	1/30	1050/2 SPEED	1.7	1/2" DIA. x 2"	PE4086 NEW



ZVL Ball Bearings

**PEMS...
Your New Source
For Bearings.
In Stock Now!**



Why use ZVL Ball Bearings?

- *Excellent European quality bearings at a competitive price.*
- *ZVL uses a method of roll forming the bearing raceways which produces a work hardened surface, thereby increasing the strength of our bearing rings over traditional machining operations. Both SKF & the Japanese bearing manufacturers have visited ZVL plants to view this technology.*
- *Inner and outer raceways are ground and honed to achieve a precise surface finish.*
- *ALL bearings are 100% noise checked to industry standards.*
- *Grade #10 balls are utilized.*
- *Sealed bearings are pre-packed with Chevron SRI #2 grease which is a widely-known and accepted grease in the electric motor industry. This grease is primarily noted for its high speed characteristics and low noise operation.*
- *Bearings are available in a C3 fit as sealed, shielded, or open.*
- *All bearings are designed and manufactured in accordance to ABMA and ISO standards.*

~ *Produce bearings for several major automotive manufacturers all over the world.*

~ *Supplying ball and tapered roller bearings to Allison Transmission Division for almost two decades with 100% on time delivery and zero defects.*

~ *Major ZVL accounts around the globe: Volkswagen, Skoda, John Deere, Daewoo-Avia Trucks, Tatra Trucks, Caterpillar, SEW Eurodrive, Siemens, General Electric*

FLEXIBLE MOUNTING ADAPTERS FOR BLOWER MOTORS



FM55

DIAMETER	BOLT CIRCLE	ROTOM	FASCO
5"	9" & 10.18"	---	FM50
5.5"	9" & 10.18"	92-A8555	FM55
5" & 5.5"	9" & 10.18"	92-A8617	---

3 ARM DIRECT DRIVE BLOWER MOUNTING KITS



KIT 317

DIAMETER	BOLT CIRCLE	CENTURY	FASCO
5"	9"	1386	---
5"	10"	---	Kit 315
5 5/8"	10"	1479	Kit 317
5 5/8"	11"	1495	---

ANTI-WINDMILL BRAKE

used to stop wind-milling in the wrong direction. Shaft will rotate the correct direction freely



AW-1/2

BORE SIZE	PEMS
1/2"	AW-1/2
5/8"	AW-5/8

SOLID STATE SPEED CONTROL



B



C



D



A

VOLTS	AMPS	FIGURE	REPLACES CENTURY	PEMS
115	3.0	A	---	A177-1001
115	4.0	B	1234A	A177-1004
115	2.5	C	---	K177-1002
115	5.0	C	1233A	K177-1005
115	6.0	C	---	K177-1006
115	8.0	C	---	K177-1008
115	10.0	D	1408A	K177-1010
115	15.0	D	---	K177-1015
240	2.5	C	---	K177-2002
240	5.0	C	1407A	K177-2005
240	8.0	C	---	K177-2008
240	10.0	D	---	K177-2010
277	6.0	C	---	K177-2706
277	15.0	D	---	K177-2715

CONDENSER FAN MOTOR RAIN SHIELDS

SHAFT DIAMETER	RAIN SHIELD DIAMETER	MODEL
1/2"	7"	8860-6016
5/8"	7"	8860-6000



8860-6016

RUBBER MOUNTING RINGS

with steel bands (2 pk)

ROUND OUTSIDE DIAMETER	HEX INSIDE DIAMETER	FASCO	MODEL
2 1/2"	1 9/16"	Kit 184	1182A
2 1/4"	1 9/16"	Kit 183	1220A
1 3/4"	1 1/8"	---	1255A



KIT 184

SHAFT BUSHINGS

INSIDE DIAMETER	OUTSIDE DIAMETER	MODEL (SINGLE)	MODEL (4 PK)
1/4"	5/16"	0006-3273	Kit 240
1/4"	3/8"	J177-9300	---
5/16"	3/8"	0006-3314	Kit 244
5/16"	1/2"	J177-9304	---
3/8"	1/2"	0006-3274	Kit 242
1/2"	5/8"	8539-6005	Kit 246
5/8"	3/4"	J177-9483	---
3/4"	1"	027502-03	---



KIT 240

RUBBER MOUNTING GROMMETS



8684-6000



8684-6008



KIT 150

DESCRIPTION	FIGURE	MODEL
Mounting grommet for 1/2" slot	---	8684-6000
Mounting grommet for 3/4" slot (with steel sleeve)	---	8684-6008
Mounting grommet for 1/2" slot---Qty. 4	---	Kit 150
Male/Female 8/32 Thd 3/8" long, body 9/16" diameter x 1/2" long	A	B177-0001
Male/Male 8/32 Thd 3/8" long, body 9/16" diameter x 1/2" long	B	B177-0002
Male/Female 10/32 Thd 3/8" long, body 9/16" diameter x 1/2" long	A	B177-0003
Male/Male 10/32 Thd 3/8" long, body 9/16" diameter x 1/2" long	B	B177-0004
Male/Male 1/4" x 20" Thd 1/2" long, body 1" diameter x 1/2" long	B	B177-0006
Male/Male 5/16" x 18" Thd 9/16" long, body 1" diameter x 1" long	B	B177-0007
Female/Female 5/16" x 18" Thd, body 1" diameter x 1" long	C	B177-0008
Male/Male 5/16" x 18" Thd 5/8" long, body 1 1/4" diameter x 3/4" long	B	B177-0009
Male/Male 5/16" x 18" Thd 3/4" long, body 2" diameter x 3/4" long	B	B177-0010



A



B



C

ACCESSORIES

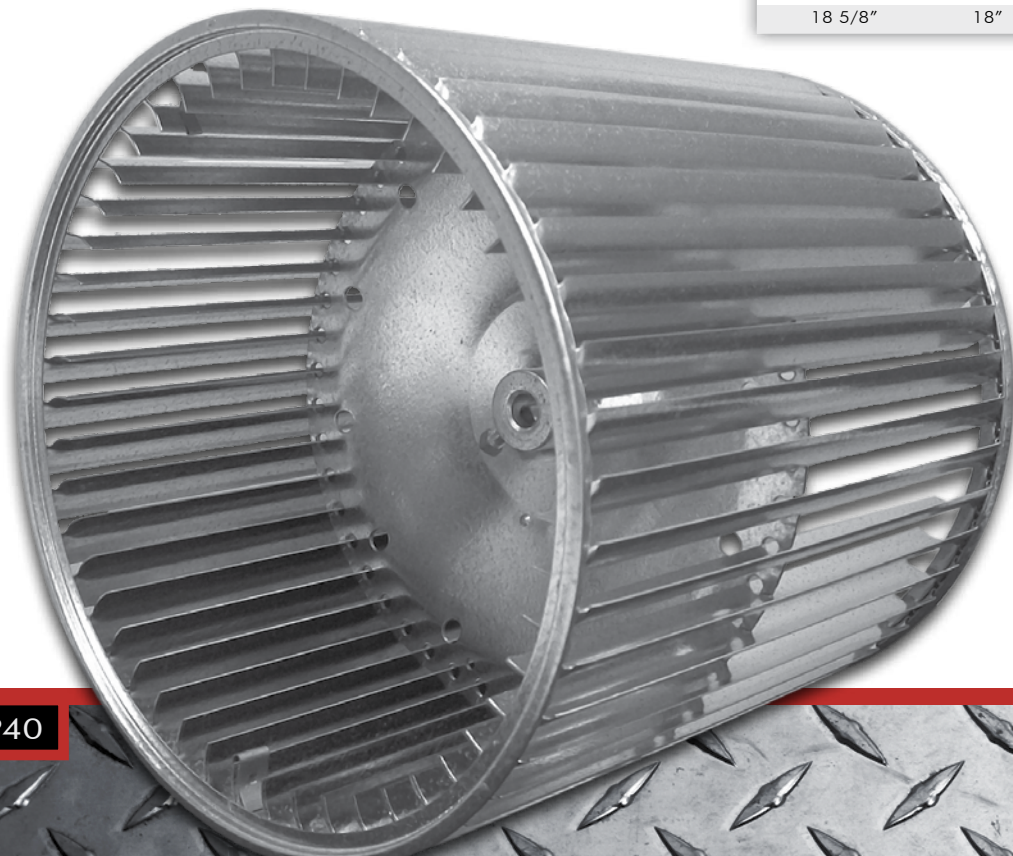
DIRECT DRIVE DOUBLE INLET BLOWER WHEELS

OUTSIDE DIAMETER	WIDTH	BORE SIZE	ROT.	PEMS DIRECT DRIVE
6 5/16"	6 3/8"	3/4"	CW	028958-27*
6 5/16"	6 3/8"	3/4"	CCW	028958-28*
7 1/2"	5"	3/4"	CW	028958-34*
7 1/2"	5"	3/4"	CCW	028958-35*
7 1/2"	6 3/8"	3/4"	CW	028958-36*
7 1/2"	6 3/8"	3/4"	CCW	028958-37*
9 1/2"	4 1/2"	1/2"	CW	013334-01
9 1/2"	6"	1/2"	CW	013335-01
9 1/2"	7 1/8"	1/2"	CW	013336-02
9 1/2"	7 1/8"	1/2"	CCW	013336-03
9 1/2"	8"	1/2"	CW	013337-01
9 1/2"	8"	1/2"	CCW	013337-03
9 1/2"	9 1/2"	1/2"	CW	013332-01
9 1/2"	9 1/2"	1/2"	CCW	013332-03
10 3/4"	10 1/2"	1/2"	CW	2-6022
10 5/8"	6"	1/2"	CW	013326-01
10 5/8"	6"	1/2"	CCW	013326-02
10 5/8"	7 1/8"	1/2"	CW	013325-01
10 5/8"	7 1/8"	1/2"	CCW	027102-04
10 5/8"	8"	1/2"	CW	013324-01
10 5/8"	8"	1/2"	CCW	013324-02
10 5/8"	9 1/2"	1/2"	CW	013323-01
10 5/8"	9 1/2"	1/2"	CW	013317-01
10 5/8"	10 5/8"	1/2"	CW	013322-03
10 5/8"	10 5/8"	1/2"	CW	013316-02
10 5/8"	10 5/8"	1/2"	CCW	013316-06
11 3/4"	8"	1/2"	CW	026940-07
11 3/4"	8"	1/2"	CCW	026940-08
11 3/4"	9 1/2"	1/2"	CW	026940-09
11 3/4"	9 1/2"	1/2"	CCW	026940-10
11 3/4"	10 5/8"	1/2"	CW	026941-11
11 3/4"	10 5/8"	1/2"	CCW	026941-12
12 5/8"	9 1/2"	1/2"	CW	013693-25
12 5/8"	12 5/8"	1/2"	CW	015565-07

*Nesbitt Blower Wheels

BELT DRIVE DOUBLE INLET BLOWER WHEELS

OUTSIDE DIAMETER	WIDTH	BORE SIZE	ROT.	PEMS DIRECT DRIVE
9 1/2"	6"	3/4"	both	008666-12
9 1/2"	7 1/8"	3/4"	both	008621-12
9 1/2"	9 1/2"	3/4"	both	008519-12
9 1/2"	9 1/2"	1"	both	008519-16
10 5/8"	4 1/2"	3/4"	both	012237-12
10 5/8"	6"	3/4"	both	008364-12
10 5/8"	7 1/8"	3/4"	both	008363-12
10 5/8"	8"	3/4"	both	008361-12
10 5/8"	9 1/2"	3/4"	both	008362-12
10 5/8"	10 5/8"	5/8"	both	008360-10
10 5/8"	10 5/8"	3/4"	both	008360-12
10 5/8"	10 5/8"	1"	both	008360-16
12 5/8"	6"	1"	both	008971-16
12 5/8"	9 1/2"	3/4"	both	027575-15
12 5/8"	9 1/2"	1"	both	008507-16
12 5/8"	9 1/2"	1 3/16"	both	008507-58
12 5/8"	9 1/2"	1 7/16"	both	008507-23
12 5/8"	11 1/8"	1"	both	009867-16
12 5/8"	12 5/8"	5/8"	both	008403-10
12 5/8"	12 5/8"	3/4"	both	008403-01
12 5/8"	12 5/8"	1"	both	008403-16
12 5/8"	12 5/8"	1 3/16"	both	008403-93
12 5/8"	12 5/8"	1 7/16"	both	008403-79
15"	9 1/2"	1"	both	009548-16
15"	9 1/2"	1 3/16"	both	009548-70
15"	9 1/2"	1 7/16"	both	009548-23
15"	11 1/8"	1"	both	008418-16
15"	11 1/8"	1 3/16"	both	008418-77
15"	11 1/8"	1 7/16"	both	008418-80
15"	12 5/8"	1"	both	008746-16
15"	15"	1"	both	008276-16
15"	15"	1 3/16"	both	017671-37
15"	15"	1 7/16"	both	008276-72
18 5/8"	13 1/2"	1"	both	008659-16
18 5/8"	13 1/2"	1 7/16"	both	008659-60
18 5/8"	18"	1"	both	008658-16
18 5/8"	18"	1 3/16"	both	008658-74
18 5/8"	18"	1 7/16"	both	008658-87



008403-16

CONDENSER FAN BLADES

four wing interchangeable hub style

DIAMETER	PITCH	ROTATION	CARTON QTY.	MODEL
14"	23	CW	2	4C1423CW
14"	23	CCW	2	4C1423CCW
14"	33	CW	2	4C1433CW
14"	33	CCW	2	4C1433CCW
16"	23	CW	2	4C1623CW
16"	23	CCW	2	4C1623CCW
16"	33	CW	2	4C1633CW
16"	33	CCW	2	4C1633CCW
18"	27	CW	2	4C1827CW
18"	27	CCW	2	4C1827CCW
18"	33	CW	2	4C1833CW
18"	33	CCW	2	4C1833CCW
20"	27	CW	2	4C2027CW
20"	27	CCW	2	4C2027CCW
20"	33	CW	2	4C2033CW
20"	33	CCW	2	4C2033CCW
22"	27	CW	2	4C2227CW
22"	27	CCW	2	4C2227CCW
24"	27	CW	2	4C2427CW
24"	27	CCW	2	4C2427CCW
26"	24	CW	2	4C2624CW
26"	27	CW	2	4C2627CW
26"	33	CW	2	4C2633CW



4C2227CW

INTERCHANGEABLE HUBS

BORE SIZE	MODEL
5/16"	H5
3/8"	H6
1/2"	H8
5/8"	H10



H10



35DVR



MA-12815



Municap 200



KIT 6001

DUAL VOLTAGE OVAL RUN CAPACITORS

MFD	VOLTS	OVAL MODEL	ROUND MODEL
4 MFD	370/440	4DV	---
5 MFD	370/440	5DV	5DVR
7.5 MFD	370/440	7.5DV	7.5DVR
10 MFD	370/440	10DV	10DVR
12.5 MFD	370/440	12.5DV	12.5DVR
15 MFD	370/440	15DV	15DVR
17.5 MFD	370/440	17.5DV	17.5DVR
20 MFD	370/440	20DV	20DVR
25 MFD	370/440	25DV	25DVR
30 MFD	370/440	30DV	30DVR
35 MFD	370/440	35DV	35DVR
40 MFD	370/440	40DV	40DVR
45 MFD	370/440	45DV	45DVR
50 MFD	370/440	50DV	50DVR
30/5 MFD	370/440	30/5DV	30/5DVR
35/5 MFD	370/440	35/5DV	35/5DVR
40/5 MFD	370/400	40/5DV	40/5DVR
45/5 MFD	370/440	45/5DV	45/5DVR
2.5-67.5 MFD	370/440	---	Municap 200
Capacitor Mounting Kit for 4 to 15DV		Kit 6001	
Digital Capacitor Tester		CAP1500P	

FASCO CONTACTORS



H230A

POLES	AMPS	COIL VOLTAGE	FASCO
2	30	24	H230A
2	30	120	H230B
2	30	240	H230C
2	40	24	H240A
2	40	120	H240B
2	40	240	H240C
3	30	24	H330A
3	30	120	H330B
3	30	240	H330C
3	40	24	H340A
3	40	120	H340B
3	40	240	H340C
3	50	24	H350A
3	50	120	H350B
3	50	240	H350C
3	60	24	H360A
3	60	120	H360B
3	60	240	H360C
3	75	24	H375A
3	75	120	H375B
3	75	240	H375C
3	90	24	H390A
3	90	120	H390B
3	90	240	H390C



Your Complete Electric Motor Source!

CALIFORNIA • COLORADO • CONNECTICUT • FLORIDA • ILLINOIS • MARYLAND
MICHIGAN • MINNESOTA • MISSOURI • NORTH CAROLINA • TENNESSEE • TEXAS

WWW.PEMSMOTORS.COM