

# Pool & Spa Motors

Specialty Designed Motors for Spas, Above and In-Ground Pools Along with Commercial Applications

VARIABLE SPEED | 2-SPEED | SINGLE-SPEED

**Nidec**

NIDEC MOTOR CORPORATION

*Countless Solutions. Expert Support.*



## At Your Service

### Customer Service Hours

8a to 5p CST  
Monday through Friday  
Call toll-free 866-278-6920

## Connect With Us

We have the online tools to connect you with the right motor quickly at <http://ecatalog.motorboss.com/>

### Enter this portal for:

- Competitive cross reference tools
- More than 50,000 cross references by competitor or OEM catalog and model numbers.
- eCatalog search tool (search by ID, features or applications)
- Dimension prints
- Nameplate data
- 3D models
- Performance data
- Wiring diagrams
- Installation and maintenance manuals

## Get The FL600 APP



On the move, but need product information in the palm of your hand? Access the FL600 digitally, by installing the FREE app on your cell phone or tablet. It's listed on the Apple App Store as FL600.

The digital FL600 is interactive. Enter a search phrase and you'll be taken to the information you need quickly. You can access the FL600 by clicking here: <http://fl600.usmotors.com/publication>. Be sure to take the brief tutorial when you sign in so you can learn how to use all the tools and features of the digital version.

## Wherever You Are, We're There

U.S. MOTORS brand products, as well as a full complement of production and facilities maintenance solutions, is available locally and throughout the world:

- On hand inventory at distributors in your area
- Authorized service stations for warranty and repair



## Table of Contents

| POOL AND SPA MOTORS   |        |
|---|--------|
| <b>POOL AND SPA MOTORS OVERVIEW</b>   | i      |
| Pool and Spa OEM Pump/Motor Replacement Guide Square Flange and C-Flange Motors                                   | ii-iii |
| Neptune™ Variable Speed Motor & Control Category "S" & "J"  | 1      |
| AFFINITY® Variable Speed Motor/Control Switchless Design, 6.5" Frame Diameter, Category "S" & "J"                 | 2      |
| EZ-COMM® Interface Adapter  | 2      |
| AFFINITY® Two Speed with Timer Switchless Design, 6.5" Frame Diameter, Category "S" & "J"                         | 3      |
| AQUA-SHIELD® Premium Efficient Two-Speed Pool and Spa Motors, 6.5" Frame Diameter, Category "S" & "J"             | 4      |
| AQUA-SHIELD PRO® Totally Enclosed Fan Cooled Pool and Spa Motors, 6.5" Frame Diameter, Category "S" & "J"         | 5      |
| AQUA-SHIELD® EZ48® Square Flange Pool and Spa Motors Switch Design, 5.5" Frame Diameter: Category "S"             | 6      |
| AQUA-SHIELD® EZ48® C-Flange Pool and Spa Motors, Switch Design, 5.5" Frame Diameter, Threaded Shaft: Category "J" | 7      |
| AQUA-SHIELD® Square Flange Pool and Spa Motors Switchless Design, 6.5" Frame Diameter, Category "S"               | 8      |
| AQUA-SHIELD® C-Flange Pool and Spa Motors Switchless Design, 6.5" Frame Diameter, Category "C" & "J"              | 9      |
| C-Flange Pool and Spa Motors, 6.5" Frame Diameter (Continued): Category "C" & "J"                                 | 10     |
| AQUA-SHIELD® Pool Cleaner Replacement Motors Switchless Design, 6.5" Frame Diameter: Category "P"                 | 10     |
| Three Phase Pool and Spa Motors, Square Flange and C-Flange Mountings   | 11     |
| HAYWARD TRISTAR®† Replacement Square Flange 6.5" Frame Diameter, Category "T"                                     | 12     |
| EZ48® Thru-Bolt Pool and Spa Motors 5.5" Frame Diameter   | 13     |
| Thru-Bolt Spa Circulator Pump Motors, 5.5" Frame Diameter   | 13     |
| Thru-Bolt Pool and Spa Pump Motors, 5.5" Frame Diameter   | 14     |
| Thru-Bolt Pool and Spa Pump Motors, 6.5" Frame Diameter   | 15     |
| Pool and Spa Motors - Close Coupled Pumps PENTAIR EQ SERIES®† Replacement Pool Motors                             | 16     |
| <b>SPECIAL APPLICATION CLOSE COUPLED PUMP</b>   | 17-23  |
| Three Phase Totally Enclosed Fan Cooled (TEFC) Premium Efficient  | 17-19  |
| Three Phase Open Drip-proof (ODP) Premium Efficient   | 19-21  |
| Single Phase Totally Enclosed Fan Cooled (TEFC)   | 22     |
| Single Phase Open Drip-proof (ODP)  | 23     |
| Replacement Motor Cross Reference   | 24-29  |

# Pool & Spa Motors

---

**Frame Size:**

(Residential) NEMA<sup>®†</sup> 48 and 56  
(Commercial) NEMA<sup>®†</sup> 56 through 326

**Horsepower:** 1/2 through 60 HP

**Phase:** Single & Three Phase

**RPM:** 60 Cycle - 3450 & 3450/1725  
50 Cycle - 2850 & 2850/1425

**Speeds:** Single and Two Speed (Hard & Soft Start) and Variable Speed

**Voltage:****Single Phase**

- 230/115
- 230
- 208-230/115
- 208-230

**Three Phase**

- 208-230/460
- 200
- 575

**Mounting:**

- Square Flange
- C Flange Threaded
- C Flange Keyed
- Thru-Bolt
- Close-Coupled Pump

**Agency:** UL<sup>®†</sup> Recognized and CSA<sup>®†</sup> Certified

**Bearings:**

- 56 Frame - Sealed Ball
- 48 Frame - Sealed Ball

**Efficiency:** Standard and Premium Efficient

**Enclosure:** Open Drip-Proof (ODP),  
Totally Enclosed Fan Cooled (TEFC)  
and TEFC IPX5



# Pool & Spa OEM Pump/Motor Replacement Guide

## Square Flange and C-Flange Motors

### Square Flange and C-Flange Motors

Motors and pumps need to be properly matched to one another to provide consistent, predictable performance. When selecting your Nidec Motor Corporation replacement motor you will need to know six important pieces of information:

- 1) Pump Mounting (ie. Square Flange, C-Flange, etc.)
- 2) Horsepower
- 3) Service Factor
- 4) Voltage
- 5) Frequency
- 6) Phase

**Most of this information can be attained from the motor nameplate. Always be sure that the total of horsepower times service factor of your new motor is equal to or greater than the total of horsepower times service factor of the original motor.**

$$\text{Total Output HP} = (\text{horsepower}) \times (\text{service factor}) \\ = \text{THP or SFHP}$$

| PUMP OEM         | BRANDNAME             | CATEGORY |
|------------------|-----------------------|----------|
| American         | American Eagle        | J        |
| American         | Ultra-Flow/Power Pump | S        |
| Aqua-Flo         | Dominator             | S        |
| Astral           | 2000 Series           | J        |
| Baker Hydro      | Hydron                | J        |
| Carvin           | Magnum                | J        |
| Carvin           | Okra                  | S        |
| Hayward          | Max-Flo               | S        |
| Hayward          | Northstar             | N        |
| Hayward          | Super II Pump         | J        |
| Hayward          | Super Pump            | J        |
| Hayward          | Tristar               | T        |
| ITT Marlow       | Argonaut              | J        |
| Jacuzzi Brothers | Cygnat                | S        |
| Jacuzzi Brothers | Magnum                | J        |
| Jandy            | ePump                 | S        |
| Jandy            | FloPro                | S        |
| Jandy            | Stealth               | S        |
| Jandy            | VS PlusHP             | S        |
| Letro            | Legend                | P        |
| Pentair          | Challenger            | S        |
| Pentair          | Dyna-Pro              | S        |
| Pentair          | IntelliFlo            | S        |
| Pentair          | IntelliPro            | S        |
| Pentair          | Max-E-Pro             | S        |
| Pentair          | SuperFlo              | S        |
| Pentair          | SuperMax              | S        |
| Pentair          | WhisperFlo            | S        |
| Polaris          | PB4                   | P        |
| Speck Pumps      | 433                   | J        |
| Speck Pumps      | Badu Pro              | J        |
| Speck Pumps      | ES90                  | J        |
| Sta-Rite         | Dura-Glas             | S        |
| Sta-Rite         | Max-E-Glas            | S        |
| Waterway         | Champion              | S        |
| Waterway         | Power Defender        | S        |
| Waterway         | SMF                   | S        |
| Waterway         | SVL56                 | S        |

### CATEGORY "N" HAYWARD NORTHSTAR C-FLANGE THREADED SHAFT

| HP    | SERVICE FACTOR | VOLTAGE     | ENERGY EFFICIENT EXTREME E® 6.5" Frame |
|-------|----------------|-------------|--|
| 3/4   | 1.85           | 208-230/115 | ESN1072                                |
| 1     | 1.40           | 208-230/115 | EUSN1102                               |
| 1     | 1.85           | 208-230/115 | ESN1102                                |
| 1 1/2 | 1.25           | 208-230/115 | EUSN1152                               |
| 1 1/2 | 1.60           | 208-230/115 | ESN1152                                |
| 2     | 1.20           | 208-230/115 | EUSN1202                               |
| 2     | 1.35           | 208-230     | ESN1202                                |
| 3     | 1.20           | 208-230     | EUSN1302                               |
| 3     | 1.60           | 208-230     | ESN1302                                |

### CATEGORY "C" NEMA C-FLANGE KEYED SHAFT

| HP  | SERVICE FACTOR | VOLTAGE | STANDARD EFFICIENCY 6.5" FRAME | ENERGY EFFICIENT EXTREME E® 6.5" Frame |
|-----|----------------|---------|--------------------------------|--|
| 1/2 | 1.60           | 230/115 | ASB120                         | ASB656                                 |
| 3/4 | 1.50           | 230/115 | ASB121                         | ASB634                                 |
| 1   | 1.40           | 230/115 | ASB122                         | ASB653                                 |
| 1.5 | 1.30           | 230/115 | ASB123                         | ASB795                                 |
| 2   | 1.20           | 230     | ASB124                         | ASB808                                 |
| 3   | 1.15           | 208-230 |                                | ASB817                                 |

### CATEGORY "T" HAYWARD TRISTAR REPLACEMENTS-SQUARE FLANGE

| HP  | SERVICE FACTOR | VOLTAGE     | STANDARD EFFICIENCY 6.5" FRAME | ENERGY EFFICIENT EXTREME E® 6.5" Frame |
|-----|----------------|-------------|--------------------------------|--|
| 1/2 | 1.98           | 208-230/115 |                                | ET3205                                 |
| 3/4 | 1.85           | 208-230/115 |                                | ET3207                                 |
| 3/4 | 1.25           | 230/115     | ASB852                         |  |
| 1   | 1.85           | 208-230/115 |                                | ET3210                                 |
| 1   | 1.25           | 230/115     | ASB853                         |  |
| 1.5 | 1.60           | 208-230/115 |                                | ET3215                                 |
| 1.5 | 1.10           | 230/115     | ASB854                         |  |
| 2   | 1.35           | 208-230     |                                | ET3220                                 |
| 2   | 1.10           | 230/115     | ASB859                         |  |
| 2.5 | 1.04           | 230         | ASB840                         |  |
| 3   | 1.15           | 208-230     | ASB844                         |  |

### CATEGORY "J" NEMA C-FLANGE THREADED SHAFT

| HP  | SERVICE FACTOR | VOLTAGE | STANDARD EFFICIENCY |            | ENERGY EFFICIENT EXTREME E® |            | ENERGY EFFICIENT VARIABLE SPEED |
|-----|----------------|---------|---------------------|------------|-----------------------------|------------|---------------------------------|
|     |                |         | 6.5" FRAME          | 5.5" FRAME | 6.5" FRAME                  | 5.5" FRAME |                                 |
| 1/2 | 1.60           | 230/115 | ASB126              | EST1052    | ASB657                      | ECT1052    |                                 |
| 3/4 | 1.00           | 230/115 | ASB227              | EUST1072   |                             |            |                                 |
|     | 1.50           | 230/115 | ASB127              | EST1072    | ASB638                      | ECT1072    |                                 |
| 1   | 1.00           | 230/115 | ASB228              | EUST1102   |                             |            | NPTT125                         |
|     | 1.40           | 230/115 | ASB128              | EST1102    | ASB654                      | ECT1102    |                                 |
| 1.5 | 1.00           | 230/115 | ASB229              | EUST1152   |                             |            | NPTT165                         |
|     | 1.30           | 230/115 | ASB129              | EST1152    | ASB796                      |            |                                 |
| 2   | 1.00           | 230/115 | ASB230              | EUST1202   |                             |            | NPTT225                         |
|     | 1.20           | 230     | ASB130              | EST1202    | ASB809                      |            |                                 |
| 2.5 | 1.00           | 230     | ASB231              | EUST1252   |                             |            | NPTT270                         |
| 3   | 1.15           | 208-230 |                     |            | ASB818                      |            | AVSJ3                           |
| 5   | 1.00           | 208-230 |                     |            | ASB819                      |            |                                 |

### CATEGORY "S" SQUARE FLANGE

| HP  | SERVICE FACTOR | VOLTAGE | STANDARD EFFICIENCY |            | ENERGY EFFICIENT EXTREME E® |            | ENERGY EFFICIENT VARIABLE SPEED |
|-----|----------------|---------|---------------------|------------|-----------------------------|------------|---------------------------------|
|     |                |         | 6.5" FRAME          | 5.5" FRAME | 6.5" FRAME                  | 5.5" FRAME |                                 |
| 1/2 | 1.30           | 230/115 |                     | EUSQ1052   |                             |            |                                 |
|     | 1.90           | 230/115 | ASB846              | ESQ1052    | ASB845                      | EQC1052    |                                 |
| 3/4 | 1.27           | 230/115 | ASB852              | EUSQ1072   |                             | EUQC1072   |                                 |
|     | 1.65           | 230/115 | ASB847              | ESQ1072    | ASB661                      | EQC1072    |                                 |
| 1   | 1.25           | 230/115 | ASB853              | EUSQ1102   |                             | EUQC1102   | NPTQ125                         |
|     | 1.65           | 230/115 | ASB848              | ESQ1102    | ASB841                      | EQC1102    |                                 |
| 1.5 | 1.10           | 230/115 | ASB854              | EUSQ1152   |                             | EUQC1152   | NPTQ165                         |
|     | 1.50           | 230/115 | ASB858              | ESQ1152    | ASB842                      |            |                                 |
| 2   | 1.10           | 230/115 | ASB859              | EUSQ1202   |                             |            | NPTQ225                         |
|     | 1.30           | 230     | ASB748              | ESQ1202    | ASB843                      |            |                                 |
| 2.5 | 1.04           | 230     | ASB840              | EUSQ1252   |                             |            | NPTQ270                         |
| 3   | 1.15           | 208-230 | ASB844              |            | ASB844                      |            | AVSS3                           |
| 5   | 1.00           | 208-230 |                     |            | ASB850                      |            |                                 |

### CATEGORY "P" POOL CLEANERS

| HP  | SERVICE FACTOR | VOLTAGE | BRAND   | NIDEC 56™ 6.5" Frame |
|-----|----------------|---------|---------|----------------------|
| 3/4 | 1.50           | 230/115 | Polaris | ASB625               |
|     | 1.50           | 230/115 | Letro   | ASB668               |

† All marks shown within this document are properties of their respective owners.

# Pool and Spa OEM Pump/Motor Replacement Guide

## Square Flange and C-Flange Motors

### Category “S” Square Flange

| HP  | SF   | Voltage | Standard Efficient |                 | Premium Efficient extreme-E® (6.5" Fr. Dia.) | High Efficiency (5.5" Fr. Dia.) |
|-----|------|---------|--------------------|-----------------|--|---------------------------------|
|     |      |         | (6.5" Fr. Dia.)    | (5.5" Fr. Dia.) |  |                                 |
| 1/2 | 1.30 | 230/115 | ASB846             | ASQ095          | ASB845                                       | AQC095                          |
|     | 1.90 | 230/115 | ASB846             | ASQ095          | ASB845                                       | AQC095                          |
| 3/4 | 1.27 | 230/115 | ASB846             | ASQ095          | ASB845                                       | AQC095                          |
|     | 1.65 | 230/115 | ASB847             | ASQ125          | ASB661                                       | AQC125                          |
| 1.0 | 1.25 | 230/115 | ASB847             | ASQ125          | ASB661                                       | AQC125                          |
|     | 1.65 | 230/115 | ASB848             | ASQ165          | ASB841                                       | AQC165                          |
| 1.5 | 1.10 | 230/115 | ASB848             | ASQ165          | ASB841                                       | AQC165                          |
|     | 1.50 | 230/115 | ASB858             |                 | ASB842                                       | ASQ225                          |
| 2.0 | 1.10 | 230/115 | ASB858             |                 | ASB842                                       | ASQ225                          |
|     | 1.30 | 230     | ASB748             |                 | ASB843                                       | ASQ260                          |
| 2.5 | 1.04 | 230     | ASB748             |                 | ASB843                                       | ASQ260                          |
| 3.0 | 1.15 | 208-230 |                    |                 | ASB844                                       |                                 |
| 5.0 | 1.00 | 208-230 |                    |                 | ASB850                                       |                                 |

### Category “J” NEMA® C-Flange Threaded Shaft

| HP  | SF   | Voltage | Standard Efficient |                 | Premium Efficient extreme-E® (6.5" Fr. Dia.) | High Efficiency (5.5" Fr. Dia.) |
|-----|------|---------|--------------------|-----------------|--|---------------------------------|
|     |      |         | (6.5" Fr. Dia.)    | (5.5" Fr. Dia.) |  |                                 |
| 1/2 | 1.60 | 230/115 | ASB126             | AST095          | ASB657                                       | ACT095                          |
| 3/4 | 1.00 | 230/115 | ASB126             | AST095          | ASB657                                       | ACT095                          |
|     | 1.50 | 230/115 | ASB127             | AST125          | ASB638                                       | ACT125                          |
| 1.0 | 1.00 | 230/115 | ASB127             | AST125          | ASB638                                       | ACT125                          |
|     | 1.40 | 230/115 | ASB128             | AST165          | ASB654                                       | ACT165                          |
| 1.5 | 1.00 | 230/115 | ASB128             | AST165          | ASB654                                       | ACT165                          |
|     | 1.30 | 230/115 | ASB129             |                 | ASB796                                       | AST225                          |
| 2.0 | 1.00 | 230/115 | ASB129             |                 | ASB796                                       | AST225                          |
|     | 1.20 | 230     | ASB130             |                 | ASB809                                       | AST275                          |
| 2.5 | 1.00 | 230     | ASB130             |                 | ASB809                                       | AST275                          |
| 3.0 | 1.15 | 208-230 |                    |                 | ASB818                                       |                                 |
| 5.0 | 1.00 | 208-230 |                    |                 | ASB819                                       |                                 |

### Category “C” NEMA® C-Flange Keyed Shaft

| HP  | SF   | Voltage     | Premium Efficient extreme-E® (6.5" Fr. Dia.) |
|-----|------|-------------|--|
| 1/2 | 1.60 | 208-230/115 | ASB656                                       |
| 3/4 | 1.50 | 208-230/115 | ASB634                                       |
| 1.0 | 1.40 | 208-230/115 | ASB653                                       |
| 1.5 | 1.30 | 208-230/115 | ASB795                                       |
| 2.0 | 1.20 | 208-230     | ASB808                                       |
| 3.0 | 1.15 | 208-230     | ASB817                                       |

### Category “T” HAYWARD TRISTAR®† Replacements Square Flange

| HP  | SF   | Voltage     | Standard Efficient (6.5" Fr. Dia.) | Premium Efficient extreme-E® (6.5" Fr. Dia.) |
|-----|------|-------------|------------------------------------|--|
| 1/2 | 1.98 | 208-230/115 |                                    | ET3205                                       |
| 3/4 | 1.85 | 208-230/115 |                                    | ET3207                                       |
|     | 1.25 | 230/115     | ASB846                             |  |
| 1.0 | 1.85 | 208-230/115 |                                    | ET3210                                       |
|     | 1.25 | 230/115     | ASB847                             |  |
| 1.5 | 1.60 | 208-230/115 |                                    | ET3215                                       |
|     | 1.10 | 230/115     | ASB848                             |  |
| 2.0 | 1.35 | 208-230     |                                    | ET3220                                       |
|     | 1.10 | 230/115     | ASB858                             |  |
| 2.5 | 1.04 | 230         | ASB748                             |  |
| 3.0 | 1.20 | 208-230     |                                    | ET3230                                       |
|     | 1.15 | 208-230     |                                    | ASB844                                       |

### Category “N” HAYWARD NorthStar™† C-Flange Threaded Shaft

| HP  | SF   | Voltage     | Premium Efficient extreme-E® (6.5" Fr. Dia.) |
|-----|------|-------------|--|
| 3/4 | 1.85 | 208-230/115 | ESN1072                                      |
| 1.0 | 1.40 | 208-230/115 | EUSN1102                                     |
|     | 1.85 | 208-230/115 | ESN1102                                      |
| 1.5 | 1.25 | 208-230/115 | EUSN1152                                     |
|     | 1.60 | 208-230/115 | ESN1152                                      |
| 2.0 | 1.20 | 208-230/115 | EUSN1202                                     |
|     | 1.35 | 208-230     | ESN1202                                      |
| 3.0 | 1.20 | 208-230     | EUSN1302                                     |
|     | 1.60 | 208-230     | ESN1302                                      |

### Category “P” Pool Cleaners

| HP  | SF   | Voltage | Brand   | Standard Efficient (6.5" Fr. Dia.) |
|-----|------|---------|---------|------------------------------------|
| 3/4 | 1.50 | 230/115 | Polaris | ASB625                             |
|     | 1.50 | 230/115 | Letro   | ASB668                             |

# NEPTUNE™ Variable Speed Motor & Control Category "S" & "J"



NEW

## FEATURES:

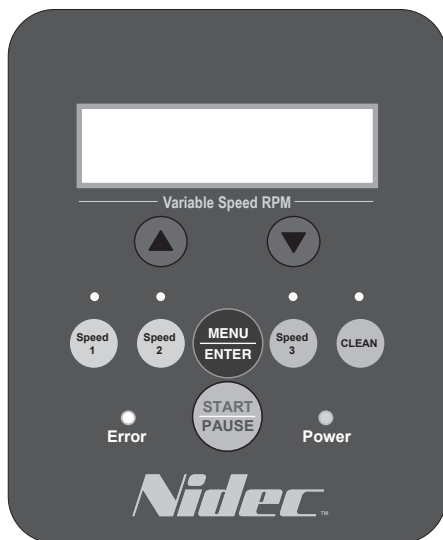
- Fully Integrated Variable Speed Motor & Control
- Brushless Permanent Magnet (BPM) Motor
- Proposed DOE Law & CEC Title 20 Compliant
- Dual Voltage 1.25THP & 1.65THP Models
- TEFC -- IPX5 Enclosure
- Shaft Threads -- (Square Flange) 1/2-20 UNC-2A or (C-Flange) 7/16-20 UNF-2A
- 50°C Ambient
- Triple Bearing Protection
- 1081 Design
- Continuous Duty
- Class F Insulated
- Sealed Ball Bearings
- 80%+ Motor & Control Efficiency @ Full Speed
- 300 Series Stainless Steel Shaft
- Speed Range: 600-3450 RPM
- Low Temperature Monitor
- **Discount Symbol: DS-FPS**
- Finned Aluminum Enclosure
- Fully Functional User Interface
- Modbus & Low Voltage Connection to Pool Control Systems
- Up to Seven Daily Schedules Can Be Programmed
- Adjustable Priming Time & Speed
- Menu Keypad Lockout
- Designed For Quiet Operation
- Simple "Drop In" installation with No Complex Wiring
- Factory Programmed Schedule Settings to Meet the Proposed DOE Law & the CEC Title 20 Rule
- Ability to communicate with pool control systems

## PREMIUM ENERGY EFFICIENT, VARIABLE SPEED, SQUARE FLANGE, CATEGORY "S"

| THP  | RPM      | Voltage | Freq  | SF Amps  | System Efficiency | Power Factor Corrected | Catalog Number | Motor Frame | Length Less Shaft | Wgt. | List    |
|------|----------|---------|-------|----------|-------------------|------------------------|----------------|-------------|-------------------|------|---------|
| 1.25 | 600-3450 | 115/230 | 50/60 | 13.2/7.7 | 81%               | No                     | NPTQ125*       | 48Y         | 13.34             | 19   | \$870   |
| 1.65 | 600-3450 | 115/230 | 50/60 | 13.6/6.8 | 81%               | Yes                    | NPTQ165*       | 48Y         | 10.66             | 28   | \$933   |
| 2.25 | 600-3450 | 230     | 50/60 | 9.5      | 84%               | Yes                    | NPTQ225*       | 48Y         | 10.66             | 30   | \$987   |
| 2.7  | 600-3450 | 230     | 50/60 | 11.1     | 84%               | Yes                    | NPTQ270*       | 48Y         | 10.66             | 30   | \$1,099 |

## PREMIUM ENERGY EFFICIENT, VARIABLE SPEED, 56J MOUNTING, CATEGORY "J"

| THP  | RPM      | Voltage | Freq  | SF Amps  | System Efficiency | Power Factor Corrected | Catalog Number | Motor Frame | Length Less Shaft | Wgt. | List    |
|------|----------|---------|-------|----------|-------------------|------------------------|----------------|-------------|-------------------|------|---------|
| 1.25 | 600-3450 | 115/230 | 50/60 | 13.2/7.7 | 81%               | No                     | NPTT125*       | 48Y         | 12.09             | 19   | \$870   |
| 1.65 | 600-3450 | 115/230 | 50/60 | 13.6/6.8 | 81%               | Yes                    | NPTT165*       | 48Y         | 10.01             | 28   | \$933   |
| 2.25 | 600-3450 | 230     | 50/60 | 9.5      | 84%               | Yes                    | NPTT225*       | 48Y         | 10.01             | 30   | \$987   |
| 2.7  | 600-3450 | 230     | 50/60 | 11.1     | 84%               | Yes                    | NPTT270*       | 48Y         | 10.01             | 30   | \$1,099 |



### Simple & Intuitive Neptune™ User Interface

- Up to Seven On/Off Time & Speed schedules available. Preprogrammed with Three energy savings mode schedules.
- One touch speed settings closely tie to the 2021 DOE Rule speed settings: Speed 1 = 1350 RPM, Speed 2 = 1725 RM & Speed 3 = 2760 RPM
- One touch Clean button which runs the motor at 3450 RPM for 30 minutes
- Up and Down arrows allow for navigation through menu options and allow for one touch +/- 10 RPM speed changes for fine tuning flow rates
- LCD screen alternately displays Time of Day and Current Speed then the Current Operation Mode and the time remaining in this Mode

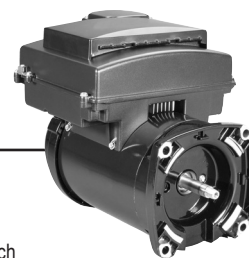
\* California Energy Commission (CEC) Appliance Regulations (Title 20) compliant  
\*\* Contact dealer for full conditions of operation  
Catalog numbers are for competitive comparison purposes only.



Extreme-E® represents our most efficient running, highest performing lines of motors.

# affinity® Variable Speed Motor/Control

## Switchless Design, 6.5" Frame Diameter, Category "S" & "J"



### FEATURES:

- Shaft Threads – (Square Flange) 1/2-20 UNC-2A or (C-Flange) 7/16-20 UNF-2A
- 50°C Ambient
- Triple Bearing Protection
- 1081 Design
- Continuous Duty
- Class B Insulated
- Totally Enclosed, Fan Cooled
- Sealed Ball Bearings
- 90% Motor Efficiency
- 300 Series Stainless Steel Shaft
- Brushless Permanent Magnet Motor
- Variable RPM, 1035-3450
- California Title 20 Compliant
- Multiple Sizes to Fit Pump Ratings
- Fully Integrated Motor Control
- Program for Various Flows (Speeds)
- Mon-Fri and Sat/Sun, Two Settings Each
- Four Custom Flow Settings
- Freeze Sensor
- Vacuum Override
- Programmable Pump Priming Setting
- RS-485 Port for Easy Connectivity with Automation Control Interface Adapter (Below)

### Premium Energy Efficient, Full Service Factor, Full Rated, Category "S"

| HP | SF   | THP  | RPM      | Voltage | Freq | SF Amps | Catalog Number | Motor Frame | Length Less Shaft | Wgt. |
|----|------|------|----------|---------|------|---------|----------------|-------------|-------------------|------|
| 3  | 1.15 | 3.45 | Variable | 230     | 60   | 14.0    | AVSS3*         | 56Y         | 13.25             | 42   |

### Premium Energy Efficient, Full Service Factor, Full Rated, Category "J"

| HP | SF   | THP  | RPM      | Voltage | Freq | SF Amps | Catalog Number | Motor Frame | Length Less Shaft | Wgt. |
|----|------|------|----------|---------|------|---------|----------------|-------------|-------------------|------|
| 3  | 1.15 | 3.45 | Variable | 230     | 60   | 14.0    | AVSJ3*         | 56J         | 13.09             | 43   |

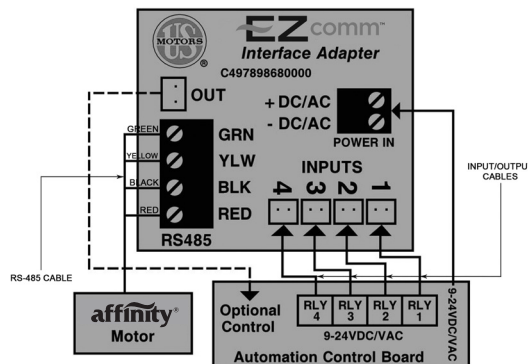
## EZ-COMM® Interface Adapter

### FEATURES:

- 4 speed settings
- One output signal to allow for proper timing of operation for other pool equipment pad items
- Can operate via the AFFINITY® variable speed motor user interface in conjunction with the pool control system
- Will operate with any pool control system with low voltage connections
- EZ to install and connect
- Power Adapter for Phone Style Connections

## EZ-COMM® Interface Adapter

Catalog no. **EZCOM1**  
Weight **2 LB**



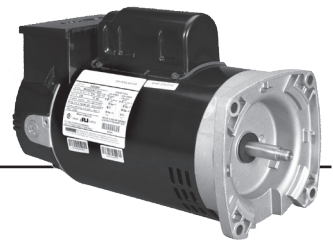
\* California Energy Commission (CEC) Appliance Regulations (Title 20) compliant  
\*\* Contact dealer for full conditions of operation  
Catalog numbers are for competitive comparison purposes only.

† All marks shown within this document are properties of their respective owners.



# affinity® Two Speed with Timer

## Switchless Design, 6.5" Frame Diameter, Category "S" & "J"



### FEATURES:

- Two Compartment
- Shaft Threads – (Square Flange) 1/2-20 UNC-2A or (C-Flange) 7/16-20 UNF-2A
- 50°C Ambient
- 1081 Design
- Continuous Duty
- Class B Insulated
- Open Drip-Proof
- 300 Series Stainless Steel Shaft
- Thermally Protected
- Program for Low & High Speeds
- Two Settings – Mon-Fri and Sat/Sun
- High/Low Speed Override
- Freeze Sensor
- California Title 20/24 Compliant



- Optimized internal airflow design minimizes heat and moisture buildup inside the motor
- Internal bearing cover protects the drive/pump end ball bearing from water and debris that may occur inside of the motor
- Three additional layers of drive/pump end bearing protection:
  - Double Sealed Ball Bearing
  - Lip Seal
  - Water Slinger

### extreme-E Square Flange, Premium Energy Efficient, Total Horsepower Rated, Category "S"

| THP       | RPM       | Voltage | Freq | Amps       | Catalog Number | Motor Frame | Length Less Shaft | Wgt. |
|-----------|-----------|---------|------|------------|----------------|-------------|-------------------|------|
| 1.25/0.20 | 3450/1725 | 230     | 60   | 5.8 / 1.2  | ASB2980T*      | 56Y         | 12.99             | 32   |
| 1.65/0.26 | 3450/1725 | 230     | 60   | 7.4 / 1.4  | ASB2982T*      | 56Y         | 13.24             | 34   |
| 2.25/0.38 | 3450/1725 | 230     | 60   | 9.2 / 2.1  | ASB2983T*      | 56Y         | 13.74             | 36   |
| 2.60/0.43 | 3450/1725 | 230     | 60   | 10.6 / 2.4 | ASB2984T*      | 56Y         | 14.24             | 39   |

### extreme-E C-Flange, Premium Energy Efficient, Total Horsepower Rated, Category "J"

| THP       | RPM       | Voltage | Freq | Amps     | Catalog Number | Motor Frame | Length Less Shaft | Wgt. |
|-----------|-----------|---------|------|----------|----------------|-------------|-------------------|------|
| 1.25/0.17 | 3450/1725 | 230     | 60   | 5.8/1.2  | ASB2973HT*     | 56J         | 12.01             | 31   |
| 1.65/0.20 | 3450/1725 | 230     | 60   | 7.4/1.3  | ASB2975T*      | 56J         | 12.01             | 33   |
| 2.25/0.30 | 3450/1725 | 230     | 60   | 9.2/2.1  | ASB2977T*      | 56J         | 12.51             | 35   |
| 2.60/0.33 | 3450/1725 | 230     | 60   | 10.6/2.4 | ASB2979T*      | 56J         | 12.51             | 38   |

\* California Energy Commission (CEC) Appliance Regulations (Title 20) compliant  
 \*\* Contact dealer for full conditions of operation  
 Catalog numbers are for competitive comparison purposes only.

extreme-E Extreme-E® represents our most efficient running, highest performing lines of motors.

† All marks shown within this document are properties of their respective owners.

# Premium Efficient Two-Speed Pool and Spa Motors NEW Switchless Design, 6.5" Frame Diameter, Category "S" & "J"



Eliminate the Industry's #1 cause of failure on two-speed motors, the mechanical switch, with these switchless premium efficient two-speed motors

## FEATURES:

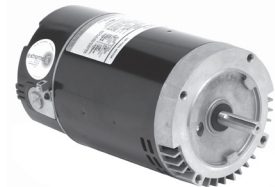
- Two Compartment
- Shaft Threads – (Square Flange) 1/2-20 UNC-2A or (C-Flange) 7/16-20 UNF-2A
- 50°C Ambient
- 1081 Design
- Continuous Duty
- Open Dripproof
- Class B Insulated
- 300 Series Stainless Steel Shaft
- Thermally Protected



- Optimized internal airflow design minimizes heat and moisture buildup inside the motor
- Internal bearing cover protects the drive/pump end ball bearing from water and debris that may occur inside of the motor
- Three additional layers of drive/pump end bearing protection:
  - Double Sealed Ball Bearing
  - Lip Seal
  - Water Slinger

## extreme-E Square Flange, Premium Energy Efficient, Total Horsepower Rated, Category "S"

| THP       | RPM       | Voltage | Freq | SF Amps  | Catalog Number | Motor Frame | Length Less Shaft | Wgt. |
|-----------|-----------|---------|------|----------|----------------|-------------|-------------------|------|
| 1.25/0.20 | 3450/1725 | 230     | 60   | 5.8/1.2  | ASB2980*       | 56Y         | 12.99             | 30   |
| 1.65/0.26 | 3450/1725 | 230     | 60   | 7.4/1.4  | ASB2982*       | 56Y         | 13.24             | 32   |
| 2.25/0.38 | 3450/1725 | 230     | 60   | 9.2/2.1  | ASB2983*       | 56Y         | 13.74             | 34   |
| 2.60/0.43 | 3450/1725 | 230     | 60   | 10.6/2.4 | ASB2984*       | 56Y         | 14.24             | 37   |



## extreme-E C-Flange, Premium Energy Efficient, Total Horsepower Rated, Category "J"

| THP       | RPM       | Voltage | Freq | Max Pump SF Amps | Catalog Number | Motor Frame | Length Less Shaft | Wgt. |
|-----------|-----------|---------|------|------------------|----------------|-------------|-------------------|------|
| 1.25/0.17 | 3450/1725 | 230     | 60   | 5.8/1.2          | ASB2973H*      | 56J         | 12.01             | 29   |
| 1.65/0.20 | 3450/1725 | 230     | 60   | 7.4/1.3          | ASB2975*       | 56J         | 12.01             | 31   |
| 2.25/0.30 | 3450/1725 | 230     | 60   | 9.2/2.1          | ASB2977*       | 56J         | 12.51             | 33   |
| 2.60/0.33 | 3450/1725 | 230     | 60   | 10.6/2.4         | ASB2979*       | 56J         | 12.51             | 36   |

NOTE: Toggle switch cover assembly available for two speed models - LO-OFF-HI- X297576970000L

\* California Energy Commission (CEC) Appliance Regulations (Title 20) compliant

\*\* Contact dealer for full conditions of operation

Catalog numbers are for competitive comparison purposes only.

extreme-E Extreme-E® represents our most efficient running, highest performing lines of motors.

† All marks shown within this document are properties of their respective owners.

# AQUA-SHIELD PRO®

## Totally Enclosed Fan Cooled Pool and Spa Motors

### Switchless Design, Finned Aluminum Frame, 5.5" Frame Diameter, Category "S" & "J"



What benefits does the Aqua-Shield PRO™'s IPX5 enclosure provide your customers? First, the aluminum fin construction provides additional corrosion resistance and helps dissipate heat which promotes cooler running motors. Second, this product line of motors is designed and tested and is protected against low pressure water jets hitting the motor from any direction. This motor prevents the intrusion of moisture from getting inside the motor near the electrical components and this helps reduce winding failures even in the most extreme environments. If your customers have pumps and motors operating in wet, humid environments, the AQUA-SHIELD PRO® pump motor is what you need.

#### FEATURES:

- Shaft Threads – (Square Flange) 1/2-20 UNC-2A or (C-Flange) 7/16-20 UNF-2A
- 50°C Ambient
- 1081 Design
- Continuous Duty
- Class B Insulated
- Totally Enclosed, Fan Cooled, IPX5 Enclosure
- 300 Series Stainless Steel Shaft
- Thermally Protected
- 5.5" Diameter Frame
- Triple Bearing Protection
- Finned Aluminum Frame
- **Discount Symbol: DS-FPS**

#### extreme-E Square Flange, Premium Energy Efficient, Total Horsepower Rated, Category "S"

| THP  | RPM  | Voltage     | Freq | SF Amps       | Catalog Number | Motor Frame | Length Less Shaft | Wgt. | List  |
|------|------|-------------|------|---------------|----------------|-------------|-------------------|------|-------|
| 1.25 | 3450 | 208-230/115 | 60   | 5.9-5.5/11.0  | TEQ125         | 48Y         | 12.10             | 26.5 | \$314 |
| 1.65 | 3450 | 208-230/115 | 60   | 8.1-7.2/14.4  | TEQ165         | 48Y         | 13.10             | 29.5 | \$341 |
| 2.25 | 3450 | 208-230/115 | 60   | 10.5-9.4/18.8 | TEQ225         | 48Y         | 13.10             | 31.5 | \$435 |
| 2.70 | 3450 | 208-230     | 60   | 11.6-10.5     | TEQ270         | 48Y         | 12.1              | 28   | \$522 |
| 3.45 | 3450 | 208-230     | 60   | 15.2-14.9     | TEQ345         | 48Y         | 13.10             | 34   | \$660 |

#### extreme-E C-Flange, Premium Energy Efficient, Total Horsepower Rated, Category "J"

| THP  | RPM  | Voltage     | Freq | SF Amps       | Catalog Number | Motor Frame | Length Less Shaft | Wgt. | List  |
|------|------|-------------|------|---------------|----------------|-------------|-------------------|------|-------|
| 1.25 | 3450 | 208-230/115 | 60   | 5.9-5.5/11.0  | TET125         | 56J         | 12.6              | 26.5 | \$305 |
| 1.65 | 3450 | 208-230/115 | 60   | 8.1-7.2/14.4  | TET165         | 56J         | 12.6              | 29   | \$330 |
| 2.25 | 3450 | 208-230/115 | 60   | 10.5-9.4/18.8 | TET225         | 56J         | 12.6              | 31   | \$424 |
| 2.75 | 3450 | 208-230     | 60   | 11.6-10.5     | TET275         | 56J         | 12.6              | 28   | \$505 |
| 3.45 | 3450 | 208-230     | 60   | 15.2-14.9     | TET345         | 56J         | 12.6              | 34   | \$650 |

TBD Refer to office for current list price

\* California Energy Commission (CEC) Appliance Regulations (Title 20) compliant

\*\* Contact dealer for full conditions of operation

Catalog numbers are for competitive comparison purposes only.



Extreme-E® represents our most efficient running, highest performing lines of motors.

† All marks shown within this document are properties of their respective owners.

Rev. 10/2020

# AQUA-SHIELD® EZ48® Square Flange Pool and Spa Motors Switch Design, 5.5" Frame Diameter: Category "S"



## FEATURES:

- Two Compartment
- Shaft Threads - 1/2-20 UNF-2A
- 50°C Ambient
- Triple Bearing Protection
- 1081 Design
- Continuous Duty
- Open Dripproof
- Sealed Ball Bearings
- Thermally Protected
- Class B Insulated
- 300 Series Stainless Steel Shaft
- Voltage Selection Device (Dual Voltage Only)



- Optimized internal airflow design minimizes heat and moisture buildup inside the motor
- Internal bearing cover protects the drive/pump end ball bearing from water and debris that may occur inside of the motor
- Three additional layers of drive/pump end bearing protection:
  - Double Sealed Ball Bearing
  - Lip Seal
  - Water Slinger

## Standard Efficient, Total Horsepower Rated



| THP  | RPM  | Voltage  | Freq | Amps     | Catalog Number | Motor Frame | Length Less Shaft | Wgt. |
|------|------|----------|------|----------|----------------|-------------|-------------------|------|
| 0.65 | 3450 | 230/115  | 60   | 4.1/8.2  | ASQ065         | 48Y         | 11.80             | 16   |
| 0.95 | 3450 | 230 /115 | 60   | 5.5/11.0 | ASQ095         | 48Y         | 12.05             | 18   |
| 1.25 | 3450 | 230 /115 | 60   | 7.0/14.0 | ASQ125         | 48Y         | 13.05             | 24   |
| 1.65 | 3450 | 230 /115 | 60   | 9.0/18.0 | ASQ165         | 48Y         | 13.05             | 27   |
| 2.25 | 3450 | 230 /115 | 60   | 9.5/19.0 | ASQ225*        | 48Y         | 13.30             | 29   |
| 2.25 | 3450 | 230      | 60   | 9.5      | ASQ225H*       | 48Y         | 13.30             | 29   |
| 2.60 | 3450 | 230      | 60   | 11.2     | ASQ260*        | 48Y         | 13.30             | 30   |

## High Efficiency, Total Horsepower Rated



| THP  | RPM  | Voltage  | Freq | SF Amps  | Catalog Number | Motor Frame | Length Less Shaft | Wgt. |
|------|------|----------|------|----------|----------------|-------------|-------------------|------|
| 0.95 | 3450 | 230 /115 | 60   | 4.6/9.2  | *AQC095*       | 48Y         | 12.05             | 19   |
| 1.25 | 3450 | 230 /115 | 60   | 5.7/11.4 | AQC125*        | 48Y         | 12.80             | 24   |
| 1.65 | 3450 | 230 /115 | 60   | 7.6/15.2 | AQC165*        | 48Y         | 13.30             | 26   |

PENTAIR Max-E-GLAS®† & DURA\*GLAS®† Replacement Motor Base Available B3574344900010L

\* California Energy Commission (CEC) Appliance Regulations (Title 20) compliant

\*\* Contact dealer for full conditions of operation

Catalog numbers are for competitive comparison purposes only.

▲High Efficiency, Capacitor Start/Run Design

† All marks shown within this document are properties of their respective owners.

# AQUA-SHIELD® EZ48® C-Flange Pool and Spa Motors Switch Design, 5.5" Frame Diameter, Threaded Shaft: Category "J"



## FEATURES:

- Two Compartment
- Triple Bearing Protection
- Thermally Protected
- 1081 Design
- Shaft Threads - 7/16-20 UNF-2A
- Class B Insulated
- Open Dripproof
- Continuous Duty
- 50°C Ambient
- 300 Series Stainless Steel Shaft
- Sealed Ball Bearings
- Voltage Selection Device (Dual Voltage Only)



- Optimized internal airflow design minimizes heat and moisture buildup inside the motor
- Internal bearing cover protects the drive/pump end ball bearing from water and debris that may occur inside of the motor
- Three additional layers of drive/pump end bearing protection:
  - Double Sealed Ball Bearing
  - Lip Seal
  - Water Slinger

## Standard Efficient, Total Horsepower Rated



| THP  | RPM  | Voltage | Freq | SF Amps   | Catalog Number | Motor Frame | Length Less Shaft | Wgt. |
|------|------|---------|------|-----------|----------------|-------------|-------------------|------|
| 0.95 | 3450 | 230/115 | 60   | 5.5/11.0  | AST095         | 56J         | 11.25             | 18   |
| 1.25 | 3450 | 230/115 | 60   | 7.0/14.0  | AST125         | 56J         | 12.25             | 24   |
| 1.65 | 3450 | 230/115 | 60   | 8.5/17.0  | AST165         | 56J         | 12.75             | 27   |
| 2.25 | 3450 | 230/115 | 60   | 9.5/19.0  | AST225*        | 56J         | 13.00             | 29   |
| 2.75 | 3450 | 208-230 | 60   | 12.3-11.3 | AST275*        | 56J         | 13.00             | 30   |

## High Efficiency, Total Horsepower Rated



| THP  | RPM  | Voltage | Freq | Amps     | Catalog Number | Motor Frame | Length Less Shaft | Wgt. |
|------|------|---------|------|----------|----------------|-------------|-------------------|------|
| 0.95 | 3450 | 230/115 | 60   | 4.6/9.2  | *ACT095*       | 56J         | 11.25             | 19   |
| 1.25 | 3450 | 230/115 | 60   | 5.7/11.4 | ACT125*        | 56J         | 11.75             | 24   |
| 1.65 | 3450 | 230/115 | 60   | 7.6/15.2 | ACT165*        | 56J         | 12.25             | 26   |

\* California Energy Commission (CEC) Appliance Regulations (Title 20) compliant

\*\* Contact dealer for full conditions of operation

Catalog numbers are for competitive comparison purposes only.

▲High Efficiency, Capacitor Start/Run Design

† All marks shown within this document are properties of their respective owners.

# Square Flange Pool and Spa Motors Switchless Design, 6.5" Frame Diameter, Category "S"



## FEATURES:

- Two Compartment
- 1081 Design
- Open Dripproof
- 300 Series Stainless Steel Shaft
- Shaft Threads - 1/2-20 UNF-2A
- Voltage Selection Device (Dual Voltage Only)
- Continuous Duty
- Class B Insulated
- Thermally Protected
- 50°C Ambient
- THP Rated



- Optimized internal airflow design minimizes heat and moisture buildup inside the motor
- Internal bearing cover protects the drive/pump end ball bearing from water and debris that may occur inside of the motor
- Three additional layers of drive/pump end bearing protection:
  - Double Sealed Ball Bearing
  - Lip Seal
  - Water Slinger

## Standard Efficient, Total Horsepower Rated



| THP  | RPM  | Voltage  | Freq | THP Amps  | Catalog Number      | Motor Frame | Length Less Shaft | Wgt. |
|------|------|----------|------|-----------|---------------------|-------------|-------------------|------|
| 0.98 | 3450 | 230 /115 | 60   | 5.4/10.8  | ASB846              | 56Y         | 11.99             | 22   |
| 1.25 | 3450 | 230 /115 | 60   | 7.0/14.0  | ASB847              | 56Y         | 12.49             | 25   |
| 1.65 | 3450 | 230 /115 | 60   | 7.7/15.4  | ASB848              | 56Y         | 12.74             | 26   |
| 2.25 | 3450 | 230 /115 | 60   | 10.8/21.6 | ASB858              | 56Y         | 13.74             | 33   |
| 2.60 | 3450 | 230      | 60   | 11.5      | ASB748              | 56Y         | 13.74             | 33   |
| 3.45 | 3450 | 208-230  | 60   | 14.8-13.5 | ASB844              | 56Y         | 14.24             | 40   |
| 5.00 | 3450 | 208-230  | 60   | 21.0-19.4 | ASB850 <sup>Δ</sup> | 56Y         | 15.74             | 52   |

## extreme-E Premium Energy Efficient, Total Horsepower Rated (Suitable for 50Hz)\*\*



| THP  | RPM  | Voltage     | Freq | THP Amps     | Catalog Number      | Motor Frame | Length Less Shaft | Wgt. |
|------|------|-------------|------|--------------|---------------------|-------------|-------------------|------|
| 0.98 | 3450 | 208-230/115 | 60   | 4.4-4.2/8.4  | ASB845              | 56Y         | 12.24             | 25   |
| 1.25 | 3450 | 208-230/115 | 60   | 5.9-5.5/11.0 | ASB661              | 56Y         | 12.74             | 28   |
| 1.65 | 3450 | 208-230/115 | 60   | 7.6-7.2/14.4 | ASB841              | 56Y         | 12.99             | 30   |
| 2.25 | 3450 | 208-230/115 | 60   | 9.7-9.0/18.0 | ASB842              | 56Y         | 13.74             | 35   |
| 2.60 | 3450 | 208-230     | 60   | 10.6-10.0    | ASB843              | 56Y         | 13.74             | 35   |
| 3.45 | 3450 | 208-230     | 60   | 14.8-13.5    | ASB844              | 56Y         | 14.24             | 40   |
| 5.00 | 3450 | 208-230     | 60   | 21.0-19.4    | ASB850 <sup>Δ</sup> | 56Y         | 15.74             | 52   |

## extreme-E Premium Energy Efficient, Two Speed, Total Horsepower Rated, Soft Start, Switch Design

| HP      | SF   | THP       | RPM       | Voltage | Freq | SF Amps  | Catalog Number | Motor Frame | Length Less Shaft | Wgt. |
|---------|------|-----------|-----------|---------|------|----------|----------------|-------------|-------------------|------|
| 3/4/1.2 | 1.67 | 1.25/0.20 | 3450/1725 | 115     | 60   | 14.5/5.3 | ◊EB981         | 56Y         | 12.30             | 30   |

PENTAIR Max-E-GLAS<sup>®†</sup> & DURA<sup>®</sup>GLAS<sup>®†</sup> Replacement Motor Base Available B3574344900010L  
NOTE: Toggle switch cover assembly available for two speed models - LO-OFF-HI- X2975769700000L

<sup>Δ</sup>190 Volt Maximum Operating Voltage for 50 Hz

◊ Not Normally Stocked

\* California Energy Commission (CEC) Appliance Regulations (Title 20) compliant  
\*\* Contact dealer for full conditions of operation  
Catalog numbers are for competitive comparison purposes only.

extreme-E Extreme-E<sup>®</sup> represents our most efficient running, highest performing lines of motors.

† All marks shown within this document are properties of their respective owners.

Rev. 10/2020

# C-Flange Pool and Spa Motors

## Switchless Design, 6.5" Frame Diameter, Category "C" & "J"



### FEATURES:

- Two Compartment
- Shaft Threads - 7/16-20 UNF-2A
- 50°C Ambient
- 1081 Design
- Continuous Duty
- Class B Insulated
- Open Dripproof
- 300 Series Stainless Steel Shaft
- Thermally Protected
- Voltage Selection Device (Dual Voltage Only)



- Optimized internal airflow design minimizes heat and moisture buildup inside the motor
- Internal bearing cover protects the drive/pump end ball bearing from water and debris that may occur inside of the motor
- Three additional layers of drive/pump end bearing protection:
  - Double Sealed Ball Bearing
  - Lip Seal
  - Water Slinger

### Standard Efficient, Total Horsepower Rated



| THP  | RPM  | Voltage | Freq | Amps      | Shaft    | Catalog Number      | Motor Frame | Length Less Shaft | Wgt. |
|------|------|---------|------|-----------|----------|---------------------|-------------|-------------------|------|
| 0.98 | 3450 | 230/115 | 60   | 5.4/10.8  | Threaded | ASB126              | 56J         | 10.26             | 21   |
| 1.25 | 3450 | 230/115 | 60   | 7.0/14.0  | Threaded | ASB127              | 56J         | 10.76             | 24   |
| 1.65 | 3450 | 230/115 | 60   | 7.7/15.4  | Threaded | ASB128              | 56J         | 11.01             | 25   |
| 2.25 | 3450 | 230/115 | 60   | 10.8/21.6 | Threaded | ASB129              | 56J         | 12.01             | 31   |
| 2.60 | 3450 | 230     | 60   | 11.5      | Threaded | ASB130              | 56J         | 11.76             | 33   |
| 3.45 | 3450 | 208-230 | 60   | 14.8-13.5 | Threaded | ASB818              | 56J         | 12.51             | 39   |
| 5.00 | 3450 | 208-230 | 60   | 21.0-19.4 | Threaded | ASB819 <sup>Δ</sup> | 56J         | 14.01             | 51   |

### extreme-E Premium Energy Eff., Total Horsepower Rated (Suitable for 50Hz)\*\*



| THP  | RPM  | Voltage     | Freq | Amps         | Shaft    | Catalog Number        | Motor Frame | Length Less Shaft | Wgt. |
|------|------|-------------|------|--------------|----------|-----------------------|-------------|-------------------|------|
| 0.98 | 3450 | 208-230/115 | 60   | 4.5-4.3/8.6  | Keyed    | ASB656                | 56C         | 10.51             | 24   |
| 0.98 | 3450 | 208-230/115 | 60   | 4.5-4.3/8.6  | Threaded | ASB657                | 56J         | 10.51             | 24   |
| 1.25 | 3450 | 208-230/115 | 60   | 5.9-5.5/11.0 | Keyed    | ASB634                | 56C         | 11.01             | 27   |
| 1.25 | 3450 | 208-230/115 | 60   | 5.9-5.5/11.0 | Threaded | ASB638                | 56J         | 11.01             | 27   |
| 1.65 | 3450 | 208-230/115 | 60   | 7.6-7.2/14.4 | Keyed    | ASB653                | 56C         | 11.26             | 29   |
| 1.65 | 3450 | 208-230/115 | 60   | 7.6-7.2/14.4 | Threaded | ASB654                | 56J         | 11.26             | 29   |
| 2.25 | 3450 | 208-230/115 | 60   | 9.7-9.0/18.0 | Keyed    | ASB795                | 56C         | 12.01             | 35   |
| 2.25 | 3450 | 208-230/115 | 60   | 9.7-9.0/18.0 | Threaded | ASB796                | 56J         | 12.01             | 35   |
| 2.60 | 3450 | 208-230     | 60   | 10.6-10.0    | Keyed    | ASB808                | 56C         | 12.01             | 34   |
| 2.60 | 3450 | 208-230     | 60   | 10.6-10.0    | Threaded | ASB809                | 56J         | 12.01             | 34   |
| 3.45 | 3450 | 208-230     | 60   | 14.8-13.5    | Keyed    | ASB817                | 56C         | 12.51             | 39   |
| 3.45 | 3450 | 208-230     | 60   | 14.8-13.5    | Threaded | ASB818                | 56J         | 12.51             | 39   |
| 5.00 | 3450 | 208-230     | 60   | 21.0-19.4    | Threaded | ASB819 <sup>Δ</sup>   | 56J         | 14.01             | 51   |
| 5.00 | 3450 | 208-230     | 60   | 21.0-19.4    | Threaded | ♦ASB116 <sup>Δ◊</sup> | 56Y         | 14.76             | 53   |

PENTAIR Max-E-GLAS<sup>®†</sup> & DURA<sup>®</sup>GLAS<sup>®†</sup> Replacement Motor Base Available B3574344900010L

\* California Energy Commission (CEC) Appliance Regulations (Title 20) compliant  
 \*\* Contact dealer for full conditions of operation  
 Catalog numbers are for competitive comparison purposes only.

Δ190 Volt Maximum Operating Voltage for 50 Hz  
 ♦B14 flange, metric shaft  
 ◊ Not Normally Stocked

extreme-E Extreme-E<sup>®</sup> represents our most efficient running, highest performing lines of motors.

† All marks shown within this document are properties of their respective owners.

## C-Flange Pool and Spa Motors Switchless Design, 6.5" Frame Diameter (Continued): Category "C" & "J"



### FEATURES:

- Two Compartment
- Shaft Threads - 7/16-20 UNF-2A
- 50°C Ambient
- 1081 Design
- Continuous Duty
- Class B Insulated
- Open Dripproof
- 300 Series Stainless Steel Shaft
- Thermally Protected
- Secondary "Max Pump" Service Factor (SF) for C-Flange motors to allow for popular OEM pump loading

### extreme-E Two Speed, Total Horsepower Rated, Soft Start

| THP       | RPM       | Voltage | Freq | Amps     | Shaft    | Catalog Number     | Motor Frame | Length Less Shaft | Wgt. |
|-----------|-----------|---------|------|----------|----------|--------------------|-------------|-------------------|------|
| 1.25/0.17 | 3450/1725 | 115V    | 60   | 14.5/5.3 | Threaded | EB973 <sup>o</sup> | 56J         | 11.02             | 28   |

<sup>o</sup>Not Normally Stocked

NOTE: Toggle switch cover assembly available for two speed models - LO-OFF-HI- X297576970000L

## Pool Cleaner Replacement Motors Switchless Design, 6.5" Frame Diameter: Category "P"



### FEATURES:

- Two Compartment
- Shaft Threads - 1/2-20 UNF-2A
- 50°C Ambient
- 1081 Design
- Continuous Duty
- Voltage Selection Device
- Class B Insulated
- Open Drip-Proof
- 300 Series Stainless Steel Shaft
- Thermally Protected
- Secondary "Max Pump" Service Factor (SF) for C-Flange motors to allow for popular OEM pump loading
- **Discount Symbol: DS-FPS**



- Optimized internal airflow design minimizes heat and moisture buildup inside the motor
- Internal bearing cover protects the drive/ pump end ball bearing from water and debris that may occur inside of the motor
- Three additional layers of drive/pump end bearing protection:
  - Double Sealed Ball Bearing
  - Lip Seal
  - Water Slinger

### Standard Efficient, Full Service Factor, Full Rated

| HP  | NEMA <sup>o†</sup> SF | Max Pump SF | THP  | RPM  | Voltage | Freq | NEMA <sup>o†</sup> SF Amps | Max Pump SF Amps | Catalog Number | Motor Frame | Length Less Shaft | Wgt. | Replacement Brand | List  |
|-----|-----------------------|-------------|------|------|---------|------|----------------------------|------------------|----------------|-------------|-------------------|------|-------------------|-------|
| 3/4 | 1.50                  | 1.65        | 1.25 | 3450 | 230/115 | 60   | 6.3/12.6                   | 7.0/14.0         | ASB625         | 56CZ        | 10.76             | 24   | Polaris/Zodiac    | \$305 |
| 3/4 | 1.50                  | 1.65        | 1.25 | 3450 | 230/115 | 60   | 6.0/12.0                   | 7.0/14.0         | ASB668         | 56CZ        | 10.76             | 24   | Letro/Pentair     | \$305 |

\* California Energy Commission (CEC) Appliance Regulations (Title 20) compliant

\*\* Contact dealer for full conditions of operation

Catalog numbers are for competitive comparison purposes only.

extreme-E Extreme-E<sup>o</sup> represents our most efficient running, highest performing lines of motors.

† All marks shown within this document are properties of their respective owners.

Rev. 10/2020



## Three Phase Pool & Spa Motors

### FEATURES:

- Single Compartment
- Sealed Ball Bearings
- Triple Bearing Protection
- Open Drip-Proof
- Class B Insulated
- Shaft Threads – (Square Flange) 1/2-20 UNC-2A or (C-Flange) 7/16-20 UNF-2A
- 300 Series Stainless Steel Shaft
- Continuous Duty
- 50°C Ambient
- Rated for 50 Hertz, 1.0 Service Factor
- **Discount Symbol: DS-FPS**

### Square Flange, Full Service Factor, Full Rated

| HP  | SF   | RPM  | Voltage     | Freq | SF Amps       | Catalog Number | Motor Frame | Length Less Shaft | Wgt. | Shaft    | List  |
|-----|------|------|-------------|------|---------------|----------------|-------------|-------------------|------|----------|-------|
| 1/2 | 1.90 | 3450 | 208-230/460 | 60   | 2.9-2.6/1.3   | *EH491         | 56Y         | 10.27             | 23   | Threaded | \$312 |
| 3/4 | 1.65 | 3450 | 208-230/460 | 60   | 4.1-3.8/1.9   | *EH492         | 56Y         | 10.27             | 23   | Threaded | \$343 |
| 1.0 | 1.65 | 3450 | 208-230/460 | 60   | 4.8-4.6/2.3   | *EH635         | 56Y         | 10.27             | 25   | Threaded | \$383 |
| 1.5 | 1.47 | 3450 | 208-230/460 | 60   | 6.4-6.2/3.1   | *EH636         | 56Y         | 10.52             | 28   | Threaded | \$486 |
| 2.0 | 1.30 | 3450 | 208-230/460 | 60   | 7.0-6.6/3.3   | *EH637         | 56Y         | 11.02             | 33   | Threaded | \$589 |
| 3.0 | 1.15 | 3450 | 208-230/460 | 60   | 9.6-9.4/4.7   | *EH755         | 56Y         | 12.04             | 41   | Threaded | \$638 |
| 5.0 | 1.00 | 3450 | 208-230/460 | 60   | 13.7-13.0/6.5 | *EH995         | 56Y         | 13.50             | 52   | Threaded | \$705 |

### C-Flange, Keyed and Threaded Shaft, Full Service Factor, Full Rated

| HP  | SF   | RPM  | Voltage     | Freq | SF Amps     | Catalog Number | Motor Frame | Length Less Shaft | Wgt. | Shaft    | List  |
|-----|------|------|-------------|------|-------------|----------------|-------------|-------------------|------|----------|-------|
| 1/2 | 1.60 | 3450 | 208-230/460 | 60   | 2.7-2.4/1.2 | *EH281         | 56C         | 9.07              | 22   | Keyed    | \$268 |
| 1/2 | 1.60 | 3450 | 208-230/460 | 60   | 2.7-2.4/1.2 | *EH282         | 56J         | 9.07              | 22   | Threaded | \$294 |
| 3/4 | 1.50 | 3450 | 208-230/460 | 60   | 3.7-3.6/1.8 | *EH450         | 56C         | 9.07              | 22   | Keyed    | \$299 |
| 3/4 | 1.50 | 3450 | 208-230/460 | 60   | 3.7-3.6/1.8 | *EH451         | 56J         | 9.07              | 22   | Threaded | \$326 |
| 1.0 | 1.40 | 3450 | 208-230/460 | 60   | 4.4-4.2/2.1 | *EH513         | 56C         | 9.07              | 24   | Keyed    | \$339 |
| 1.0 | 1.40 | 3450 | 208-230/460 | 60   | 4.4-4.2/2.1 | *EH514         | 56J         | 9.07              | 24   | Threaded | \$370 |
| 1.5 | 1.30 | 3450 | 208-230/460 | 60   | 6.0-5.8/2.9 | *EH616         | 56C         | 9.31              | 27   | Keyed    | \$441 |
| 1.5 | 1.30 | 3450 | 208-230/460 | 60   | 6.0-5.8/2.9 | *EH617         | 56J         | 9.31              | 27   | Threaded | \$477 |
| 2.0 | 1.20 | 3450 | 208-230/460 | 60   | 6.6-6.4/3.2 | *EH704         | 56C         | 9.82              | 32   | Keyed    | \$482 |
| 2.0 | 1.20 | 3450 | 208-230/460 | 60   | 6.6-6.4/3.2 | *EH705         | 56J         | 9.82              | 32   | Threaded | \$544 |
| 3.0 | 1.15 | 3450 | 208-230/460 | 60   | 9.6-9.4/4.7 | *EH740         | 56C         | 10.82             | 40   | Keyed    | \$602 |
| 3.0 | 1.15 | 3450 | 208-230/460 | 60   | 9.6-9.4/4.7 | *EH741         | 56J         | 10.82             | 40   | Threaded | \$655 |

PENTAIR Max-E-GLAS®† & DURA\*GLAS®† Replacement Motor Base Available B3574344900010L

\* California Energy Commission (CEC) Appliance Regulations (Title 20) compliant

\*\* Contact dealer for full conditions of operation

Catalog numbers are for competitive comparison purposes only.

† All marks shown within this document are properties of their respective owners.

## HAYWARD NorthStar™ Replacements C-Flange Switchless Design, 6.5" Frame Diameter, Threaded Shaft: Category "N"

### FEATURES:

- Two Compartment
- Triple Bearing Protection
- Thermally Protected
- 1081 Design
- Shaft Threads - 7/16-20 UNF-2A
- Class B Insulated
- Open Dripproof
- Continuous Duty
- 60°C Ambient
- 6.5" Diameter Frame
- 300 Series Stainless Steel Shaft
- Sealed Ball Bearings
- Voltage Selection Device (Dual Voltage Only)



### extreme-E Premium Energy Efficient, Full Service Factor, Full Rated



| HP  | SF   | THP  | RPM  | Voltage     | Freq | SF Amps        | Catalog Number | Motor Frame | Length Less Shaft | Wgt. |
|-----|------|------|------|-------------|------|----------------|----------------|-------------|-------------------|------|
| 3/4 | 1.85 | 1.40 | 3450 | 208-230/115 | 60   | 6.0-5.5/11.0   | ESN1072        | 56J         | 11.01             | 27   |
| 1.0 | 1.85 | 1.85 | 3450 | 208-230/115 | 60   | 8.5-7.8/15.6   | ESN1102        | 56J         | 11.51             | 30   |
| 1.5 | 1.60 | 2.40 | 3450 | 208-230/115 | 60   | 11.0-10.2/20.4 | ESN1152        | 56J         | 12.01             | 33   |
| 2.0 | 1.35 | 2.70 | 3450 | 208-230     | 60   | 13.0-11.8      | ESN1202        | 56J         | 12.01             | 35   |
| 3.0 | 1.60 | 4.80 | 3450 | 208-230     | 60   | 20.6-19.0      | ESN1302        | 56J         | 14.01             | 47   |

### extreme-E Premium Energy Efficient, Low Service Factor, Up/Max Rated



| HP  | SF   | THP  | RPM  | Voltage     | Freq | SF Amps        | Catalog Number | Motor Frame | Length Less Shaft | Wgt. |
|-----|------|------|------|-------------|------|----------------|----------------|-------------|-------------------|------|
| 1.0 | 1.40 | 1.40 | 3450 | 208-230/115 | 60   | 6.0-5.5/11.0   | EUSN1102       | 56J         | 11.01             | 27   |
| 1.5 | 1.25 | 1.85 | 3450 | 208-230/115 | 60   | 8.5-7.8/15.6   | EUSN1152       | 56J         | 11.51             | 30   |
| 2.0 | 1.20 | 2.40 | 3450 | 208-230/115 | 60   | 11.0-10.2/20.4 | EUSN1202       | 56J         | 12.01             | 33   |
| 2.5 | 1.10 | 2.70 | 3450 | 208-230     | 60   | 13.0-11.8      | EUSN1252       | 56J         | 12.01             | 35   |
| 3.0 | 1.20 | 3.60 | 3450 | 208-230     | 60   | 16.0-14.8      | EUSN1302       | 56J         | 12.76             | 41   |

## HAYWARD TRISTAR® Replacement Square Flange 6.5" Frame Diameter, Category "T"

### FEATURES:

- Two Compartment
- 1081 Design
- Open Dripproof
- 300 Series Stainless Steel Shaft
- Shaft Threads - 1/2-20 UNF-2A
- Continuous Duty
- Thermally Protected
- 60°C Ambient
- Voltage Selection Device (Dual Voltage Only)
- 6.5" Diameter Frame
- Triple Bearing Protection
- Class B Insulated
- Sealed Ball Bearings



### extreme-E Premium Energy Efficient, Full Service Factor, Full Rated (Switch Design)



| HP  | SF   | THP  | RPM  | Voltage     | Freq | Amps           | Catalog Number | Motor Frame | Length Less Shaft | Wgt. |
|-----|------|------|------|-------------|------|----------------|----------------|-------------|-------------------|------|
| 1/2 | 1.98 | 0.98 | 3450 | 208-230/115 | 60   | 5.3-4.9/9.8    | ET3205         | 56Y         | 12.49             | 24   |
| 3/4 | 1.85 | 1.40 | 3450 | 208-230/115 | 60   | 7.0-6.2/12.4   | ET3207         | 56Y         | 12.74             | 26   |
| 1.0 | 1.85 | 1.85 | 3450 | 208-230/115 | 60   | 8.5-7.4/14.8   | ET3210         | 56Y         | 13.24             | 30   |
| 1.5 | 1.60 | 2.40 | 3450 | 208-230/115 | 60   | 11.2-10.2/20.4 | ET3215         | 56Y         | 13.74             | 34   |
| 2.0 | 1.35 | 2.70 | 3450 | 208-230     | 60   | 11.8-11.0      | ET3220         | 56Y         | 13.74             | 35   |
| 3.0 | 1.20 | 3.60 | 3450 | 208-230     | 60   | 16.0-14.8      | ET3230         | 56Y         | 14.49             | 44   |

### Standard Efficient, Total Horsepower Rated (50° Ambient, Switchless Design)



| HP  | SF   | THP  | RPM  | Voltage | Freq | Amps      | Catalog Number | Motor Frame | Length Less Shaft | Wgt. |
|-----|------|------|------|---------|------|-----------|----------------|-------------|-------------------|------|
| 3/4 | 1.25 | 0.98 | 3450 | 230/115 | 60   | 5.4/10.8  | ASB846         | 56Y         | 11.99             | 22   |
| 1.0 | 1.25 | 1.25 | 3450 | 230/115 | 60   | 7.0/14.0  | ASB847         | 56Y         | 12.49             | 25   |
| 1.5 | 1.10 | 1.65 | 3450 | 230/115 | 60   | 7.7/15.4  | ASB848         | 56Y         | 12.74             | 26   |
| 2.0 | 1.10 | 2.25 | 3450 | 230/115 | 60   | 10.8/21.6 | ASB858         | 56Y         | 13.74             | 33   |
| 2.5 | 1.04 | 2.60 | 3450 | 230     | 60   | 11.5      | ASB748         | 56Y         | 13.74             | 33   |
| 3.0 | 1.15 | 3.45 | 3450 | 208-230 | 60   | 14.8-13.5 | ASB844         | 56Y         | 14.24             | 40   |

\* California Energy Commission (CEC) Appliance Regulations (Title 20) compliant

\*\* Contact dealer for full conditions of operation

Catalog numbers are for competitive comparison purposes only.

extreme-E Extreme-E® represents our most efficient running, highest performing lines of motors.

† All marks shown within this document are properties of their respective owners.

## EZ48® Thru-Bolt Pool and Spa Motors 5.5" Frame Diameter



### FEATURES:

- Open Dripproof
- Sealed Ball Bearings
- Class B Insulated
- 300 Series Stainless Steel Shaft
- 50° C Ambient
- 3 O'clock Conduit
- Shaft Thread-3/8-16 UNC 2A RH
- Rigid Base
- Sealed Switch Contact
- Thermally Protected
- 1081 Design
- 3 1/2" Shaft Height
- **Discount symbol: DS-FPS**

### Single Speed - 1.5 Compartment

| HP  | SF   | RPM  | Voltage | Freq | SF Amps  | Catalog Number | Motor Frame | Length Less Shaft | Wgt. | List  |
|-----|------|------|---------|------|----------|----------------|-------------|-------------------|------|-------|
| 1/2 | 1.00 | 3450 | 115     | 60   | 7.5      | EZBN23         | 48Y         | 8.7               | 15   | \$155 |
| 3/4 | 1.00 | 3450 | 115     | 60   | 10.0     | EZBN24         | 48Y         | 8.7               | 17   | \$165 |
| 1.0 | 1.00 | 3450 | 115     | 60   | 12.0     | EZBN25         | 48Y         | 9.3               | 22   | \$182 |
| 1.5 | 1.00 | 3450 | 115     | 60   | 16.0     | EZBV35         | 48Y         | 9.8               | 25   | \$214 |
| 1.5 | 1.00 | 3450 | 230/115 | 60   | 7.7/15.4 | EZBN35         | 48Y         | 9.8               | 25   | \$214 |

### Two Speed - 1.5 Compartment

| HP     | SF   | RPM       | Voltage | Freq | SF Amps  | Catalog Number | Motor Frame | Length Less Shaft | Wgt. | List  |
|--------|------|-----------|---------|------|----------|----------------|-------------|-------------------|------|-------|
| 3/4/10 | 1.00 | 3450/1725 | 115     | 60   | 9.6/3.0  | EZBN36         | 48Y         | 10.6              | 19   | \$214 |
| 1.0/12 | 1.00 | 3450/1725 | 115     | 60   | 9.5/3.2  | EZBN37         | 48Y         | 10.6              | 21   | \$228 |
| 1.5/18 | 1.00 | 3450/1725 | 115     | 60   | 13.3/4.1 | EZBN50         | 48Y         | 10.6              | 25   | \$285 |

Rocker Switch Cover Assembly available:

Two Speed - LO-OFF-HI-X2975862300000L

One Speed - ON-OFF-X2975862200000L

## Thru-Bolt Spa Circulator Pump Motors 5.5" Frame Diameter

### FEATURES:

- Open Dripproof
- Thru Bolt Mount
- Class B Insulated
- Rigid Base
- 50° C Ambient
- 3 O'clock Conduit
- Thermally Protected
- 3 1/2" Shaft Height
- 1081, 1563 & 1795 Design
- Shaft Thread-3/8-16 UNC 2A RH
- Sealed Ball Bearings

### Single Speed - Spa Circulator Pump Motors

| HP   | SF   | RPM  | Voltage | Freq | SF Amps | Catalog Number | Motor Frame | Length Less Shaft | Wgt. |
|------|------|------|---------|------|---------|----------------|-------------|-------------------|------|
| 1/15 | 1.00 | 1725 | 115     | 60   | 1.3     | EV115          | 48Y         | 7.25              | 11.4 |
| 1/15 | 1.00 | 1725 | 230     | 60   | 0.63    | EV230          | 48Y         | 7.25              | 11.7 |

\* California Energy Commission (CEC) Appliance Regulations (Title 20) compliant

\*\* Contact dealer for full conditions of operation

Catalog numbers are for competitive comparison purposes only.

† All marks shown within this document are properties of their respective owners.

Rev. 10/2020

# Thru-Bolt Pool and Spa Motors

## 5.5" Frame Diameter



### FEATURES:

- Open Dripproof
- Thru Bolt Mount
- Class F Insulated
- 1081,1563 & 1795 Design
- Rigid Base
- Continuous Duty
- 3 O'clock Conduit
- Shaft Thread - 3/8-16 UNC 2A RH
- Thermally Protected
- 3 1/2" Shaft Height
- 50° C Ambient

### Single Speed

| HP  | SF   | RPM  | Voltage | Freq | SF Amps  | Catalog Number | Motor Frame | Length Less Shaft | Wgt. | Notes |
|-----|------|------|---------|------|----------|----------------|-------------|-------------------|------|-------|
| 1/2 | 1.00 | 3450 | 115     | 60   | 7.5      | AGL50FL1       | 48Y         | 7.8               | 15   | 2,5   |
| 3/4 | 1.00 | 3450 | 115     | 60   | 10.0     | AGL75FL1       | 48Y         | 7.8               | 17   | 2,5   |
| 3/4 | 1.00 | 3450 | 230     | 60   | 5.0      | AGH75FL1       | 48Y         | 7.8               | 17   | 2,5   |
| 1.0 | 1.00 | 3450 | 115     | 60   | 12.0     | AGL10FL1       | 48Y         | 8.4               | 22   | 2,5   |
| 1.0 | 1.00 | 3450 | 230     | 60   | 6.0      | AGH10FL1       | 48Y         | 8.4               | 22   | 2,5   |
| 1.5 | 1.00 | 3450 | 230/115 | 60   | 7.7/15.4 | AGD15FL1       | 48Y         | 8.9               | 25   | 2,5   |
| 2.0 | 1.00 | 3450 | 230     | 60   | 10.5     | SPH20FLC1      | 48Y         | 10.2              | 27   | 4     |
| 2.0 | 1.00 | 3450 | 230     | 60   | 8.7      | SPH20FL1       | 48Y         | 10.2              | 28   | 1     |
| 2.5 | 1.00 | 3450 | 230     | 60   | 10.0     | SPH25FL1       | 48Y         | 10.2              | 31   | 1     |
| 3.0 | 1.00 | 3450 | 230     | 60   | 12.0     | SPH30FL1       | 48Y         | 10.2              | 31   | 1     |

### Two Speed, Soft Start

| HP      | SF   | RPM       | Voltage | Freq | SF Amps  | Catalog Number | Motor Frame | Length Less Shaft | Wgt. | Notes |
|---------|------|-----------|---------|------|----------|----------------|-------------|-------------------|------|-------|
| 3/4/1.0 | 1.00 | 3450/1725 | 115     | 60   | 9.8/3.2  | AGL75FL2       | 48Y         | 7.8               | 20   | 2,3,5 |
| 1/1.2   | 1.00 | 3450/1725 | 115     | 60   | 10.3/3.8 | AGL10FL2S      | 48Y         | 9.6               | 23   | 2,5   |
| 1/1.2   | 1.00 | 3450/1725 | 230     | 60   | 6.1/1.8  | AGH10FL2       | 48Y         | 9.6               | 23   | 2,3,5 |
| 1.5/1.8 | 1.00 | 3450/1725 | 115     | 60   | 16.4/4.4 | AGL15FL2CS     | 48Y         | 10.2              | 26   | 2     |
| 1.5/1.8 | 1.00 | 3450/1725 | 230     | 60   | 8.0/2.5  | AGH15FL2CS     | 48Y         | 10.2              | 26   | 2     |
| 1.5/1.8 | 1.00 | 3450/1725 | 115     | 60   | 13.6/3.6 | *SPL15FL2S     | 48Y         | 10.2              | 27   | 1,4   |
| 2/2.5   | 1.00 | 3450/1725 | 230     | 60   | 10.5/3.0 | SPH20FL2CS     | 48Y         | 10.2              | 29   | 4     |
| 2/2.5   | 1.00 | 3450/1725 | 230     | 60   | 8.6/3.4  | *SPH20FL2S     | 48Y         | 10.2              | 30   | 1,4   |
| 2.5/3.3 | 1.00 | 3450/1725 | 230     | 60   | 11.0/3.3 | *SPH25FL2S     | 48Y         | 10.2              | 32   | 1,4   |
| 3/3.8   | 1.00 | 3450/1725 | 230     | 60   | 12.7/3.4 | *SPH30FL2S     | 48Y         | 10.6              | 35   | 1,4   |

### Single Speed, 50Hz, CE Conformance

| HP  | SF   | RPM       | Voltage | Freq  | SF Amps | Catalog Number | Motor Frame | Length Less Shaft | Wgt. | Notes |
|-----|------|-----------|---------|-------|---------|----------------|-------------|-------------------|------|-------|
| 1.0 | 1.00 | 3450/2850 | 220-240 | 60/50 | 6.3/6.0 | AGH10FL150     | 48Y         | 8.2               | 23   | 2,5   |

### Single Speed, Less Rigid Base

| HP  | SF   | RPM  | Voltage | Freq | SF Amps | Catalog Number | Motor Frame | Length Less Shaft | Wgt. | Notes |
|-----|------|------|---------|------|---------|----------------|-------------|-------------------|------|-------|
| 3/4 | 1.00 | 3450 | 115     | 60   | 10.0    | AGL75FL1NB     | 48Y         | 7.8               | 17   | 2,5   |
| 1.0 | 1.00 | 3450 | 115     | 60   | 12.0    | AGL10FL1NB     | 48Y         | 8.4               | 22   | 2,5   |

### Doughboy Replacement, Thru Bolt Mount, Less Rigid Base, Class B Insulated

| HP  | SF   | RPM  | Voltage | Freq | SF Amps | Catalog Number | Motor Frame | Length Less Shaft | Wgt. | Replacement Brand |
|-----|------|------|---------|------|---------|----------------|-------------|-------------------|------|-------------------|
| 1.0 | 1.00 | 3450 | 115     | 60   | 9.1     | AGL10FL1H1     | 48Y         | 9.4               | 12   | Power Pack I      |
| 1.0 | 1.00 | 3450 | 115     | 60   | 10.0    | AGL10FL1H2     | 48Y         | 9.6               | 12   | Power Pack II     |
| SPL | 1.00 | 3450 | 115     | 60   | 12.0    | AGL15FL1H2     | 48Y         | 10.1              | 15   | Power Pack II     |

#### NOTES:

- 1) Capacitor start/capacitor run (extra low running amps)
- 2) 416 Stainless Steel Extension
- 3) High Speed Start
- 4) 1563 & 1795 design only
- 5) Class B Insulated

\* California Energy Commission (CEC) Appliance Regulations (Title 20) compliant

\*\* Contact dealer for full conditions of operation

Catalog numbers are for competitive comparison purposes only.

Note: Toggle switch cover assembly available for two speed models - LO-OFF-HI- X2972706700000L

Toggle switch cover assembly available for single speed models - ON-OFF-X2972712900000L

# Thru-Bolt Pool & Spa 6.5" Frame Diameter



## FEATURES:

- Open Drip-Proof
- Thru-Bolt Mount
- Class F Insulated
- 1081 & 1563 Design
- Sealed Ball Bearing
- Rigid Base
- Thermally Protected
- 60°C Ambient
- 3 o'clock Conduit
- Premium Energy Efficient Design
- Shaft Thread - 3/8-16 UNC-2A
- **Discount Symbol: DS-FPS**

## extreme-E Premium Energy Efficient, Single Speed, Switchless Design



| HP  | SF   | THP  | RPM  | Voltage | Freq | SF Amps  | Catalog Number | Motor Frame | Length Less Shaft | Wgt. | Notes | List  |
|-----|------|------|------|---------|------|----------|----------------|-------------|-------------------|------|-------|-------|
| 1.5 | 1.00 | 1.50 | 3450 | 230/115 | 60   | 8.0/16.0 | ASB602         | 56Y         | 9.58              | 28   | 1     | \$255 |
| 2.0 | 1.00 | 2.00 | 3450 | 230     | 60   | 9.0      | ASB603         | 56Y         | 9.58              | 31   |       | \$280 |
| 2.5 | 1.00 | 2.50 | 3450 | 230     | 60   | 10.5     | ASB604         | 56Y         | 9.58              | 32   |       | \$312 |
| 3.0 | 1.00 | 3.00 | 3450 | 230     | 60   | 12.0     | ASB605         | 56Y         | 10.08             | 35   |       | \$363 |
| 4.0 | 1.00 | 4.00 | 3450 | 230     | 60   | 16.4     | ASB606         | 56Y         | 10.58             | 39   |       | \$414 |
| 5.0 | 1.00 | 5.00 | 3450 | 230     | 60   | 19.4     | ASB607         | 56Y         | 12.58             | 50   |       | \$476 |

## extreme-E Premium Energy Efficient, Two Speed, Soft Start



| HP      | SF   | THP     | RPM       | Voltage | Freq | SF Amps  | Catalog Number | Motor Frame | Length Less Shaft | Wgt. | Notes | List  |
|---------|------|---------|-----------|---------|------|----------|----------------|-------------|-------------------|------|-------|-------|
| 1.5/.18 | 1.00 | 1.5/.18 | 3450/1725 | 230     | 60   | 6.5/2.6  | ASB502         | 56Y         | 9.58              | 31   | *     | \$280 |
| 2.0/.25 | 1.00 | 2.0/.25 | 3450/1725 | 230     | 60   | 9.0/3.3  | ASB503         | 56Y         | 10.08             | 35   | *     | \$327 |
| 2.5/.33 | 1.00 | 2.5/.33 | 3450/1725 | 230     | 60   | 10.5/3.5 | ASB504         | 56Y         | 10.33             | 36   | *     | \$364 |
| 3.0/.38 | 1.00 | 3.0/.38 | 3450/1725 | 230     | 60   | 12.0/3.5 | ASB505         | 56Y         | 10.83             | 41   | *     | \$403 |
| 4.0/.50 | 1.00 | 4.0/.50 | 3450/1725 | 230     | 60   | 16.4/4.4 | ASB506         | 56Y         | 11.58             | 45   | *     | \$476 |
| 5.0/.63 | 1.00 | 5.0/.63 | 3450/1725 | 230     | 60   | 19.5/5.0 | TT507 X        | 56Y         | 12.08             | 48   |       | \$512 |

X = Non-Aquashield Mechanical Design

### NOTE:

1) Capacitor start design

\* California Energy Commission (CEC) Appliance Regulations (Title 20) compliant

\*\* Contact dealer for full conditions of operation

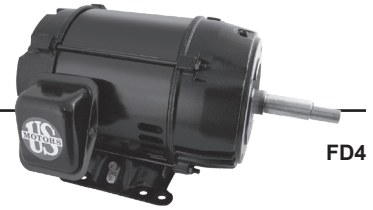
Catalog numbers are for competitive comparison purposes only.



Extreme-E® represents our most efficient running, highest performing lines of motors.

† All marks shown within this document are properties of their respective owners.

## Pool & Spa Motors - Close Coupled Pumps PENTAIR EQ SERIES<sup>®</sup> Replacement Pool Motors



FD4

Open Drip-Proof, Premium Efficient, Full Service Factor, Full Rated

### FEATURES:

- Special JMZ Mounting
- 40°C Ambient
- Continuous Duty
- Class F Insulated
- Open Drip-Proof
- Permanently Lubricated Ball Bearings
- Rigid Base
- Black Paint
- Special Ground Lug
- 300 Series Stainless Steel Shaft
- **Discount Symbol: DS-FPS**

| HP  | Phase | RPM  | Frame  | Voltage     | Catalog Number | SF   | Full Load |       | Wgt. | List    |
|-----|-------|------|--------|-------------|----------------|------|-----------|-------|------|---------|
|     |       |      |        |             |                |      | EFF       | PF    |      |         |
| 5   | 1     | 3600 | 184JMZ | 230         | EEQ500         | 1.15 | 88.0%     | 94.0% | 78   | \$1,424 |
|     | 3     | 3600 | 182JMZ | 208-230/460 | EEQK500        | 1.15 | 89.5%     | 85.8% | 50   | \$961   |
| 7.5 | 3     | 3600 | 184JMZ | 208-230/460 | EEQK750        | 1.15 | 88.5%     | 87.0% | 60   | \$1,109 |
|     | 1     | 3600 | 213JMZ | 230         | EEQ750         | 1.15 | 87.0%     | 92.3% | 70   | \$2,449 |
| 10  | 3     | 3600 | 213JMZ | 208-230/460 | EEQK1000       | 1.15 | 90.2%     | 79.2% | 90   | \$1,468 |
| 15  | 3     | 3600 | 215JMZ | 208-230/460 | EEQK1500       | 1.15 | 91.0%     | 82.0% | 105  | \$1,635 |

Totally Enclosed Fan Cooled, Premium Efficient, Full Service Factor, Full Rated

### FEATURES:

- Special JMZ Mounting
- 40°C Ambient
- Continuous Duty
- Class F Insulated
- Totally Enclosed Fan Cooled
- Permanently Lubricated Ball Bearings
- Rigid Base
- Black Paint
- Special Ground Lug
- 300 Series Stainless Steel Shaft Extension
- **Discount Symbol: DS-FPS**



UT4

| HP  | Phase | RPM  | Frame  | Voltage     | Catalog Number | List | Full Load |       | Wgt. | List    |
|-----|-------|------|--------|-------------|----------------|------|-----------|-------|------|---------|
|     |       |      |        |             |                |      | EFF       | PF    |      |         |
| 5   | 3     | 3600 | 184JMZ | 208-230/460 | EEQKT500       | 1.25 | 88.5%     | 87.1% | 70   | \$1,067 |
| 7.5 | 3     | 3600 | 213JMZ | 208-230/460 | EEQKT750       | 1.25 | 91.0%     | 86.8% | 105  | \$1,363 |
| 10  | 3     | 3600 | 215JMZ | 208-230/460 | EEQKT1000      | 1.25 | 91.0%     | 87.6% | 120  | \$1,630 |
| 15  | 3     | 3600 | 215JMZ | 208-230/460 | EEQKT1500      | 1.25 | 91.0%     | 85.3% | 120  | \$1,815 |

# Special Application Close Coupled Pump Three Phase Totally Enclosed Fan Cooled (TEFC) Premium Efficient



UT4

## APPLICATIONS:

For the specific requirements of centrifugal pumps where the pump impeller is mounted directly on the motor shaft.  
Used in damp, dusty or dirty environments.

## FEATURES:

- Class F Insulation, Class B Rise At Full Load On 60 Hertz Sine Wave Power
- Cast Iron Frame 280 & Up, Aluminum 180-250, Rolled Steel 140
- Cast Iron End Brackets 280 & Up, 250 Frame and
- Lower Has Aluminum With Steel Bearing Inserts
- 40°C Ambient, NEMA®† Design B Performance On 60 Hertz Sine Wave Power
- Regreaseable Shaft End Bearing 180 Frame & Up
- Double Shielded Bearings
- Removable Base (180 - 250 Frame)
- Lifting Provisions 180 Frame & Up
- "JM" Shaft For Mechanical Seal
- "CE" Mark On Nameplate
- Conversion Kits: Canopy Kits

## JM Shaft For Mechanical Seal UTE4

| HP    | RPM  | Voltage     | Frame | Catalog Number | List    | Discount Symbol | SF   | "C" Dim. (inches) | Ship Wt (lbs) | Full Load Eff. | Full Load Amps | Notes |
|-------|------|-------------|-------|----------------|---------|-----------------|------|-------------------|---------------|----------------|----------------|-------|
| 1     | 3600 | 230/460     | 143JM | UJ1P1BM        | \$529   | DS-3PT          | 1.25 | 14.3              | 30            | 81.5           | 1.4            |       |
|       | 3600 | 575         | 143JM | UJ1P1GM        | \$529   | DS-3PT          | 1.25 | 14.3              | 30            | 81.5           | 1.1            |       |
|       | 1800 | 208-230/460 | 143JM | UJ1P2DM        | \$518   | DS-3PT          | 1.25 | 15.3              | 30            | 85.5           | 3.1-3/1.5      | 03    |
|       | 1800 | 575         | 143JM | UJ1P2GM        | \$518   | DS-3PT          | 1.25 | 15.3              | 30            | 85.5           | 1.1            |       |
| 1 1/2 | 3600 | 208-230/460 | 143JM | UJ32P1DM       | \$584   | DS-3PT          | 1.25 | 15.3              | 30            | 84.0           | 4.1-3.8/1.9    | 03    |
|       | 1800 | 208-230/460 | 145JM | UJ32P2DM       | \$565   | DS-3PT          | 1.25 | 15.3              | 35            | 86.5           | 4.5-4.3/2.1    | 03    |
|       | 3600 | 230/460     | 143JM | UJ32P1BM       | \$584   | DS-3PT          | 1.25 | 14.3              | 30            | 84.0           | 3.9/1.9        |       |
|       | 3600 | 575         | 143JM | UJ32P1GM       | \$584   | DS-3PT          | 1.25 | 14.3              | 30            | 84.0           | 1.6            |       |
|       | 1800 | 230/460     | 145JM | UJ32P2BM       | \$565   | DS-3PT          | 1.25 | 14.3              | 42            | 86.5           | 4.2/2.1        |       |
|       | 1800 | 575         | 145JM | UJ32P2GM       | \$565   | DS-3PT          | 1.25 | 14.3              | 30            | 86.5           | 1.7            |       |
| 2     | 3600 | 208-230/460 | 145JM | UJ2P1DM        | \$622   | DS-3PT          | 1.25 | 15.3              | 35            | 86.5           | 5.4-4.9/2.5    | 03    |
|       | 3600 | 575         | 145JM | UJ2P1GM        | \$622   | DS-3PT          | 1.25 | 14.3              | 42            | 86.5           | 2              |       |
|       | 1800 | 208-230/460 | 145JM | UJ2P2DM        | \$611   | DS-3PT          | 1.25 | 15.3              | 35            | 86.5           | 5.9-5.7/2.8    | 03    |
|       | 1800 | 575         | 145JM | UJ2P2GM        | \$611   | DS-3PT          | 1.25 | 14.3              | 35            | 86.5           | 2.3            |       |
| 3     | 3600 | 208-230/460 | 182JM | UJ3P1DM        | \$886   | DS-3PT          | 1.25 | 17.8              | 60            | 87.5           | 8.4-7.8/3.9    | 03    |
|       | 3600 | 208-230/460 | 145JM | UJ3P1DFM       | \$738   | DS-3PT          | 1.25 | 15.3              | 35            | 86.5           | 8.1-7.2/3.6    | 03,14 |
|       | 3600 | 575         | 145JM | UJ3P1GFM       | \$738   | DS-3PT          | 1.25 | 15.3              | 35            | 86.5           | 2.9            | 14    |
|       | 3600 | 575         | 182JM | UJ3P1GM        | \$886   | DS-3PT          | 1.25 | 17.8              | 100           | 87.5           | 3.1            |       |
|       | 1800 | 208-230/460 | 182JM | UJ3P2DM        | \$795   | DS-3PT          | 1.25 | 17.8              | 60            | 89.5           | 8.4-7.8/3.9    | 03    |
|       | 1800 | 575         | 182JM | UJ3P2GM        | \$795   | DS-3PT          | 1.25 | 17.8              | 60            | 89.5           | 3.1            |       |
| 5     | 3600 | 208-230/460 | 184JM | UJ5P1DM        | \$1,088 | DS-3PT          | 1.25 | 17.8              | 70            | 88.5           | 13.4-12.2/6.1  | 03    |
|       | 3600 | 575         | 184JM | UJ5P1GM        | \$1,088 | DS-3PT          | 1.25 | 17.8              | 100           | 88.5           | 4.9            |       |
|       | 1800 | 208-230/460 | 184JM | UJ5P2DM        | \$908   | DS-3PT          | 1.25 | 17.8              | 70            | 90.2           | 13.6-12.3/6.2  | 03    |
|       | 1800 | 575         | 184JM | UJ5P2GM        | \$908   | DS-3PT          | 1.25 | 17.8              | 70            | 89.5           | 5              |       |
| 7 1/2 | 1800 | 208-230/460 | 213JM | UJ7P2DM        | \$1,228 | DS-3PT          | 1.25 | 19.9              | 105           | 91.7           | 20.0-18.2/9.1  | 03    |
|       | 3600 | 208-230/460 | 184JM | UJ7P1DFM       | \$1,213 | DS-3PT          | 1.25 | 17.8              | 70            | 90.2           | 19.8-18.9/9.4  | 03,14 |
|       | 3600 | 208-230/460 | 213JM | UJ7P1DM        | \$1,345 | DS-3PT          | 1.25 | 19.9              | 105           | 91.0           | 19.9-17.8/8.9  | 03    |
|       | 3600 | 575         | 184JM | UJ7P1GFM       | \$1,213 | DS-3PT          | 1.25 | 17.8              | 70            | 89.5           | 7.1            | 14    |
|       | 3600 | 575         | 213JM | UJ7P1GM        | \$1,345 | DS-3PT          | 1.25 | 19.8              | 240           | 91.0           | 7.1            |       |
|       | 1800 | 575         | 213JM | UJ7P2GM        | \$1,228 | DS-3PT          | 1.25 | 19.9              | 105           | 91.7           | 7.2            |       |
| 10    | 3600 | 208-230/460 | 215JM | UJ10P1DM       | \$1,556 | DS-3PT          | 1.25 | 19.9              | 120           | 91.0           | 26.4-23.5/11.7 | 03    |
|       | 3600 | 575         | 215JM | UJ10P1GM       | \$1,556 | DS-3PT          | 1.25 | 21.4              | 166           | 91.0           | 9.4            |       |
|       | 1800 | 208-230/460 | 215JM | UJ10P2DM       | \$1,458 | DS-3PT          | 1.25 | 21.4              | 120           | 91.7           | 26.5-23.9/12   | 03    |
|       | 1800 | 575         | 215JM | UJ10P2GM       | \$1,458 | DS-3PT          | 1.25 | 21.4              | 120           | 91.7           | 9.6            |       |
| 15    | 3600 | 208-230/460 | 215JM | UJ15P1DFM      | \$1,801 | DS-3PT          | 1.25 | 21.4              | 120           | 91.0           | 39-36/18       | 03,14 |
|       | 3600 | 208-230/460 | 254JM | UJ15P1DM       | \$2,239 | DS-3PT          | 1.25 | 25.4              | 180           | 91.0           | 39-35/17.7     | 03,14 |
|       | 3600 | 575         | 215JM | UJ15P1GFM      | \$1,801 | DS-3PT          | 1.25 | 21.4              | 120           | 91.7           | 14.4           | 14    |
|       | 3600 | 575         | 254JM | UJ15P1GM       | \$2,239 | DS-3PT          | 1.25 | 25.4              | 180           | 91.0           | 14.1           |       |
| 20    | 1800 | 208-230/460 | 254JM | UJ15P2DM       | \$2,131 | DS-3PT          | 1.25 | 25.4              | 180           | 92.4           | 40-37/18.4     | 03    |
|       | 1800 | 575         | 254JM | UJ15P2GM       | \$2,131 | DS-3PT          | 1.25 | 25.4              | 180           | 92.4           | 14.6           |       |
|       | 3600 | 208-230/460 | 256JM | UJ20P1DM       | \$2,730 | DS-3PT          | 1.25 | 27.1              | 230           | 91.7           | 51-46/23       | 03,14 |
|       | 3600 | 575         | 256JM | UJ20P1GM       | \$2,730 | DS-3PT          | 1.25 | 27.1              | 230           | 91.0           | 18.5           |       |

Note 03 660/50 Hz rated with no derate on HP; 230/460 volt 60 Hz ratings operate on 190/380 volt 50 Hz, 460V 60 Hz ratings operate on 380V 50 Hz; Full 60 & 50 Hz data on Nameplate

Note 14 NEMA®† Design A

# Special Application Close Coupled Pump Three Phase Totally Enclosed Fan Cooled (TEFC) NEMA Premium Efficient



UT4

## UTE4 (continued)

| HP | RPM  | Voltage     | Frame | Catalog Number | List    | Discount Symbol | SF   | "C" Dim. (inches) | Ship Wt (lbs) | Full Load Eff. | Full Load Amps | Notes |
|----|------|-------------|-------|----------------|---------|-----------------|------|-------------------|---------------|----------------|----------------|-------|
| 20 | 1800 | 208-230/460 | 256JM | UJ20P2DM       | \$2,463 | DS-3PT          | 1.25 | 27.1              | 230           | 93.0           | 53-47/23.5     | 03    |
|    | 1800 | 575         | 256JM | UJ20P2GM       | \$2,463 | DS-3PT          | 1.25 | 27.1              | 230           | 93.0           | 19             |       |
| 25 | 3600 | 208-230/460 | 284JM | UJ25P1DM       | \$3,595 | DS-3PT          | 1.25 | 29.1              | 280           | 91.7           | 65.0-57.0/28.4 | 03,14 |
|    | 3600 | 208-230/460 | 256JM | UJ25P1DFM      | \$3,235 | DS-3PT          | 1.15 | 27.1              | 230           | 91.7           | 64-57/28.3     | 03,14 |
|    | 3600 | 575         | 256JM | UJ25P1GFM      | \$3,235 | DS-3PT          | 1.15 | 27.1              | 230           | 91.7           | 22.6           | 14    |
|    | 3600 | 575         | 284JM | HJ25P1GM       | \$3,595 | DS-3PT          | 1.15 | 27.9              | 380           | 91.7           | 23             |       |
| 30 | 1800 | 208-230/460 | 284JM | UJ25P2DM       | \$3,237 | DS-3PT          | 1.25 | 29.1              | 280           | 93.6           | 65-59/29.3     | 03    |
|    | 1800 | 575         | 284JM | HJ25P2GM       | \$3,237 | DS-3PT          | 1.15 | 27.9              | 380           | 93.6           | 23             |       |
|    | 3600 | 460         | 286JM | HJ30P1BM       | \$4,383 | DS-3PT          | 1.15 | 27.9              | 275           | 91.7           | 69/34          |       |
|    | 3600 | 575         | 286JM | HJ30P1GM       | \$4,383 | DS-3PT          | 1.15 | 27.9              | 410           | 91.7           | 27.6           |       |
|    | 1800 | 208-230/460 | 286JM | UJ30P2DM       | \$3,666 | DS-3PT          | 1.25 | 29.1              | 300           | 93.6           | 78.0-70.0/35.0 | 03    |
|    | 1800 | 575         | 286JM | HJ30P2GM       | \$3,666 | DS-3PT          | 1.15 | 27.9              | 410           | 93.6           | 27.6           |       |

## JP Shaft For Packing Seal

| HP    | RPM  | Voltage     | Frame | Catalog Number | List    | Discount Symbol | SF   | "C" Dim. (inches) | Ship Wt (lbs) | Full Load Eff. | Full Load Amps | Notes |
|-------|------|-------------|-------|----------------|---------|-----------------|------|-------------------|---------------|----------------|----------------|-------|
| 1     | 1800 | 208-230/460 | 143JP | UJ1P2DP        | \$518   | DS-3PT          | 1.25 | 18.3              | 30            | 85.5           | 3.1-3/1.5      | 03    |
|       | 1800 | 575         | 143JP | UJ1P2GP        | \$518   | DS-3PT          | 1.25 | 17.3              | 30            | 85.5           | 1.1            |       |
| 1 1/2 | 1800 | 208-230/460 | 145JP | UJ3P2DP        | \$565   | DS-3PT          | 1.25 | 18.3              | 35            | 86.5           | 4.5-4.3/2.1    | 03    |
|       | 1800 | 575         | 145JP | UJ3P2GP        | \$565   | DS-3PT          | 1.25 | 17.3              | 30            | 86.5           | 1.7            |       |
| 2     | 3600 | 208-230/460 | 145JP | UJ2P1DP        | \$622   | DS-3PT          | 1.25 | 18.3              | 35            | 86.5           | 5.4-4.9/2.5    | 03    |
|       | 1800 | 208-230/460 | 145JP | UJ2P2DP        | \$611   | DS-3PT          | 1.25 | 18.3              | 35            | 86.5           | 5.9-5.7/2.8    | 03    |
|       | 1800 | 575         | 145JP | UJ2P2GP        | \$611   | DS-3PT          | 1.25 | 17.3              | 35            | 86.5           | 2.2            |       |
| 3     | 3600 | 208-230/460 | 145JP | UJ3P1DFP       | \$738   | DS-3PT          | 1.25 | 18.3              | 35            | 86.5           | 8.1-7.2/3.6    | 03,14 |
|       | 3600 | 208-230/460 | 182JP | UJ3P1DP        | \$886   | DS-3PT          | 1.25 | 20.9              | 60            | 87.5           | 8.4-7.8/3.9    | 03    |
|       | 1800 | 208-230/460 | 182JP | UJ3P2DP        | \$795   | DS-3PT          | 1.25 | 20.9              | 60            | 89.5           | 8.4-7.8/3.9    | 03    |
|       | 1800 | 575         | 182JP | UJ3P2GP        | \$795   | DS-3PT          | 1.25 | 20.9              | 60            | 89.5           | 3.1            |       |
| 5     | 3600 | 208-230/460 | 184JP | UJ5P1DP        | \$1,088 | DS-3PT          | 1.25 | 20.9              | 70            | 88.5           | 13.4-12.2/6.1  | 03    |
|       | 1800 | 208-230/460 | 184JP | UJ5P2DP        | \$908   | DS-3PT          | 1.25 | 21.6              | 70            | 90.2           | 13.6-12.3/6.2  | 03    |
|       | 1800 | 575         | 184JP | UJ5P2GP        | \$908   | DS-3PT          | 1.25 | 20.9              | 70            | 89.5           | 5              |       |
| 7 1/2 | 3600 | 208-230/460 | 184JP | UJ7P1DFP       | \$1,210 | DS-3PT          | 1.25 | 20.9              | 70            | 90.2           | 19.8-18.9/9.4  | 03,14 |
|       | 3600 | 208-230/460 | 213JP | UJ7P1DP        | \$1,345 | DS-3PT          | 1.25 | 23.8              | 105           | 91.0           | 19.9-17.8/8.9  | 03    |
|       | 1800 | 208-230/460 | 213JP | UJ7P2DP        | \$1,228 | DS-3PT          | 1.25 | 23.8              | 105           | 91.7           | 20-18.2/9.1    | 03    |
|       | 1800 | 575         | 213JP | UJ7P2GP        | \$1,228 | DS-3PT          | 1.25 | 23.8              | 105           | 91.7           | 7.2            |       |
| 10    | 3600 | 208-230/460 | 215JP | UJ10P1DP       | \$1,556 | DS-3PT          | 1.25 | 25.3              | 120           | 91.0           | 26.4-23.5/11.7 | 03    |
|       | 1800 | 208-230/460 | 215JP | UJ10P2DP       | \$1,458 | DS-3PT          | 1.25 | 25.3              | 120           | 91.7           | 26.5-23.9/12   | 03    |
|       | 1800 | 575         | 215JP | UJ10P2GP       | \$1,458 | DS-3PT          | 1.25 | 25.3              | 120           | 91.7           | 9.6            |       |
| 15    | 3600 | 208-230/460 | 215JP | UJ15P1DFP      | \$1,801 | DS-3PT          | 1.25 | 25.3              | 120           | 91.0           | 39-36/18       | 03,14 |
|       | 3600 | 208-230/460 | 254JP | UJ15P1DP       | \$2,239 | DS-3PT          | 1.25 | 28.3              | 180           | 91.0           | 39-35/17.7     | 03,14 |
|       | 1800 | 208-230/460 | 254JP | UJ15P2DP       | \$2,131 | DS-3PT          | 1.25 | 28.3              | 180           | 92.4           | 40-37/18.4     | 03    |
|       | 1800 | 575         | 254JP | UJ15P2GP       | \$2,131 | DS-3PT          | 1.25 | 28.3              | 180           | 92.4           | 14.6           |       |
| 20    | 3600 | 208-230/460 | 256JP | UJ20P1DP       | \$2,730 | DS-3PT          | 1.25 | 30.0              | 230           | 91.7           | 51-46/23       | 03,14 |
|       | 1800 | 208-230/460 | 256JP | UJ20P2DP       | \$2,463 | DS-3PT          | 1.25 | 30.0              | 230           | 93.0           | 53-47/23.5     | 03    |
|       | 1800 | 575         | 256JP | UJ20P2GP       | \$2,463 | DS-3PT          | 1.25 | 30.0              | 230           | 93.0           | 19             |       |
| 25    | 3600 | 208-230/460 | 256JP | UJ25P1DFP      | \$3,235 | DS-3PT          | 1.15 | 30.0              | 230           | 91.7           | 64-57/28.3     | 03,14 |
|       | 3600 | 208-230/460 | 284JP | UJ25P1DP       | \$3,595 | DS-3PT          | 1.25 | 32.0              | 280           | 91.7           | 65-57/28.4     | 03    |
|       | 1800 | 208-230/460 | 284JP | UJ25P2DP       | \$3,237 | DS-3PT          | 1.25 | 32.0              | 280           | 93.6           | 65-59/29.3     | 03    |
|       | 1800 | 575         | 284JP | HJ25P2GP       | \$3,237 | DS-3PT          | 1.15 | 30.8              | 380           | 93.6           | 23             |       |
| 30    | 1800 | 208-230/460 | 286JP | UJ30P2DP       | \$3,666 | DS-3PT          | 1.25 | 32.0              | 300           | 93.6           | 78-70/35       | 03    |
|       | 1800 | 575         | 286JP | HJ30P2GP       | \$3,666 | DS-3PT          | 1.15 | 30.8              | 410           | 93.6           | 27.6           |       |

Note 03 660/50 Hz rated with no derate on HP; 230/460 volt 60 Hz ratings operate on 190/380 volt 50 Hz, 460V 60 Hz ratings operate on 380V 50 Hz; Full 60 & 50 Hz data on Nameplate

Note 14 NEMA®T Design A

† All marks shown within this document are properties of their respective owners.



## Special Application Close Coupled Pump Three Phase Totally Enclosed Fan Cooled (TEFC) Premium Efficient



UT4

### Westcoast Shaft - Footed

| HP    | RPM  | Voltage     | Frame  | Catalog Number | List    | Discount Symbol | SF   | "C" Dim. (inches) | Ship Wt (lbs) | Full Load Eff. | Full Load Amps | Notes |
|-------|------|-------------|--------|----------------|---------|-----------------|------|-------------------|---------------|----------------|----------------|-------|
| 7 1/2 | 3600 | 208-230/460 | 213TCZ | UJ7P1DJ        | \$1,345 | DS-3PT          | 1.25 | 22.8              | 105           | 91.0           | 19.9-17.8/8.9  | 03    |
|       | 1800 | 208-230/460 | 213TCZ | UJ7P2DJ        | \$1,228 | DS-3PT          | 1.25 | 22.8              | 105           | 91.7           | 20-18.2/9.1    | 03    |
| 10    | 3600 | 208-230/460 | 215TCZ | UJ10P1DJ       | \$1,556 | DS-3PT          | 1.25 | 24.3              | 120           | 91.0           | 26.4-23.5/11.7 | 03    |
|       | 3600 | 208-230/460 | 215TCZ | UJ10P2DJ       | \$1,458 | DS-3PT          | 1.25 | 24.3              | 120           | 91.0           | 26.4-23.5/11.7 | 03    |
| 15    | 3600 | 208-230/460 | 215TCZ | UJ15P1DFJ      | \$1,801 | DS-3PT          | 1.25 | 24.3              | 120           | 91.0           | 39-36/18       | 03,14 |

Note 03 60/50 Hz rated with no derate on HP; 230/460 volt 60 Hz ratings operate on 190/380 volt 50 Hz, 460V 60 Hz ratings operate on 380V 50 Hz; Full 60 & 50 Hz data on Nameplate

Note 14 NEMA† Design A

## Special Application Close Coupled Pump Three Phase Open Dripproof (ODP) NEMA Premium Efficient



FD4

### APPLICATIONS:

For the specific requirements of centrifugal pumps where the pump impeller is mounted directly on the motor shaft. Used where dirt and moisture are minimal.

### FEATURES:

- Class F Insulation, Class B Rise At Service Factor
- Rolled Steel Frame
- Aluminum End Shields 140-250, Cast Iron End Shields 280-320
- Oversized Ball Bearings w/ Locked Shaft End Construction
- Premasked Mylar Nameplate (with "CE" Mark)
- F1 Assembly Position
- Regreasable Bearings 180 Frame & Up, Lifting Provisions 210 Frame & Up
- Double Shielded Bearings
- 40°C Ambient, NEMA† Design B Performance On 60 Hertz Sine Wave Power
- "JM" Shaft For Mechanical Seal
- "JM" Shaft on 210 Frame and Smaller; "JP" Shaft on 250 and 280 Frame
- Conversion Kits: Canopy Kits

### JM Shaft - Footed DE1

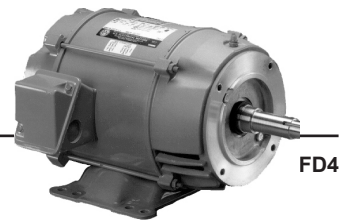
| HP    | RPM  | Voltage     | Frame | Catalog Number | List  | Discount Symbol | SF   | "C" Dim. (inches) | Ship Wt. (lbs) | Full Load Eff. | Full Load Amps | Notes |
|-------|------|-------------|-------|----------------|-------|-----------------|------|-------------------|----------------|----------------|----------------|-------|
| 3/4   | 1200 | 208-230/460 | 143JM | DJ34P3DM       | \$655 | DS-3POP         | 1.15 | 15.4              | 30             | 80.0           | 2.8-2.8/1.4    | 03    |
| 1     | 1800 | 200         | 143JM | DJ1P2HM        | \$487 | DS-3POP         | 1.15 | 15.4              | 30             | 85.5           | 3.6            |       |
|       | 1800 | 208-230/460 | 143JM | DJ1P2DM        | \$487 | DS-3POP         | 1.15 | 15.4              | 30             | 85.5           | 3.1-3.1/1.5    | 03    |
|       | 1200 | 208-230/460 | 145JM | DJ1P3DM        | \$655 | DS-3POP         | 1.15 | 15.4              | 35             | 82.5           | 4-4/2          | 03    |
| 1 1/2 | 1800 | 200         | 145JM | DJ32P2HM       | \$513 | DS-3POP         | 1.15 | 14.75             | 35             | 85.5           | 4.8            |       |
|       | 3600 | 208-230/460 | 143JM | DJ32P1DM       | \$519 | DS-3POP         | 1.15 | 15.38             | 30             | 85.5           | 4.2-3.8/1.9    | 03    |
|       | 1800 | 200         | 145JM | DJ32P2HM       | \$513 | DS-3POP         | 1.15 | 14.8              | 35             | 86.5           | 4.8            | 03    |
|       | 1800 | 208-230/460 | 145JM | DJ32P2DM       | \$513 | DS-3POP         | 1.15 | 14.8              | 35             | 86.5           | 4.4-4.1/2.1    | 03    |
|       | 1200 | 208-230/460 | 182JM | DJ32P3DM       | \$660 | DS-3POP         | 1.15 | 17.4              | 50             | 86.5           | 5-5/2.5        |       |
| 2     | 3600 | 208-230/460 | 145JM | DJ2P1DM        | \$567 | DS-3POP         | 1.15 | 15.38             | 35             | 85.5           | 5.5-5/2.5      | 03    |
|       | 1800 | 200         | 145JM | DJ2P2HM        | \$563 | DS-3POP         | 1.15 | 15.4              | 35             | 86.5           | 6.3            |       |
|       | 1800 | 208-230/460 | 145JM | DJ2P2DM        | \$563 | DS-3POP         | 1.15 | 14.8              | 35             | 86.5           | 5.9-5.6/2.8    | 03    |
|       | 1800 | 575         | 145JM | DJ2P2GM        | \$563 | DS-3POP         | 1.15 | 15.38             | 35             | 86.5           | 2.2            |       |
|       | 1200 | 208-230/460 | 184JM | DJ2P3DM        | \$739 | DS-3POP         | 1.15 | 20.5              | 60             | 87.5           | 6.5-6.3/3.1    |       |
| 3     | 3600 | 208-230/460 | 145JM | DJ3P1DM        | \$582 | DS-3POP         | 1.15 | 15.4              | 35             | 85.5           | 8.3-7.4/3.7    | 03    |
|       | 1800 | 200         | 182JM | DJ3P2HM        | \$598 | DS-3POP         | 1.15 | 17.4              | 50             | 89.5           | 9              |       |
|       | 1800 | 208-230/460 | 182JM | DJ3P2DM        | \$598 | DS-3POP         | 1.15 | 17.4              | 50             | 89.5           | 8.4-7.8/3.9    |       |
|       | 1200 | 208-230/460 | 213JM | DJ3P3DM        | \$941 | DS-3POP         | 1.15 | 17.8              | 90             | 88.5           | 9.4-8.9/4.5    |       |

Note 03 60/50 Hz rated with no derate on HP; 230/460 volt 60 Hz ratings operate on 190/380 volt 50 Hz, 460V 60 Hz ratings operate on 380V 50 Hz; Full 60 & 50 Hz data on Nameplate

Note 14 NEMA† Design A

† All marks shown within this document are properties of their respective owners.

# Special Application Close Coupled Pump Three Phase Open Dripproof (ODP) NEMA Premium Efficient



## DE1 (continued)

| HP    | RPM  | Voltage     | Frame | Catalog Number | List    | Discount Symbol | SF   | "C" Dim. (inches) | Ship Wt. (lbs) | Full Load Eff. | Full Load Amps | Notes |
|-------|------|-------------|-------|----------------|---------|-----------------|------|-------------------|----------------|----------------|----------------|-------|
| 5     | 3600 | 200         | 182JM | DJ5P1HM        | \$620   | DS-3POP         | 1.15 | 17.4              | 50             | 88.5           | 14.1           |       |
|       | 3600 | 208-230/460 | 182JM | DJ5P1DM        | \$620   | DS-3POP         | 1.15 | 16.1              | 50             | 88.5           | 13.5-12.3/6.2  |       |
|       | 1800 | 200         | 184JM | DJ5P2HM        | \$645   | DS-3POP         | 1.15 | 20.5              | 60             | 89.5           | 14.7           |       |
|       | 1800 | 208-230/460 | 184JM | DJ5P2DM        | \$645   | DS-3POP         | 1.15 | 16.0              | 60             | 89.5           | 13.8-13/6.5    | 03    |
|       | 1800 | 575         | 184JM | DJ5P2DGM       | \$645   | DS-3POP         | 1.15 | 16.0              | 60             | 89.5           | 4.9            |       |
| 7 1/2 | 1200 | 208-230/460 | 215JM | DJ5P3DM        | \$1,234 | DS-3POP         | 1.15 | 19.3              | 105            | 89.5           | 15.2-14.5/7.3  |       |
|       | 3600 | 208-230/460 | 184JM | DJ7P1DM        | \$968   | DS-3POP         | 1.15 | 17.4              | 60             | 88.5           | 20.5-18.1/9.1  | 03    |
|       | 1800 | 200         | 213JM | DJ7P2HM        | \$943   | DS-3POP         | 1.15 | 17.8              | 90             | 91.0           | 21.4           |       |
|       | 1800 | 208-230/460 | 213JM | DJ7P2DM        | \$943   | DS-3POP         | 1.15 | 17.8              | 90             | 91.0           | 20.2-18.5/9.3  | 03    |
|       | 1800 | 575         | 213JM | DJ7P2GM        | \$943   | DS-3POP         | 1.15 | 17.75             | 90             | 91.0           | 7.3            |       |
| 10    | 3600 | 200         | 213JM | DJ10P1HM       | \$1,132 | DS-3POP         | 1.15 | 17.8              | 90             | 90.2           | 28             | 03    |
|       | 3600 | 208-230/460 | 213JM | DJ10P1DM       | \$1,132 | DS-3POP         | 1.15 | 17.8              | 90             | 90.2           | 27.1-24.3/12.2 | 03    |
|       | 3600 | 575         | 213JM | DJ10P1GM       | \$1,132 | DS-3POP         | 1.15 | 17.75             | 90             | 90.2           | 9.7            |       |
|       | 1800 | 200         | 215JM | DJ10P2HM       | \$1,147 | DS-3POP         | 1.15 | 19.3              | 105            | 91.7           | 28.1           | 03    |
|       | 1800 | 208-230/460 | 215JM | DJ10P2DM       | \$1,147 | DS-3POP         | 1.15 | 19.3              | 105            | 92.4           | 26.3-23.8/11.9 | 03    |
| 15    | 3600 | 208-230/460 | 215JM | DJ15P1DM       | \$1,555 | DS-3POP         | 1.15 | 19.25             | 105            | 90.2           | 40-36/18       | 03    |
|       | 1800 | 208-230/460 | 254JM | DJ15P2DM       | \$1,712 | DS-3POP         | 1.15 | 24.60             | 105            | 93.0           | 40-36/18.2     |       |
| 20    | 3600 | 208-230/460 | 254JM | DJ20P1DM       | \$1,874 | DS-3POP         | 1.15 | 24.60             | 170            | 91.7           | 52-46/23.1     |       |
|       | 3600 | 575         | 254JM | DJ20P1GM       | \$1,874 | DS-3POP         | 1.15 | 24.60             | 170            | 91.0           | 18.7           |       |
|       | 1800 | 208-230/460 | 256JM | DJ15P2DM       | \$1,970 | DS-3POP         | 1.15 | 25.20             | 195            | 93.0           | 54-49/24.4     |       |
| 25    | 3600 | 208-230/460 | 256JM | DJ25P1DM       | \$2,567 | DS-3POP         | 1.15 | 25.20             | 200            | 91.7           | 65-57/28.7     |       |
|       | 1800 | 208-230/460 | 284JM | DJ25P2DM       | \$2,435 | DS-3POP         | 1.15 | 25.75             | 225            | 93.6           | 64-58/29       | 03    |
| 30    | 3600 | 208-230/460 | 284JM | DJ30P1DM       | \$2,901 | DS-3POP         | 1.15 | 25.75             | 225            | 92.4           | 79-68/34       | 03    |
|       | 1800 | 208-230/460 | 286JM | DJ30P2DM       | \$2,892 | DS-3POP         | 1.15 | 25.75             | 250            | 94.1           | 77-69/34       | 03    |
| 40    | 3600 | 208-230/460 | 286JM | DJ40P1DM       | \$3,171 | DS-3POP         | 1.15 | 25.75             | 250            | 93.0           | 104-90/45      | 03    |
|       | 3600 | 575         | 286JM | DJ40P1GM       | \$3,171 | DS-3POP         | 1.15 | 25.75             | 250            | 93.0           | 36             |       |
|       | 1800 | 208-230/460 | 324JM | DJ40P2DM       | \$3,178 | DS-3POP         | 1.15 | 27.50             | 385            | 94.1           | 102-91/46      | 03    |
| 50    | 3600 | 208-230/460 | 324JM | DJ50P1DM       | \$3,567 | DS-3POP         | 1.15 | 27.50             | 385            | 93.0           | 130-117/59     | 03    |
|       | 1800 | 208-230/460 | 326JM | DJ50P2DM       | \$3,725 | DS-3POP         | 1.15 | 27.50             | 460            | 94.5           | 126-113/56     | 03    |
| 60    | 3600 | 208-230/460 | 326JM | DJ60P1DM       | \$4,916 | DS-3POP         | 1.15 | 27.50             | 460            | 93.6           | 152-134/67     | 03    |

## JM Shaft - Footless

| HP    | RPM  | Voltage     | Frame | Catalog Number | List    | Discount Symbol | SF   | "C" Dim. (inches) | Ship Wt. (lbs) | Full Load Eff. | Full Load Amps | Notes |
|-------|------|-------------|-------|----------------|---------|-----------------|------|-------------------|----------------|----------------|----------------|-------|
| 1     | 1800 | 208-230/460 | 143JM | DJ1P2DU        | \$570   | DS-3POV         | 1.15 | 15.61             | 30             | 85.5           | 3.2-3.1/1.6    | 03    |
| 1 1/2 | 3600 | 208-230/460 | 143JM | DJ32P1DU       | \$609   | DS-3POV         | 1.15 | 15.61             | 30             | 85.5           | 4.2-3.8/1.9    | 03    |
|       | 1800 | 208-230/460 | 145JM | DJ32P2DU       | \$581   | DS-3POV         | 1.15 | 15.61             | 35             | 86.5           | 4.4-4.2/2.1    | 03    |
| 2     | 1800 | 208-230/460 | 145JM | DJ2P2DU        | \$642   | DS-3POV         | 1.15 | 15.61             | 35             | 86.5           | 5.9-5.6/2.8    | 03    |
| 7 1/2 | 1800 | 208-230/460 | 213JM | DJ7P2DU        | \$1,188 | DS-3POV         | 1.15 | 18.63             | 90             | 91.0           | 20.2-18.5/9.3  | 03    |
| 10    | 3600 | 208-230/460 | 213JM | DJ10P1DU       | \$1,420 | DS-3POV         | 1.15 | 18.63             | 90             | 90.2           | 27.1-24.3/12.2 | 03    |
|       | 1800 | 208-230/460 | 215JM | DJ10P2DU       | \$1,400 | DS-3POV         | 1.15 | 18.75             | 105            | 91.7           | 26.3-23.8/11.9 | 03    |
| 15    | 3600 | 208-230/460 | 215JM | DJ15P1DU       | \$1,809 | DS-3POV         | 1.15 | 18.75             | 105            | 90.2           | 40-36/18       | 03    |

Note 03 60/50 Hz rated with no derate on HP; 230/460 volt 60 Hz ratings operate on 190/380 volt 50 Hz, 460V 60 Hz ratings operate on 380V 50 Hz; Full 60 & 50 Hz data on Nameplate

# Special Application Close Coupled Pump Three Phase Open Dripproof (ODP) NEMA Premium Efficient



DE1

FD4

## JP Shaft - Footed

| HP    | RPM  | Voltage     | Frame | Catalog Number | List    | Discount Symbol | SF   | "C" Dim. (inches) | Ship Wt. (lbs) | Full Load Eff. | Full Load Amps | Notes |
|-------|------|-------------|-------|----------------|---------|-----------------|------|-------------------|----------------|----------------|----------------|-------|
| 1     | 1800 | 208-230/460 | 143JP | DJ1P2DP        | \$487   | DS-3POP         | 1.15 | 18.44             | 30             | 85.5           | 3.2-3.1/1.6    | 03    |
| 1 1/2 | 1800 | 208-230/460 | 145JP | DJ32P2DP       | \$513   | DS-3POP         | 1.15 | 18.44             | 35             | 86.5           | 4.4-4.2/2.1    | 03    |
| 2     | 1800 | 208-230/460 | 145JP | DJ2P2DP        | \$563   | DS-3POP         | 1.15 | 18.44             | 35             | 86.5           | 5.9-5.6/2.8    | 03    |
| 3     | 1800 | 208-230/460 | 182JP | DJ3P2DP        | \$596   | DS-3POP         | 1.15 | 19.10             | 50             | 89.5           | 8.3-7.7/3.8    | 03    |
| 5     | 1800 | 208-230/460 | 184JP | DJ5P2DP        | \$645   | DS-3POP         | 1.15 | 19.10             | 60             | 89.5           | 13.7-12.4/6.2  | 03    |
| 7 1/2 | 1800 | 208-230/460 | 213JP | DJ7P2DP        | \$943   | DS-3POP         | 1.15 | 21.63             | 90             | 91.0           | 20.2-18.5/9.3  | 03    |
|       | 1200 | 208-230/460 | 254JP | DJ7P3DP        | \$1,565 | DS-3POP         | 1.15 | 27.4              | 150            | 91.0           | 20.5-18.9/9.5  | 03    |
| 10    | 3600 | 208-230/460 | 213JP | DJ10P1DP       | \$1,132 | DS-3POP         | 1.15 | 21.63             | 90             | 90.2           | 27.1-24.3/12.2 | 03    |
|       | 1800 | 208-230/460 | 215JP | DJ10P2DP       | \$1,147 | DS-3POP         | 1.15 | 23.13             | 105            | 91.7           | 26.3-23.8/11.9 | 03    |
|       | 1200 | 208-230/460 | 256JP | DJ10P3DP       | \$2,036 | DS-3POP         | 1.15 | 28.1              | 160            | 91.7           | 27.6-25.9/13   |       |
| 15    | 3600 | 200         | 215JP | DJ15P1HP       | \$1,555 | DS-3POP         | 1.15 | 23.1              | 105            | 90.2           | 41             |       |
|       | 3600 | 208-230/460 | 215JP | DJ15P1DP       | \$1,555 | DS-3POP         | 1.15 | 23.1              | 105            | 90.2           | 40-36/18       |       |
|       | 1800 | 200         | 254JP | DJ15P2HP       | \$1,569 | DS-3POP         | 1.15 | 27.4              | 150            | 93.0           | 42             |       |
|       | 1800 | 208-230/460 | 254JP | DJ15P2DP       | \$1,569 | DS-3POP         | 1.15 | 27.4              | 150            | 93.0           | 40-37/18.5     |       |
| 20    | 3600 | 200         | 254JP | DJ20P1HP       | \$1,882 | DS-3POP         | 1.15 | 27.44             | 150            | 91.0           | 54.0           |       |
|       | 3600 | 208-230/460 | 254JP | DJ20P1DP       | \$1,882 | DS-3POP         | 1.15 | 27.4              | 150            | 91.7           | 52-47/23.4     |       |
|       | 1800 | 200         | 256JP | DJ20P2HP       | \$2,012 | DS-3POP         | 1.15 | 28.1              | 160            | 93.0           | 56             |       |
|       | 1800 | 208-230/460 | 256JP | DJ20P2DP       | \$2,012 | DS-3POP         | 1.15 | 28.1              | 160            | 93.0           | 53-48/24.2     |       |
| 25    | 3600 | 200         | 256JP | DJ25P1HP       | \$2,461 | DS-3POP         | 1.15 | 28.1              | 160            | 92.4           | 67.0           |       |
|       | 3600 | 208-230/460 | 256JP | DJ25P1DP       | \$2,461 | DS-3POP         | 1.15 | 28.1              | 160            | 91.7           | 65-57/28.7     | 03    |
|       | 1800 | 200         | 284JP | DJ25P2HP       | \$2,435 | DS-3POP         | 1.15 | 28.6              | 225            | 93.6           | 67             |       |
|       | 1800 | 208-230/460 | 284JP | DJ25P2DP       | \$2,435 | DS-3POP         | 1.15 | 28.6              | 225            | 93.6           | 64-58/29.2     | 06    |
|       | 1800 | 575         | 284JP | DJ25P2GP       | \$2,435 | DS-3POP         | 1.15 | 28.63             | 225            | 93.6           | 23.1           |       |
| 30    | 3600 | 208-230/460 | 284JP | DJ30P1DP       | \$2,901 | DS-3POP         | 1.15 | 28.63             | 225            | 92.4           | 79-68/34       | 03    |
|       | 1800 | 208-230/460 | 286JP | DJ30P2DP       | \$2,892 | DS-3POP         | 1.15 | 28.63             | 250            | 94.1           | 77-69/34       | 03    |
| 40    | 3600 | 208-230/460 | 286JP | DJ40P1DP       | \$3,171 | DS-3POP         | 1.15 | 28.63             | 250            | 93.0           | 104-90/45      | 03    |
|       | 3600 | 575         | 286JP | DJ40P1GP       | \$3,171 | DS-3POP         | 1.15 | 28.63             | 250            | 93.0           | 36             |       |
|       | 1800 | 208-230/460 | 324JP | DJ40P2DP       | \$3,178 | DS-3POP         | 1.15 | 30.38             | 454            | 94.1           | 102-91/46      | 03    |
| 50    | 3600 | 208-230/460 | 324JP | DJ50P1DP       | \$3,567 | DS-3POP         | 1.15 | 30.38             | 454            | 93.0           | 130-117/59     | 03    |
|       | 1800 | 208-230/460 | 326JP | DJ50P2DP       | \$3,725 | DS-3POP         | 1.15 | 30.38             | 454            | 94.5           | 126-113/56     | 03    |
| 60    | 3600 | 208-230/460 | 326JP | DJ60P1DP       | \$4,915 | DS-3POP         | 1.15 | 30.38             | 460            | 93.6           | 152-134/67     | 03    |

## Westcoat Shaft - Footed

| HP    | RPM  | Voltage     | Frame  | Catalog Number | List    | Discount Symbol | SF   | "C" Dim. (inches) | Ship Wt. (lbs) | Full Load Eff. | Full Load Amps | Notes |
|-------|------|-------------|--------|----------------|---------|-----------------|------|-------------------|----------------|----------------|----------------|-------|
| 7 1/2 | 1800 | 208-230/460 | 213TCZ | DJ7P2DJ        | \$943   | DS-3POP         | 1.15 | 20.81             | 90             | 91.0           | 20.2-18.5/9.3  | 03    |
| 10    | 3600 | 208-230/460 | 213TCZ | DJ10P1DJ       | \$1,132 | DS-3POP         | 1.15 | 20.81             | 90             | 90.2           | 27.1-24.3/12.2 | 03    |
|       | 1800 | 208-230/460 | 215TCZ | DJ10P2DJ       | \$1,147 | DS-3POP         | 1.15 | 22.31             | 105            | 91.7           | 26.3-23.8/11.9 | 03    |
| 15    | 3600 | 208-230/460 | 215TCZ | DJ15P1DJ       | \$1,555 | DS-3POP         | 1.15 | 22.31             | 105            | 90.2           | 40-36/18       | 03    |

Note 03 60/50 Hz rated with no derate on HP; 230/460 volt 60 Hz ratings operate on 190/380 volt 50 Hz, 460V 60 Hz ratings operate on 380V 50 Hz; Full 60 & 50 Hz data on Nameplate

# Special Application Close Coupled Pump Single Phase, Totally Enclosed Fan Cooled (TEFC)



UTM4,  
UTM1

## APPLICATIONS:

For the specific requirements of centrifugal pumps where the pump impeller is mounted directly on the motor shaft.  
Used where dirt and moisture are minimal.

## FEATURES:

- Class F Insulation
- Extruded Aluminum Frame
- Oversized Ball Bearings w/Locked Shaft End Construction
- Reversible Rotation
- F1 Assembly Position
- Aluminum End Shields with Steel Bearing Inserts
- Shaft Slinger On Pulley End For IP54 Protection
- Removable Base
- Lifting Provisions
- "JM" Shaft For Mechanical Seal, "JP" Shaft For Packing Seal

## JM Shaft - Footed

| HP    | RPM  | Voltage | Frame | Catalog Number | List    | Discount Symbol | SF   | "C" Dim. (inches) | Ship Wt. (lbs.) | Full Load Amps | Notes |
|-------|------|---------|-------|----------------|---------|-----------------|------|-------------------|-----------------|----------------|-------|
| 3     | 3600 | 115/230 | 184JM | UJ3C1P18M      | \$1,042 | DS-3PT          | 1.15 | 20.3              | 82              | 32.0/16.0      | 18    |
|       | 1800 | 115/230 | 184JM | UJ3C2P18M      | \$872   | DS-3PT          | 1.15 | 20.3              | 80              | 30.0/15.0      | 18    |
|       | 1800 | 115/230 | 184JM | UJ3C2P18M      | \$872   | DS-3PT          | 1.15 | 20.3              | 80              | 30.0/15.0      | 18    |
| 5     | 3600 | 230     | 184JM | UJ5C1K18M      | \$1,259 | DS-3PT          | 1.15 | 20.3              | 80              | 19.6           | 18    |
|       | 1800 | 230     | 215JM | UJ5C2K21M      | \$1,181 | DS-3PT          | 1.15 | 22.3              | 90              | 23.0           | 18    |
| 7 1/2 | 3600 | 230     | 215JM | UJ7C1K21M      | \$1,487 | DS-3PT          | 1.15 | 22.3              | 133             | 30.3           | 18    |
|       | 1800 | 230     | 215JM | UJ7C2K21M      | \$1,282 | DS-3PT          | 1.15 | 22.3              | 210             | 33.5           | 18    |
| 10    | 3600 | 230     | 215JM | UJ10C1K21M     | \$1,813 | DS-3PT          | 1.15 | 22.3              | 210             | 40.0           | 18    |
|       | 1800 | 230     | 215JM | UJ10C2K21M     | \$1,694 | DS-3PT          | 1.15 | 22.3              | 210             | 43.0           | 18    |

## JP Shaft - Footed

| HP    | RPM  | Voltage | Frame | Catalog Number | List    | Discount Symbol | SF   | "C" Dim. (inches) | Ship Wt. (lbs.) | Full Load Amps | Notes |
|-------|------|---------|-------|----------------|---------|-----------------|------|-------------------|-----------------|----------------|-------|
| 3     | 1800 | 115/230 | 184JP | UJ3C2P18P      | \$872   | DS-3PT          | 1.15 | 23.3              | 80              | 30.0/15.0      | 18    |
| 5     | 3600 | 230     | 184JP | UJ5C1K18P      | \$1,259 | DS-3PT          | 1.15 | 23.3              | 80              | 19.6           | 18    |
|       | 1800 | 230     | 215JP | UJ5C2K21P      | \$1,181 | DS-3PT          | 1.15 | 26.2              | 90              | 23.0           | 18    |
| 7 1/2 | 3600 | 230     | 215JP | UJ7C1K21P      | \$1,487 | DS-3PT          | 1.15 | 26.2              | 180             | 30.3           | 18    |
|       | 1800 | 230     | 215JP | UJ7C2K21P      | \$1,282 | DS-3PT          | 1.15 | 26.2              | 120             | 33.5           | 18    |
| 10    | 3600 | 230     | 215JP | UJ10C1K21P     | \$1,813 | DS-3PT          | 1.15 | 26.2              | 145             | 40.0           | 18    |
|       | 1800 | 230     | 215JP | UJ10C2K21P     | \$1,694 | DS-3PT          | 1.15 | 26.2              | 140             | 43.0           | 18    |

Note 18 Incorporates Run Capacitor

# Special Application Close Coupled Pump Single Phase Open Dripproof (ODP)



## APPLICATIONS:

For the specific requirements of centrifugal pumps where the pump impeller is mounted directly on the motor shaft. Used where dirt and moisture are minimal.

## FEATURES:

- Class F Insulation
- Rolled Steel Frame
- Oversized Ball Bearings w/Locked Shaft End Construction
- Reversible
- F1 Assembly Position
- F1 Assembly Position
- Shaft Slinger On Pulley End
- Removable Base
- Lifting Provisions 180 Frame & Up
- "JM" Shaft For Mechanical Seal, "JP" Shaft For Packing Seal

## JM Shaft - Footed

| HP    | RPM  | Voltage     | Frame | Catalog Number | List    | Discount Symbol | SF   | "C" Dim. (inches) | Ship Wt. (lbs) | Full Load Amps | Notes |
|-------|------|-------------|-------|----------------|---------|-----------------|------|-------------------|----------------|----------------|-------|
| 1     | 1800 | 115/208-230 | 143JM | EJM104B        | \$498   | DS-3PO          | 1.15 | 13.8              | 33             | 14.2/7.2-7.1   | 25    |
| 1 1/2 | 1800 | 115/208-230 | 145JM | EJM154B        | \$589   | DS-3PO          | 1.15 | 13.8              | 34             | 16.0/8.3-8.0   | 18,25 |
| 2     | 3600 | 115/208-230 | 145JM | EJM202B        | \$656   | DS-3PO          | 1.15 | 14.6              | 35             | 19.6/10.7-9.8  | 18,25 |
|       | 1800 | 115/230     | 182JM | DJ2C2P18M      | \$711   | DS-3PO          | 1.15 | 17.5              | 70             | 23.2/11.6      | 18    |
| 3     | 3600 | 115/230     | 182JM | DJ3C1P18M      | \$786   | DS-3PO          | 1.15 | 19.6              | 81             | 16.0/32.0      | 18    |
|       | 3600 | 208-230     | 182JM | EJM302B        | \$647   | DS-3PO          | 1.15 | 15.3              | 40             | 14.0-13.2      | 18,25 |
|       | 1800 | 115/230     | 184JM | DJ3C2P18M      | \$716   | DS-3PO          | 1.15 | 17.5              | 66             | 38.0/19.0      | 18    |
| 5     | 3600 | 208-230     | 184JM | EJM502B        | \$747   | DS-3PO          | 1.15 | 16.3              | 45             | 24.0-23.7      | 18,25 |
|       | 3600 | 230         | 184JM | DJ5C1K18M      | \$945   | DS-3PO          | 1.15 | 19.6              | 82             | 19.6           | 18    |
|       | 1800 | 230         | 184JM | DJ5C2K18M      | \$904   | DS-3PO          | 1.15 | 19.6              | 86             | 22.0           | 18    |
|       | 1800 | 230         | 213JM | DJ5C2K21M      | \$1,087 | DS-3PO          | 1.15 | 20.5              | 105            | 22.0           | 25    |
| 7 1/2 | 3600 | 230         | 184JM | DJ7C1K18M      | \$1,135 | DS-3PO          | 1.15 | 19.6              | 83             | 31.4           | 18,25 |
|       | 3600 | 230         | 213JM | DJ7C1K21M      | \$1,364 | DS-3PO          | 1.15 | 20.5              | 141            | 30.4           | 25    |
|       | 1800 | 230         | 215JM | DJ7C2K21M      | \$1,161 | DS-3PO          | 1.15 | 22.0              | 110            | 35.6           | 25    |
| 10    | 3600 | 230         | 215JM | DJ10C1K21M     | \$1,601 | DS-3PO          | 1.15 | 22.0              | 173            | 40.0           | 25    |
|       | 1800 | 230         | 215JM | DJ10C2K21M     | \$1,476 | DS-3PO          | 1.15 | 22.0              | 115            | 42.2           | 25    |

## JP Shaft - Footed

| HP    | RPM  | Voltage | Frame | Catalog Number | List    | Discount Symbol | SF   | "C" Dim. (inches) | Ship Wt. (lbs) | Full Load Amps | Notes |
|-------|------|---------|-------|----------------|---------|-----------------|------|-------------------|----------------|----------------|-------|
| 3     | 3600 | 115/230 | 182JP | DJ3C1P18P      | \$786   | DS-3PO          | 1.15 | 22.7              | 81             | 16.0/32.0      | 18    |
|       | 1800 | 115/230 | 184JP | DJ3C2P18P      | \$716   | DS-3PO          | 1.15 | 20.6              | 66             | 38.0/19.0      |       |
| 5     | 3600 | 230     | 184JP | DJ5C1K18P      | \$945   | DS-3PO          | 1.15 | 22.7              | 82             | 19.6           | 18    |
|       | 1800 | 230     | 184JP | DJ5C2K18P      | \$904   | DS-3PO          | 1.15 | 22.7              | 86             | 22.0           | 18    |
| 7 1/2 | 3600 | 230     | 213JP | DJ7C1K21P      | \$1,364 | DS-3PO          | 1.15 | 24.5              | 141            | 30.4           | 25    |
|       | 1800 | 230     | 215JP | DJ7C2K21P      | \$1,161 | DS-3PO          | 1.15 | 26.0              | 110            | 35.6           | 25    |
| 10    | 3600 | 230     | 215JP | DJ10C1K21P     | \$1,601 | DS-3PO          | 1.15 | 26.0              | 173            | 40.0           | 25    |
|       | 1800 | 230     | 215JP | DJ10C2K21P     | \$1,476 | DS-3PO          | 1.15 | 26.0              | 115            | 42.2           | 25    |

Note 18 Incorporates Run Capacitor

Note 25 Non-Protected

## Replacement Motor Cross Reference

### Square Flange - Standard Efficient - Total Horsepower Rated

| 5.5 Diameter Catalog Number | 56 Catalog Number | THP  | Voltage | Regal Beloit (Formerly A.O. Smith) | Regal Beloit (Formerly A.O. Smith) | Regal Beloit (Formerly A.O. Smith) | WEG (Formerly Bluffton) |
|-----------------------------|-------------------|------|---------|------------------------------------|------------------------------------|------------------------------------|-------------------------|
| ASQ065                      | -                 | 0.65 | 230/115 | HSQ065                             | SQ1032 / USQ1052                   | B856                               | -                       |
| ASQ095                      | ASB846            | 0.95 | 230/115 | HSQ095                             | SQ1052 / USQ1072                   | B846 / B852                        | 14796 / 54002           |
| ASQ125                      | ASB847            | 1.25 | 230/115 | HSQ125                             | SQ1072 / USQ1102                   | B847 / B853                        | 15815 / 54003           |
| ASQ165                      | ASB848            | 1.65 | 230/115 | HSQ165                             | SQ1102 / USQ1152                   | B848 / B854                        | 12504 / 54004           |
| ASQ225 / ASQ225H            | ASB858            | 2.25 | 230/115 | HSQ225                             | SQ1152 / USQ1202                   | B858 / B859                        | 14728 / 18254           |
| ASQ260                      | ASB748            | 2.60 | 230     | HSQ260                             | SQ1202 / USQ1252                   | B748 / B840                        | 10855 / 13280           |
| -                           | ASB844            | 3.45 | 208-230 | -                                  | SQ1302V1                           | B844                               | 16362                   |
| -                           | ASB850            | 5.00 | 208-230 | -                                  | -                                  | B1000                              | -                       |

### Square Flange - High Efficiency - Total Horsepower Rated

| 5.5 Diameter Catalog Number | 56 Catalog Number | THP  | Voltage | Regal Beloit (Formerly A.O. Smith) | Regal Beloit (Formerly A.O. Smith) | Regal Beloit (Formerly A.O. Smith) | WEG (Formerly Bluffton) |
|-----------------------------|-------------------|------|---------|------------------------------------|------------------------------------|------------------------------------|-------------------------|
| AQC095                      | ASB845            | 0.95 | 230/115 | -                                  | QC1052 / UQC1072                   | B845                               | 11357                   |
| AQC125                      | ASB661            | 1.25 | 230/115 | -                                  | QC1072 / UQC1102                   | B2661                              | 16358                   |
| AQC165                      | ASB841            | 1.65 | 230/115 | -                                  | QC1102 / UQC1152                   | B2841                              | 16359                   |

### Square Flange - Premium Energy Efficient - Total Horsepower Rated

| 5.5 Diameter Catalog Number | 56 Catalog Number | THP  | Voltage     | Regal Beloit (Formerly A.O. Smith) | Regal Beloit (Formerly A.O. Smith) | Regal Beloit (Formerly A.O. Smith) | WEG (Formerly Bluffton) |
|-----------------------------|-------------------|------|-------------|------------------------------------|------------------------------------|------------------------------------|-------------------------|
| -                           | ASB845            | 0.95 | 208-230/115 | -                                  | QC1052 / UQC1072                   | B845                               | 11357                   |
| -                           | ASB661            | 1.25 | 208-230/115 | -                                  | QC1072 / UQC1102                   | B2661                              | 16358                   |
| -                           | ASB841            | 1.65 | 208-230/115 | -                                  | QC1102 / UQC1152                   | B2841                              | 16359                   |
| -                           | ASB842            | 2.25 | 208-230/115 | -                                  | SQ1152                             | B2842                              | 16360                   |
| -                           | ASB843            | 2.60 | 208-230     | -                                  | SQ1202                             | B2843                              | 16361                   |
| -                           | ASB844            | 3.45 | 208-230     | -                                  | SQ1302                             | B2844                              | 16362                   |
| -                           | ASB850            | 5.00 | 208-230     | -                                  | -                                  | B1000                              | -                       |

### Square Flange - Two Speed - Total Horsepower Rated - Motor Only - Title 20 Compliant

| 5.5 Diameter Catalog Number | 56 Catalog Number | THP       | Voltage | Regal Beloit (Formerly A.O. Smith) | Regal Beloit (Formerly A.O. Smith) | Regal Beloit (Formerly A.O. Smith) | WEG (Formerly Bluffton) |
|-----------------------------|-------------------|-----------|---------|------------------------------------|------------------------------------|------------------------------------|-------------------------|
| -                           | EB981             | 1.25/0.20 | 115     | -                                  | SQ1072R                            | B981                               | -                       |
| -                           | ASB2980           | 1.25/0.20 | 230     | -                                  | SQS1072R                           | B2980                              | -                       |
| -                           | ASB2982           | 1.65/0.26 | 230     | -                                  | SQS1102R                           | B2982                              | -                       |
| -                           | ASB2983           | 2.25/0.38 | 230     | -                                  | SQS1152R                           | B2983                              | -                       |
| -                           | ASB2984           | 2.60/0.43 | 230     | -                                  | SQS1202R                           | B2984                              | -                       |

### Square Flange - Two Speed with Integrated Timer - Total Horsepower Rated - Title 20 Compliant

| 5.5 Diameter Catalog Number | 56 Catalog Number | THP       | Voltage | Regal Beloit (Formerly A.O. Smith) | Regal Beloit (Formerly A.O. Smith) | Regal Beloit (Formerly A.O. Smith) | WEG (Formerly Bluffton) |
|-----------------------------|-------------------|-----------|---------|------------------------------------|------------------------------------|------------------------------------|-------------------------|
| -                           | ASB2980T          | 1.25/0.20 | 230     | -                                  | -                                  | B2980T                             | -                       |
| -                           | ASB2982T          | 1.65/0.26 | 230     | -                                  | -                                  | B2982T                             | -                       |
| -                           | ASB2983T          | 2.25/0.38 | 230     | -                                  | -                                  | B2983T                             | -                       |
| -                           | ASB2984T          | 2.60/0.43 | 230     | -                                  | -                                  | B2984T                             | -                       |

### Square Flange - Variable Speed with Integrated Timer - Title 20 Compliant

| 5.5 Diameter Catalog Number | 56 Catalog Number | THP            | Voltage | Regal Beloit (Formerly A.O. Smith) | Regal Beloit (Formerly A.O. Smith) | Regal Beloit (Formerly A.O. Smith) | WEG (Formerly Bluffton) |
|-----------------------------|-------------------|----------------|---------|------------------------------------|------------------------------------|------------------------------------|-------------------------|
| NPTQ125                     | -                 | 1/2 thru 1.25  | 115/230 | -                                  | -                                  | -                                  | -                       |
| NPTQ165                     | -                 | 1.25 thru 1.65 | 115/230 | -                                  | -                                  | ECM16SQU                           | -                       |
| NPTQ225                     | -                 | 1.65 thru 2.25 | 230     | -                                  | -                                  | ECM27SQU                           | -                       |
| NPTQ270                     | -                 | 2.25 thru 2.70 | 230     | -                                  | -                                  | ECM27SQU                           | -                       |
| -                           | AVSS15            | 1/2 thru 2.4   | 230     | -                                  | -                                  | ECM27SQU                           | -                       |
| -                           | AVSS3             | 1/2 thru 3.45  | 230     | -                                  | -                                  | -                                  | -                       |

## Replacement Motor Cross Reference

### Square Flange - Tristar Replacement - Full Rated

| 5.5 Diameter Catalog Number | 56 Catalog Number | HP  | SF   | Voltage     | Regal Beloit<br>(Formerly A.O. Smith) | Regal Beloit<br>(Formerly A.O. Smith) | WEG<br>(Formerly Bluffton) |
|-----------------------------|-------------------|-----|------|-------------|---------------------------------------|---------------------------------------|----------------------------|
| -                           | ET3205            | 1/2 | 1.98 | 208-230/115 | HSQ1052                               | -                                     | -                          |
| -                           | ET3207            | 3/4 | 1.85 | 208-230/115 | HSQ1072                               | -                                     | -                          |
| -                           | ET3210            | 1   | 1.85 | 208-230/115 | HSQ1102                               | -                                     | -                          |
| -                           | ET3215            | 1.5 | 1.60 | 208-230/115 | HSQ1152                               | -                                     | -                          |
| -                           | ET3220            | 2   | 1.35 | 208-230     | HSQ1202                               | -                                     | -                          |
| -                           | ET3230            | 3   | 1.20 | 208-230     | -                                     | -                                     | -                          |

### Square Flange - Tristar Replacement - Up Rated

| 5.5 Diameter Catalog Number | 56 Catalog Number | HP  | SF   | Voltage | Regal Beloit<br>(Formerly A.O. Smith) | Regal Beloit<br>(Formerly A.O. Smith) | WEG<br>(Formerly Bluffton) |
|-----------------------------|-------------------|-----|------|---------|---------------------------------------|---------------------------------------|----------------------------|
| -                           | ASB846            | 3/4 | 1.25 | 230/115 | -                                     | B846 / B852                           | -                          |
| -                           | ASB847            | 1   | 1.25 | 230/115 | -                                     | B847 / B853                           | -                          |
| -                           | ASB848            | 1.5 | 1.10 | 230/115 | -                                     | B848 / B854                           | -                          |
| -                           | ASB858            | 2   | 1.10 | 230/115 | -                                     | B858 / B859                           | -                          |
| -                           | ASB748            | 2.5 | 1.04 | 230     | -                                     | B748 / B840                           | -                          |
| -                           | ASB844            | 3   | 1.15 | 208-230 | -                                     | B2844                                 | -                          |

### Square Flange - Three Phase

| 5.5 Diameter Catalog Number | 56 Catalog Number | HP  | SF   | Voltage     | Regal Beloit<br>(Formerly A.O. Smith) | Regal Beloit<br>(Formerly A.O. Smith) | WEG<br>(Formerly Bluffton) |
|-----------------------------|-------------------|-----|------|-------------|---------------------------------------|---------------------------------------|----------------------------|
| -                           | EH491             | 1/2 | 1.90 | 208-230/460 | Q3052                                 | H491                                  | -                          |
| -                           | EH492             | 3/4 | 1.65 | 208-230/460 | Q3072                                 | H492                                  | -                          |
| -                           | EH635             | 1   | 1.65 | 208-230/460 | Q3102                                 | H635                                  | -                          |
| -                           | EH636             | 1.5 | 1.47 | 208-230/460 | Q3152                                 | H636                                  | -                          |
| -                           | EH637             | 2   | 1.30 | 208-230/460 | Q3202                                 | H637                                  | -                          |
| -                           | EH755             | 3   | 1.15 | 208-230/460 | Q3302V1                               | H755                                  | -                          |

### C-Flange - Threaded - Standard Efficient - Total Horsepower Rated

| 5.5 Diameter Catalog Number | 56 Catalog Number | THP  | Voltage | Regal Beloit<br>(Formerly A.O. Smith) | Regal Beloit<br>(Formerly A.O. Smith) | Regal Beloit<br>(Formerly A.O. Smith) | WEG<br>(Formerly Bluffton) |
|-----------------------------|-------------------|------|---------|---------------------------------------|---------------------------------------|---------------------------------------|----------------------------|
| AST095                      | ASB126            | 0.95 | 230/115 | HST080                                | ST1052 / UST1072                      | B126 / B227SE                         | 18330 / 54022              |
| AST125                      | ASB127            | 1.25 | 230/115 | HST110                                | ST1072 / UST1102                      | B127 / B228SE                         | 15443 / 54023              |
| AST165                      | ASB128            | 1.65 | 230/115 | HST150                                | ST1102 / UST1152                      | B128 / B229SE                         | 14542 / 54024              |
| AST225                      | ASB129            | 2.25 | 230/115 | HST225                                | ST1152 / UST1202                      | B129 / B230SE                         | 52011 / 12018              |
| AST275                      | ASB130            | 2.60 | 230     | HST275                                | ST1202 / UST1252                      | B130 / B231SE                         | 52012 / 12020              |
| -                           | ASB818            | 3.45 | 208-230 | -                                     | ST1302V1                              | B818                                  | -                          |
| -                           | ASB819            | 5.00 | 208-230 | -                                     | -                                     | -                                     | -                          |

### C-Flange - Threaded - High Efficiency - Total Horsepower Rated

| 5.5 Diameter Catalog Number | 56 Catalog Number | THP  | Voltage | Regal Beloit<br>(Formerly A.O. Smith) | Regal Beloit<br>(Formerly A.O. Smith) | Regal Beloit<br>(Formerly A.O. Smith) | WEG<br>(Formerly Bluffton) |
|-----------------------------|-------------------|------|---------|---------------------------------------|---------------------------------------|---------------------------------------|----------------------------|
| ACT095                      | -                 | 0.95 | 230/115 | -                                     | CT1052 / UCT1072                      | -                                     | 52008                      |
| ACT125                      | -                 | 1.25 | 230/115 | -                                     | CT1072 / UCT1102                      | -                                     | 52009                      |
| ACT165                      | ASB841            | 1.65 | 230/115 | -                                     | CT1102 / UCT1152                      | -                                     | 52010                      |

## Replacement Motor Cross Reference

### C-Flange - Keyed and Threaded - Premium Energy Efficient - Total Horsepower Rated

| 5.5 Diameter Catalog Number | 56 Catalog Number | THP  | Voltage     | Regal Beloit<br>(Formerly A.O. Smith) | Regal Beloit<br>(Formerly A.O. Smith) | Regal Beloit<br>(Formerly A.O. Smith) | WEG<br>(Formerly Bluffton) |
|-----------------------------|-------------------|------|-------------|---------------------------------------|---------------------------------------|---------------------------------------|----------------------------|
| -                           | ASB656            | 0.95 | 208-230/115 | -                                     | CK1052                                | B656                                  | 52003                      |
| -                           | ASB657            | 0.95 | 208-230/115 | -                                     | CT1052 / UCT1072                      | B657                                  | 52008                      |
| -                           | ASB634            | 1.25 | 208-230/115 | -                                     | CK1072                                | B634                                  | 52004                      |
| -                           | ASB638            | 1.25 | 208-230/115 | -                                     | CT1072 / UCT1102                      | B638                                  | 52009                      |
| -                           | ASB653            | 1.65 | 208-230/115 | -                                     | CK1102                                | B653                                  | 52005                      |
| -                           | ASB654            | 1.65 | 208-230/115 | -                                     | CT1102 / UCT1152                      | B654                                  | 52010                      |
| -                           | ASB795            | 2.25 | 208-230/115 | -                                     | SK1152                                | B795                                  | 52006                      |
| -                           | ASB796            | 2.25 | 208-230/115 | -                                     | ST1152                                | B796                                  | 52011                      |
| -                           | ASB808            | 2.60 | 208-230     | -                                     | SK1202                                | B808                                  | 52077                      |
| -                           | ASB809            | 2.60 | 208-230     | -                                     | ST1202                                | B809                                  | 52012                      |
| -                           | ASB817            | 3.45 | 208-230     | -                                     | SK1302V1                              | B817                                  | 12109                      |
| -                           | ASB818            | 3.45 | 208-230     | -                                     | ST1302V1                              | B818                                  | 17458                      |
| -                           | ASB819            | 5.00 | 208-230     | -                                     | -                                     | -                                     | -                          |
| -                           | ASB116            | 5.00 | 208-230     | -                                     | -                                     | B116                                  | -                          |

### C-Flange - Two Speed - Threaded - Total Horsepower Rated - Title 20 Compliant

| 5.5 Diameter Catalog Number | 56 Catalog Number | THP       | Voltage | Regal Beloit<br>(Formerly A.O. Smith) | Regal Beloit<br>(Formerly A.O. Smith) | Regal Beloit<br>(Formerly A.O. Smith) | WEG<br>(Formerly Bluffton) |
|-----------------------------|-------------------|-----------|---------|---------------------------------------|---------------------------------------|---------------------------------------|----------------------------|
| -                           | ASB2973H          | 1.25/0.20 | 230     | -                                     | STS1072RV1                            | B2973H                                | -                          |
| -                           | ASB2975           | 1.65/0.26 | 230     | -                                     | STS1102RV1                            | B2975                                 | -                          |
| -                           | ASB2977           | 2.25/0.38 | 230     | -                                     | STS1152R                              | B2977                                 | -                          |
| -                           | ASB2979           | 2.60/0.43 | 230     | -                                     | STS1202R                              | B2979                                 | -                          |

### C-Flange - Two Speed with Integrated Timer - Threaded - Total Horsepower Rated - Title 20 Compliant

| 5.5 Diameter Catalog Number | 56 Catalog Number | THP       | Voltage | Regal Beloit<br>(Formerly A.O. Smith) | Regal Beloit<br>(Formerly A.O. Smith) | Regal Beloit<br>(Formerly A.O. Smith) | WEG<br>(Formerly Bluffton) |
|-----------------------------|-------------------|-----------|---------|---------------------------------------|---------------------------------------|---------------------------------------|----------------------------|
| -                           | ASB2973HT         | 1.25/0.20 | 230     | -                                     | -                                     | B2973HT                               | -                          |
| -                           | ASB2975T          | 1.65/0.26 | 230     | -                                     | -                                     | B2975T                                | -                          |
| -                           | ASB2977T          | 2.25/0.38 | 230     | -                                     | -                                     | B2977T                                | -                          |
| -                           | ASB2979T          | 2.60/0.43 | 230     | -                                     | -                                     | B2979T                                | -                          |

### C-Flange - Variable Speed with Integrated Timer - Threaded - Title 20 Compliant

| 5.5 Diameter Catalog Number | 56 Catalog Number | THP           | Voltage | Regal Beloit<br>(Formerly A.O. Smith) | Regal Beloit<br>(Formerly A.O. Smith) | Regal Beloit<br>(Formerly A.O. Smith) | WEG<br>(Formerly Bluffton) |
|-----------------------------|-------------------|---------------|---------|---------------------------------------|---------------------------------------|---------------------------------------|----------------------------|
| NPTT125                     | -                 | 1/2 thru 1.25 | 115/230 | -                                     | -                                     | -                                     | -                          |
| NPTT165                     | -                 | 1.25-1.65     | 115/230 | -                                     | -                                     | ECM16CU                               | -                          |
| NPTT225                     | -                 | 1.65-2.25     | 230     | -                                     | -                                     | -                                     | -                          |
| NPTT270                     | -                 | 2.25-2.70     | 230     | -                                     | -                                     | ECM27CU                               | -                          |
| -                           | AVSJ15            | 1/2 thru 2.4  | 230     | -                                     | -                                     | ECM27CU                               | -                          |
| -                           | AVSJ3             | 1/2 thru 3.45 | 230     | -                                     | -                                     | -                                     | -                          |

### C-Flange - Three Phase - Threaded Shaft - Full Rated

| 5.5 Diameter Catalog Number | 56 Catalog Number | HP  | SF   | Voltage     | Regal Beloit<br>(Formerly A.O. Smith) | Regal Beloit<br>(Formerly A.O. Smith) | WEG<br>(Formerly Bluffton) |
|-----------------------------|-------------------|-----|------|-------------|---------------------------------------|---------------------------------------|----------------------------|
| -                           | EH282             | 1/2 | 1.60 | 208-230/460 | T3052                                 | H282                                  | -                          |
| -                           | EH451             | 3/4 | 1.50 | 208-230/460 | T3072                                 | H451                                  | -                          |
| -                           | EH514             | 1   | 1.40 | 208-230/460 | T3102                                 | H514                                  | -                          |
| -                           | EH617             | 1.5 | 1.30 | 208-230/460 | T3152                                 | H617                                  | -                          |
| -                           | EH705             | 2   | 1.20 | 208-230/460 | T3202                                 | H705                                  | -                          |
| -                           | EH741             | 3   | 1.15 | 208-230/460 | -                                     | H741                                  | -                          |



## Replacement Motor Cross Reference

### C-Flange - Northstar Replacement - Full and Up/MaxRated

| 5.5 Diameter Catalog Number | 56 Catalog Number | HP  | SF   | Voltage     | Regal Beloit<br>(Formerly A.O. Smith) | Regal Beloit<br>(Formerly A.O. Smith) | WEG<br>(Formerly Bluffton) |
|-----------------------------|-------------------|-----|------|-------------|---------------------------------------|---------------------------------------|----------------------------|
| -                           | ESN1072           | 3/4 | 1.85 | 208-230/115 | -                                     | SN1072                                | -                          |
| -                           | EUSN1102          | 1   | 1.40 | 208-230/115 | -                                     | USN1102                               | -                          |
| -                           | ESN1102           | 1   | 1.85 | 208-230/115 | -                                     | SN1102                                | -                          |
| -                           | EUSN1152          | 1.5 | 1.25 | 208-230/115 | -                                     | USN1152                               | -                          |
| -                           | ESN1152           | 1.5 | 1.60 | 208-230/115 | -                                     | SN1152                                | -                          |
| -                           | EUSN1202          | 2   | 1.20 | 208-230/115 | -                                     | USN1202                               | -                          |
| -                           | ESN1202           | 2   | 1.35 | 208-230     | -                                     | SN1202                                | -                          |
| -                           | EUSN1252          | 2.5 | 1.10 | 208-230     | -                                     | USN1252                               | -                          |
| -                           | EUSN1302          | 3   | 1.20 | 208-230     | -                                     | USN1302                               | -                          |
| -                           | ESN1302           | 3   | 1.60 | 208-230     | -                                     | SN1302                                | -                          |

### C-Flange - Three Phase - Keyed Shaft - Full Rated

| 5.5 Diameter Catalog Number | 56 Catalog Number | HP  | SF   | Voltage     | Regal Beloit<br>(Formerly A.O. Smith) | Regal Beloit<br>(Formerly A.O. Smith) | WEG<br>(Formerly Bluffton) |
|-----------------------------|-------------------|-----|------|-------------|---------------------------------------|---------------------------------------|----------------------------|
| -                           | EH281             | 1/2 | 1.60 | 208-230/460 | -                                     | H281                                  | -                          |
| -                           | EH450             | 3/4 | 1.50 | 208-230/460 | K3072                                 | H450                                  | -                          |
| -                           | EH513             | 1   | 1.40 | 208-230/460 | K3102                                 | H513                                  | -                          |
| -                           | EH616             | 1.5 | 1.30 | 208-230/460 | K3152                                 | H616                                  | -                          |
| -                           | EH704             | 2   | 1.20 | 208-230/460 | K3202                                 | H704                                  | -                          |
| -                           | EH740             | 3   | 1.15 | 208-230/460 | -                                     | H740                                  | -                          |

## PENTAIR EQ SERIES Pump Replacement Pool Motors

### Open Dripproof - Close Coupled Pump - Premium Efficient - Full Service Factor - Full Rated

| 5.5 Diameter Catalog Number | 56 Catalog Number | Frame  | HP  | SF   | Voltage     | Regal Beloit<br>(Formerly A.O. Smith) | WEG<br>(Formerly Bluffton) |
|-----------------------------|-------------------|--------|-----|------|-------------|---------------------------------------|----------------------------|
| -                           | EEQK500           | 182JMZ | 5   | 1.15 | 208-230/460 | CEQK500                               | -                          |
| -                           | EEQK750           | 184JMZ | 7.5 | 1.15 | 208-230/460 | CEQK750                               | -                          |
| -                           | EEQK1000          | 213JMZ | 10  | 1.15 | 208-230/460 | CEQK1000                              | -                          |
| -                           | EEQK1500          | 215JMZ | 15  | 1.15 | 208-230/460 | CEQK1500                              | -                          |
| -                           | EEQ500            | 184JMZ | 5   | 1.15 | 230         | CEQ500                                | -                          |
| -                           | EEQ750            | 213JMZ | 7.5 | 1.15 | 230         | CEQ750                                | -                          |

### Totally Enclosed Fan Cooled - Close Coupled Pump - Premium Efficient - Full Service Factor - Full Rated

| 5.5 Diameter Catalog Number | 56 Catalog Number | Frame  | HP  | SF   | Voltage     | Regal Beloit<br>(Formerly A.O. Smith) | WEG<br>(Formerly Bluffton) |
|-----------------------------|-------------------|--------|-----|------|-------------|---------------------------------------|----------------------------|
| -                           | EEQKT500          | 182JMZ | 5   | 1.15 | 208-230/460 | -                                     | -                          |
| -                           | EEQKT750          | 184JMZ | 7.5 | 1.15 | 208-230/460 | -                                     | -                          |
| -                           | EEQKT1000         | 213JMZ | 10  | 1.15 | 208-230/460 | -                                     | -                          |
| -                           | EEQKT1500         | 215JMZ | 15  | 1.15 | 208-230/460 | -                                     | -                          |

### Pool Cleaner - C-Face - Full Rated Service Factor

| 5.5 Diameter Catalog Number | 56 Catalog Number | HP  | SF   | Voltage | Regal Beloit/<br>Formerly A.O.S. Cat. No. | Regal Beloit/<br>Formerly A.O.S. Century Cat. No. | Bluffton Motor<br>Works Cat. No. | SN Tech<br>Cat. No. |
|-----------------------------|-------------------|-----|------|---------|---|---|----------------------------------|---------------------|
| -                           | ASB625            | 3/4 | 1.50 | 230/115 | PL1072                                    | B625  | -                                | -                   |
| -                           | ASB668            | 3/4 | 1.50 | 230/115 | -   | B668  | -                                | -                   |

## Replacement Motor Cross Reference

### Thru Bolt - 56 Frame - Single Speed

| 5.5 Diameter Catalog Number | 56 Catalog Number | HP | SF   | Voltage | Regal Beloit/<br>Formerly A.O.S Cat. No. | Regal Beloit/<br>Formerly A.O.S Century Cat. No. | Bluffton Motor<br>Works Cat. No. | SN Tech<br>Cat. No. |
|-----------------------------|-------------------|----|------|---------|--|--|----------------------------------|---------------------|
| -                           | ASB605            | 3  | 1.00 | 230     | -  | B237   | -                                | -                   |
| -                           | ASB606            | 4  | 1.00 | 230     | -  | B238   | -                                | -                   |

### Thru Bolt - 56 Frame - Two Speed - Soft Start

| 5.5 Diameter Catalog Number | 56 Catalog Number | HP      | SF   | Voltage | Regal Beloit/<br>Formerly A.O.S Cat. No. | Regal Beloit/<br>Formerly A.O.S Century Cat. No. | Bluffton Motor<br>Works Cat. No. | SN Tech<br>Cat. No. |
|-----------------------------|-------------------|---------|------|---------|--|--|----------------------------------|---------------------|
| -                           | ASB502            | 1.5/.18 | 1.00 | 230     | -  | B233   | -                                | -                   |
| -                           | ASB503            | 2.0/.25 | 1.00 | 230     | -  | B234   | -                                | -                   |
| -                           | ASB505            | 3.0/.38 | 1.00 | 230     | -  | B235   | -                                | -                   |
| -                           | ASB506            | 4.0/.50 | 1.00 | 230     | -  | B236   | -                                | -                   |

### Thru Bolt - 48 Frame - Single Speed

| 5.5 Diameter Catalog Number | 56 Catalog Number | HP  | SF   | Voltage | Regal Beloit/<br>Formerly A.O.S Cat. No. | Regal Beloit/<br>Formerly A.O.S Century Cat. No. | Bluffton Motor<br>Works Cat. No. | SN Tech<br>Cat. No. |
|-----------------------------|-------------------|-----|------|---------|--|--|----------------------------------|---------------------|
| AGL50FL1                    | -                 | 1/2 | 1.00 | 115     | CBT2052                                  | BN23   | 13719                            | -                   |
| AGL75FL1                    | -                 | 3/4 | 1.00 | 115     | CBT2072                                  | BN24   | 18889                            | H909                |
| AGH75FL1                    | -                 | 3/4 | 1.00 | 230     | -  | -  | -                                | -                   |
| AGL10FL1                    | -                 | 1   | 1.00 | 115     | CBT2102                                  | BN25   | 16436                            | H910                |
| AGH10FL1                    | -                 | 1   | 1.00 | 230     | -  | -  | -                                | -                   |
| AGD15FL1                    | -                 | 1.5 | 1.00 | 230/115 | TBT1152D                                 | BN25   | -                                | C1901               |
| SPH20FLC1                   | -                 | 2   | 1.00 | 230     | -  | BN40   | -                                | -                   |
| SPH20FL1                    | -                 | 2   | 1.00 | 230     | -  | 186097   | 17257                            | C1456               |
| SPH25FL1                    | -                 | 2.5 | 1.00 | 230     | -  | -  | -                                | -                   |
| SPH30FL1                    | -                 | 3   | 1.00 | 230     | -  | BN41   | -                                | -                   |

### Thru Bolt - 48 Frame - Two Speed - Soft Start

| 5.5 Diameter Catalog Number | 56 Catalog Number | HP      | SF   | Voltage | Regal Beloit/<br>Formerly A.O.S Cat. No. | Regal Beloit/<br>Formerly A.O.S Century Cat. No. | Bluffton Motor<br>Works Cat. No. | SN Tech<br>Cat. No. |
|-----------------------------|-------------------|---------|------|---------|--|--|----------------------------------|---------------------|
| AGL50FL2                    | -                 | 1/2/.06 | 1.00 | 115     | -  | -  | 18264                            | -                   |
| AGL75FL2                    | -                 | 3/4/.10 | 1.00 | 115     | CBS2072                                  | BN36   | 12562                            | C1902               |
| AGL10FL2S                   | -                 | 1.0/.12 | 1.00 | 115     | CBS2102                                  | BN37/BN38  | 15698/15700                      | C1903               |
| AGL15FL2CS                  | -                 | 1.5/.18 | 1.00 | 115     | -  | BN50   | -                                | -                   |
| SPL15FL2S                   | -                 | 1.5/.18 | 1.00 | 115     | -  | BN60   | 41000                            | -                   |
| AGH15FL2CS                  | -                 | 1.5/.18 | 1.00 | 230     | -  | BN34   | 41001                            | C1326               |
| SPH20FL2CS                  | -                 | 2.0/.25 | 1.00 | 230     | -  | BN51   | -                                | -                   |
| SPH20FL2S                   | -                 | 2.0/.25 | 1.00 | 230     | -  | BN61   | 17525                            | C1327               |
| SPH25FL2S                   | -                 | 2.5/.33 | 1.00 | 230     | -  | -  | -                                | -                   |
| SPH30FL2S                   | -                 | 3.0/.38 | 1.00 | 230     | -  | BN62   | 42005                            | -                   |

### Above Ground Pool - 48 Frame - Single Speed (Thru bolt less base)

| 5.5 Diameter Catalog Number | 56 Catalog Number | HP  | SF   | Voltage | Regal Beloit/<br>Formerly A.O.S Cat. No. | Regal Beloit/<br>Formerly A.O.S Century Cat. No. | Bluffton Motor<br>Works Cat. No. | SN Tech<br>Cat. No. |
|-----------------------------|-------------------|-----|------|---------|--|--|----------------------------------|---------------------|
| AGL75FL1NB                  | -                 | 3/4 | 1.00 | 115     | -  | -  | -                                | -                   |
| AGL10FL1NB                  | -                 | 1.0 | 1.00 | 115     | -  | -  | -                                | -                   |

## Replacement Motor Cross Reference

### Above Ground Pool - 48 Frame - Single Speed - 50Hz - CE Certified

| 5.5 Diameter Catalog Number | 56 Catalog Number | HP  | SF   | Voltage | Regal Beloit/<br>Formerly A.O.S Cat. No. | Regal Beloit/<br>Formerly A.O.S Century Cat. No. | Bluffton Motor<br>Works Cat. No. | SN Tech<br>Cat. No. |
|-----------------------------|-------------------|-----|------|---------|--|--|----------------------------------|---------------------|
| AGH75FL150                  | -                 | 3/4 | 1.00 | 220-240 | -  | BN32   | -                                |                     |
| AGH10FL150                  | -                 | 1.0 | 1.00 | 220-240 | -  | BN33   | -                                |                     |

### Above Ground Pool - EZ48 Frame - Single Speed - 60Hz - 1.5 Compartment

| 5.5 Diameter Catalog Number | 56 Catalog Number | HP  | SF   | Voltage | Regal Beloit/<br>Formerly A.O.S Cat. No. | Regal Beloit/<br>Formerly A.O.S Century Cat. No. | Bluffton Motor<br>Works Cat. No. | SN Tech<br>Cat. No. |
|-----------------------------|-------------------|-----|------|---------|--|--|----------------------------------|---------------------|
| EZBN23                      | -                 | 1/2 | 1.00 | 115     | CBT2052                                  | BN23/BN23SS                                      | -                                | -                   |
| EZBN24                      | -                 | 3/4 | 1.00 | 115     | CBT2072                                  | BN24/BN24SS                                      | -                                | -                   |
| EZBN25                      | -                 | 1.0 | 1.00 | 115     | CBT2102                                  | BN25/BN25SS                                      | -                                | -                   |
| EZBV35                      | -                 | 1.5 | 1.00 | 115     | -  | BV35/BV35SS                                      | -                                | -                   |
| EZBN35                      | -                 | 1.5 | 1.00 | 230/115 | TBT1152D                                 | BN35/BN35SS                                      | -                                | -                   |

### Above Ground Pool - EZ48 Frame - Two Speed - 60Hz - 1.5 Compartment

| 5.5 Diameter Catalog Number | 56 Catalog Number | HP      | SF   | Voltage | Regal Beloit/<br>Formerly A.O.S Cat. No. | Regal Beloit/<br>Formerly A.O.S Century Cat. No. | Bluffton Motor<br>Works Cat. No. | SN Tech<br>Cat. No. |
|-----------------------------|-------------------|---------|------|---------|--|--|----------------------------------|---------------------|
| EZBN36                      | -                 | 3/4/.10 | 1.00 | 115     | CBS2072                                  | BN36   | -                                | -                   |
| EZBN37                      | -                 | 1.0/.12 | 1.00 | 115     | CBS2102                                  | BN37   | -                                | -                   |
| EZBN50                      | -                 | 1.5/.18 | 1.00 | 115     | TBS1152SV1                               | BN50   | -                                | -                   |

### Above Ground Pool - Hoffinger Replacement

| 5.5 Diameter Catalog Number | 56 Catalog Number | HP  | SF   | Voltage | Regal Beloit/<br>Formerly A.O.S Cat. No. | Regal Beloit/<br>Formerly A.O.S Century Cat. No. | Bluffton Motor<br>Works Cat. No. | SN Tech<br>Cat. No. |
|-----------------------------|-------------------|-----|------|---------|--|--|----------------------------------|---------------------|
| AGL10FL1H1                  | -                 | 1   | 1.00 | 115     | ODB1102V1                                | BV91   | -                                | -                   |
| AGL10FL1H2                  | -                 | 1   | 1.00 | 115     | ODB1102                                  | BV90   | -                                | H911                |
| AGL15FL1H2                  | -                 | SPL | 1.00 | 115     | -  | -  | -                                | -                   |

Member of the following:



Nidec Motor Corporation, © 2020; All Rights Reserved.  
U.S. MOTORS® is a registered trademark of Nidec Motor Corporation.  
Nidec Motor Corporation trademarks followed by the ® symbol are registered with the U.S. Patent and Trademark Office.

POOL & SPA Rev. 10/2020

**Nidec**  
NIDEC MOTOR CORPORATION

8050 W. Florissant Avenue | St. Louis, MO 63136  
Phone: 888-637-7333 | Fax: 314-553-2087  
[www.usmotors.com](http://www.usmotors.com)