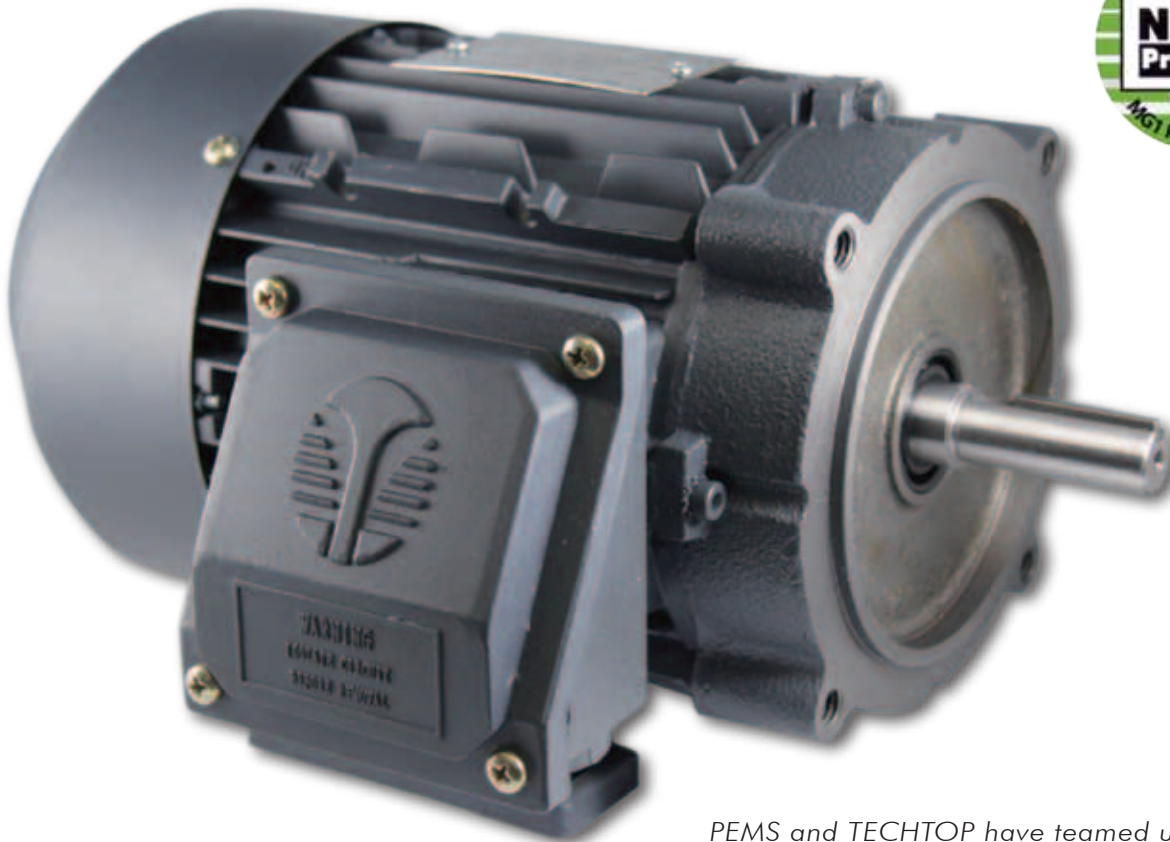




TECHTOP
TEFC ALUMINUM MOTORS

EISA Compliant, Inverter Rated, Rigid Base, 15:1 Constant Torque
11.22.11



PEMS and TECHTOP have teamed up to bring you NEMA PREMIUM T-FRAME MOTORS with ultra competitive pricing. Call 800.234.5687 or Fax to 888.234.5687

STOCKING LOCATIONS INCLUDE:

Owosso, MI St. Louis, MO Columbus, IN Chicago, IL Dallas, TX Atlanta, GA Phoenix, AZ
Sioux Falls, SD Wallingford, CT Lenexa, KS

PREMIUM FEATURES

- Removable feet
- Double lip oil seals
- F1, F2, F0 convertible (shipped F1)
- 1045 steel shaft
- 24 month warranty
- Class F insulation with "H" class stator
- Shielded bearings
- 40° ambient rating
- Tropicalization on stator winding
- UL 1004 approved
- Conduit box is 90° rotatable
- Nipple seals (between conduit box and body)
- 1.25 service factor
- Corrosion resistant hardware
- One-way sintered brass condensate drains

WWW.PEMSMOTORS.COM

PRECISION ELECTRIC MOTOR SALES • OWOSSO, MICHIGAN • P: 800.234.5687 F: 888.234.5687



TEFC ALUMINUM MOTORS

EISA Compliant, Inverter Rated, Rigid Base, 15:1 Constant Torque

11.22.11

RIGID BASE MOTORS

HP	RPM	WEIGHT (lbs.)	PEMS MODEL NO.	PRICE
1	1800	32	AL14T143T	
	1200	32	AL16T145T	
1.5	3600	30	AL1.52T143T	
	1800	36	AL1.54T145T	
2	1200	63	AL1.56T182T	
	3600	34	AL22T145T	
	1800	41	AL24T145T	
3	1200	69	AL26T184T	
	3600	58	AL32T182T	
	1800	65	AL34T182T	
5	1200	96	AL36T213T	
	3600	65	AL52T184T	
	1800	74	AL54T184T	
7.5	1200	109	AL56T215T	
	3600	110	AL7.52T213T	
	1800	120	AL7.54T213T	
10	3600	118	AL102T215T	
	1800	138	AL104T215T	

C-FACE KITS

FRAME	MODEL NO.	PRICE
143T & 145T	CFK140TT	
182T & 184T	CFK180TT	
213T & 215T	CFK210TT	

C-FACE MOTORS w/ removable rigid base

HP	RPM	WEIGHT (lbs.)	PEMS MODEL NO.	PRICE
1	1800	41	AL14T143TC	
	1200	41	AL16T145TC	
1.5	3600	39	AL1.52T143TC	
	1800	45	AL1.54T145TC	
2	1200	78	AL1.56T182TC	
	3600	44	AL22T145TC	
	1800	50	AL24T145TC	
3	1200	84	AL26T184TC	
	3600	73	AL32T182TC	
	1800	80	AL34T182TC	
5	1200	107	AL36T213TC	
	3600	80	AL52T184TC	
	1800	89	AL54T184TC	
7.5	1200	119	AL56T215TC	
	3600	121	AL7.52T213TC	
	1800	127	AL7.54T213TC	
10	3600	129	AL102T215TC	
	1800	149	AL104T215TC	